

INSTALLATION INSTRUCTIONS

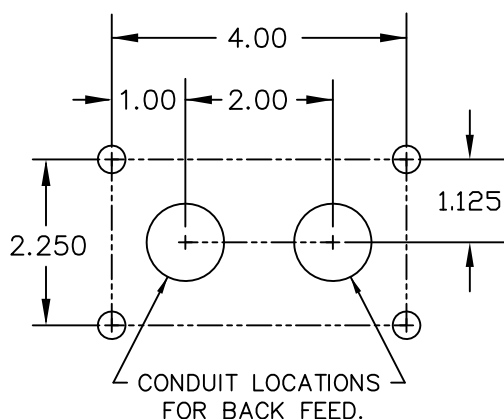
FOR WS (WALL MOUNT, SURFACE CONDUIT) OPTION

300 SERIES CYLINDERS

IMPORTANT: READ ALL INSTRUCTIONS BEFORE PERFORMING ANY WORK.
BE SURE ALL POWER IS OFF PRIOR TO INSTALLING LUMINAIRE.

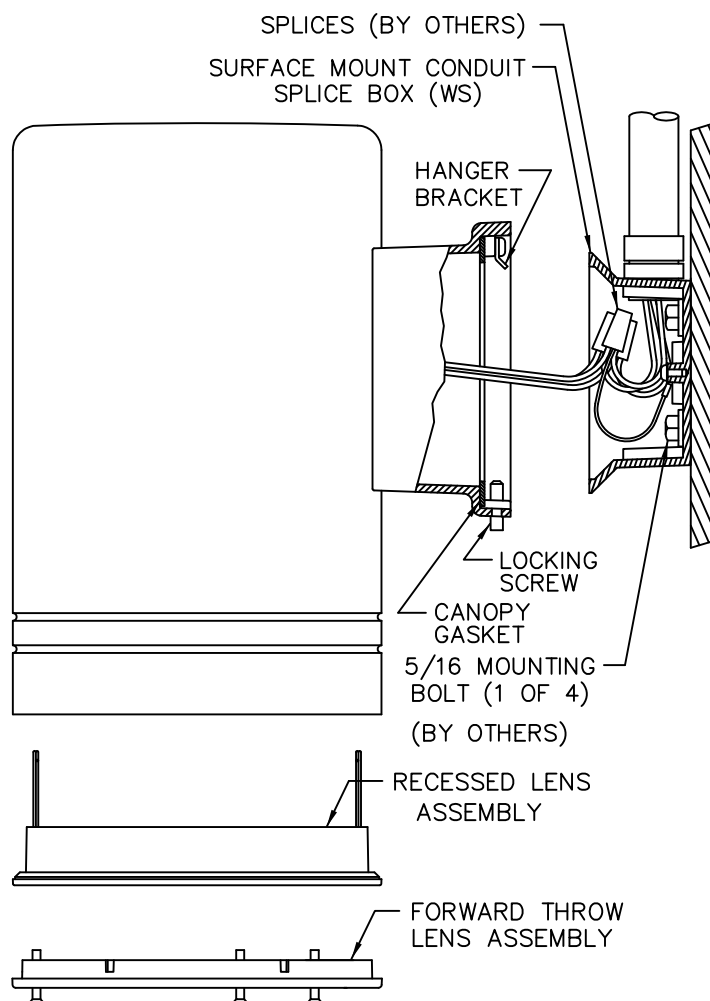
WARNING: LUMINAIRE MUST BE GROUNDED IN ACCORDANCE WITH
APPROPRIATE CODES. FAILURE TO DO SO MAY RESULT IN
SERIOUS INJURY.

NOTE:
SPLICE BOX IS SECURED TO WALL
WITH 5/16" BOLTS (BY OTHERS).
STRUCTURAL MEMBERS MUST BE
PRESENT IN WALL TO ACCEPT BOLTS.



MOUNTING BOLT PATTERN

1. DETERMINE WHICH HUB(S) IN SURFACE MOUNT SPLICE BOX ARE TO BE USED IN THIS INSTALLATION. INSTALL AND SEAL ELECTRICAL FITTING(S) IN HUB(S). INSTALL AND SEAL PLUG(S) IN UNUSED HUB(S). APPLY SEALANT TO THE FOUR UNUSED HOLES IN THE ANGLED WALLS OF THE SPLICE BOX. INSTALL CONDUIT SECTION(S) INTO FITTINGS AS REQUIRED.
2. DETERMINE MOUNTING LOCATION OF SPLICE BOX. APPLY A BEAD OF SEALANT AROUND EACH MOUNTING HOLE ON THE OUTSIDE OF THE BOX.
FOR INSTALLATIONS WHERE CONDUIT ENTERS THROUGH THE BACK OF THE SPLICE BOX, APPLY A BEAD OF SEALANT ON THE OUTSIDE OF THE BOX AROUND THE CONDUIT HOLE USED. SECURE BOX TO WALL WITH 5/16" BOLTS (BY OTHERS) MAKING SURE BOX IS LEVEL.
3. COMPLETE CONDUIT INSTALLATION AND ROUTE SUPPLY WIRES INTO SPLICE BOX.

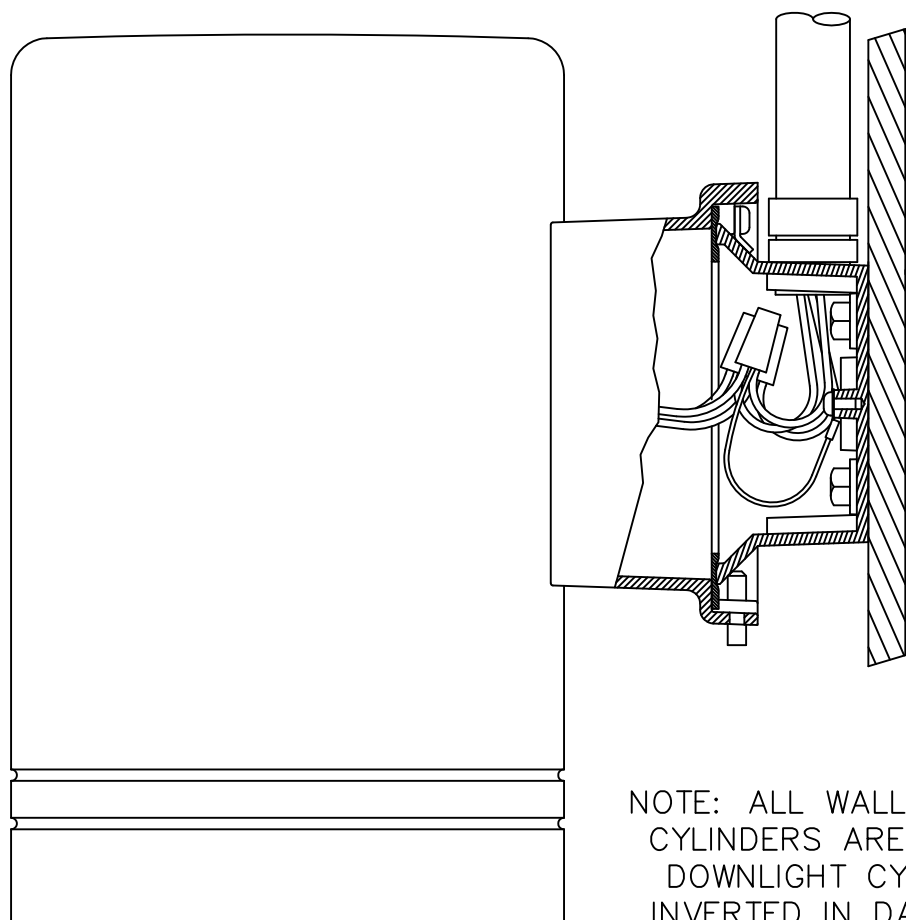


INSTALLATION INSTRUCTIONS

FOR WS (WALL MOUNT, SURFACE CONDUIT) OPTION

300 SERIES CYLINDERS

4. DISCARD MOUNTING BRACKET SUPPLIED WITH FIXTURE.
5. REMOVE BACKING FROM FOAM CANOPY GASKET. APPLY GASKET TO CANOPY AS SHOWN.
6. MAKE ELECTRICAL CONNECTIONS. FIXTURE LINE TO SUPPLY LINE, COMMON TO COMMON AND GROUND TO GROUND INCLUDING SPLICE BOX GROUND.
7. PLACE SPLICES AND EXCESS WIRE IN SPLICE BOX. CAREFULLY ENGAGE HANGER BRACKET TO SPLICE BOX BEING CAREFUL NOT TO PINCH WIRES. ALLOW FIXTURE TO REST AGAINST BOX. TIGHTEN LOCKING SCREWS.
8. IN LENSED UNITS, REMOVE LENS ASSEMBLY IF LAMP INSTALLATION IS REQUIRED. INSTALL LAMP AND REPLACE LENS ASSEMBLY. (TYPICAL LENS ASSEMBLIES ARE SHOWN FOR REFERENCE ONLY).



FIXTURE INSTALLED
ON WS OPTION

NOTE: ALL WALL MOUNTED 300 LINE CYLINDERS ARE WET LOCATION RATED. DOWNLIGHT CYLINDERS MAY BE MOUNTED INVERTED IN DAMP LOCATIONS. UPLIGHT CYLINDERS MAY BE MOUNTED INVERTED IN WET LOCATIONS EXCEPT THOSE WITH FORWARD THROW (FT/C) OPTICS.

PHILIPS

© 2016 Philips Lighting Holding B.V. All rights reserved.

Philips Lighting North America
Corporation
200 Franklin Square Drive
Somerset, NJ 08873, USA

Philips Lighting Canada Ltd.
281 Hillmount Road,
Markham ON, Canada L6C 2S3

A815679/443561004500-A
2 OF 2