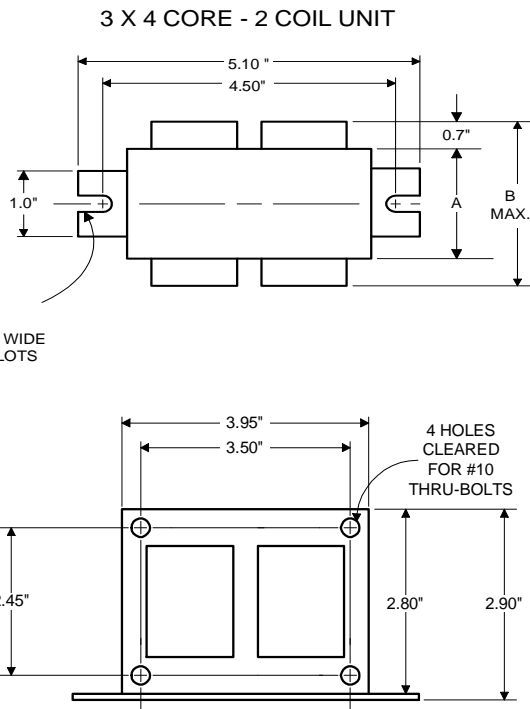


PHILIPS ADVANCE

Metal
Halide
Lamp Ballast

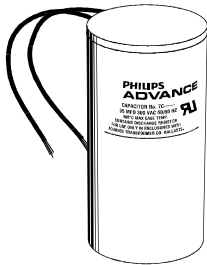
Catalog Number 71A5771
For 250W M58
60 Hz CWA
Status: Active

DIMENSIONS AND DATA



	120	208	240	277
INPUT VOLTS				
CIRCUIT TYPE	CWA			
POWER FACTOR (min)	90%			
REGULATION				
Line Volts	±10%			
Lamp Watts	±8%			
LINE CURRENT (Amps)				
Operating.....	2.60	1.50	1.30	1.10
Open Circuit.....	2.60	1.50	1.30	1.10
Starting.....	1.00	0.60	0.50	0.45
UL TEMPERATURE RATINGS				
Insulation Class	H(180°C)			
Coil Temperature Code	1029			
	C	C	D	D
MIN. AMBIENT STARTING TEMP.	-20°F or -30°C			
NOM. OPEN CIRCUIT VOLTAGE	300			
INPUT VOLTAGE AT LAMP DROPOUT.....	60	104	120	138
INPUT WATTS	294			
RECOMMENDED FUSE (Amps).....	8	5	5	3
CORE and COIL				
Dimension (A)	3.00			
Dimension (B)	4.20			
Weight (lbs.)	9			
Lead Lengths	12"			
CAPACITOR REQUIREMENT				
Microfarads	15.0			
Volts (min.)	400			
Fault Current Withstand (amps)				
60 Hz TEST PROCEDURES (Refer to Advance Test Procedure for HID Ballasts - Form 1270)				
High Potential Test (Volts)				
1 minute	2000			
2 seconds	2500			
Open Circuit Voltage Test (Volts)	270-330			
Short-Circuit Current Test (Amps)				
Secondary Current	2.00-3.00			
Input Current.....	1.20-1.80	0.70-1.00	0.60-0.90	0.50-0.75

Capacitor: 7C150P40-R



Capacitance: 15
Dia/Oval Dim: 1.75
Height: 3.75
Temp Rating: 105°C



Wiring Diagram:

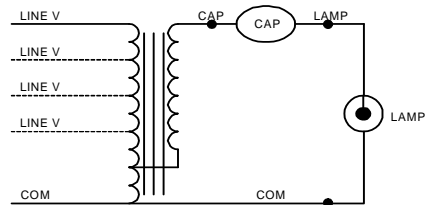


Fig. A

Ordering Information

Order Suffix	Description
001D	STANDARD IC PACK WITH DRY CAP - NO FLAG TERMINALS

Ignitor:

NA

This ballast does not require the use of an ignitor.

Data is based upon tests performed by Philips Lighting Electronic N.A. in a controlled environment and representative of relative performance. Actual performance can vary depending on operating conditions. Specifications are subject to change without notice.

Philips Lighting Electronic N.A.

10275 West Higgins Road · Rosemont, IL 60018 · Tel:800-322-2086 Fax:888-432-1882
Customer Support/ Technical Service:800-372-3331 · OEM Support: 866-915-5886

10/26/09