

READ AND UNDERSTAND THESE INSTRUCTIONS BEFORE INSTALLING FIXTURE
 This fixture is intended for installation in accordance with the National Electrical Code and local regulations. To assure full compliance with local codes and regulations, check with your local electrical inspector before installation. To prevent electric shock, turn off electricity at fuse box before proceeding.
Retain these instructions for maintenance reference.

INSTRUCTION SHEET NO.

IS:CICLV

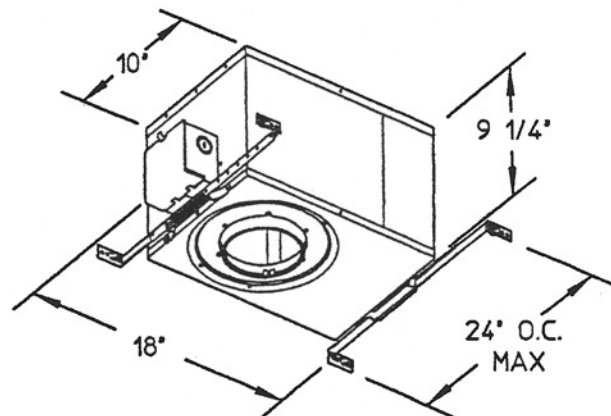
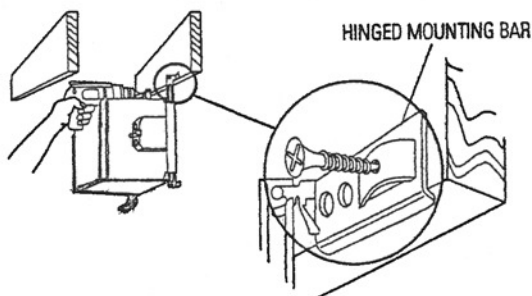
B0216

Page 1 of 2

INSTALLATION PROCEDURE FOR LOW VOLTAGE INSULATED CEILING (TYPE-IC) FRAME-IN-KITS: C4AICLV, C6AICLV

FRAME-IN

Locate fixture along joist and line up bottom edge of HINGED MOUNTING BAR with the bottom of joist and fasten in place.



FOR JOIST SPACING LESS THAN 16" ON CENTER (TO 12" ON CENTER):

- MOUNTING BAR CHANNELS can be shortened and used as nailing legs in tight spaces. Simply remove INNER BAR from holed CHANNEL, bend CHANNEL at appropriate point and use extra screw to secure it to the joist.

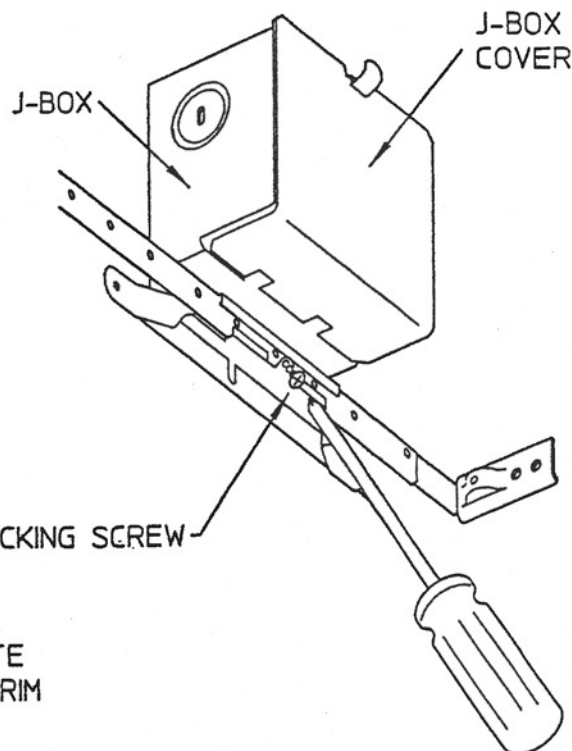


WIRE-IN

Wire to SUPPLY LEADS. WHITE FIXTURE LEAD to NEUTRAL SUPPLY LEAD. BLACK FIXTURE LEAD to HOT (120V) SUPPLY LEAD. For 277V connect RED FIXTURE LEAD to HOT SUPPLY LEAD. BARE FIXTURE WIRE to SUPPLY GROUND. Use wirenuts (local hardware item). Place all electrical connections in the J-BOX and close the J-BOX COVER.

SWING-UP

Extend MOUNTING BAR to reach opposite joist and fasten in place. Adjust fixture to desired position along MOUNTING BAR and lock in place using locking screw.



AIRSEAL® INSTALLATION (optional)

Install a bead of silicone caulking compound between the ceiling opening and edge of HOUSING. Housings are tested in accordance with ASTM E 283 (max 2 cfm @ 75 pa) and comply with WSEC & MEC when installed as instructed.

CLOSE-IN

Close in ceiling as required

INSTALLING SOCKET HARNESS

INSTALLING HOUSING TRIMS

FIXTURE TRIM ADJUSTMENT

SEE SEPARATE
 REFLECTOR TRIM
 INSTRUCTION
 SHEETS

U.S. AND FOREIGN PATENTS PENDING

LIGHTOLIER®

Philips Lighting North America Corporation
 200 Franklin Square Drive
 Somerset, NJ 08873, USA
 Phone: 855-486-2216

Philips Lighting Canada Ltd.
 281 Hillmount Road
 Markham ON, Canada L6C 2S3
 Phone: 800-668-9008

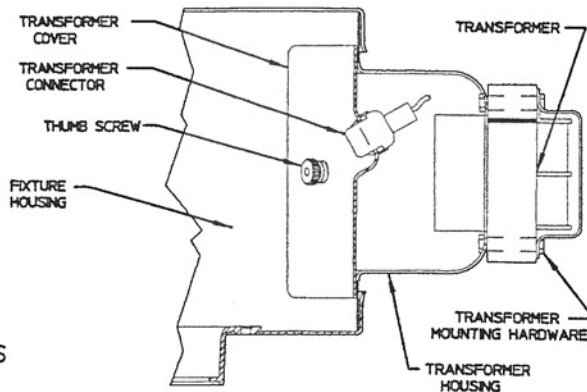
READ AND UNDERSTAND THESE INSTRUCTIONS BEFORE INSTALLING FIXTURE

This fixture is intended for installation in accordance with the National Electrical Code and local regulations. To assure full compliance with local codes and regulations, check with your local electrical inspector before installation. To prevent electric shock, turn off electricity at fuse box before proceeding. Retain these instructions for maintenance reference.

INSTALLATION PROCEDURE FOR LOW VOLTAGE INSULATED CEILING (TYPE-IC) FRAME-IN-KITS: C4AICLV, C6AICLV

TRANSFORMER REPLACEMENT

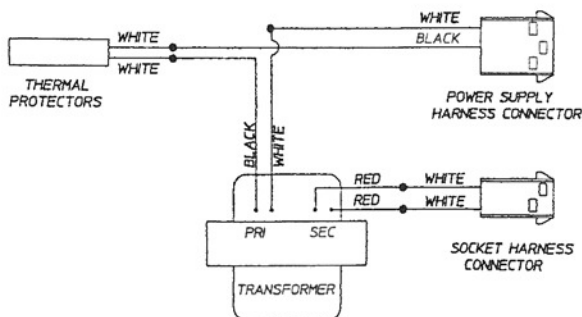
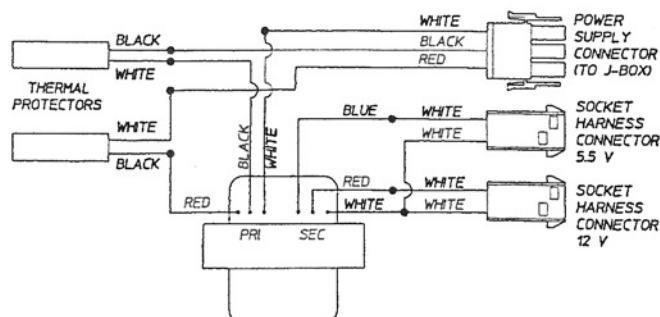
- Make sure power to fixture is off.
- Remove REFLECTOR TRIM from ceiling by twisting counter-clockwise and pulling down.
- Disconnect & remove SOCKET HARNESS from TRANSFORMER ASSEMBLY.
- Disconnect POWER SUPPLY HARNESS: For C4AICLV disconnect harness at TRANSFORMER COVER. For C6AICLV disconnect harness from junction box assembly (opposite side of fixture from TRANSFORMER ASSEMBLY).
- Remove (2) THUMB SCREWS.
- Remove TRANSFORMER COVER from THUMB SCREW studs.
- Pull TRANSFORMER ASSEMBLY and TRANSFORMER COVER into FIXTURE HOUSING and out through aperture opening.
- Disconnect TRANSFORMER wiring from THERMAL PROTECTOR/S and TRANSFORMER CONNECTORS. Refer to TRANSFORMER WIRING DIAGRAMS shown below for your particular MODEL as indicated.
- Remove TRANSFORMER MOUNTING HARDWARE and discard faulty TRANSFORMER.
- Install new TRANSFORMER in reverse order of removal.

**TRANSFORMER ASSEMBLY**

NOTE: 1 LOW VOLTAGE FIXTURES should be dimmed only with special dimmers intended specifically for that purpose. Use Lightolier Lytemode, Scenist, Crescendo VA, Neptune VA, Precision VA, Easyset VA, Sunrise VA, Radiant VA or equivalent products by others or variable autotransformers or electronic dimmers intended for use with low voltage fixtures.

2. Low voltage fixtures may produce audible sound which may be objectionable in acoustically critical areas.

(Warning: Risk of fire. Fixture contains THERMAL PROTECTORS that must be rewired as shown in DIAGRAMS below. Use only replacement TRANSFORMER obtained from LIGHTOLIER).

**TRANSFORMER WIRING DIAGRAM
MODEL C4AICLV****TRANSFORMER WIRING DIAGRAM
MODEL C6AICLV**

U.S. AND FOREIGN PATENTS PENDING

LIGHTOLIER®

Philips Lighting North America Corporation
200 Franklin Square Drive
Somerset, NJ 08873, USA
Phone: 855-486-2216

Philips Lighting Canada Ltd.
281 Hillmount Road
Markham ON, Canada L6C 2S3
Phone: 800-668-9008