

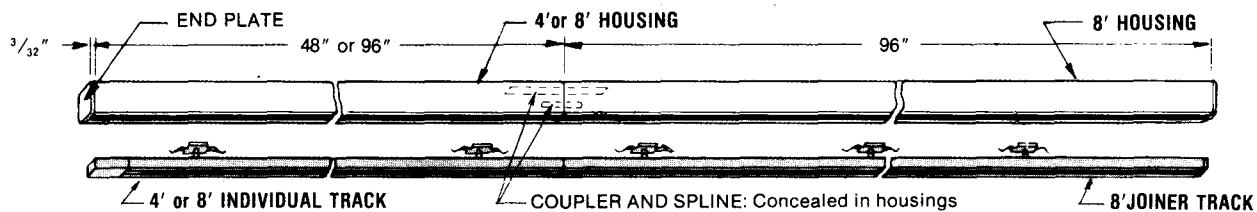
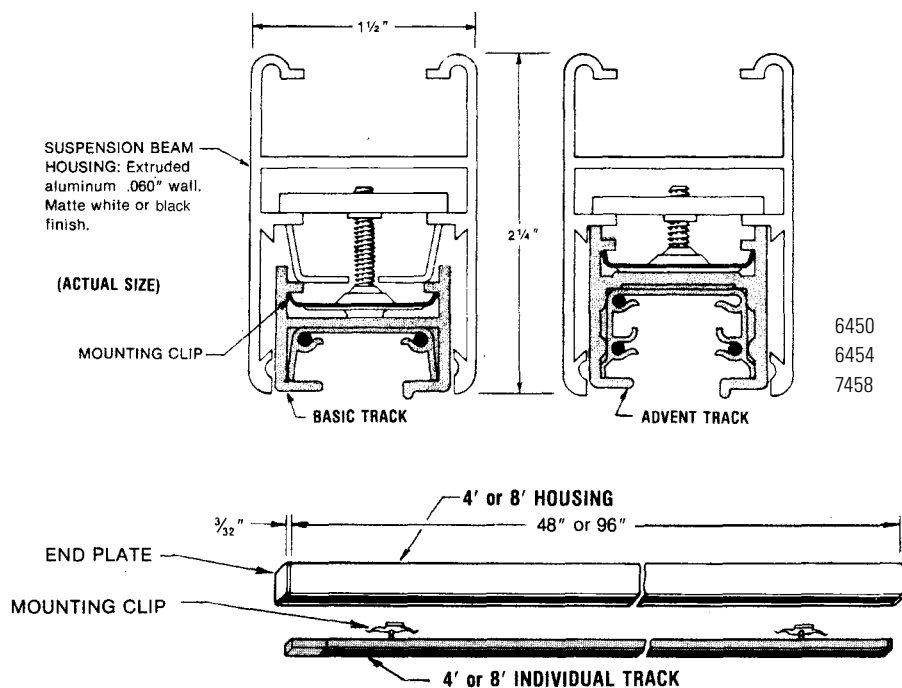
LIGHTOLIER

by @signify

Track Lighting

Suspension Beam

6450 Track Lighting System



A straight run of track is started with an Individual and continued with Joiners.

Ordering Information

4' Housing

Catalog No.

6450
6450BK

Finish

Matte White
Black

8' Housing

Catalog No.

6451
6451BK

Finish

Matte White
Black

Features

1. General Description: Suspension Beam is a system of extruded aluminum housings which enclose Basic or Advent Lytespan track (see Specification Sheets 6000 and 6101). The 4'Housing is used with a 4' Individual Track, the 8' with an 8' individual or Joiner Track. End plates, couplers, splines and mounting clips are furnished with the housings. The housings may be installed individually, in continuous runs or in a variety of patterns and may be field-cut (at right angles).

2. Mounting: Suspension Beam Housing can be suspended on cables or stems, which may be spaced up to 8' apart.

3. Finish: Matte White or Black.

Labels

U. L.; I. B.E.W

Project:

Location:

Cat.No:

Type:

Lamps:

Qty:

Notes:

6450	7469	7459	7582	7584
6454	7586	7680	7681	7683
7458	6451	6467	7468	

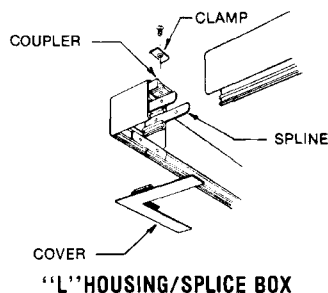
6450 Suspension Beam

Track Lighting System

INTERCEPTS:

L', Housing/Splice Box is used to form patterns with Suspension Beam Housings. They include bottom covers which snap in without tools.

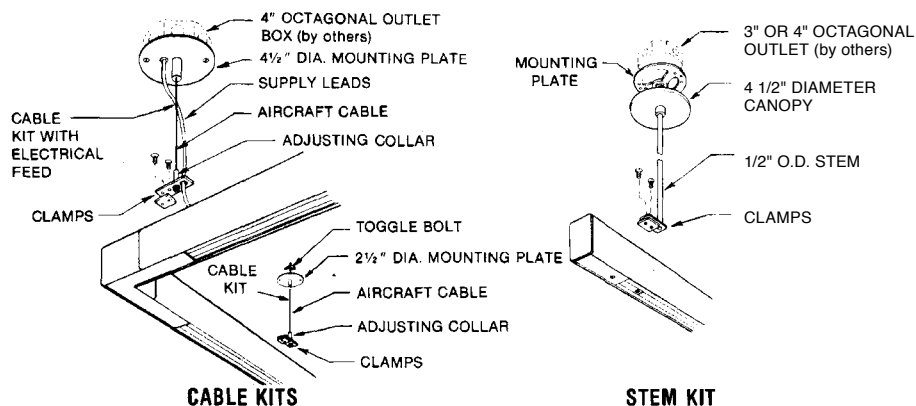
In patterns, each straight run of track is started with an Individual and continued with Joiners.



"L" HOUSING/SPLICE BOX

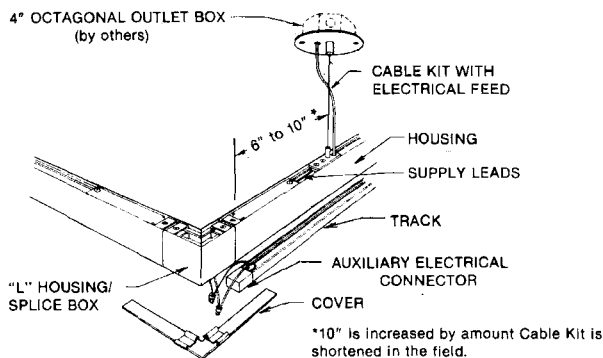
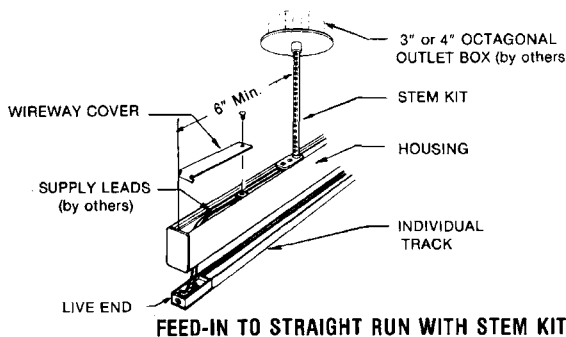
CABLE OR STEM

Stems are recommended for housings in straight runs or patterns and cables for housings in patterns only. Both attach to the housings at any point (except at top wireway covers), may be spaced up to 8' apart and may be shortened in the field. The cables have an adjusting collar to facilitate leveling. Stem length may be increased 48" with the Stem Extension Kit. A special coupler is included to strengthen the joint between housings.



POWER FEED AND POWER CONTINUITY

Power is fed into the end of a straight run of housings with a Stem Kit. Power is fed into a pattern of housings at the Housing Splice Boxes with a Stem Kit or a Cable Kit with electrical feed. Power is also continued from one track run to another through the Housing/Splice Boxes. Auxiliary Electrical Connectors, which are ordered in sets with Housing/Splice Boxes, are required for power feed or power continuity at Housing/Splice Boxes.



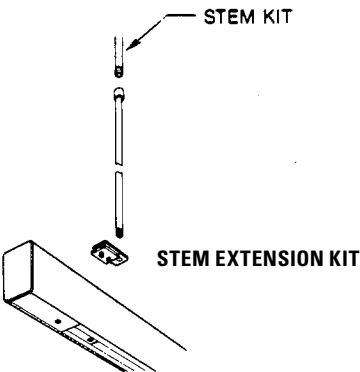
FEED-IN AT HOUSING/SPLICE BOX WITH CABLE KIT

6450 Suspension Beam Track Lighting System

Continued from page 2.

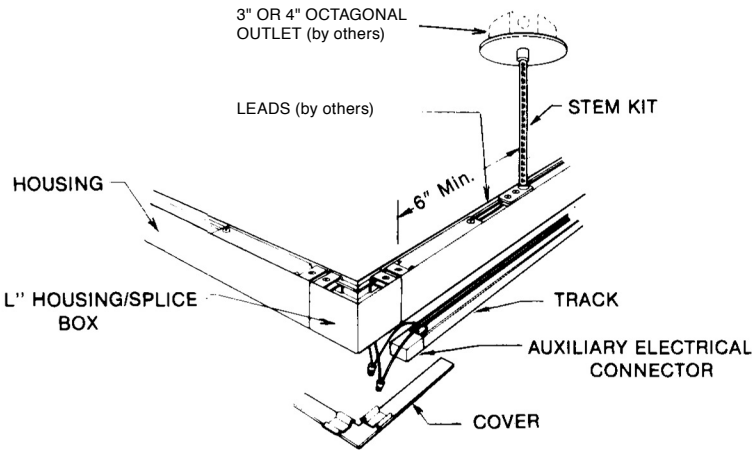
CABLE OR STEM

Stems are recommended for housings in straight runs or patterns and cables for housings in patterns only. Both attach to the housings at any point (except at top wireway covers), may be spaced up to 8' apart and may be shortened in the field. The cables have an adjusting collar to facilitate leveling. Stem length may be increased 48" with the Stem Extension Kit. A special coupler is included to strengthen the joint between housings.

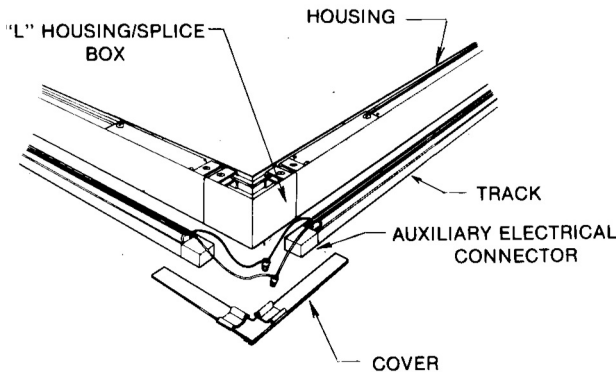


POWER FEED AND POWER CONTINUITY

Power is fed into the end of a straight run of housings with a Stem Kit. Power is fed into a pattern of housings at the Housing Splice Boxes with a Stem Kit or a Cable Kit with electrical feed. Power is also continued from one track run to another through the Housing/Splice Boxes. Auxiliary Electrical Connectors, which are ordered in sets with Housing/Splice Boxes, are required for power feed or power continuity at Housing/Splice Boxes.



FEED-IN AT HOUSING/SPLICE BOX



POWER CONTINUITY AT HOUSING/SPLICE BOX

COMPONENTS

"L" HOUSING/SPLICE BOX
6454 Matte White
6454BK Black

AUXILIARY ELECTRICAL
CONNECTORS (Set of 2 for
"L" Housing/Splice Box)
ADVENT
6467WH

BASIC
6464WH

STEM KITS	
18"	48"
7584	7586 Matte White
7683	7681 Matte Black

(may be field cut)

48" STEM EXTENSION KIT
7582 Matte White
7680 Matte Black

CABLE KITS	
Matte White Fittings	
60"	120"
7458NWH	7468NWH

Matte White Fittings and
Black Electrical Feed.
(1 or 2 circuit).
7459NWH **7469NWH**

6450 Suspension Beam

Track Lighting System

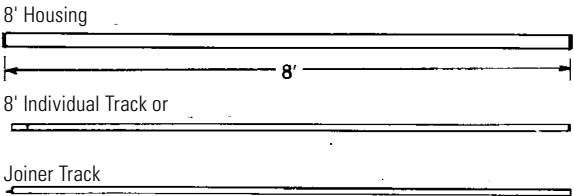
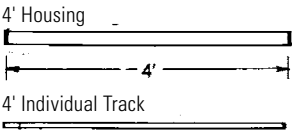
COMPONENTS

Layouts of Stems and Cabels

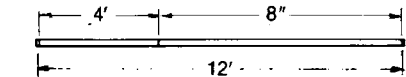
Locate cables or stems uniformly along housings not exceeding 8' spacing. In a straight run or open pattern, locate first and last supports approximately 1' from the ends.

Position stem for power feed at least 6" from the end of the housing (or housing/splice box) to which power is to be fed.

Position cable for power feed 6" to 10" from the housing/splice box to which power is to be fed. The 10" distance may be increased by the amount the cable is shortened on the job.

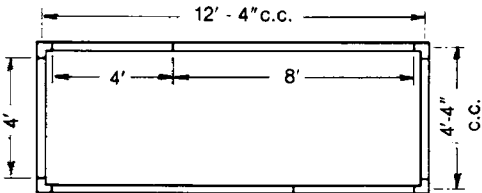


"L"-Housing Splice Box

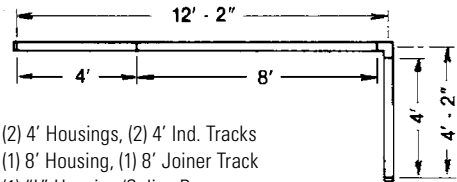


- (1) 4' Housing, (1) 4' Ind. Track
- (1) 8' Housing, (1) 8' Joiner Track

Recommended Support: Stem or Wall Mounting Kit



- (4) 4' Housings, (4) 4' Ind. Tracks
 - (2) 8' Housings, (2) 8' Joiner Tracks
 - (4) "L" Housing/Splice Boxes
 - (4) Sets of 2 Aux. Elect. Connectors
- Recommended Support: Stem or Cable



- (2) 4' Housings, (2) 4' Ind. Tracks
 - (1) 8' Housing, (1) 8' Joiner Track
 - (1) "L" Housing/Splice Box
 - (1) Set of 2 Aux. Elect. Connectors
- Recommended Support: Stem or Cable

NOTE: Dimensions shown do not include End Plates.

SUSPENSION BEAM MOUNTING	MAXIMUM LOAD*
Cables or Stems, spaced 8 Ft. apart	5 lb. Lytespots on 1 Ft. Spacing

