

Read and understand these instructions before installing luminaire.

This luminaire is intended for installation in accordance with the National Electrical Code and local regulations. To assure full compliance with local codes and regulations, check with your local electrical inspector before installation. To prevent electrical shock, turn off electricity at fuse box before proceeding.

Retain these instructions for maintenance reference.

PowerTrip™ IN-LINE FEED CONNECTOR 9033 FOR USE WITH 9100 SERIES TRACK OR 6033 FOR USE WITH 6000 SERIES TRACK ONLY. PowerTrip breaker will limit the amount of wattage on a circuit and can be used as a standard ON/OFF switch.

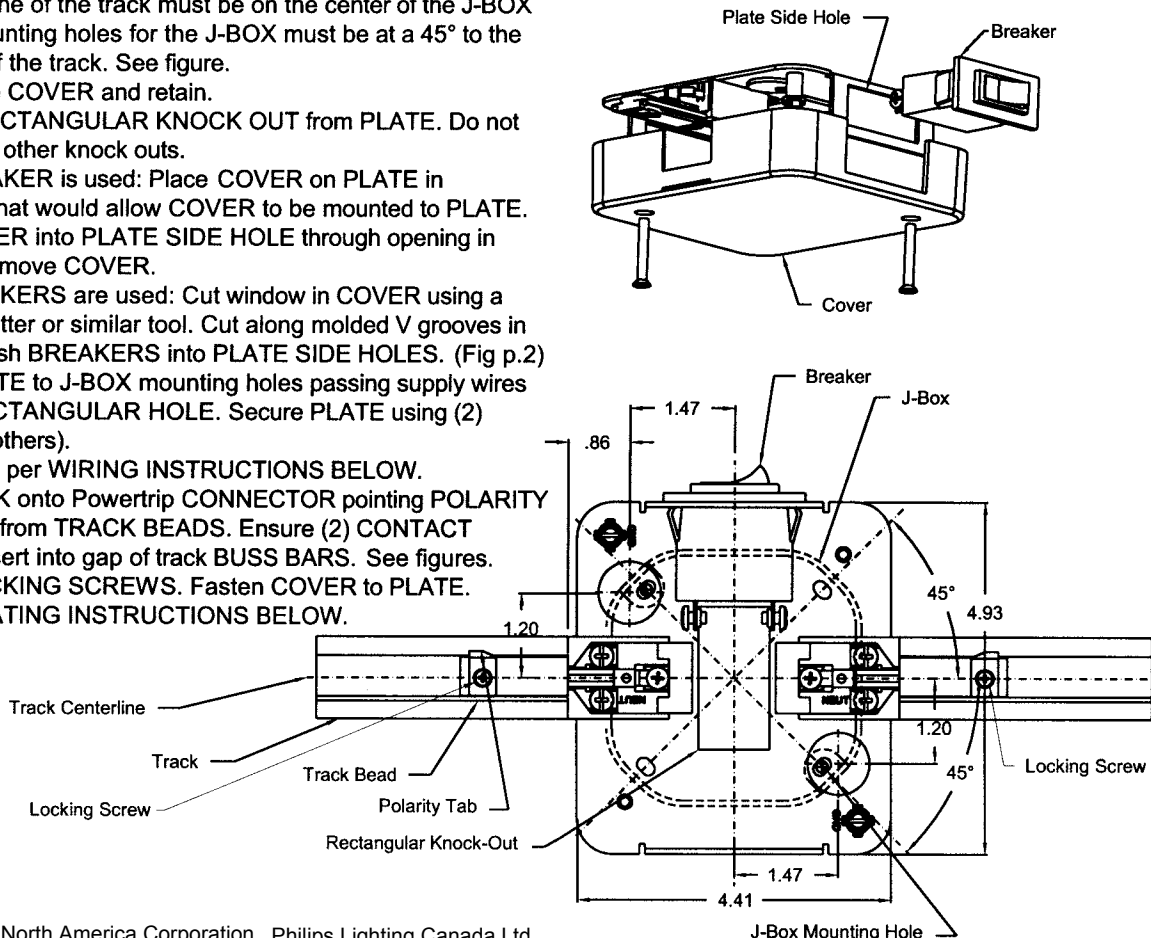
Note: Powertrip connector can be fed using a 4in. octagon junction box, fed directly using flexible or rigid conduit with $\frac{3}{8}$ or $\frac{1}{2}$ electrical connector from solid ceiling or grid runner ceilings, or fed using basic track stem mounting kits. 9033 not for use with stem mounted track. One or two circuits can be fed into the connector. Each circuit requires a different breaker. PowerTrip accepts 2 breakers.

- **TURN OFF POWER AT BREAKER BOX BEFORE INSTALLING PowerTrip AND TRACK.**
- **DO NOT USE ELECTRICAL CONNECTOR AS A CONDUIT SUPPORT. INDEPENDANT CONDUIT SUPPORT IS REQUIRED.**
- **OBSERVE POLARITY: WHITE NEUTRAL WIRE MUST BE CONNECTED TO TERMINAL MARKED "NEUT" IN THE PowerTrip CONNECTOR.**
- **USE 12 OR 14 ga. SOLID WIRE IN CONNECTOR ONLY. CONNECTOR RATING 120V, 20 AMP, 60Hz**
- **USE THE PROPER CURRENT RATED LIGHTOLIER BREAKER TO LIMIT THE LOAD ON THE CIRCUIT. (BREAKER SOLD SEPARATELY).**
- **CONNECTOR IS POLARIZED AND WILL ONLY INSTALL INTO THE TRACK IN ONE DIRECTION. THE TRACK BEADS MUST BE IN-LINE FOR PROPER INSTALLATION.**
- **DO NOT POSITION LUMINAIRE SUCH THAT IT TOUCHES THE PowerTrip CONNECTOR.**
- **DO NOT USE WITH 9100 SERIES STEM MOUNTED TRACK.**

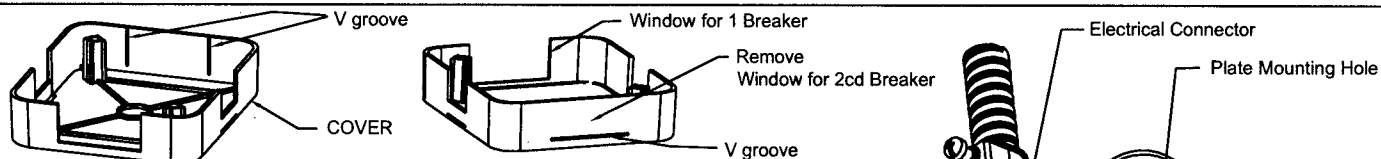
A. INSTALLING PowerTrip CONNECTOR ON A 4" OCTAGON J-BOX.

1. The centerline of the track must be on the center of the J-BOX and the mounting holes for the J-BOX must be at a 45° to the centerline of the track. See figure.
2. Remove the COVER and retain.
3. Remove RECTANGULAR KNOCK OUT from PLATE. Do not remove any other knock outs.
4. If one BREAKER is used: Place COVER on PLATE in orientation that would allow COVER to be mounted to PLATE. Push BEAKER into PLATE SIDE HOLE through opening in COVER. Remove COVER.
5. If two BREAKERS are used: Cut window in COVER using a razor box cutter or similar tool. Cut along molded V grooves in COVER. Push BREAKERS into PLATE SIDE HOLES. (Fig p.2)
6. Fasten PLATE to J-BOX mounting holes passing supply wires through RECTANGULAR HOLE. Secure PLATE using (2) screws (by others).
7. Attach wires per WIRING INSTRUCTIONS BELOW.
8. Slide TRACK onto Powertrip CONNECTOR pointing POLARITY TABS away from TRACK BEADS. Ensure (2) CONTACT BLADES insert into gap of track BUSS BARS. See figures.
9. Tighten LOCKING SCREWS. Fasten COVER to PLATE.
10. See OPERATING INSTRUCTIONS BELOW.

Note: PowerTrip Current Limiter conforms to section 130.d.3 of the California Energy Code.

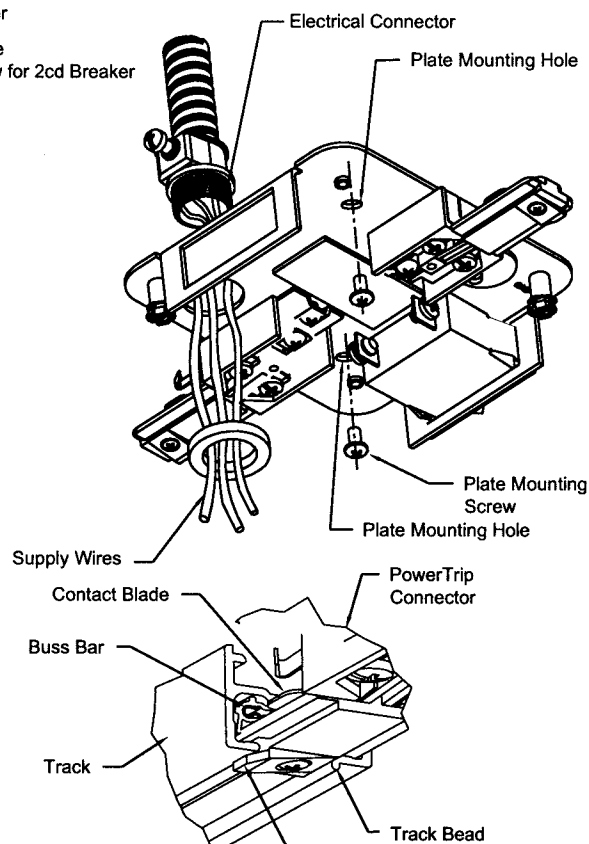


LIGHTOLIER®



B. INSTALLING PowerTrip CONNECTOR USING RIGID OR FLEXIBLE CONDUIT on Solid or Grid Runner Ceilings.

1. Mark the centerline of the PLATE and track on the ceiling to determine the mounting location of the PowerTrip connector.
2. Remove the COVER and retain.
3. Remove one or two ROUND KNOCK OUTS for attaching supply wire connector. Do not remove any other knock outs.
4. If one BREAKER is used: Place COVER on PLATE in orientation that would allow COVER to be mounted to PLATE. Push BEAKER into PLATE SIDE HOLE through opening in COVER. Remove COVER. See figure on page 1.
5. If two BREAKERS are used: Cut window in COVER using a razor box cutter or similar tool. Cut along molded V grooves in COVER. Push BREAKERS into PLATE SIDE HOLES.
6. Make hole in ceiling for supply wires and electrical connector (by others) to pass through. Hole(s) should coincide with ROUND KNOCK OUT(s) in PLATE. See measurements on page 1.
7. Fasten $\frac{3}{8}$ or $\frac{1}{2}$ electrical connector to PLATE. Pass supply wires through connector(s) and PLATE.
8. Mount PLATE to ceiling using two PLATE MOUNTING HOLES. Use suitable ceiling hardware (by others).
9. Attach wires per WIRING INSTRUCTIONS BELOW.
10. Slide TRACK onto Powertrip CONNECTOR pointing POLARITY TABS away from TRACK BEADS. Ensure (2) CONTACT BLADES insert into gap of track BUSS BARS. See figures.
11. Tighten LOCKING SCREWS. Fasten COVER to PLATE.
12. See OPERATING INSTRUCTIONS BELOW.



C. FEEDING CONNECTOR ON STEM MOUNTED BASIC TRACK. 6033 CONNECTOR ONLY.

1. Follow instructions for Basic Track on Instruction sheet IS:7586 included with the stem mounting kits.
2. Install Breaker(s) into Plate Side Hole(s)
3. Wire connector per wiring instructions below.

D. WIRING INSTRUCTIONS.

1. Figures show wiring from round knock out. Wiring will be the same if wiring enters from rectangular hole or from stem mounting kits.
2. All wires must be the same gauge as building supply wires. Wires supplied by others.
3. Wires Wrap around GROUND TERMINAL AND BREAKER TERMINALS, strip insulation enough to wrap copper around terminals. CONTACT TERMINALS accept two wires each and wire doesn't require wrapping. Strip these 7/16".
4. Jumper wires installed by factory can be removed. Loosen CONTACT TERMINAL and remove wire.
5. Wire hot supply wire(s) through Breaker.(See figures) Neutral wire(s) attach to Terminals marked Neut.Ground wire(s) attach to anygreen terminal marked GND. Wrap wire between washer and screwhead on ground terminal. Tighten all terminal screws on wires.

E. OPERATING INSTRUCTIONS. See IS: CLD120

1. Place luminaires on track. Place BREAKER SWITCH to ON position. Turn power ON to supply connector.
2. The BREAKER will automatically switch OFF if its ratings are exceeded. OFF is designated by a red color on the BREAKER SWITCH.
3. If breaker tripped off: reduce the wattage on the track so the total wattage is less than the wattage specified on the BREAKER. Turn the BREAKER SWITCH to ON.

