



Industrial

High bay G16V2

T8 or T5HO



Project: \_\_\_\_\_

Location: \_\_\_\_\_

Cat.No: \_\_\_\_\_

Type: \_\_\_\_\_

Lamps: \_\_\_\_\_ Qty: \_\_\_\_\_

Notes: \_\_\_\_\_

Philips Optimum high bay G16V2 is a high efficiency, 16" wide fluorescent high-bay with hinged socket bar assembly that provides exceptional light distribution for general areas. Applications include warehouses, manufacturing facilities, open construction retail and gymnasiums with the wire guard safety option. This new and unique design adds another beneficial feature to this fixture series. The hinged socket bracket assembly pivots down with a quick release, allowing for immediate access to all internal fixture components.

## Ordering guide

Example: G16V2532122SIE

Family	No. of Lamps	Lamp Type	Voltage	No. of Ballasts	Ballast Type <sup>1</sup>	Reflector	Hanging
<input type="text"/>	<input type="text"/>	<input type="text"/>	<input type="text"/>	<input type="text" value="2"/>	<input type="text"/>	<input type="text"/>	<input type="text"/>
<b>G16V2</b> Postpainted Body	<b>5</b>	<b>32</b> 32WT8	<b>12</b> 120V	<b>2</b>	<b>SI</b> T8 Normal BF Instant Start	<b>E</b> Enhanced Aluminum, 95%	<b>Blank</b> V-Chain Hangers
<b>G16PV2</b> Economical Prepainted Body	<b>6</b>	<b>54</b> 54WT5HO	<b>27</b> 277V <b>34</b> 347V <b>UV</b> 120-277V <b>HV</b> 347-480V <b>48</b> 480V		<b>HI</b> T8 High BF Instant Start <b>PS</b> T8/T5HO, Normal BF Program Start <b>PSH</b> T8 High BF Program Start	<b>W</b> White Aluminum, 92% <b>W95</b> White Aluminum, 95%	<b>PSJB[R]<sup>2</sup></b> Pendant Stabilizer/ Slide-on Junction Box Combo <b>PS[R]<sup>2</sup></b> Pendant Stabilizer <b>QC</b> Quick Hang Cable Kit (10') <b>QC( )</b> Quick Hang Cable Kit (Specify Length) <b>SPSH[R]<sup>2</sup></b> 12" Stem / PS / Hook <b>SPST[R]</b> 12" Stem / PS / Toggle

## Footnotes

- <sup>1</sup> Consult factory for additional ballast options
- <sup>2</sup> Fixture housing ready for hanging hardware - not included, see Accessories
- <sup>3</sup> T8 configuration requires Program Start ballast for optimal performance
- <sup>4</sup> Voltage must be specified
- <sup>5</sup> Factory installation only available for fixtures including wire guard (WG/WWG); otherwise, lamps quoted/shipped separate from fixture.

## General Notes

- Many luminaire components, such as reflectors, refractors, lenses, sockets, lampholders, and LEDs are made from various types of plastics which can be adversely affected by airborne contaminants. If sulfur based chemicals, petroleum based products, cleaning solutions, or other contaminants are expected in the intended area of use, consult factory for compatibility.

## Options

<b>C6</b>	6' Single Circuit Cord
<b>C( )</b>	Single Circuit Cord (Specify Length)
<b>TL6(L5-15P)</b>	6' Cord with Twist Lock Plug (120V)
<b>TL6(L7-15P)</b>	6' Cord with Twist Lock Plug (277V)
<b>E(450)</b>	T8 Emergency Pack, 450 Lumens
<b>E(700)</b>	T8 Emergency Pack, 700 Lumens
<b>E(1350)</b>	T8 Emergency Pack, 1350 Lumens
<b>E(1250)</b>	T5HO Emergency Pack, 1250 Lumens
<b>F</b>	Inline Fuse
<b>SC</b>	10' Safety Cable
<b>WG</b>	Wire Guard (Unpainted)
<b>WWG</b>	White Wire Guard
<b>OS<sup>3</sup></b>	Occupancy Sensor, On/Off (up to 347V)
<b>OS( )<sup>3</sup></b>	Occupancy Sensor (Specify Lamps on Low/Lamps on High)
<b>OS(480V)</b>	480V Occupancy Sensor, On/Off
<b>OS(P)<sup>4</sup></b>	Occupancy Sensor, On/Off with Photocell
<b>PC<sup>4</sup></b>	Photocell
<b>SDT(347V)</b>	Step Down Transformer (Only required for T5HO EM Pack)
<b>SDT(480V)</b>	Step Down Transformer (Only required for T8/T5HO EM Pack)

## Lamp Color<sup>5</sup>

<b>blank</b>	Lamps Not Included
<b>830</b>	
<b>835</b>	
<b>841</b>	
<b>850</b>	

## Lamp Options

<b>blank</b>	Standard Lamps
<b>ADV</b>	T8 High Performance
<b>ES( )</b>	T8/T5HO Energy Saver (Specify Wattage)



# G16V2 high bay, fluorescent

T8 or T5HO

## Heat Dissipation

- The arc bottom to the fixtures in this series creates a means for exceptional heat dissipation. Removing heat build-up allows lamps to perform at their maximal lumen output temperature rating. Additionally, as heat rolls off the sides of this fixture, this reduces the possibility of dirt build up on the reflectors and at the vent holes.

## Light Distribution

- The bottom arc angle of this fixture series provides a wide distribution pattern excellent for use in general or open areas. When used in aisles with racking or shelving, turning this fixture perpendicular to the aisle allows the bottom arc to throw light evenly along the floor, lighting between the fixtures. The arced bottom also enhances the vertical footcandles, providing more even illumination down the product walls.

## Mounting Methods

- G16V2 fixtures offer flexible mounting methods that most commonly include: standard chain hangers and surface mounting. There are several other mounting options for this fixture series, and they are listed as "hanging options" below.

## Hanging Options

- Surface Mount [Mounting holes provided in the housing] (Standard)
- Chain Mount [Chain hangers are supplied with the fixture] (Standard)
- Quick Cable [QC – Quick hang cable system] (Optional)
- Junction Box [JB – Slide-on splice box for 3/4" stem] (Optional)
- Pendant Stabilizer [PS – Bracket for stabilizing fixture when single point hanging with a 3/4" stem] (Optional)
- Quick Bracket System [QB – Innovative hanging system for easy installation. Available with various connection points] (Optional)
- Hook [SPSH – 12" Stem, pendant stabilizer & hook for hanging in loop or eye-bolt] (Optional)
- Quick Toggle [SPST – 12" Stem, pendant stabilizer & quick toggle]

## Product Construction

- The G16V2 fixture housing is brake formed from heavy gauge cold rolled steel. Ends and socket plates are permanently riveted together for strength and rigidity. The housing is post painted with a durable, highly reflective powder-coat finish. A pre-finished housing is available as an option.

## Hinged Down Socket Bar Assembly

- This allows quick and easy access to the fixture components for quick and hassle free maintenance.

## Optical Reflector

- The system is precision brake formed of the selected aluminum material, enhanced aluminum or highly reflective white. The reflector system is removable without the use of tools, using 1/4 turn fasteners to secure it in place.

## Lampholders

- Made of a Polycarbonate material; these locking-style lampholders are utilized to ensure positive lamp retention. Additionally, the material contributes to a longer life product in high temperature applications.

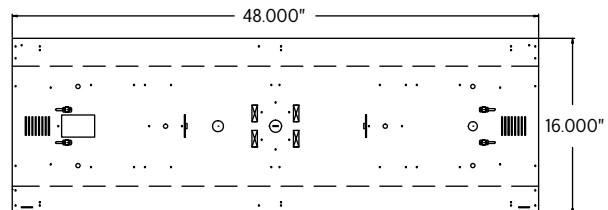
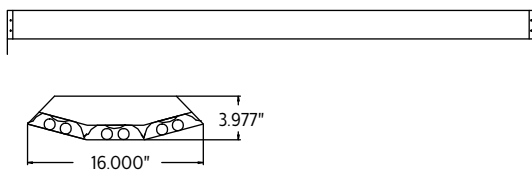
## Ballasts

- All ballasts are electronic programmed-start (T5HO) or instant-start (T8) as a standard. Optional ballasts are available, consult factory for available systems and system specifications. Available voltages: 120V, 277V, 347V, voltage sensing 120-277V and 347-480V.

## Listings

- All fixtures are UL and CUL listed.

## Dimensions



# G16V2 high bay, fluorescent

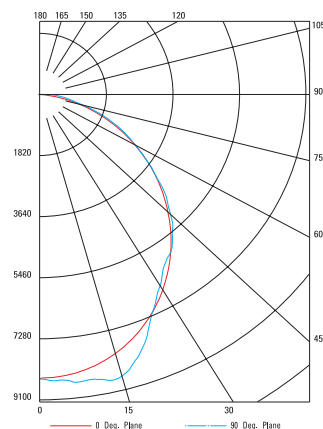
T8 or T5HO

## Photometry

### G16V2 6 Lamp 54WT5HO

**Catalog No.** G16V2654UV2PSE841  
**Test No.** 9705  
**Spacing Criteria** 1.2 @ 0°  
1.2 @ 90°  
**Lamp Type** 54WT5HO  
**Total Luminaire Efficiency** 90.9%

#### Candlepower



#### Light Distribution

Degrees	Lumens	% Lamp	% Luminaire
0-30	6808	25.8	28.4
0-40	10995	41.6	45.8
0-60	19073	72.2	79.5
0-90	23980	90.8	99.9
90-180	15	0.1	0.1
0-180	23995	90.9	100.0



Some luminaires use fluorescent or high intensity discharge (HID) lamps that contain small amounts of mercury. Such lamps are labeled, "Contain Mercury" and/or the symbol "HG". Lamps that contain mercury must be disposed of in accordance with local requirements. Information regarding lamp recycling and disposal can be found at [www.lamprecycle.org](http://www.lamprecycle.org)

