

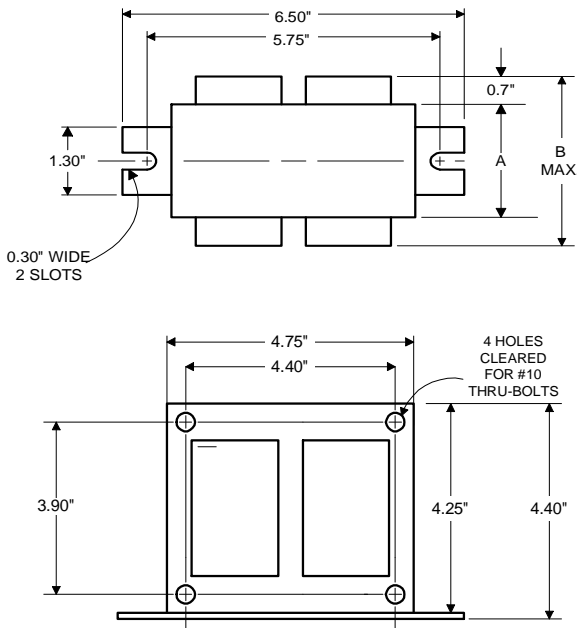
PHILIPS ADVANCE

Metal
Halide
Lamp Ballast

Catalog Number 71A5792EE
For 250W M138/M153 (P.S.)
60 Hz SUPER-CWA
Status: Active

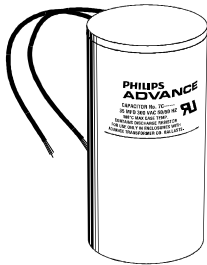
DIMENSIONS AND DATA

4 1/4 X 4 3/4 CORE - 2 COIL UNIT



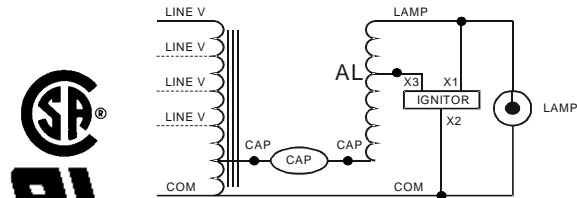
| | 120 | 208 | 240 | 277 |
|--|----------------|-----------|-----------|-----------|
| INPUT VOLTS | | | | |
| CIRCUIT TYPE | SUPER-CWA | | | |
| POWER FACTOR (min) | 93% | | | |
| REGULATION | | | | |
| Line Volts | ±10% | | | |
| Lamp Watts | ±10% | | | |
| LINE CURRENT (Amps) | | | | |
| Operating..... | 2.52 | 1.44 | 1.26 | 1.10 |
| Open Circuit..... | 1.10 | 0.64 | 0.55 | 0.48 |
| Starting..... | 2.27 | 1.34 | 1.13 | 0.98 |
| UL TEMPERATURE RATINGS | | | | |
| Insulation Class | H(180°C) | | | |
| Coil Temperature Code | 1029 | | | |
| MIN. AMBIENT STARTING TEMP. | -20°F or -30°C | | | |
| NOM. OPEN CIRCUIT VOLTAGE | 280 | | | |
| INPUT VOLTAGE AT LAMP DROPOUT..... | 60 | 104 | 120 | 138 |
| INPUT WATTS | 284 | | | |
| RECOMMENDED FUSE (Amps)..... | 8 | 5 | 5 | 3 |
| CORE and COIL | | | | |
| Dimension (A) | 1.61 | | | |
| Dimension (B) | 3.55 | | | |
| Weight (lbs.) | 9.7 | | | |
| Lead Lengths | 12" | | | |
| CAPACITOR REQUIREMENT | | | | |
| Microfarads | 17.0 | | | |
| Volts (min.) | 340 | | | |
| Fault Current Withstand (amps) | | | | |
| 60 Hz TEST PROCEDURES (Refer to Advance Test Procedure for HID Ballasts - Form 1270) | | | | |
| High Potential Test (Volts) | | | | |
| 1 minute | 2000 | | | |
| 2 seconds | 2500 | | | |
| Open Circuit Voltage Test (Volts) | 254-308 | | | |
| Short-Circuit Current Test (Amps) | | | | |
| Secondary Current | 2.42-2.96 | | | |
| Input Current..... | 1.79-2.68 | 1.03-1.59 | 0.89-1.34 | 0.77-1.16 |

Capacitor: 7C170P40



Capacitance: 17
Dia/Oval Dim: 1.75
Height: 3.75
Temp Rating: 105°C

Wiring Diagram:



Ordering Information

Order Suffix

Description

Ignitor: LI533-H4



Ballast to Lamp Distance
(BTL) = 2 feet
Temp Rating: 105°C

Data is based upon tests performed by Philips Lighting Electronic N.A. in a controlled environment and representative of relative performance. Actual performance can vary depending on operating conditions. Specifications are subject to change without notice.

Philips Lighting Electronic N.A.

10275 West Higgins Road · Rosemont, IL 60018 · Tel:800-322-2086 Fax:888-432-1882
Customer Support/ Technical Service:800-372-3331 · OEM Support: 866-915-5886

02/19/13