

READ AND UNDERSTAND THESE INSTRUCTIONS BEFORE INSTALLING FIXTURE.

This fixture is intended for installation in accordance with the National Electrical Code and local or Federal code specifications. To assure full compliance with codes and regulations, check with your local electrical inspector before installation. To prevent electric shock, turn off electricity at fuse box before proceeding.

Retain these instructions for maintenance reference.

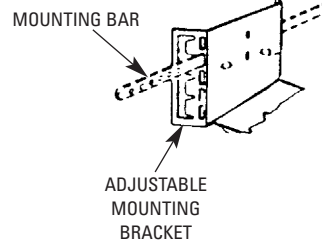
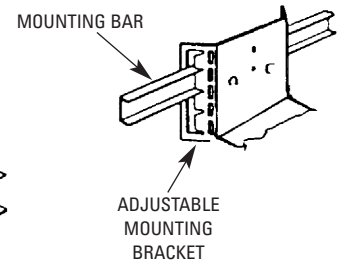
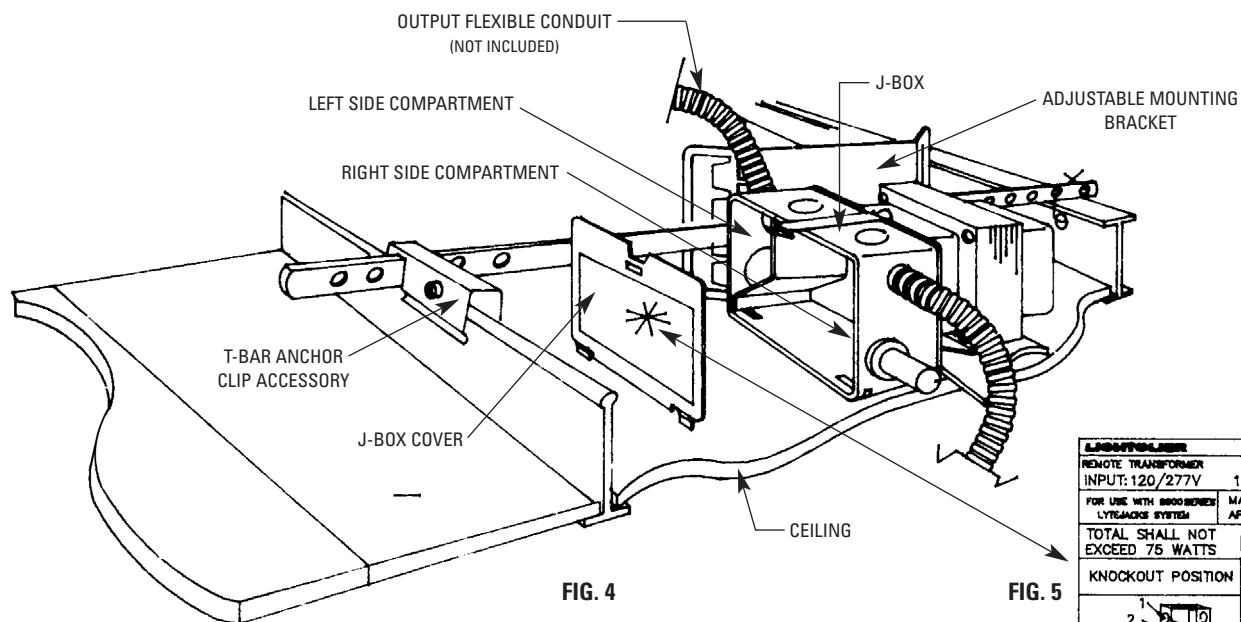
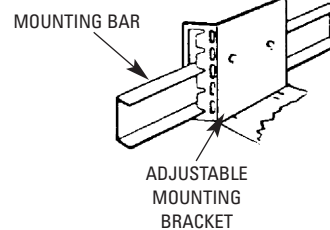
INSTRUCTION SHEET NO.**IS:8608****A0300****Page 1 of 2****INSTALLATION OF 75W REMOTE TRANSFORMER
FOR USE WITH 8605 POINT POWER JACKS**

NOTE: ACCESS ABOVE CEILING OR BEHIND WALL REQUIRED.

THIS TRANSFORMER IS USED TO SUPPLY 12V TO ONE 75W, OR 50W POINT JACK OR TWO 35W POINT POWER JACKS FROM 120V OR 277V BRANCH CIRCUIT.

WARNING: (RISK OF FIRE) DO NOT INSTALL INSULATION WITHIN 3" OF TRANSFORMER SIDES OR WIRING COMPARTMENT, NOR ABOVE TRANSFORMER IN SUCH A MANNER AS TO ENTRAP HEAT

1. Install TRANSFORMER ASSEMBLY using the ADJUSTABLE MOUNTING BRACKETS.
2. With MOUNTING BARS (order separately) (18" Cat. No. 1950; 27" Cat. No. 1951), using rectangular slots as shown (Fig. 1).
3. 3/4" CHANNELS (by others) (Fig. 2).
4. With 1 1/2" CHANNELS (by others) (Fig. 3).
5. For T-bar ceilings, T-BAR ANCHOR CLIPS ACCESSORY No. 1956 (order separately) may be used with 18" or 27" MOUNTING BARS for quick mounting (see left T-BAR) or simply wire MOUNTING BARS to ceiling runner (see right T-BAR) (Fig. 4).

FIG. 1**FIG. 2****FIG. 3****FIG. 4****FIG. 5**

LIGHTOLIER REMOTE TRANSFORMER		CAT. # 8608	
REMOTE TRANSFORMER	INPUT: 120/277V	TOTAL OUTPUT	12V 75VA MAX.
FOR USE WITH BROOKHOLM LYTENAKS SYSTEM		MARK AN "X" IN THE APPROPRIATE BOX(ES)	
TOTAL SHALL NOT EXCEED 75 WATTS		35W	75W
KNOCKOUT POSITION		1.	2.
OUTPUT		1.	2.
		ACCESS ABOVE CEILING REQUIRED	
		L-8608	

READ AND UNDERSTAND THESE INSTRUCTIONS BEFORE INSTALLING FIXTURE.

This fixture is intended for installation in accordance with the National Electrical Code and local or Federal code specifications. To assure full compliance with codes and regulations, check with your local electrical inspector before installation. To prevent electric shock, turn off electricity at fuse box before proceeding.

Retain these instructions for maintenance reference.

6. Attach the BRANCH CIRCUIT CONDUIT to the larger RIGHT SIDE COMPARTMENT of the J-BOX.
7. Connect the INPUT wires (using wire nuts) in the RIGHT SIDE COMPARTMENT as follows:
 - a. INPUT GROUND WIRE to the bare wire.
 - b. INPUT WHITE WIRE to the WHITE wire.
 - c. The 120V or 277V "hot" INPUT lead to the BLACK lead coming from the THERMAL PROTECTOR.
 - d. The BLUE wire with the male connector, to the appropriate female connector. BLACK for 120V, RED for 277V.
8. Attach OUTPUT FLEXIBLE CONDUIT (not included) between the smaller LEFT SIDE COMPARTMENT of the J-BOX and the POINT POWER JACK(S).
9. Connect the OUTPUT wires in the LEFT SIDE COMPARTMENT directly to the wires coming from the POINT POWER JACK(S) (using wire nuts). Extending the wire will increase the voltage drop and will affect the brightness and color of the light.
10. Indicate with an "X" in the appropriate square(s) on the label mounted to the outside of the J-BOX COVER.

If one POWER JACK is being wired, mark an "X" in the box under the 75W column.

If two POWER JACKS are being wired, mark an "X" in each box under the 35W column.

WIRING DIAGRAM