

LuxSpace G3 ANZ

DN478/DN488/DN498

Mounting instruction

Vision date: 24-08-2016
www.lighting.philips.com

DN478(CAU)-M002 V2.0



IEC
AS/NZS 60598



ta
25°C

Indoor
use only



Type Number

Lum.Power

CCT

Class

UGR

Voltage

Frequency



Micro	DN478	7W	3000K 4000K	I	22	220-240V	50/60 Hz	0.85
Mini	DN488	10W		I	22	220-240V	50/60 Hz	1.05
Compact Power	DN498	20W		II	22	220-240V	50/60 Hz	1.9

Unit: mm

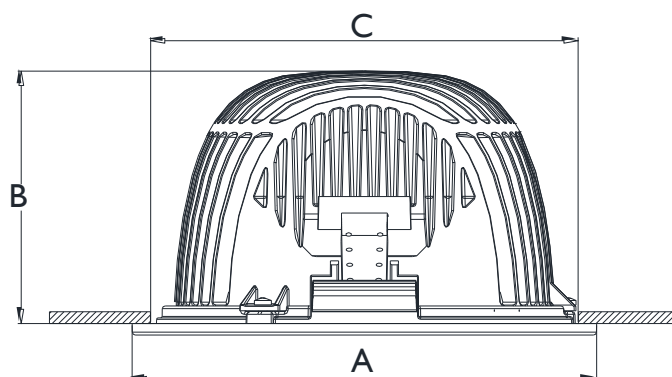
Type Number

A

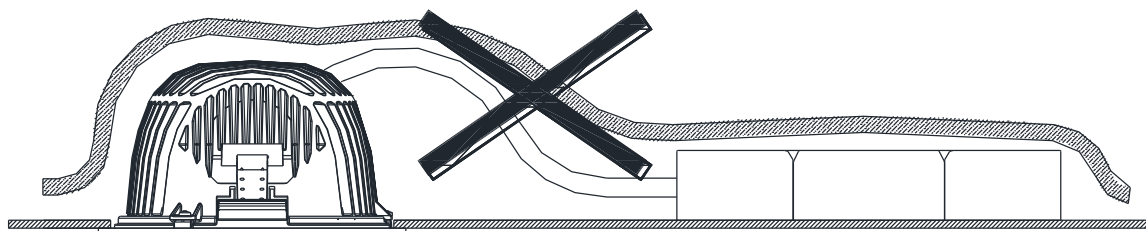
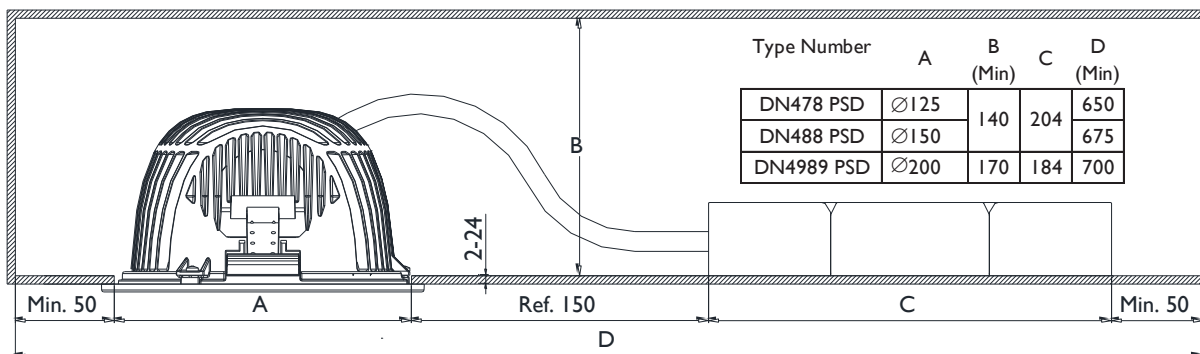
B

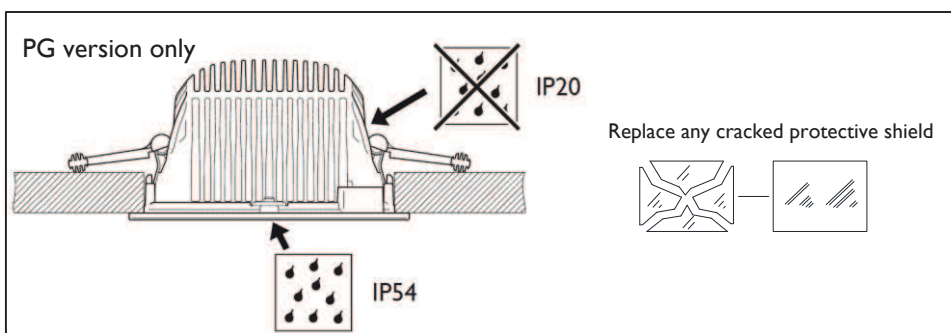
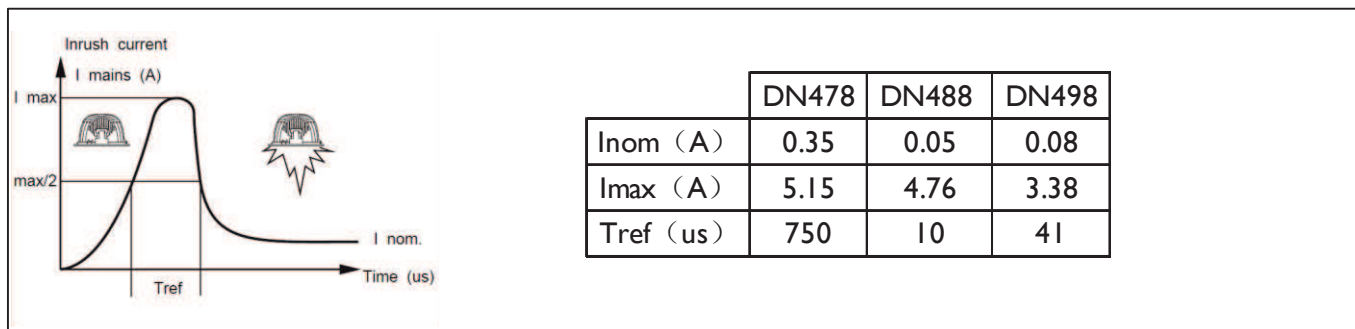
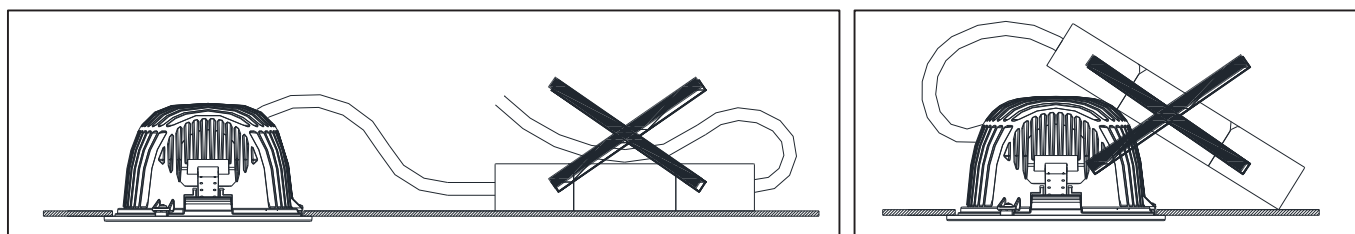
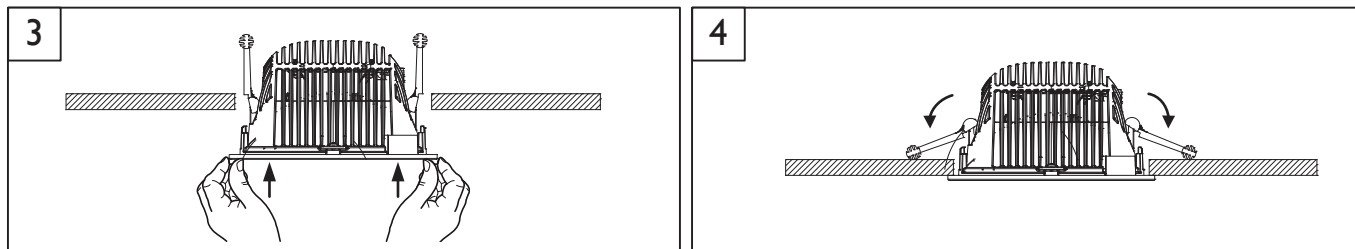
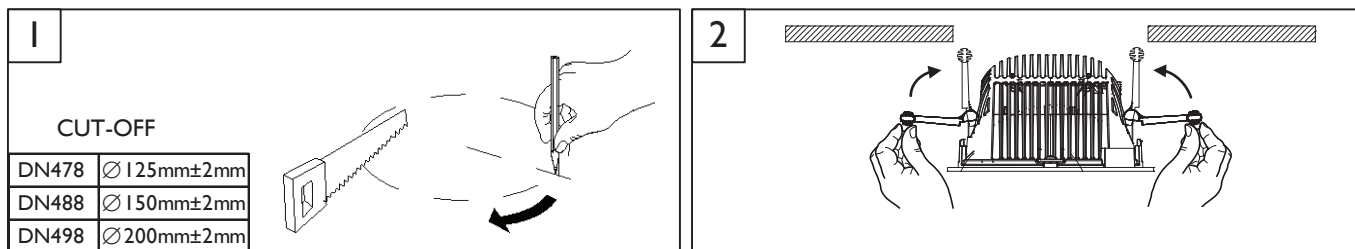
C

DN478	Ø 137	71	Ø 125
DN488	Ø 163	88.5	Ø 150
DN498	Ø 218.3	119.5	Ø 200



Unit: mm





1. The luminaire shall be installed by a qualified electrician and wired in accordance with the latest IEE electrical regulations or the national requirements.
2. For indoor use only at room temperature.
3. When cleaning the product, please use dry soft cotton cloth only.
4. Don't switch on before complete installation.
5. If the power cord gets damaged within the warranty period, please have it replaced by Phillips nominated dealer.
6. The luminaire shall, under no circumstances be covered or abutted with building insulation or be installed in a residential installation.
7. Do not hot swap! LED heat sink module must not be disconnected with line power on failure. To do so may damage the product.
8. Luminaire must not be used or stored in corrosive environment where hazardous materials such as Sulphur, Chlorine, phthalates, etc, are present.