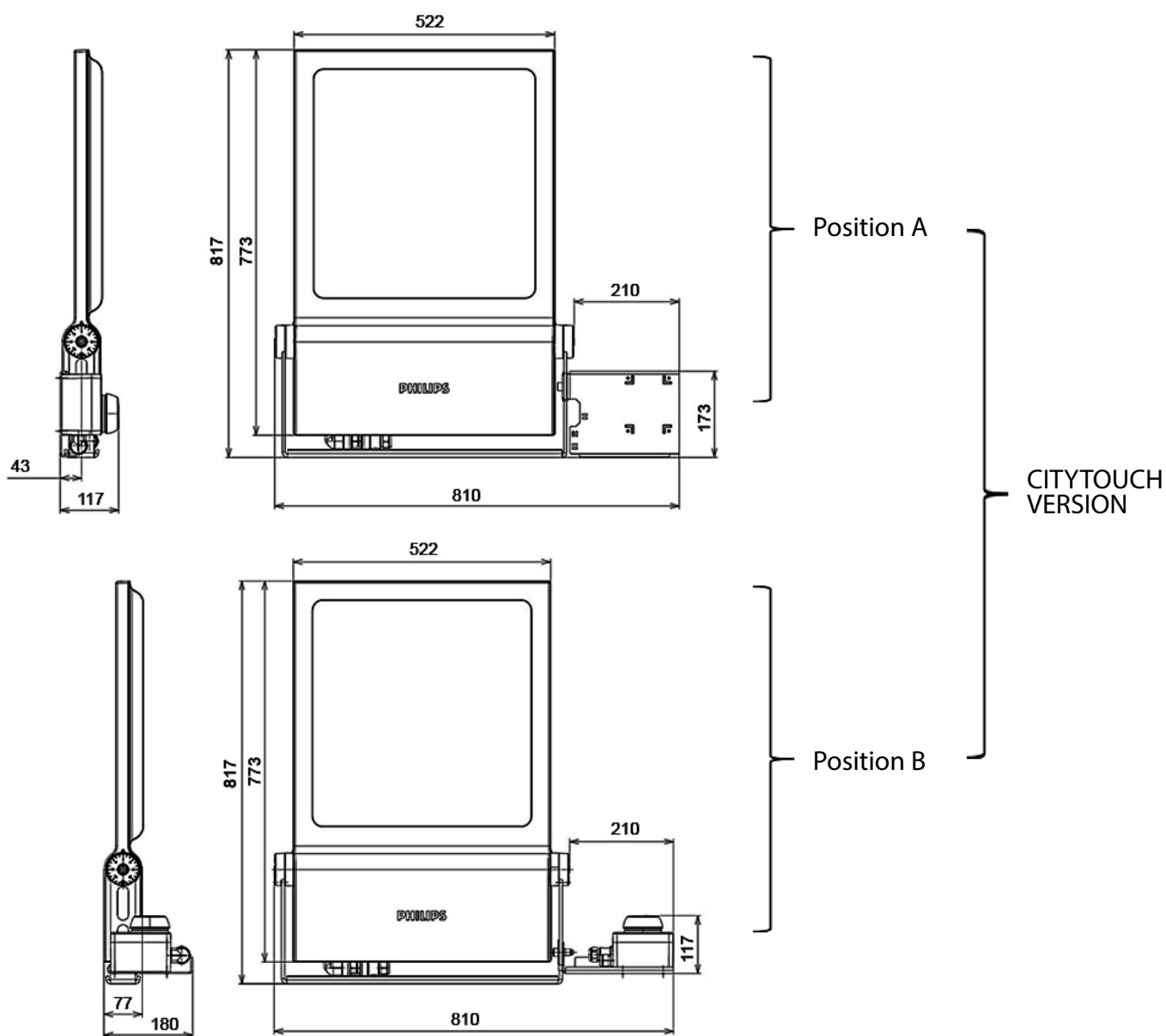


STANDARD VERSION

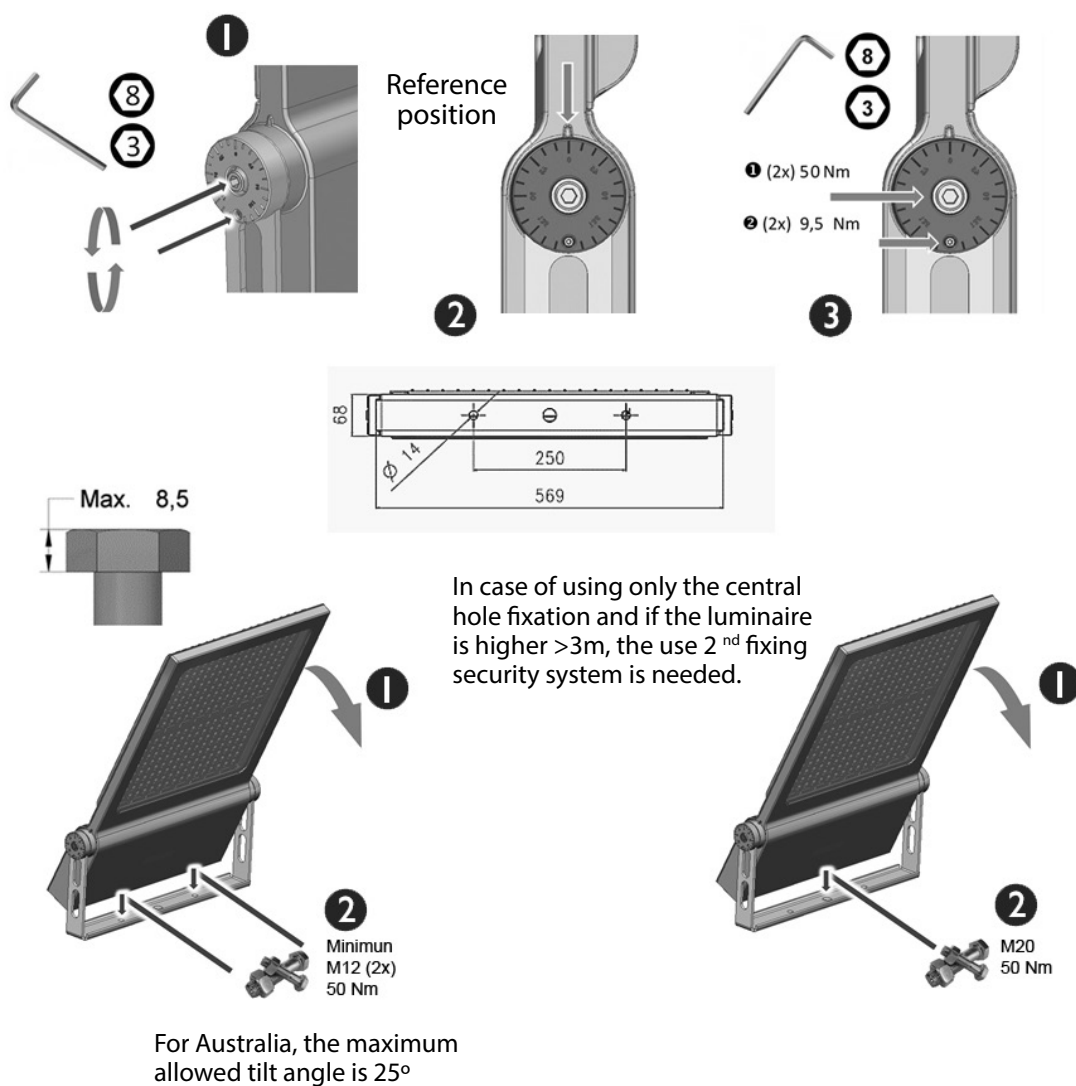


This luminaire must be installed only by qualified personnel



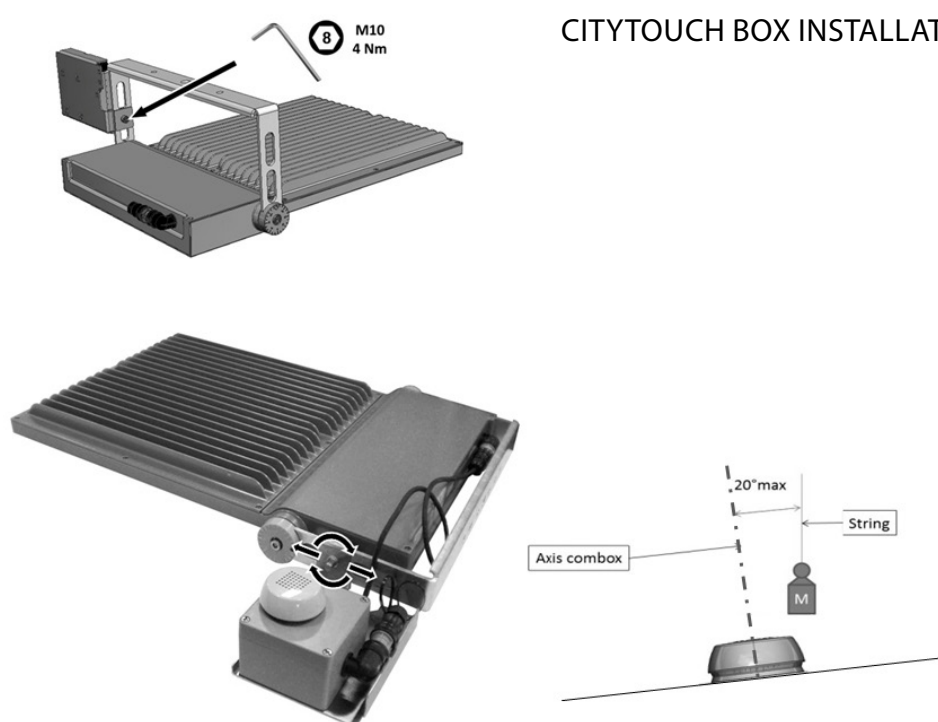
Disconnect before servicing

BRACKET FIXATION



1

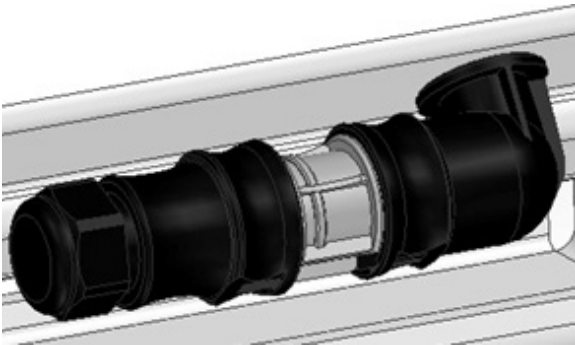
CITYTOUCH BOX INSTALLATION / FIXATION



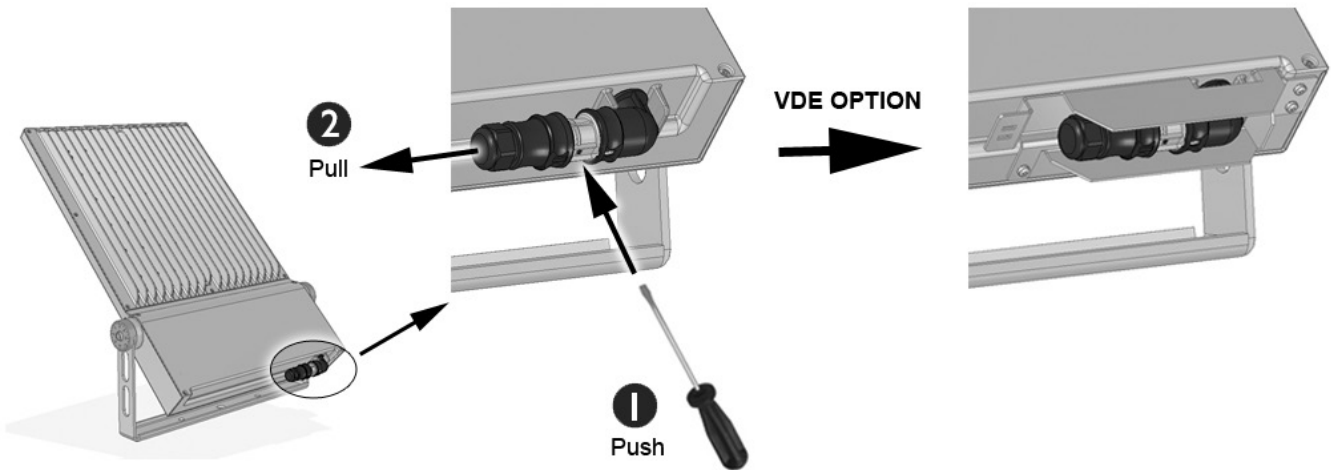
2

STANDARD, CONTROL LINE, DALI, DALI IN/OUT CONNECTIONS

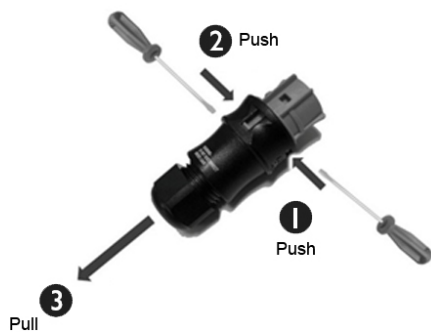
MAIN CONNECTOR
Ø10-14 mm 2-4 mm²



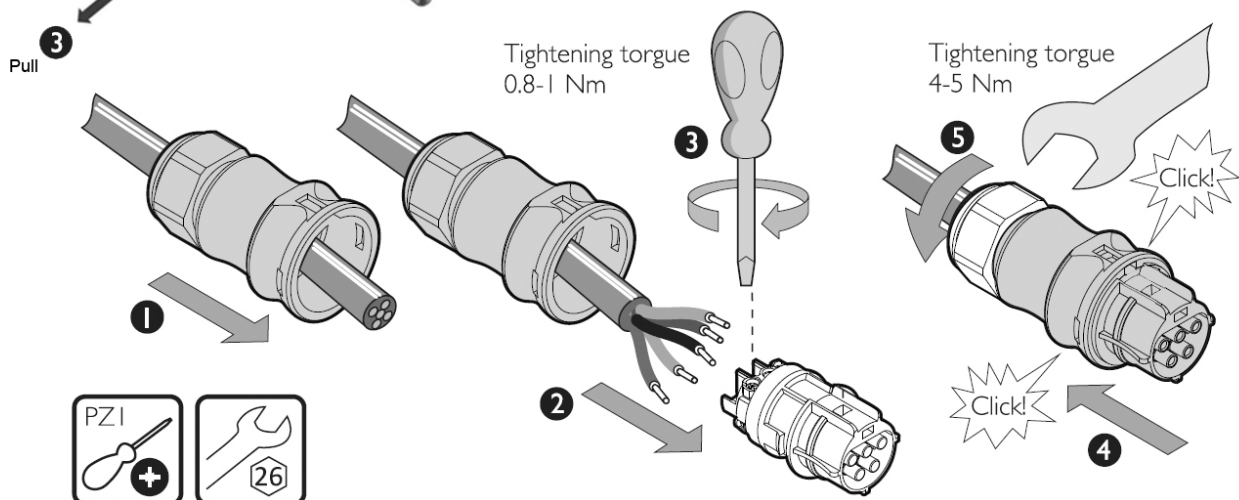
SECONDARY CONNECTOR (2x)
(Only DALI IN/OUT versions)
Ø7-12 mm 0,5-1,5 mm²



WIRE CONNECTION TO WIELAND






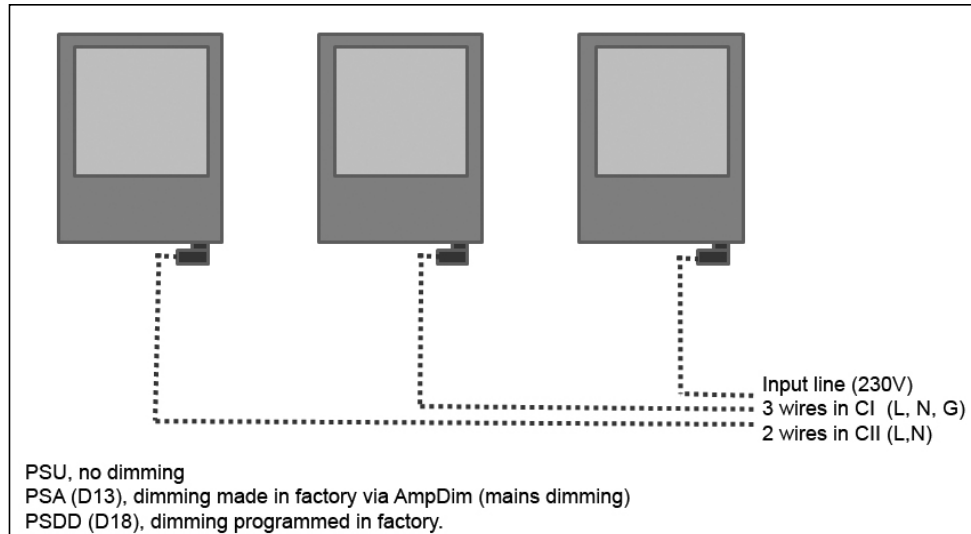
The connectors are not for current interrupting.
Never connect or disconnect under load.



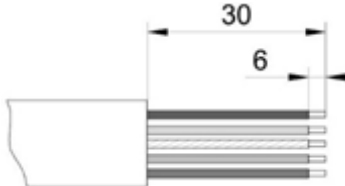
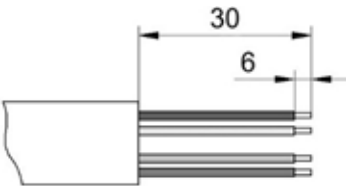

TYPES OF MAIN CONNECTOR

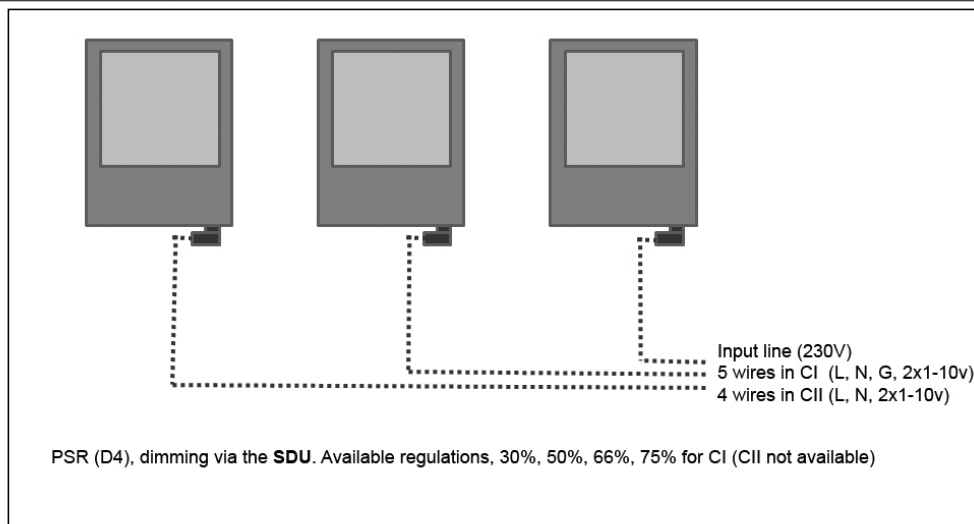
PSU, PSA (D13), PSDD (D18) CONNECTION

Main connector Class-I			Main connector Class-II		
	L	LINE (Brown)		1	LINE (Brown)
		GROUND (Yellow & Green)		2	-
	N	NEUTRAL (Blue)		3	NEUTRAL (Blue)
	1	-		4	-
	2	-		5	-

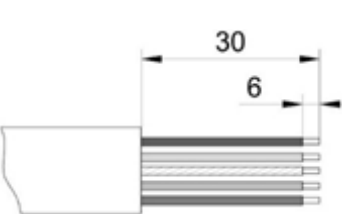
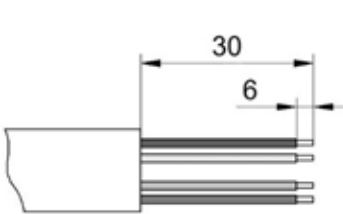



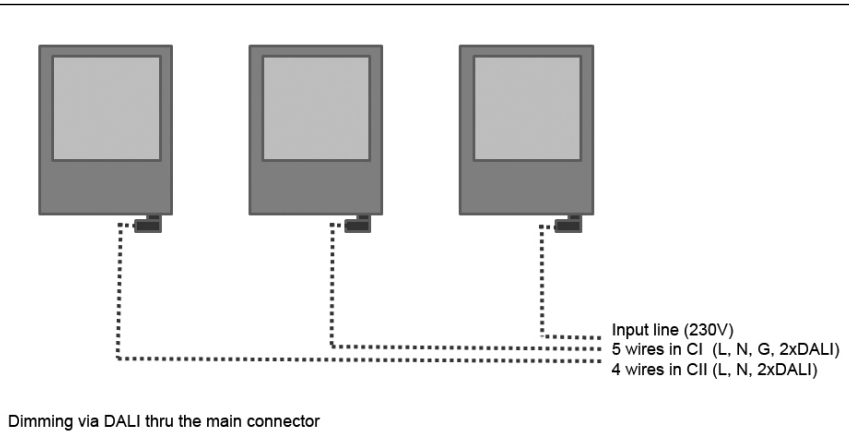
PSR (D4) CONNECTION

Main connector Class-I			Main connector Class-II		
	L	LINE (Brown)		1	LINE (Brown)
		GROUND (Yellow & Green)		2	-
	N	NEUTRAL (Blue)		3	NEUTRAL (Blue)
	1	Lc		4	Lc
	2	Nc		5	Nc

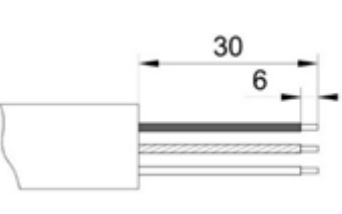
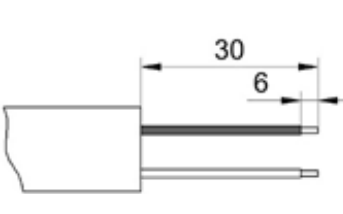

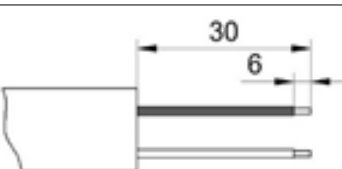
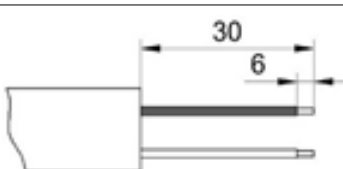


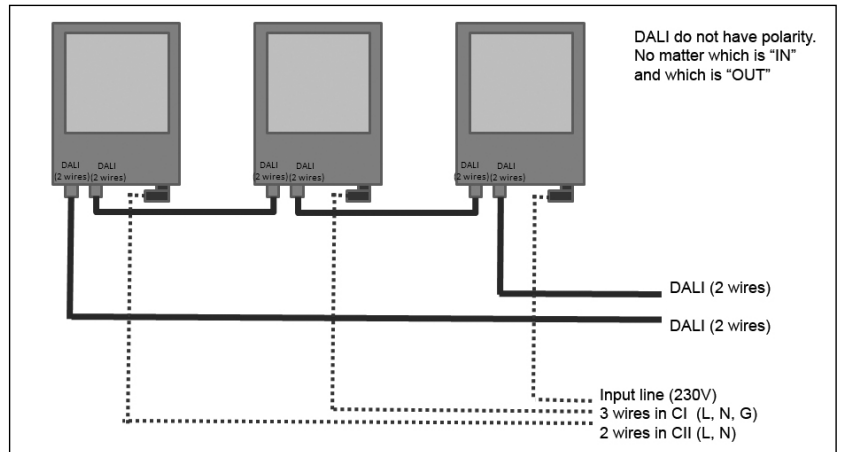
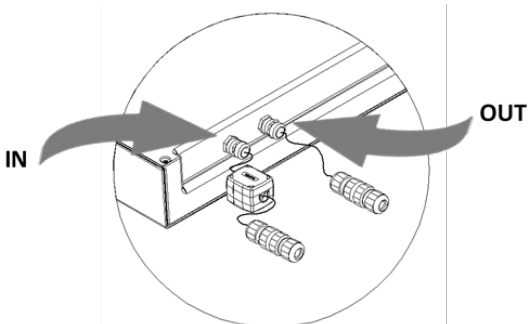
PSD, (D9) CONNECTION

Main connector Class-I			Main connector Class-II		
	L	LINE (Brown)		1	LINE (Brown)
		GROUND (Yellow & Green)		2	
	N	NEUTRAL (Blue)		3	NEUTRAL (Blue)
	1	DALI		4	DALI
	2	DALI		5	DALI



DALI IN/OUT CONNECTION

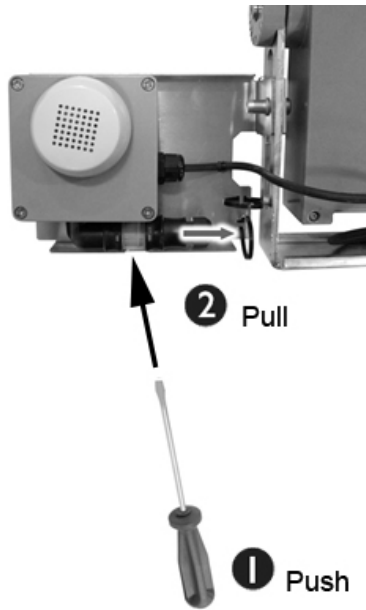
Main connector Class-I			Main connector Class-II		
	L	LINE (Brown)		1	LINE (Brown)
		GROUND (Yellow & Green)		2	-
	N	NEUTRAL (Blue)		3	NEUTRAL (Blue)
	1	-		4	-
	2	-		5	-
Secondary connector Class-I			Secondary connector Class-II		
	1	DALI		1	DALI
	2	DALI		2	DALI



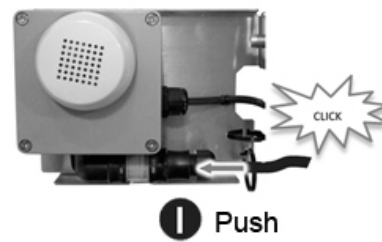
CITYTOUCH CONNECTION

Ø10-14 mm 2-4 mm²

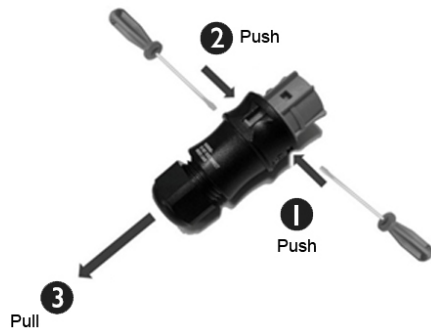
OPEN MAIN CONNECTOR



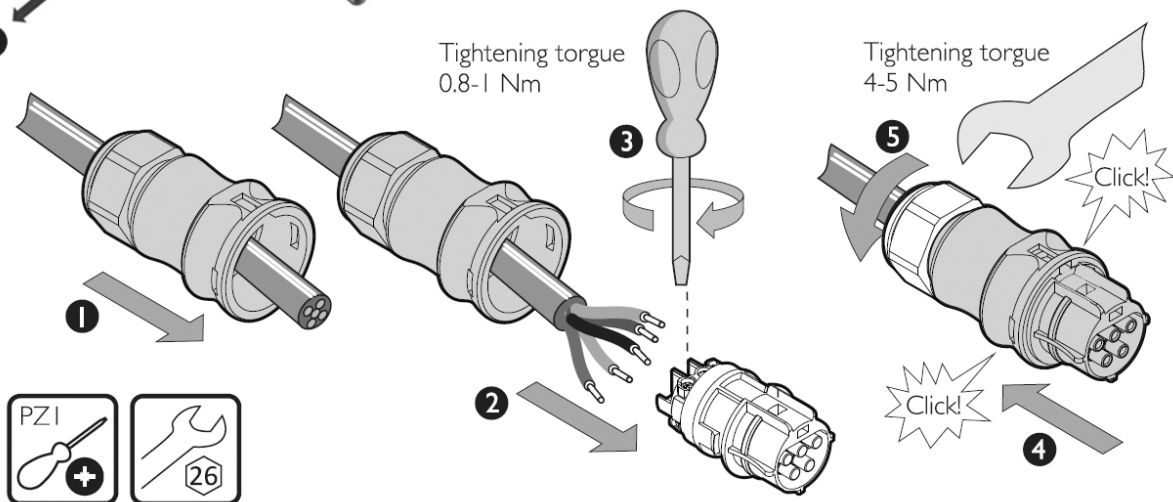
CLOSE MAIN CONNECTOR



WIRE CONNECTION TO WIELAND

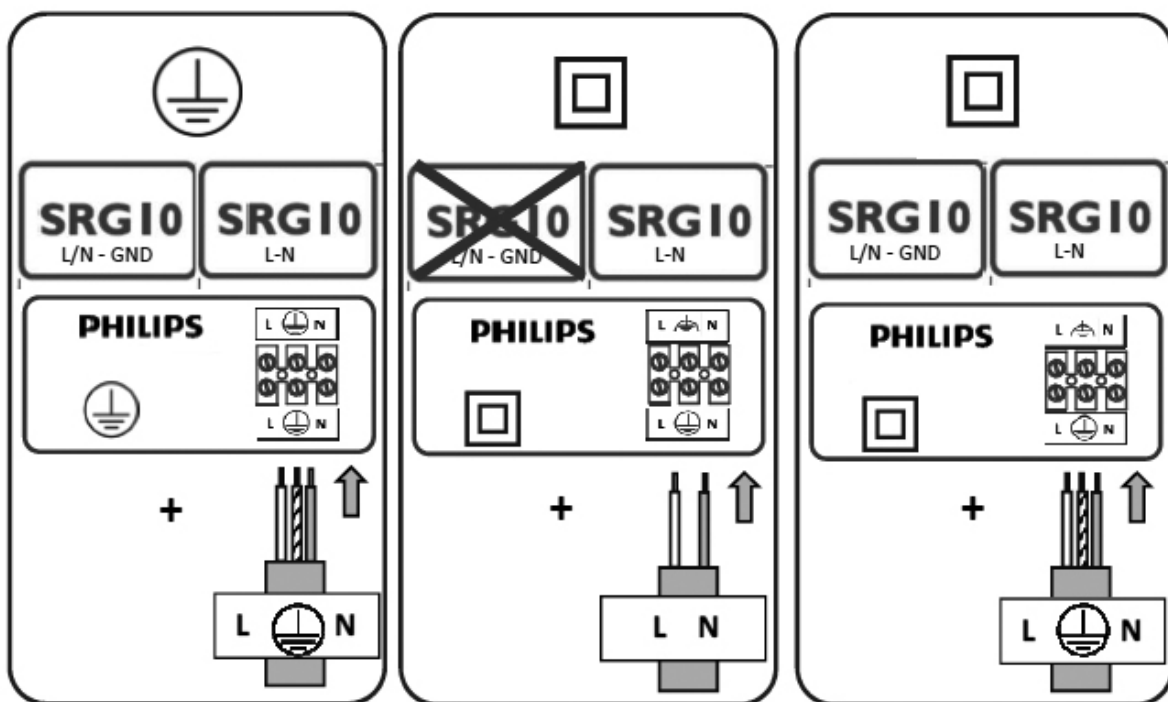


The connectors are not for current interrupting. Never connect or disconnect under load.



CITYTOUCH CONNECTION

Main connector Class-I			Main connector Class-II		
	L	LINE (Brown)		1	LINE (Brown)
		GROUND (Yellow & Green)		2	-
	N	NEUTRAL (Blue)		3	NEUTRAL (Blue)
	1	DALI		4	DALI
	2	DALI		5	DALI





© 2016 Philips Lighting Holding B.V.

All rights reserved. Reproduction in whole or in part is prohibited without consent of the copyright owner.

The information presented in this document does not form part of any quotation or contract. It is believed to be accurate and reliable and may be changed without notice. No liability will be accepted by the publisher for any consequence of its use. Publication thereof does not convey nor imply any license under patent or other industrial or intellectual property rights.

Philips Lighting Holding B.V.
The Netherlands