

**PHILIPS  
LUMEC**

Urban

MetroScape



**Classic elegance**  
meets advanced  
lighting technology



# Inspired by tradition, focused on performance

## All you need to meet the most demanding path and street lighting requirements

The Philips Lumec MetroScape family of LED pendant and post top luminaires is ideal for enhancing the architectural identity of environments with a heritage appeal. Perfectly scaled in both proportion and performance for the demands of various pedestrian and roadway applications, MetroScape provides a consistent style for your entire lighting project.

Substantially more energy-efficient than HID luminaires thanks to industry-leading LED technology, MetroScape is the right choice for cities and utilities seeking cost-effective, relamping-free outdoor lighting. Its IP66 rating, multiple lumen outputs and energy-saving control options are well suited to meet a wide range of project requirements, including those of intersection lighting. In addition, exceptional thermal management extends LED component life while helping to maximize operations and maintenance savings.





Urban	.....
MetroScape	.....
At a glance	.....

## Classic Elegance

### Bold Design

MetroScape LED luminaires allow you to create durable, visually appealing outdoor lighting projects while providing energy savings and a sense of security. They are well suited for municipal projects that range from simple recreational settings to more extensive boulevard lighting right through to architectural installations. Their shape, reminiscent of another era, adds warmth and charm to the surrounding environment, and integrates especially well with old-style buildings and revitalized heritage sites.

### State-of-the-art Optics

The optical system is composed of high-performance polymer refractor lenses which not only deliver pole spacing up to seven times the mounting height, but also optimize target lumens for superior lighting uniformity and intensity on the ground or street. The flat lens design eliminates uplight, which addresses the light pollution concerns of municipalities.

### Environmentally Engineered

MetroScape offers several sustainable features, starting with industry-leading LED drivers for minimal power loss and exceptional longevity. Luminaires are eco-designed for end-of-life disassembly and recycling, while LEDs contain no mercury nor hazardous materials. The end result is a reduced ecological footprint and the ability to project a greener image to stakeholders.

## Advanced Technology

### High-Performance LEDs

Both MetroScape luminaire versions are optimized for LED lighting and powered by the LEDgine platform. LEDgine is compatible with the most advanced digital technology and lighting control options. Also, there are many lumen packages to choose from (up to 20,000 lm) with different combinations between the number of LEDs and the power of the driver. This provides the flexibility to meet virtually any outdoor lighting requirement by selecting the mix of energy savings, lifespan, light output and life-cycle cost best suited to your project.

### Thermal Efficiency

The luminaire's innovative design includes electronic components located in the fitter. As a result, the driver and optional lighting controls are situated away from heat generated by the LEDs, ensuring improved thermal dissipation and, consequently, maximum system life of all components.

### Flexibility of Connected Lighting

Every MetroScape luminaire is controls-ready and able to accommodate the most advanced technology. Philips offers a range of outdoor lighting control solutions that feature superior flexibility, including real-time monitoring capabilities that help optimize the management of lighting assets. Designed to meet your specific needs, these systems are scalable from a few luminaires in a park to an entire network of luminaires throughout the city.



# Recommended Applications

MetroScape is valued for more than aesthetics. It is a family of cutting-edge LED luminaires engineered to cover a lot of ground by meeting the most demanding lighting requirements of multiple park, path and street lighting projects.

For architects and urban planners, this translates into better light rendering, improved ambience lighting and convenient style matching across post top and pendant applications.

For municipalities and utilities, this results in considerable savings on electricity and relamping costs, providing an exceptional return on investment for heritage-site revitalization projects and other low-energy, sustainable urban developments.



City  
Streets



City  
Centers



Parks  
and  
Recreation



Public  
Areas



Pedestrian  
Areas and  
Bicycle Paths



Campuses



Green  
Projects



MetroScape

# LED pendant



## Showing the way to cost-effective pedestrian and roadway lighting with a retro look

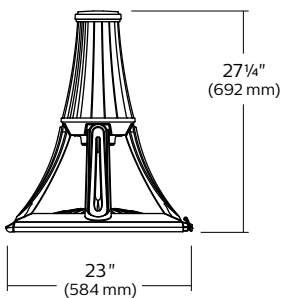
The MetroScape LED pendant luminaire combines style and performance to create flexible, durable and attractive energy-saving solutions that blend in well with traditional-styled urban architecture. Thanks to the open design it is capable of more powerful lumen packages suited to the higher visibility requirements of roads and intersections – up to 96 LEDs can deliver over 20,000 lumens, equivalent to 400W HID. The pendant model comes with a choice of flat or sag lens, and an optional white opaque globe to accentuate the classic design.

MSR

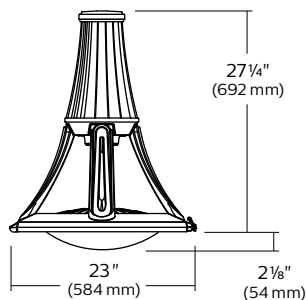
Urban  
.....  
MetroScape  
.....  
Pendant  
.....



### Flat lens



### Sag lens



EPA: 2.32 sq ft  
Weight: 51 lbs (23 kg)

### Key features

- Up to 96 high performance white LEDs
- Can deliver over 20,000 lumens equivalent to 400W HID
- Complete IP66 rated luminaire
- Dedicated LED optics (types 2, 3, 4 & 5)
- Operating lifespan of 100,000 hours. (with L70 lumen maintenance at 25°C)
- Ships standard with dimmable (0-10V) driver



# MetroScape LED post top

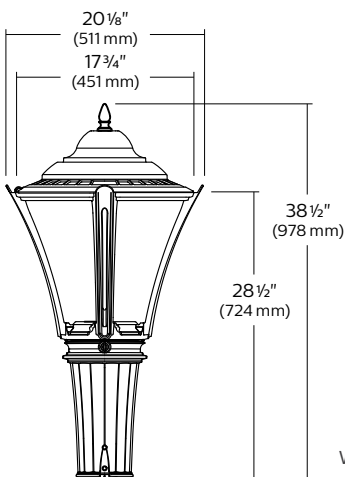
## The height of style and performance for park and pathway lighting

The MetroScape LED post top luminaire features flexible, robust energy-saving solutions for heritage-styled urban architectural lighting. Crowned with an ornamental hood, the post top model comes with a flat lens to highlight the thinness of the LEDs. The luminaire provides attractive lighting at night, adding appeal to the surroundings and promoting safe use of the environment.



MPTR

Urban  
.....  
MetroScape  
.....  
Post Top  
.....



EPA: 1.97 sq ft  
Weight: 31.1 lbs (14.1 kg)

## Key features

- Up to 80 high performance white LEDs
- Many lumen packages available
- Complete IP66 rated luminaire
- Dedicated LED optics (types 2, 3, 4 & 5)
- Operating lifespan of 100,000 hours.  
(with L<sub>70</sub> lumen maintenance at 25°C)
- Ships standard with dimmable  
(0-10V) driver
- Motion Response option available

# Features & Benefits

## Thermal Mastery

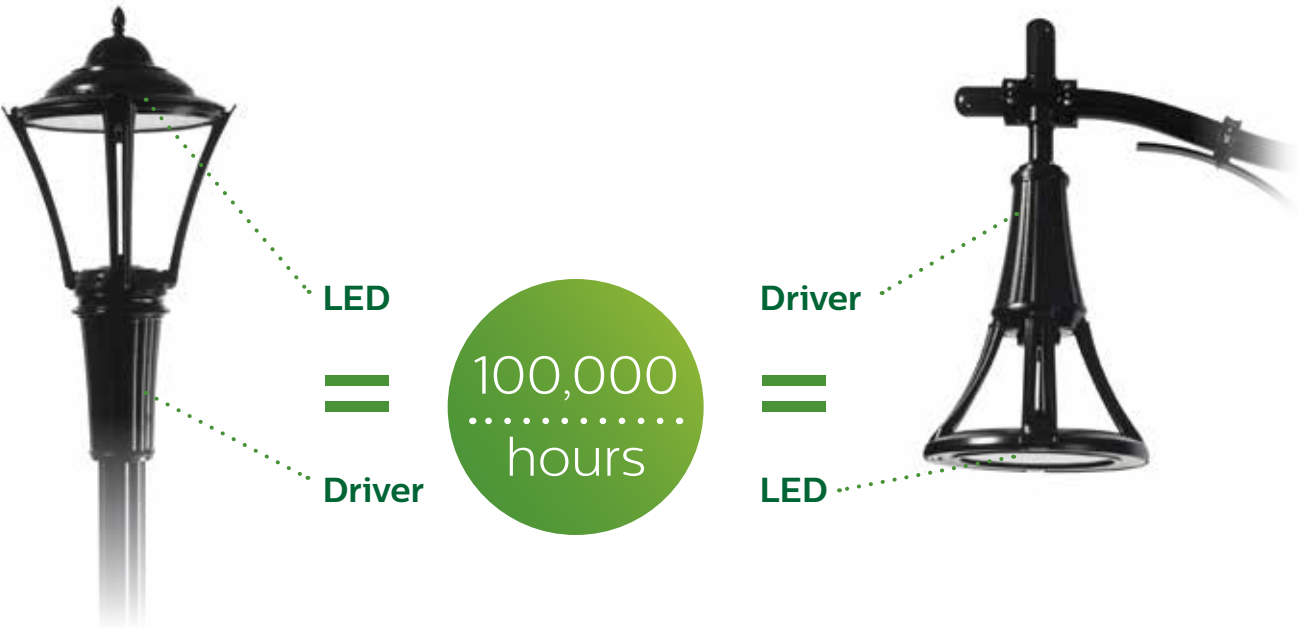
Features	Benefits
LED heat sink made of die cast aluminum	→ Optimizes the LEDs' efficiency and life
Placement of the electronic components in the fitter	→ Reduces degradation of light output over the lifespan Operating lifespan of 100,000 hours L70 at 25°C.
Optimal thermal design	→ Suitable for operation in an ambient temperature up to 40°C / 104°F UL certified (Runs cool in almost every climate).

## Unparalleled performance in thermal management

Because of the high efficiency thermal design, both LEDs and driver achieve 100,000 hours L70 at 25° C.

## Longevity

Our longevity story is more than just using LEDs. During the design phase, industrial designers and engineers made sure that critical components (such as the LED board and the driver) are isolated from each other, located in the fixture to better manage the heat and maximize overall system life.



## Sustainability

Features	Benefits
0% uplight (with flat lens) (full cut-off / U=0 (bug rating))	→ Reduces light pollution, dark sky friendly.
Complete LED luminaire rated IP66	→ Protects the light source and electrical components from degradation caused by environmental pollutants such as rain, ice, snow, dust, sand, etc. → Improved lifetime.
Energy efficient luminaire	→ Uses less energy compared to HID luminaires. → The Philips Xitanium driver offers market leading power management and longevity due to superior heat management.
Made of sustainable materials (93% of the product can be recycled)	→ Projects a green image that pleases citizens and investors.
Eco-designed	→ Can be taken apart upon end-of-life for recycling.

## Photometry

Features	Benefits
Flat lens of the luminaire	→ 0% uplight (full cut-off / U=0 (bug rating)).
Optical system composed of high performance refractor lenses	→ Spacing up to 7 x mounting height (depending on the luminaire version chosen and your application). → Optimizes target lumens for superior lighting uniformity and intensity.
Dedicated LED optics / types 2, 3, 4 & 5	→ Provides high quality, uniform light distribution. → Better control on light trespass.

## LEDs

MetroScape's light engine uses the latest LED technology to answer the needs of the most demanding projects and industry standards. LEDs deliver a high color rendering index (CRI) and exceptional lumen output at an optimal color temperature required by municipalities and various type of applications.



# Advanced Outdoor Lighting Solutions

## Control ready solutions

Features	Benefits
Ships standard with 0-10V driver	→ Dimming compatible.
Optional 5-pin or 7-pin receptacle for dimming	→ Control ready for future proofing. → Compatible with dimming control as per ANSI C136.41.

## Luminaire solutions

Features	Benefits
Dynadimmer control ready	→ Schedules and dimming optimized for safety and economy. → Pre-programmed scenarios make the Dynadimmer a simple solution.
Motion Response option available with post top version	→ Ensure maximum light level when needed without compromising savings. → Efficient sensing with wide angle coverage and adjustable aiming.
Constant light output	→ Management of light output to maintain lighting uniformity and intensity.

## Site solutions

Different options are available according to your needs. Please contact us for more information.

## City solutions

Features	Benefits
CityTouch	→ Gives you the power to make the lighting in your city dynamic, intelligent and totally flexible. → Makes planning, analyzing and managing your lighting infrastructure very simple. → Dimming capability through industry standard twist lock receptacle.

## Service tag



### Making LED maintenance operations easier and faster

MetroScape LED luminaires come standard with Philips Service tag, a unique QR based identification system placed on products, poles and boxes they are delivered in. After installing the luminaire, simply scan the tag from the app to register the product. By registering the product, you are sure Philips will provide support throughout the lifetime of the product.

- Provides easy access to lighting component information at the right time and place.
- Enables more effective maintenance operations by identifying spare parts

[www.philips.com/servicetag](http://www.philips.com/servicetag)

## LED Lifespan

### Control ready solutions

Features	Benefits
Philips LEDgine platform	→ Reduced maintenance costs, lower electrical bills, superior photometric performance, reduces light trespass and uplight.
Up to 80 high performance white LEDs (96 in the pendant version only)	→ Creates ambience and makes architecture look more authentic. → Ensures maximum reliability and safety for drivers and citizens
The LEDgine comes with different driver possibilities and different LED boards	→ Optimized scenarios offering superior longevity and energy savings or maximum lumen output.
Available in standard warm and neutral white 3000K and 4000K, 70 CRI	→ Produces improved color rendering vs. HID for greater perception. → Creates different lighting ambiances.

# Post top

## Luminaire ordering guide

Example: MPTR-55W32LED4K-T-LE3-120-CDMGM25-PH8-BKTX

Series	LED Module	CCT	Gen.	Optics	Voltage	Driver	Luminaire option	Mounting	Pole	Finish
<b>MPTR</b>			<b>G2</b>							
<b>MPTR</b> MetroScape LED post top luminaire	<b>35W32LED3K</b> <b>55W32LED3K</b> <b>72W32LED3K</b> <b>97W32LED3K</b> <b>55W48LED3K</b> <b>80W48LED3K</b> <b>108W48LED3K</b> <b>140W48LED3K</b> <b>70W64LED3K</b> <b>110W64LED3K</b> <b>90W80LED3K</b> <b>135W80LED3K</b>	<b>3K</b> 3000K  <b>4K</b> 4000K	<b>G2</b> Gen 2	<b>LE2</b> Type II (ASYM) flat lens  <b>LE3</b> Type III (ASYM) flat lens  <b>LE3W</b> Type III (ASYM) wide flat lens  <b>LE4</b> Type IV (ASYM) flat lens  <b>LE5</b> Type V (SYMM) flat lens	<b>120</b> 120V  <b>208</b> 208V  <b>240</b> 240V  <b>277</b> 277V  <b>347</b> 347V  <b>480</b> 480V	<b>CDMG</b> Dynadimmer for standard dimming  <b>CLO</b> Pre-set driver to manage lumen depreciation  <b>AST</b> Pre-set driver for progressive start-up  <b>OTL</b> Pre-set driver to signal end of life of the lamp  <b>DALI</b> Pre-set driver compatible with the DALI control system  <b>DMG</b> 0-10 volt	<b>HS</b> House Side Shield  <b>OVR</b> Dynadimmer override function  <b>PH8</b> Photoelectric cell  <b>PH9</b> Shorting Cap  <b>PHXL</b> Photoelectric cell, extended life  <b>RCD</b> 5-Pin receptacle for dimming photoelectric cell  <b>RCD7</b> 7-Pin receptacle for photoelectric cell  <b>TN3</b> Fitter to fit over a 3" (76 mm) O.D. by 4" (102 mm) long tenon  <b>TN3.5</b> Fitter to fit over a 3½" (89 mm) O.D. by 4" (102 mm) long tenon	Consult the Philips web site for details and the complete line of Mountings	Consult the Philips web site for details and the complete line of Poles	<b>BE2TX</b> <b>BE6TX</b> <b>BE8TX</b> <b>BG2TX</b> <b>BKTX</b> <b>BRTX</b> <b>GN4TX</b> <b>GN6TX</b> <b>GN8TX</b> <b>GNTX</b> <b>GR</b> <b>GY3TX</b> <b>NP</b> <b>RD2TX</b> <b>RD4TX</b> <b>TG</b> <b>TS</b> <b>WHTX</b>

# Pendant

## Luminaire ordering guide

Example: MSR-145W64LED4K-T-LE3F-120-CDMGM25-SMA-RCD-BKTX

Series	Lamp	CCT	Gen.	Optics	Lens	Voltage	Driver	Adapter	Luminaire opt	Mounting	Pole	Finish
<b>MSR</b>			<b>G2</b>									
<b>MSR</b> MetroScape LED pendant luminaire	<b>35W32LED</b> <b>55W32LED</b> <b>72W32LED</b> <b>97W32LED</b> <b>55W48LED</b> <b>80W48LED</b> <b>108W48LED</b> <b>140W48LED</b> <b>70W64LED</b> <b>110W64LED</b> <b>145W64LED</b> <b>195W64LED</b> <b>90W80LED</b> <b>135W80LED</b> <b>180W80LED</b> <b>110W96LED</b> <b>160W96LED</b> <b>215W96LED</b>	<b>3K</b> 3000K  <b>4K</b> 4000K	<b>G2</b> Gen 2	<b>LE2</b> Type II (ASYM)  <b>LE3</b> Type III (ASYM)  <b>LE3W</b> Type III (ASYM) wide flat lens  <b>LE4</b> Type IV (ASYM)  <b>LE5<sup>+</sup></b> Type V (SYMM)	<b>F</b> Flat lens  <b>S</b> Sag lens	<b>120</b> 120V  <b>208</b> 208V  <b>240</b> 240V  <b>277</b> 277V  <b>347</b> 347V  <b>480</b> 480V	<b>CDMG</b> Dynadimmer for standard dimming  <b>CLO</b> Pre-set driver to manage lumen depreciation  <b>AST</b> Pre-set driver for progressive start-up  <b>OTL</b> Pre-set driver to signal end of lamp life  <b>DALI</b> Pre-set driver compatible with the DALI control system  <b>DMG</b> 0-10 volt	<b>MA1</b> 1¼" NPT threaded hole adapter accepting threaded tube  <b>MA2</b> 1½" NPT threaded hole adapter accepting threaded tube.  <b>SMA</b> Decorative retro side-mounted cast-aluminum, accepts tubes from 1½/8" to 2 3/8"  <b>SMB</b> Decorative contemporary side-mounted cast-aluminum, accepts tubes from 1½/8" to 2 3/8"	<b>BX</b> Bird repellent  <b>DH</b> Opaque decorative hood  <b>HS</b> House Side Shield  <b>PH8</b> Photoelectric cell  <b>PH9</b> Shorting Cap  <b>PHXL</b> Photoelectric cell, extended life  <b>RCD</b> 5-Pin receptacle for dimming photoelectric cell  <b>RCD7</b> 7-Pin receptacle for photoelectric cell  <b>SP2</b> 20kV/20kA Surge Protector (optional)	Consult the Philips web site for details and the complete line of Mountings	Consult the Philips web site for details and the complete line of Poles	<b>BE2TX</b> <b>BE6TX</b> <b>BE8TX</b> <b>BG2TX</b> <b>BKTX</b> <b>BRTX</b> <b>GN4TX</b> <b>GN6TX</b> <b>GN8TX</b> <b>GNTX</b> <b>GR</b> <b>GY3TX</b> <b>NP</b> <b>RD2TX</b> <b>RD4TX</b> <b>TG</b> <b>TS</b> <b>WHTX</b>



## Luminaire options

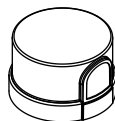
### Pendant and Post top



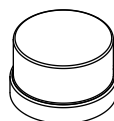
**RCD** 5-Pin receptacle for dimming photoelectric cell



**RCD7** 7-Pin receptacle for dimming photoelectric cell



**PH8** Photoelectric cell



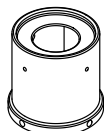
**PH9** Shorting Cap



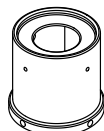
**HS** House Side Shield

**PHXL** Photoelectric cell, extended life

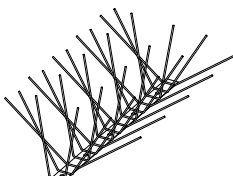
### Pendant Only



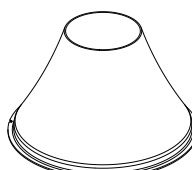
**TN3** Fitter to fit over a 3" (76 mm) O.D. by 4" (102 mm) long tenon



**TN3.5** Fitter to fit over a 3 1/2" (89 mm) O.D. by 4" (102 mm) long tenon



**BX** Bird repellent



**DH** Opaque decorative hood

**OVR** Dynadimmer override function

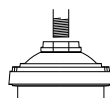
## Driver options

### Pendant and Post top

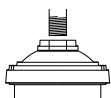
- CDMG** Dynadimmer for standard dimming
- CLO** Pre-set driver to manage lumen depreciation
- AST** Pre-set driver for progressive start-up
- OTL** Pre-set driver to signal end of life of the lamp
- DMG** 0-10 volt

## Adapters

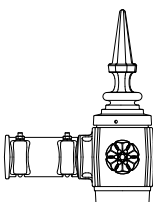
### Pendant Only



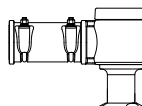
**MA1** 1 1/4" NPT threaded hole adapter accepting a threaded tube.



**MA2** 1 1/2" NPT threaded hole adapter accepting a threaded tube.



**SMA** Decorative retro side-mounted cast-aluminum, accepts tubes from 1 5/8" to 2 3/8"

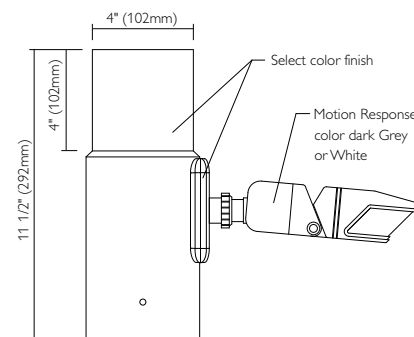


**SMB** Decorative contemporary side-mounted cast-aluminum, accepts tubes from 1 5/8" to 2 3/8"

## Luminaire options

### Post top Only

**Motion Response:** Tenon mount motion response provides 270° coverage on an adjustable knuckle. The coverage equals to up to 6 times the sensor height. It is an option offered jointly with the Dynadimmer OVR option, that can bring the light up to 100% when the motion response is triggered. It is available in a single or double mounting option. The tenon mount is fully rotatable 360°.



## Meet the most demanding street lighting requirements

See how **Philips MetroScape LED** luminaires provide attractive lighting at night, add classic elegance to the surroundings and promote safe use of the environment.

Visit [philips.com/luminaires](http://philips.com/luminaires) for more information.

*Prior to ordering, consult specification sheets for the most current information, notes, and exclusions.*



© 2018 Philips Lighting Holding B.V. All rights reserved. Philips reserves the right to make changes in specifications and/or to discontinue any product at any time without notice or obligation and will not be liable for any consequences resulting from the use of this publication.

PLu-1707BR 01/18 [philips.com/luminaires](http://philips.com/luminaires)

Philips Lighting  
North America Corporation  
200 Franklin Square Drive  
Somerset, NJ 08873  
Tel. 855-486-2216

Philips Lighting Canada Ltd.  
281 Hillmount Rd.  
Markham, ON,  
Canada L6C 2S3  
Tel. 800-668-9008