

Ordering Information

Explanation of Catalog Number. Example: FH4C5DXX6321SMLE

FH	4	C	5	D	XX	6	32	1	SML	E
Series	Fixture Length	Reflector Type	Width	Type	Lens/ Shielding	Lamp quantity in a luminaire cross-section	Lamp/Type	Voltage		Options
FH TriLyte Series	4 = 4' (6-lamp)	C Contoured specular reflector	5 = 23"	D Downlight	XX No shielding X3 3' cord and 15 amp twist lock plug X6 6' cord and 15 amp twist lock plug C6 6' cord only	6 = 6-lamp	32 = 32W T8 54 = 54W T5HO	1 120 2 277 3 347 U 120/277V		E 1-lamp emergency pack for T5HO (Bodine LP600) O 1-lamp emergency pack for T8 (Bodine B100-CAN)
									SML Smart Lighting (Philips Alto® or Alto II™ 841 lamps, Philips Advance elect. P.S. ballast and LampMaximizer™ sensor.) Bulk Pack.	

Features

- Complete system integrating motion sensor and Philips lamps, ballast, and lighting fixture
- **Lamps** Low Mercury Philips Alto II™ T8 lamps (Philips F32T8/TL841/ALTO II, 4100K, 2850 initial lumens) or Alto® T5HO lamps (Philips F54T5/841/HO/ALTO, 4100K, 5000 initial lumens) showing 95% lumen maintenance and reduced lamp-end blackening. For other lamp colour temperatures, consult your sales representative.
- 4-lamp models (Narrow-body) – Available in 4' and 8' lengths
- 6-lamp models (Wide-body) – Available in 4' length only
- **Sensor** LampMaximizer™ optimizes lamp life and energy costs while reducing maintenance costs. Circular detection with passive infrared for 30-40 ft diameter coverage. Green LED on the sensor will blink constantly for 31 days once 70% of the projected lamp life has been reached.
- **Ballast** Philips Advance programmed start electronic ballast. Total Harmonic Distortion of <10%.
- Rated for ballast case temperature up to 90°C. Tested to operate at ambient temperatures of 55°C (6-lamp version without lens). For lens applications, consult your Canlyte representative.
- **Guarantee** 3-year guarantee on all components including lamps, ballasts, sensor and any other component installed on the product by the factory. Properly installed product that Canlyte determines to be defective will be repaired or replaced at Canlyte's discretion. (The warranty covers the repair or replacement of the product and does not extend to transportation, installation or replacement charges. No other warranty, either expressed or implied, beyond this statement is included. Consult your Canlyte representative for further information.)

- **Body** One-piece post-painted housing providing clean, smooth, installation-friendly corners.
- **Reflector** Contoured Miro IV reflector offers optimum performance and 95% reflectivity.
- **Mounting** Choice of stem, surface or chain mounting. 12' to 45' mounting height with suitable lamp-reflector-lens mix.
- **Bulk Pack** Sold in bulk pack only.

Job Information

Type:

Job Name:

Cat. No.:

Lamp(s):

Notes:

CFI Fluorescent

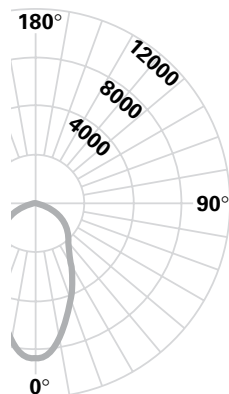
525 Education Road, Cornwall, Ontario K6H 6C7 • (613) 938-6221 • Fax (613) 938-0961
We reserve the right to change details of design, materials and finish.
© 2009 Philips Group • FH4C5DXX654USML.pdf

Canlyte

3015 Louis-Amos, Lachine, Québec H8T 1C4 • (514) 636-0670 • (514) 636-0460

www.canlyte.com

CANDLEPOWER CURVE UNV



REPORT NO: LSC A459
CAT. NO: FH4C5DXX654USML
6 54W T5HO lamp rated at 4400 lumens.
Efficiency: 90.0%
Candela at Nadir: 11149cd

CANDLEPOWER

ZONE DEG	ALONG	22.5	45	67.5	ACROSS
0	11149	11149	11149	11149	11149
5	11116	11125	11081	11061	11047
10	10977	10968	10998	11081	11128
15	10694	10740	10940	11023	10989
20	10333	10443	10694	10027	9678
25	9900	10073	9810	8386	7953
30	9325	9626	8272	6844	6463
35	8695	8995	6816	5672	5517
40	7963	7994	5507	4876	4736
45	7192	6697	4580	4159	4116
50	6305	5329	3784	3573	3339
55	5406	4057	3149	2877	2935
60	4465	2997	2412	2590	2708
65	3492	2192	2005	2290	2291
70	2548	1552	1742	1708	1702
75	1609	995	1179	1075	1031
80	781	630	570	399	322
85	117	145	28	7	0
90	0	0	0	0	0

COEFFICIENTS OF UTILIZATION

ZONAL CAVITY METHOD * EFFECTIVE FLOOR CAVITY REFLECTANCE = .20

Room Cavity Ratio	80				70				50			
	Wall Reflectance				Wall Reflectance				Wall Reflectance			
	70	50	30	10	70	50	30	10	50	30	10	10
0	1.07	1.07	1.07	1.07	1.05	1.05	1.05	1.05	1.00	1.00	1.00	
1	1.00	.96	.93	.90	.97	.94	.91	.89	.90	.88	.86	
2	.92	.86	.81	.76	.90	.84	.79	.75	.81	.77	.74	
3	.85	.77	.71	.66	.83	.75	.70	.65	.73	.68	.64	
4	.79	.69	.62	.57	.77	.68	.62	.56	.66	.60	.56	
5	.72	.62	.55	.49	.70	.61	.54	.49	.59	.53	.48	
6	.67	.56	.49	.44	.65	.55	.48	.43	.54	.48	.43	
7	.62	.51	.44	.39	.61	.50	.43	.38	.49	.42	.38	
8	.58	.46	.39	.34	.56	.45	.39	.34	.44	.38	.34	
9	.53	.42	.35	.30	.52	.41	.34	.30	.40	.34	.30	
10	.49	.38	.31	.27	.49	.38	.31	.26	.37	.31	.26	

DETERMINED IN ACCORDANCE WITH CURRENT IES PUBLISHED PROCEDURES
LUMINAIRE INPUT WATTS = 358.0

DISTRIBUTION

ZONE	LUMENS	% LAMP	% LUMINAIRE
0-30	8366	31.69	35.20
0-40	12823	48.57	53.96
0-60	20088	76.09	84.53
0-90	23765	90.02	100.00
40-90	10941	41.45	46.04
60-90	3677	13.93	15.47
90-180	0	.00	.00
0-180	23765	90.02	100.00

Options/Accessories

Wireguard/Lens See besides.

Internal Fusing Suffix **F**.

Emergency Battery Pack Suffix **O** (T8), **E** (T5HO).

Electrical/Wiring Options Consult your Canlyte representative.

Stem and Canopy Sets 4 stems per luminaire.

Order cat. number **STKF12** (12"), **STKF18** (18"),

STKF24 (24"), **STKF36** (36"), **STKF48** (48").

Chain Hanger Kit 2 kits per luminaire.

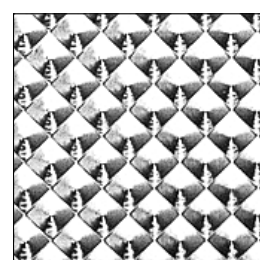
Order cat. number **EE9HC**.



White hinged 9-gauge wireguard adding rigidity to luminaire available as an accessory. (FH4WG4 for narrow luminaire and FH4WG5 for wide luminaire. Add -VA or -VB for a wire guard with lens.)



XX: Version without lens shielding.



VA: Pattern 12 prismatic lens made of virgin acrylic (.095" nominal). Complete with hinged white wireguard.

VB: Pattern 12 prismatic lens made of virgin acrylic (.125" nominal). Complete with hinged white wireguard.

Job Information

Type:

CFI Fluorescent

525 Education Road, Cornwall, Ontario K6H 6C7 • (613) 938-6221 • Fax (613) 938-0961

We reserve the right to change details of design, materials and finish.

© 2009 Philips Group • **FH4C5DXX654USML.pdf**

Canlyte

3015 Louis-Amos, Lachine, Québec H8T 1C4 • (514) 636-0670 • (514) 636-0460

www.canlyte.com