

READ AND UNDERSTAND THESE INSTRUCTIONS BEFORE INSTALLING FIXTURE

This fixture is intended for installation in accordance with the National Electrical Code and local regulations. To assure full compliance with local codes and regulations, check with your local electrical inspector before installation. To prevent electrical shock, turn off electricity at fuse box before proceeding.

Retain these instructions for maintenance reference.

INSTRUCTION SHEET NO.

IS:9151

A0497

Page 1 of 2

RADIUS® "T" CONNECTOR FOR USE WITH 9100 SERIES, RADIUS® TRACK SYSTEMS ONLY

- TURN OFF POWER AT FUSE BOX BEFORE INSTALLING "T" CONNECTOR AND TRACK.
- DO NOT USE "T" CONNECTOR AS A CONDUIT SUPPORT. INDEPENDENT CONDUIT SUPPORTS (SUCH AS CONDUIT STRAPS) MUST BE USED TO ATTACH THE CONDUIT INSTALLATION TO THE BUILDING STRUCTURE.
- OBSERVE POLARITY, WHITE NEUTRAL WIRE MUST BE CONNECTED TO THE TERMINAL ADJACENT TO THE BEAD ON THE TRACK.
- USE SOLID 12 GA COPPER WIRE IN "T" CONNECTOR ONLY.

I. INSTALLING "T" CONNECTOR INTO TRACK

1. Insert LEG(S) of CONNECTOR into track. Ensure that CONTACT BLADES insert into GAP of the TRACK COPPER CONDUCTOR.
2. Tighten LOCKING SCREWS.

DIRECT POWER FEED FROM ABOVE CEILING

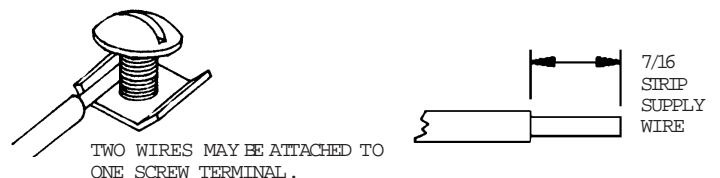
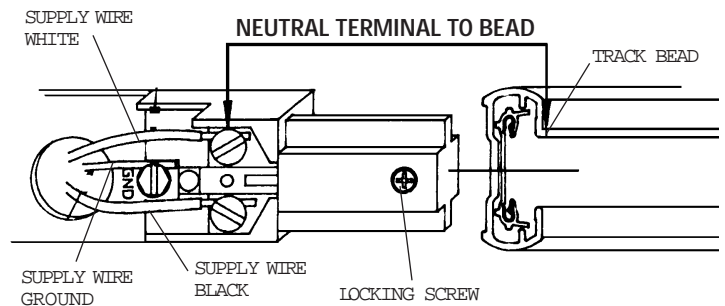
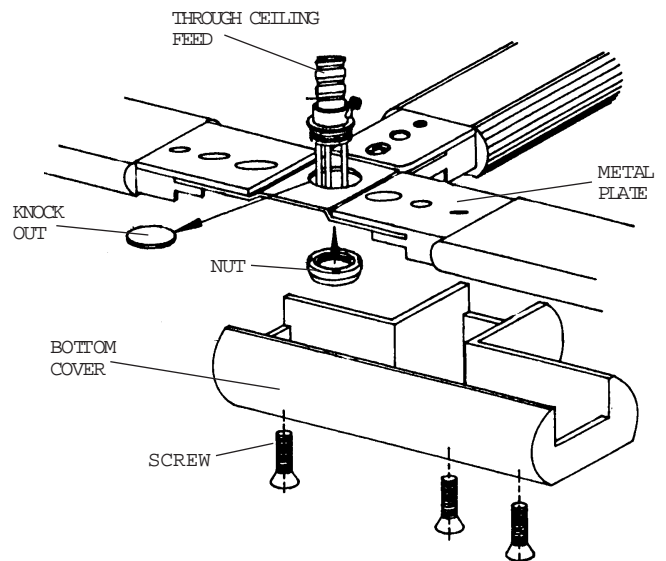
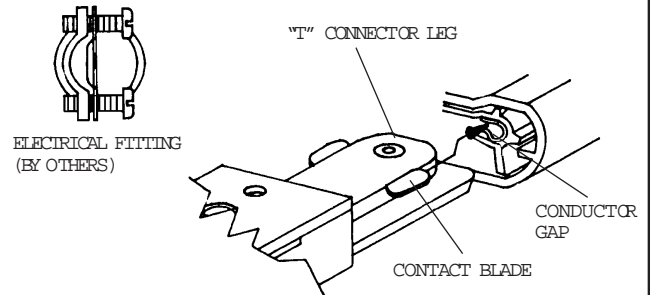
1. Remove BOTTOM COVER by removing SCREWS.
2. Remove KNOCK OUT from METAL PLATE.
3. Secure ELECTRICAL FITTING to METAL PLATE using the NUT provided.

Note: Special care must be taken when making the hole in the MOUNTING SURFACE to prevent the hole from being visible after the track is mounted. If a ROMEX CONNECTOR is being used, the SCREWS on the CONNECTOR may have to be cut to conceal the MOUNTING HOLE.

4. Pass SUPPLY LEADS through ELECTRICAL FITTING and secure CONDUIT to ELECTRICAL FITTING.
5. Strip and form SUPPLY LEADS to fit into "T" CONNECTOR. Fasten SUPPLY LEADS to SCREW TERMINALS, WHITE LEAD to TERMINAL adjacent to the TRACK BEAD, GROUND LEAD to TERMINAL marked "GND", BLACK LEAD to TERMINAL opposite WHITE LEAD.

Note: This CONNECTOR is not polarized. The installer is responsible for the proper polarity of the circuits. The NEUTRAL WHITE WIRES must always be connected to the SCREW TERMINALS adjacent to the TRACK BEADS.

6. Fasten BOTTOM COVER to the "T" CONNECTOR using SCREWS provided.



LIGHTOLIER®

FALL RIVER, MASSACHUSETTS 02720
MONTREAL, QUEBEC, CANADA

READ AND UNDERSTAND THESE INSTRUCTIONS BEFORE INSTALLING FIXTURE

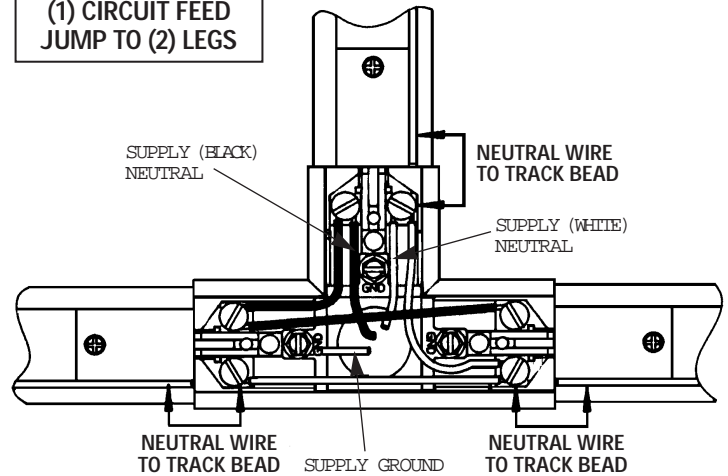
This fixture is intended for installation in accordance with the National Electrical Code and local regulations. To assure full compliance with local codes and regulations, check with your local electrical inspector before installation. To prevent electrical shock, turn off electricity at fuse box before proceeding.

Retain these instructions for maintenance reference.

POWER FEED FROM STEM KIT

1. Remove BOTTOM COVER by removing SCREWS.
2. Remove the KNOCK OUT from the TOP METAL PLATE. See Instruction Sheet IS:9187. Wire cover (sold separately) required when feeding from stem.
3. Pass SUPPLY LEADS through KNOCK OUT HOLE.
4. Follow instructions 5 and 6 on Page 1.

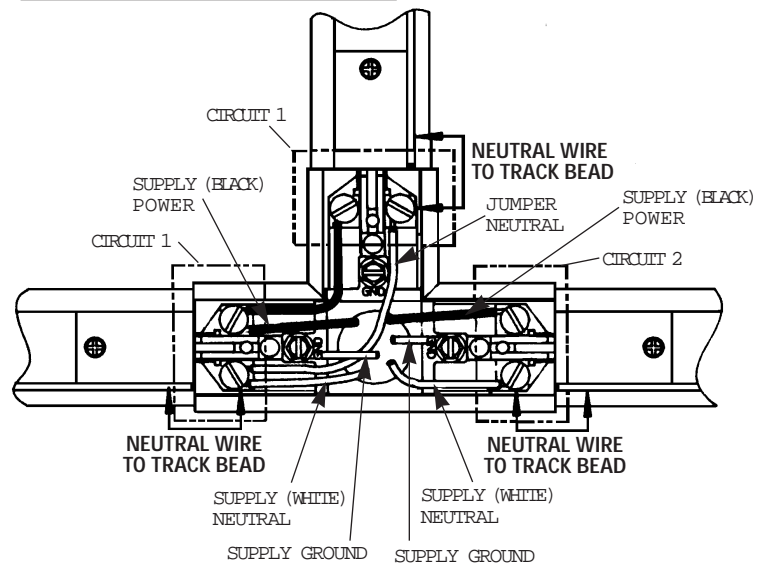
**(1) CIRCUIT FEED
JUMP TO (2) LEGS**



**SAMPLES OF TYPICAL
WIRING CONFIGURATIONS**

NOTE: This CONNECTOR is not polarized. The installer is responsible for the proper polarity of the circuits. The NEUTRAL WHITE WIRES must always be connected to the SCREW TERMINALS adjacent to the TRACK BEADS.

**(2) SEPARATE FEED CIRCUITS
JUMP (1) CIRCUIT TO (1) LEG**



**(1) CIRCUIT FEED
JUMP TO (1) LEG**

