



Maxos LED Industry – innovative, flexible solution delivers ideal light output

Maxos LED

Customers in the industrial and retail sectors are looking for general lighting solutions with a justifiable payback, while meeting all relevant norms for supermarkets and industry applications. For a limited investment, Maxos LED Industry offers best-in-class energy savings while delivering high lux levels at the required color temperatures and glare factors. The minimalistic Maxos LED Industry system comprises exchangeable mid-power LED boards mounted on a standard Maxos trunking rail. A choice of wide and medium-beam lenses means flexibility in light distribution. Compared with a conventional fluorescent installation, this highly efficient LED solution offers full payback in less than three years. And the benefits keep coming: the use of our upgradable LED engine platform makes Maxos LED Industry a truly future-proof solution.

Benefits

- Substantial energy savings for a limited investment
- Comfortable light, long lifetime
- Compatibility with proven Maxos trunking system

Maxos LED

Features

- Mid-power LED boards; exchangeable LED unit
- Up to 138 lm/W efficiency
- LED gear trays for T5 and TL-D-length trunkings (high lumen output); replacement LED gear trays with same lumen packages as installed T5 and TL-D solutions (lower wattage)
- Choice of narrow, medium, double asymmetric and asymmetric lenses
- Compatible with our standard Maxos and TTX400 rails for TL5 49 W and TL-D 58 W lengths

Application

- Industry
- Warehouses
- Supermarkets, DIY stores, electronics retailers
- Showrooms

Specifications

Type	4MX850	Performance Ambient Temperature Tq	+25 °C
Light source	Philips Fortimo LEDline 3R	Operating temperature range	-20 to +35 °C
Power	25 W (4000 lm, 4000 K) 33 W (5500 lm, 4000 K) 41 W (6600 lm, 4000 K) 53 W (8000 lm, 4000 K)	Driver	Titanium, easy to replace
Beam angle	2 x 50° (wide beam) 2 x 25° (narrow beam) A20° (asymmetric) DA20° (double asymmetric) 2 x DA35° (double asymmetric)	Power/Data supply	75 Watt (max power), programmable
Luminous flux	Up to 6600 lumen	Mains voltage	220-240 V / 50-60 Hz
Correlated Color Temperature	3000, 4000 or 5000 K	Dimming	DALI dimmable and fixed output versions
Color Rendering Index	> 80	Options	Emergency lighting: central (EL) or with battery (EL3)
Lumen maintenance at median useful life* 50000 h	L80	Material	Gear tray: sheet metal Lens plate: PMMA
Control gear failure rate 5% at median useful life 50000 h		Color	White (WH) and silver (SI)
		Connection	Electrical contact via standard Maxos through-wiring connector
		Maintenance	Via clicking out the gear unit from the rail
		Installation	Fixation of the 4MX850 unit on the Maxos trunking with springs Suspended or surface (ceiling) mounted
		Remarks	No exchange of bare LED engines, only the complete 4MX850 unit (1.5 m in length)

Maxos LED

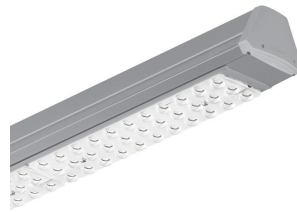
Versions



Maxos LED Industry 4MX850
electrical unit



Maxos Led Industry - Generation 4
- 1 unit for TL5 49 W - LED
Module, system flux 6600 lm -
840 neutral white - Power supply
unit with DALI interface and
constant light output - Wide beam
- Constant light output -
Connection unit 5-pole - White



Product details

Top view of insert



Close-up view from below



Partial side view



Application Conditions

Ambient temperature range	-20 to +35 °C
Maximum dim level	1%
Suitable for random switching	Not applicable

Approval and Application

Mech. impact protection code	IK02
Ingress protection code	IP20

Controls and Dimming

Dimmable	Yes
----------	-----

Operating and Electrical

Input Voltage	220-240 V
---------------	-----------

General Information

Beam angle of light source	120 °
Cap-Base	-
CE mark	CE mark
Protection class IEC	Safety class I (I)
Optical cover/lens type	PM
Driver included	Yes
ENEC mark	ENEC mark
Flammability mark	D
Gear	-
Glow-wire test	650/30
Light source replaceable	No
Number of gear units	1 unit
Number of light sources	1
UL mark	-

Initial Performance (IEC Compliant)

Init. Color Rendering Index	≥80
Luminous flux tolerance	+/-10%

General Information

Order Code	Full Product Name	Emergency lighting	Lamp family code	Optic type	Product Family Code
87641199	4MX850 581 LED80S/840 PSD NB WH	-	LED80S	NB	4MX850
87643599	4MX850 581 LED80S/840 PSD WB WH	-	LED80S	WB	4MX850
66121399	4MX850 581 LED55S/830 PSD NB WH	-	LED55S	NB	4MX850
66122099	4MX850 581 LED55S/840 PSD NB WH	-	LED55S	NB	4MX850
66123799	4MX850 581 LED55S/830 PSD WB WH	-	LED55S	WB	4MX850
66124499	4MX850 581 LED55S/840 PSD WB WH	-	LED55S	WB	4MX850
66169599	4MX850 581 LED40S/830 PSD NB WH	-	LED40S	NB	4MX850
66170199	4MX850 581 LED40S/840 PSD NB WH	-	LED40S	NB	4MX850
66179499	4MX850 581 LED40S/830 PSD WB WH	-	LED40S	WB	4MX850
66171899	4MX850 581 LED40S/840 PSD WB WH	-	LED40S	WB	4MX850
66263099	4MX850 581 LED55S/830 PSD DA20 WH	-	LED55S	DA20	4MX850
66264799	4MX850 581 LED55S/840 PSD DA20 WH	-	LED55S	DA20	4MX850
66271599	4MX850 581 LED40S/830 PSD DA20 WH	-	LED40S	DA20	4MX850
66272299	4MX850 581 LED40S/840 PSD DA20 WH	-	LED40S	DA20	4MX850
66695999	4MX850 581 LED66S/840 PSD WB WH	-	LED66S	WB	4MX850
66696699	4MX850 581 LED66S/840 PSD NB WH	-	LED66S	NB	4MX850
66117699	4MX850 491 LED55S/830 PSD NB WH	-	LED55S	NB	4MX850
66118399	4MX850 491 LED55S/840 PSD NB WH	-	LED55S	NB	4MX850
66119099	4MX850 491 LED55S/830 PSD WB WH	-	LED55S	WB	4MX850
66120699	4MX850 491 LED55S/840 PSD WB WH	-	LED55S	WB	4MX850
66166499	4MX850 491 LED40S/840 PSD NB WH	-	LED40S	NB	4MX850
66167199	4MX850 491 LED40S/830 PSD WB WH	-	LED40S	WB	4MX850
66168899	4MX850 491 LED40S/840 PSD WB WH	-	LED40S	WB	4MX850
66262399	4MX850 491 LED55S/840 PSD DA20 WH	-	LED55S	DA20	4MX850
66269299	4MX850 491 LED40S/830 PSD DA20 WH	-	LED40S	DA20	4MX850
66270899	4MX850 491 LED40S/840 PSD DA20 WH	-	LED40S	DA20	4MX850
66601099	4MX850 491 LED66S/840 PSD DA20 WH	-	LED66S	DA20	4MX850
66602799	4MX850 491 LED66S/840 PSD WB WH	-	LED66S	WB	4MX850
66603499	4MX850 491 LED66S/840 PSD NB WH	-	LED66S	NB	4MX850
66692899	4MX850 491 LED66S/830 PSD DA20 WH	-	LED66S	DA20	4MX850
66693599	4MX850 491 LED66S/830 PSD WB WH	-	LED66S	WB	4MX850
66694299	4MX850 491 LED66S/830 PSD NB WH	-	LED66S	NB	4MX850
66770399	4MX850 491 LED66S/840 PSD A20 WH	-	LED66S	A20	4MX850
67281399	4MX850 491 LED80S/840 PSD NB WH	-	LED80S	NB	4MX850
67282099	4MX850 491 LED80S/840 PSD WB WH	-	LED80S	WB	4MX850
67295099	4MX866 491 LED66S/840 PSD NB WH	EL1	LED66S	NB	4MX866
66125199	4MX850 491 LED55S/830 PSD NB SI	-	LED55S	NB	4MX850
66126899	4MX850 491 LED55S/840 PSD NB SI	-	LED55S	NB	4MX850
66127599	4MX850 491 LED55S/830 PSD WB SI	-	LED55S	WB	4MX850
66128299	4MX850 491 LED55S/840 PSD WB SI	-	LED55S	WB	4MX850
66173299	4MX850 491 LED40S/840 PSD NB SI	-	LED40S	NB	4MX850

Order Code	Full Product Name	Emergency lighting	Lamp family code	Optic type	Product Family Code
66174999	4MX850 491 LED40S/830 PSD WB SI	-	LED40S	WB	4MX850
66175699	4MX850 491 LED40S/840 PSD WB SI	-	LED40S	WB	4MX850
66265499	4MX850 491 LED55S/830 PSD DA20 SI	-	LED55S	DA20	4MX850
66266199	4MX850 491 LED55S/840 PSD DA20 SI	-	LED55S	DA20	4MX850
66273999	4MX850 491 LED40S/830 PSD DA20 SI	-	LED40S	DA20	4MX850
66274699	4MX850 491 LED40S/840 PSD DA20 SI	-	LED40S	DA20	4MX850
66129999	4MX850 581 LED55S/830 PSD NB SI	-	LED55S	NB	4MX850
66130599	4MX850 581 LED55S/840 PSD NB SI	-	LED55S	NB	4MX850
66131299	4MX850 581 LED55S/830 PSD WB SI	-	LED55S	WB	4MX850
66132999	4MX850 581 LED55S/840 PSD WB SI	-	LED55S	WB	4MX850
66176399	4MX850 581 LED40S/830 PSD NB SI	-	LED40S	NB	4MX850
66177099	4MX850 581 LED40S/840 PSD NB SI	-	LED40S	NB	4MX850
66180099	4MX850 581 LED40S/830 PSD WB SI	-	LED40S	WB	4MX850
66178799	4MX850 581 LED40S/840 PSD WB SI	-	LED40S	WB	4MX850
66267899	4MX850 581 LED55S/830 PSD DA20 SI	-	LED55S	DA20	4MX850
66268599	4MX850 581 LED55S/840 PSD DA20 SI	-	LED55S	DA20	4MX850
66275399	4MX850 581 LED40S/830 PSD DA20 SI	-	LED40S	DA20	4MX850
66276099	4MX850 581 LED40S/840 PSD DA20 SI	-	LED40S	DA20	4MX850

Initial Performance (IEC Compliant) (1/2)

Order Code	Full Product Name	Initial chromaticity	Init. Corr. Color Temperature	Initial LED luminaire efficacy	Initial luminous flux	Order Code	Full Product Name	Initial chromaticity	Init. Corr. Color Temperature	Initial LED luminaire efficacy	Initial luminous flux
87641199	4MX850 581 LED80S/840 PSD NB WH	(0.38, 0.38) SDCM <3.5	4000 K	151 lm/W	8000 lm	66171899	4MX850 581 LED40S/840 PSD WB WH	(0.38, 0.38) SDCM <3.5	4000 K	160 lm/W	4000 lm
87643599	4MX850 581 LED80S/840 PSD WB WH	(0.38, 0.38) SDCM <3.5	4000 K	151 lm/W	8000 lm	66263099	4MX850 581 LED55S/830 PSD DA20 WH	(0.43, 0.40) SDCM <3.5	3000 K	157 lm/W	5500 lm
66121399	4MX850 581 LED55S/830 PSD NB WH	(0.43, 0.40) SDCM <3.5	3000 K	157 lm/W	5500 lm	66264799	4MX850 581 LED55S/840 PSD DA20 WH	(0.38, 0.38) SDCM <3.5	4000 K	167 lm/W	5500 lm
66122099	4MX850 581 LED55S/840 PSD NB WH	(0.38, 0.38) SDCM <3.5	4000 K	167 lm/W	5500 lm	66271599	4MX850 581 LED40S/830 PSD DA20 WH	(0.43, 0.40) SDCM <3.5	3000 K	148 lm/W	4000 lm
66123799	4MX850 581 LED55S/830 PSD WB WH	(0.43, 0.40) SDCM <3.5	3000 K	157 lm/W	5500 lm	66272299	4MX850 581 LED40S/840 PSD DA20 WH	(0.38, 0.38) SDCM <3.5	4000 K	160 lm/W	4000 lm
66124499	4MX850 581 LED55S/840 PSD WB WH	(0.38, 0.38) SDCM <3.5	4000 K	167 lm/W	5500 lm	66695999	4MX850 581 LED66S/840 PSD WB WH	(0.38, 0.38) SDCM <3.5	4000 K	161 lm/W	6600 lm
66169599	4MX850 581 LED40S/830 PSD NB WH	(0.43, 0.40) SDCM <3.5	3000 K	148 lm/W	4000 lm	66696699	4MX850 581 LED66S/840 PSD NB WH	(0.38, 0.38) SDCM <3.5	4000 K	161 lm/W	6600 lm
66170199	4MX850 581 LED40S/840 PSD NB WH	(0.38, 0.38) SDCM <3.5	4000 K	160 lm/W	4000 lm	66117699	4MX850 491 LED55S/830 PSD NB WH	(0.43, 0.40) SDCM <3.5	3000 K	157 lm/W	5500 lm
66179499	4MX850 581 LED40S/830 PSD WB WH	(0.43, 0.40) SDCM <3.5	3000 K	148 lm/W	4000 lm	66118399	4MX850 491 LED55S/840 PSD NB WH	(0.38, 0.38) SDCM <3.5	4000 K	167 lm/W	5500 lm

Maxos LED

Order Code	Full Product Name	Initial chromaticity	Init. Corr. Color Temperature	Initial LED luminaire efficacy	Initial luminous flux
66119099	4MX850 491 LED55S/830 PSD WB WH	(0.43, 0.40) SDCM <3.5	3000 K	157 lm/W	5500 lm
66120699	4MX850 491 LED55S/840 PSD WB WH	(0.38, 0.38) SDCM <3.5	4000 K	167 lm/W	5500 lm
66166499	4MX850 491 LED40S/840 PSD NB WH	(0.38, 0.38) SDCM <3.5	4000 K	160 lm/W	4000 lm
66167199	4MX850 491 LED40S/830 PSD WB WH	(0.43, 0.40) SDCM <3.5	3000 K	148 lm/W	4000 lm
66168899	4MX850 491 LED40S/840 PSD WB WH	(0.38, 0.38) SDCM <3.5	4000 K	160 lm/W	4000 lm
66262399	4MX850 491 LED55S/840 PSD DA20 WH	(0.38, 0.38) SDCM <3.5	4000 K	167 lm/W	5500 lm
66269299	4MX850 491 LED40S/830 PSD DA20 WH	(0.43, 0.40) SDCM <3.5	3000 K	148 lm/W	4000 lm
66270899	4MX850 491 LED40S/840 PSD DA20 WH	(0.38, 0.38) SDCM <3.5	4000 K	160 lm/W	4000 lm
66601099	4MX850 491 LED66S/840 PSD DA20 WH	(0.38, 0.38) SDCM <3.5	4000 K	161 lm/W	6600 lm
66602799	4MX850 491 LED66S/840 PSD WB WH	(0.38, 0.38) SDCM <3.5	4000 K	161 lm/W	6600 lm
66603499	4MX850 491 LED66S/840 PSD NB WH	(0.38, 0.38) SDCM <3.5	4000 K	161 lm/W	6600 lm
66692899	4MX850 491 LED66S/830 PSD DA20 WH	(0.43, 0.40) SDCM <3.5	3000 K	161 lm/W	6600 lm
66693599	4MX850 491 LED66S/830 PSD WB WH	(0.43, 0.40) SDCM <3.5	3000 K	161 lm/W	6600 lm
66694299	4MX850 491 LED66S/830 PSD NB WH	(0.43, 0.40) SDCM <3.5	3000 K	161 lm/W	6600 lm
66770399	4MX850 491 LED66S/840 PSD A20 WH	(0.38, 0.38) SDCM <3.5	4000 K	161 lm/W	6600 lm
67281399	4MX850 491 LED80S/840 PSD NB WH	(0.38, 0.38) SDCM <3.5	4000 K	151 lm/W	8000 lm

Order Code	Full Product Name	Initial chromaticity	Init. Corr. Color Temperature	Initial LED luminaire efficacy	Initial luminous flux
67282099	4MX850 491 LED80S/840 PSD WB WH	(0.38, 0.38) SDCM <3.5	4000 K	151 lm/W	8000 lm
67295099	4MX866 491 LED66S/840 PSD NB WH	(0.38, 0.38) SDCM <3.5	4000 K	147 lm/W	6600 lm
66125199	4MX850 491 LED55S/830 PSD NB SI	(0.43, 0.40) SDCM <3.5	3000 K	157 lm/W	5500 lm
66126899	4MX850 491 LED55S/840 PSD NB SI	(0.38, 0.38) SDCM <3.5	4000 K	167 lm/W	5500 lm
66127599	4MX850 491 LED55S/830 PSD WB SI	(0.43, 0.40) SDCM <3.5	3000 K	157 lm/W	5500 lm
66128299	4MX850 491 LED55S/840 PSD WB SI	(0.38, 0.38) SDCM <3.5	4000 K	167 lm/W	5500 lm
66173299	4MX850 491 LED40S/840 PSD NB SI	(0.38, 0.38) SDCM <3.5	4000 K	160 lm/W	4000 lm
66174999	4MX850 491 LED40S/830 PSD WB SI	(0.43, 0.40) SDCM <3.5	3000 K	148 lm/W	4000 lm
66175699	4MX850 491 LED40S/840 PSD WB SI	(0.38, 0.38) SDCM <3.5	4000 K	160 lm/W	4000 lm
66265499	4MX850 491 LED55S/830 PSD DA20 SI	(0.43, 0.40) SDCM <3.5	3000 K	157 lm/W	5500 lm
66266199	4MX850 491 LED55S/840 PSD DA20 SI	(0.38, 0.38) SDCM <3.5	4000 K	167 lm/W	5500 lm
66273999	4MX850 491 LED40S/830 PSD DA20 SI	(0.43, 0.40) SDCM <3.5	3000 K	148 lm/W	4000 lm
66274699	4MX850 491 LED40S/840 PSD DA20 SI	(0.38, 0.38) SDCM <3.5	4000 K	160 lm/W	4000 lm
66129999	4MX850 581 LED55S/830 PSD NB SI	(0.43, 0.40) SDCM <3.5	3000 K	157 lm/W	5500 lm
66130599	4MX850 581 LED55S/840 PSD NB SI	(0.38, 0.38) SDCM <3.5	4000 K	167 lm/W	5500 lm
66131299	4MX850 581 LED55S/830 PSD WB SI	(0.43, 0.40) SDCM <3.5	3000 K	157 lm/W	5500 lm

Maxos LED

Order Code	Full Product Name	Initial chromaticity	Init. Corr. Color Temperature	Initial LED luminaire efficacy	Initial luminous flux
66132999	4MX850 581 LED55S/840 PSD WB SI	(0.38, 0.38) SDCM <3.5	4000 K	167 lm/W	5500 lm
66176399	4MX850 581 LED40S/830 PSD NB SI	(0.43, 0.40) SDCM <3.5	3000 K	148 lm/W	4000 lm
66177099	4MX850 581 LED40S/840 PSD NB SI	(0.38, 0.38) SDCM <3.5	4000 K	160 lm/W	4000 lm
66180099	4MX850 581 LED40S/830 PSD WB SI	(0.43, 0.40) SDCM <3.5	3000 K	148 lm/W	4000 lm
66178799	4MX850 581 LED40S/840 PSD WB SI	(0.38, 0.38) SDCM <3.5	4000 K	160 lm/W	4000 lm

Order Code	Full Product Name	Initial chromaticity	Init. Corr. Color Temperature	Initial LED luminaire efficacy	Initial luminous flux
66267899	4MX850 581 LED55S/830 PSD DA20 SI	(0.43, 0.40) SDCM <3.5	3000 K	157 lm/W	5500 lm
66268599	4MX850 581 LED55S/840 PSD DA20 SI	(0.38, 0.38) SDCM <3.5	4000 K	167 lm/W	5500 lm
66275399	4MX850 581 LED40S/830 PSD DA20 SI	(0.43, 0.40) SDCM <3.5	3000 K	148 lm/W	4000 lm
66276099	4MX850 581 LED40S/840 PSD DA20 SI	(0.38, 0.38) SDCM <3.5	4000 K	160 lm/W	4000 lm

Initial Performance (IEC Compliant) (2/2)

Order Code	Full Product Name	Initial input power
87641199	4MX850 581 LED80S/840 PSD NB WH	53 W
87643599	4MX850 581 LED80S/840 PSD WB WH	53 W
66121399	4MX850 581 LED55S/830 PSD NB WH	35 W
66122099	4MX850 581 LED55S/840 PSD NB WH	33 W
66123799	4MX850 581 LED55S/830 PSD WB WH	35 W
66124499	4MX850 581 LED55S/840 PSD WB WH	33 W
66169599	4MX850 581 LED40S/830 PSD NB WH	27 W
66170199	4MX850 581 LED40S/840 PSD NB WH	25 W
66179499	4MX850 581 LED40S/830 PSD WB WH	27 W
66171899	4MX850 581 LED40S/840 PSD WB WH	25 W
66263099	4MX850 581 LED55S/830 PSD DA20 WH	35 W
66264799	4MX850 581 LED55S/840 PSD DA20 WH	33 W
66271599	4MX850 581 LED40S/830 PSD DA20 WH	27 W
66272299	4MX850 581 LED40S/840 PSD DA20 WH	25 W
66695999	4MX850 581 LED66S/840 PSD WB WH	41 W
66696699	4MX850 581 LED66S/840 PSD NB WH	41 W
66117699	4MX850 491 LED55S/830 PSD NB WH	35 W
66118399	4MX850 491 LED55S/840 PSD NB WH	33 W
66119099	4MX850 491 LED55S/830 PSD WB WH	35 W
66120699	4MX850 491 LED55S/840 PSD WB WH	33 W
66166499	4MX850 491 LED40S/840 PSD NB WH	25 W
66167199	4MX850 491 LED40S/830 PSD WB WH	27 W
66168899	4MX850 491 LED40S/840 PSD WB WH	25 W
66262399	4MX850 491 LED55S/840 PSD DA20 WH	33 W
66269299	4MX850 491 LED40S/830 PSD DA20 WH	27 W
66270899	4MX850 491 LED40S/840 PSD DA20 WH	25 W
66601099	4MX850 491 LED66S/840 PSD DA20 WH	41 W
66602799	4MX850 491 LED66S/840 PSD WB WH	41 W
66603499	4MX850 491 LED66S/840 PSD NB WH	41 W
66692899	4MX850 491 LED66S/830 PSD DA20 WH	44 W

Order Code	Full Product Name	Initial input power
66693599	4MX850 491 LED66S/830 PSD WB WH	44 W
66694299	4MX850 491 LED66S/830 PSD NB WH	44 W
66770399	4MX850 491 LED66S/840 PSD A20 WH	41 W
67281399	4MX850 491 LED80S/840 PSD NB WH	53 W
67282099	4MX850 491 LED80S/840 PSD WB WH	53 W
67295099	4MX866 491 LED66S/840 PSD NB WH	45 W
66125199	4MX850 491 LED55S/830 PSD NB SI	35 W
66126899	4MX850 491 LED55S/840 PSD NB SI	33 W
66127599	4MX850 491 LED55S/830 PSD WB SI	35 W
66128299	4MX850 491 LED55S/840 PSD WB SI	33 W
66173299	4MX850 491 LED40S/840 PSD NB SI	25 W
66174999	4MX850 491 LED40S/830 PSD WB SI	27 W
66175699	4MX850 491 LED40S/840 PSD WB SI	25 W
66265499	4MX850 491 LED55S/830 PSD DA20 SI	35 W
66266199	4MX850 491 LED55S/840 PSD DA20 SI	33 W
66273999	4MX850 491 LED40S/830 PSD DA20 SI	27 W
66274699	4MX850 491 LED40S/840 PSD DA20 SI	25 W
66129999	4MX850 581 LED55S/830 PSD NB SI	35 W
66130599	4MX850 581 LED55S/840 PSD NB SI	33 W
66131299	4MX850 581 LED55S/830 PSD WB SI	35 W
66132999	4MX850 581 LED55S/840 PSD WB SI	33 W
66176399	4MX850 581 LED40S/830 PSD NB SI	27 W
66177099	4MX850 581 LED40S/840 PSD NB SI	25 W
66180099	4MX850 581 LED40S/830 PSD WB SI	27 W
66178799	4MX850 581 LED40S/840 PSD WB SI	25 W
66267899	4MX850 581 LED55S/830 PSD DA20 SI	35 W
66268599	4MX850 581 LED55S/840 PSD DA20 SI	33 W
66275399	4MX850 581 LED40S/830 PSD DA20 SI	27 W
66276099	4MX850 581 LED40S/840 PSD DA20 SI	25 W

Mechanical and Housing

Order Code	Full Product Name	Color	Trunking length	Order Code	Full Product Name	Color	Trunking length
87641199	4MX850 581 LED80S/840 PSD NB WH	White	581	66693599	4MX850 491 LED66S/830 PSD WB WH	White	491
87643599	4MX850 581 LED80S/840 PSD WB WH	White	581	66694299	4MX850 491 LED66S/830 PSD NB WH	White	491
66121399	4MX850 581 LED55S/830 PSD NB WH	White	581	66770399	4MX850 491 LED66S/840 PSD A20 WH	White	491
66122099	4MX850 581 LED55S/840 PSD NB WH	White	581	67281399	4MX850 491 LED80S/840 PSD NB WH	White	491
66123799	4MX850 581 LED55S/830 PSD WB WH	White	581	67282099	4MX850 491 LED80S/840 PSD WB WH	White	491
66124499	4MX850 581 LED55S/840 PSD WB WH	White	581	67295099	4MX866 491 LED66S/840 PSD NB WH	White	491
66169599	4MX850 581 LED40S/830 PSD NB WH	White	581	66125199	4MX850 491 LED55S/830 PSD NB SI	Silver	491
66170199	4MX850 581 LED40S/840 PSD NB WH	White	581	66126899	4MX850 491 LED55S/840 PSD NB SI	Silver	491
66179499	4MX850 581 LED40S/830 PSD WB WH	White	581	66127599	4MX850 491 LED55S/830 PSD WB SI	Silver	491
66171899	4MX850 581 LED40S/840 PSD WB WH	White	581	66128299	4MX850 491 LED55S/840 PSD WB SI	Silver	491
66263099	4MX850 581 LED55S/830 PSD DA20 WH	White	581	66173299	4MX850 491 LED40S/840 PSD NB SI	Silver	491
66264799	4MX850 581 LED55S/840 PSD DA20 WH	White	581	66174999	4MX850 491 LED40S/830 PSD WB SI	Silver	491
66271599	4MX850 581 LED40S/830 PSD DA20 WH	White	581	66175699	4MX850 491 LED40S/840 PSD WB SI	Silver	491
66272299	4MX850 581 LED40S/840 PSD DA20 WH	White	581	66265499	4MX850 491 LED55S/830 PSD DA20 SI	Silver	491
66695999	4MX850 581 LED66S/840 PSD WB WH	White	581	66266199	4MX850 491 LED55S/840 PSD DA20 SI	Silver	491
66696699	4MX850 581 LED66S/840 PSD NB WH	White	581	66273999	4MX850 491 LED40S/830 PSD DA20 SI	Silver	491
66117699	4MX850 491 LED55S/830 PSD NB WH	White	491	66274699	4MX850 491 LED40S/840 PSD DA20 SI	Silver	491
66118399	4MX850 491 LED55S/840 PSD NB WH	White	491	66129999	4MX850 581 LED55S/830 PSD NB SI	Silver	581
66119099	4MX850 491 LED55S/830 PSD WB WH	White	491	66130599	4MX850 581 LED55S/840 PSD NB SI	Silver	581
66120699	4MX850 491 LED55S/840 PSD WB WH	White	491	66131299	4MX850 581 LED55S/830 PSD WB SI	Silver	581
66166499	4MX850 491 LED40S/840 PSD NB WH	White	491	66132999	4MX850 581 LED55S/840 PSD WB SI	Silver	581
66167199	4MX850 491 LED40S/830 PSD WB WH	White	491	66176399	4MX850 581 LED40S/830 PSD NB SI	Silver	581
66168899	4MX850 491 LED40S/840 PSD WB WH	White	491	66177099	4MX850 581 LED40S/840 PSD NB SI	Silver	581
66262399	4MX850 491 LED55S/840 PSD DA20 WH	White	491	66180099	4MX850 581 LED40S/830 PSD WB SI	Silver	581
66269299	4MX850 491 LED40S/830 PSD DA20 WH	White	491	66178799	4MX850 581 LED40S/840 PSD WB SI	Silver	581
66270899	4MX850 491 LED40S/840 PSD DA20 WH	White	491	66267899	4MX850 581 LED55S/830 PSD DA20 SI	Silver	581
66601099	4MX850 491 LED66S/840 PSD DA20 WH	White	491	66268599	4MX850 581 LED55S/840 PSD DA20 SI	Silver	581
66602799	4MX850 491 LED66S/840 PSD WB WH	White	491	66275399	4MX850 581 LED40S/830 PSD DA20 SI	Silver	581
66603499	4MX850 491 LED66S/840 PSD NB WH	White	491	66276099	4MX850 581 LED40S/840 PSD DA20 SI	Silver	581
66692899	4MX850 491 LED66S/830 PSD DA20 WH	White	491				

