



Maxos LED Industry – innovative, flexible solution delivers ideal light output

Maxos LED

Customers in the industrial and retail sectors are looking for general lighting solutions with a justifiable payback, while meeting all relevant norms for supermarkets and industry applications. For a limited investment, Maxos LED Industry offers best-in-class energy savings while delivering high lux levels at the required color temperatures and glare factors. The minimalistic Maxos LED Industry system comprises exchangeable mid-power LED boards mounted on a standard Maxos trunking rail. A choice of wide and medium-beam lenses means flexibility in light distribution. Compared with a conventional fluorescent installation, this highly efficient LED solution offers full payback in less than three years. And the benefits keep coming: the use of our upgradable LED engine platform makes Maxos LED Industry a truly future-proof solution.

Benefits

- Substantial energy savings for a limited investment
- Comfortable light, long lifetime
- Compatibility with proven Maxos trunking system

Maxos LED

Features

- Mid-power LED boards; exchangeable LED unit
- Up to 165 lm/W efficiency
- LED gear trays for T5 and TL-D-length trunkings (high lumen output); replacement LED gear trays with same lumen packages as installed T5 and TL-D solutions (lower wattage)
- Choice of narrow, medium, double asymmetric and asymmetric lenses
- Compatible with our standard Maxos and TTX400 rails for TL5 49 W and TL-D 58 W lengths

Application

- Industry
- Warehouses
- Supermarkets, DIY stores, electronics retailers
- Showrooms

Specifications

Type	4MX850	Performance Ambient Temperature Tq	+25 °C
Light source	Philips Fortimo LEDline 3R	Operating temperature range	-20 to +35 °C
Power	25 W (4000 lm, 4000 K) 33 W (5500 lm, 4000 K) 41 W (6600 lm, 4000 K) 53 W (8000 lm, 4000 K)	Driver	Titanium, easy to replace
Beam angle	2 x 50° (wide beam) 2 x 25° (narrow beam) A20° (asymmetric) DA20° (double asymmetric) 2 x DA35° (double asymmetric)	Power/Data supply	75 Watt (max power), programmable
Luminous flux	Up to 6600 lumen	Mains voltage	220-240 V / 50-60 Hz
Correlated Color Temperature	3000, 4000 or 5000 K	Dimming	DALI dimmable and fixed output versions
Color Rendering Index	> 80	Options	Emergency lighting: central (EL) or with battery (EL3)
Lumen maintenance at median useful life* 50000 h	L80	Material	Gear tray: sheet metal Lens plate: PMMA
Control gear failure rate 5% at median useful life 50000 h		Color	White (WH) and silver (SI)
		Connection	Electrical contact via standard Maxos through-wiring connector
		Maintenance	Via clicking out the gear unit from the rail
		Installation	Fixation of the 4MX850 unit on the Maxos trunking with springs Suspended or surface (ceiling) mounted
		Remarks	No exchange of bare LED engines, only the complete 4MX850 unit (1.5 m in length)

Maxos LED

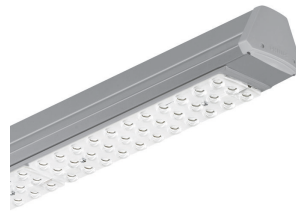
Versions



Maxos LED Industry 4MX850
electrical unit



Maxos Led Industry - Generation 4
- 1 unit for TL5 49 W - LED
Module, system flux 6600 lm -
840 neutral white - Power supply
unit with DALI interface and
constant light output - Wide beam
- Constant light output -
Connection unit 5-pole - White



Product details

Top view of insert



Close-up view from below



Partial side view



Application Conditions

Maxos LED

Order Code	Full Product Name	Ambient temperature range	Maximum dim level	Suitable for random switching
910500457964	4MX850 581 LED80S/840 PSD NB WH	-20 to +35 °C	1%	Not applicable
910500457965	4MX850 581 LED80S/840 PSD WB WH	-20 to +35 °C	1%	Not applicable
910500460003	4MX850 581 LED66S/840 PSD- CLO WB WH	-20 to +35 °C	1%	Not applicable
910500460004	4MX850 581 LED80S/840 PSD- CLO WB WH	-20 to +35 °C	1%	Not applicable
910500460007	4MX850 581 LED80S/840 PSD NB WH C-2R	-20 to +35 °C	1%	Not applicable
910500460008	4MX850 581 LED80S/840 PSD WB WH C-2R	-20 to +35 °C	1%	Not applicable
910500460009	4MX850 581 LED66S/840 PSD NB WH C-2R	-20 to +35 °C	1%	Not applicable
910500460010	4MX850 581 LED66S/840 PSD WB WH C-2R	-20 to +35 °C	1%	Not applicable
910500460048	4MX850 581 LED80S/840 PSD VWB WH	-20 to +35 °C	1%	Not applicable
910500460074	4MX866 581 LED66S/840 PSD WB WH	-20 to +35 °C	1%	Not applicable
910500460222	4MX850 581 LED66S/840 PSD DA20 WH	-20 to +35 °C	1%	Not applicable
910500460223	4MX850 581 LED80S/840 PSD DA20 WH	-20 to +35 °C	1%	Not applicable
910500460224	4MX850 581 LED66S/840 PSD DA20 WH C-2R	-20 to +35 °C	1%	Not applicable
910500460225	4MX850 581 LED80S/840 PSD DA20 WH C-2R	-20 to +35 °C	1%	Not applicable
910500460226	4MX850 581 LED66S/840 PSD- CLO DA20 WH	-20 to +35 °C	1%	Not applicable
910500460227	4MX850 581 LED80S/840 PSD- CLO DA20 WH	-20 to +35 °C	1%	Not applicable

Order Code	Full Product Name	Ambient temperature range	Maximum dim level	Suitable for random switching
910500460243	4MX866 581 LED55S/840 PSD DA20 WH	-20 to +35 °C	1%	Not applicable
910500460244	4MX866 581 LED55S/840 PSD NB WH	-20 to +35 °C	1%	Not applicable
910500460245	4MX866 581 LED55S/840 PSD WB WH	-20 to +35 °C	1%	Not applicable
910500460249	4MX866 581 LED66S/840 PSD DA20 WH	-20 to +35 °C	1%	Not applicable
910500460250	4MX866 581 LED55S/840 PSD DA20 WH C-2R	-20 to +35 °C	1%	Not applicable
910500460251	4MX866 581 LED55S/840 PSD WB WH C-2R	-20 to +35 °C	1%	Not applicable
910500460252	4MX866 581 LED66S/840 PSD DA20 WH C-2R	-20 to +35 °C	1%	Not applicable
910500460253	4MX866 581 LED66S/840 PSD NB WH C-2R	-20 to +35 °C	1%	Not applicable
910500460273	4MX883 581 LED55S/840 PSD DA20 WH	-20 to +35 °C	1%	Not applicable
910500460274	4MX883 581 LED55S/840 PSD NB WH	-20 to +35 °C	1%	Not applicable
910500460275	4MX883 581 LED55S/840 PSD WB WH	-20 to +35 °C	1%	Not applicable
910500460279	4MX883 581 LED66S/840 PSD DA20 WH	-20 to +35 °C	1%	Not applicable
910500460280	4MX883 581 LED66S/840 PSD WB WH	-20 to +35 °C	1%	Not applicable
910500460281	4MX883 581 LED55S/840 PSD DA20 WH C-2R	-20 to +35 °C	1%	Not applicable
910500460282	4MX883 581 LED55S/840 PSD NB WH C-2R	-20 to +35 °C	1%	Not applicable
910500460283	4MX883 581 LED55S/840 PSD WB WH C-2R	-20 to +35 °C	1%	Not applicable

Order Code	Full Product Name	Ambient temperature range	Maximum dim level	Suitable for random switching
910500460284	4MX883 581 LED66S/840 PSD DA20 WH C-2R	-20 to +35 °C	1%	Not applicable
910500460285	4MX883 581 LED66S/840 PSD NB WH C-2R	-20 to +35 °C	1%	Not applicable
910500460393	4MX850 581 LED55S/840 PSD NB WH C-2R	-20 to +35 °C	1%	Not applicable
910500460486	4MX866 581 LED66S/840 PSD WB WH ELP1	-20 to +35 °C	1%	Not applicable
910500460488	4MX883 581 LED66S/840 PSD WB WH ELP3	-20 to +35 °C	1%	Not applicable
910500460490	4MX866 581 LED66S/840 PSD WB WH ELD1	-20 to +35 °C	1%	Not applicable
910500460492	4MX883 581 LED66S/840 PSD WB WH ELD3	-20 to +35 °C	1%	Not applicable
910500460595	4MX850 581 LED55S/840 PSD WB WH C-2R	-20 to +35 °C	1%	Not applicable
910629120426	4MX850 581 LED55S/830 PSD NB WH	-20 to +35 °C	1%	Not applicable
910629120526	4MX850 581 LED55S/840 PSD NB WH	-20 to +35 °C	1%	Not applicable
910629120626	4MX850 581 LED55S/830 PSD WB WH	-20 to +35 °C	1%	Not applicable
910629120726	4MX850 581 LED55S/840 PSD WB WH	-20 to +35 °C	1%	Not applicable
910629122026	4MX850 581 LED40S/830 PSD NB WH	-20 to +35 °C	1%	Not applicable
910629122126	4MX850 581 LED40S/840 PSD NB WH	-20 to +35 °C	1%	Not applicable
910629122226	4MX850 581 LED40S/830 PSD WB WH	-20 to +35 °C	1%	Not applicable
910629122326	4MX850 581 LED40S/840 PSD WB WH	-20 to +35 °C	1%	Not applicable

Order Code	Full Product Name	Ambient temperature range	Maximum dim level	Suitable for random switching
910629125026	4MX850 581 LED55S/830 PSD DA20 WH	-20 to +35 °C	1%	Not applicable
910629125126	4MX850 581 LED55S/840 PSD DA20 WH	-20 to +35 °C	1%	Not applicable
910629125826	4MX850 581 LED40S/830 PSD DA20 WH	-20 to +35 °C	1%	Not applicable
910629125926	4MX850 581 LED40S/840 PSD DA20 WH	-20 to +35 °C	1%	Not applicable
910629160326	4MX850 581 LED66S/840 PSD WB WH	-20 to +35 °C	1%	Not applicable
910629160426	4MX850 581 LED66S/840 PSD NB WH	-20 to +35 °C	1%	Not applicable
910629165226	4MX883 581 LED66S/840 PSD WB WH C-2R	-20 to +35 °C	1%	Not applicable
910629165326	4MX866 581 LED66S/840 PSD WB WH C-2R	-20 to +35 °C	1%	Not applicable
910629166126	4MX850 581 LED55S/840 PSD DA35 WH	-20 to +35 °C	1%	Not applicable
910500460013	4MX850 491 LED66S/840 PSD- CLO WB WH	-20 to +35 °C	1%	Not applicable
910500460014	4MX850 491 LED80S/840 PSD- CLO WB WH	-20 to +35 °C	1%	Not applicable
910500460016	4MX850 491 LED66S/840 PSD- CLO NB WH	-20 to +35 °C	1%	Not applicable
910500460017	4MX850 491 LED80S/840 PSD- CLO NB WH	-20 to +35 °C	1%	Not applicable
910500460023	4MX850 491 LED80S/840 PSD- CLO DA20 WH	-20 to +35 °C	1%	Not applicable
910500460041	4MX866 491 LED66S/840 PSD WB WH C-2R	-20 to +35 °C	1%	Not applicable
910500460049	4MX850 491 LED80S/840 PSD VWB WH	-20 to +35 °C	1%	Not applicable

Order Code	Full Product Name	Ambient temperature range	Maximum dim level	Suitable for random switching
910500460059	4MX866 491 LED55S/840 PSD WB WH	-20 to +35 °C	1%	Not applicable
910500460075	4MX850 491 LED80S/840 PSD VWB WH C-2R	-20 to +35 °C	1%	Not applicable
910500460080	4MX866 491 LED55S/840 PSD WB WH C-2R	-20 to +35 °C	1%	Not applicable
910500460093	4MX866 491 LED55S/840 PSD NB WH	-20 to +35 °C	1%	Not applicable
910500460215	4MX850 491 LED80S/840 PSD DA20 WH	-20 to +35 °C	1%	Not applicable
910500460216	4MX850 491 LED66S/840 PSD DA20 WH C-2R	-20 to +35 °C	1%	Not applicable
910500460217	4MX850 491 LED66S/840 PSD NB WH C-2R	-20 to +35 °C	1%	Not applicable
910500460218	4MX850 491 LED66S/840 PSD WB WH C-2R	-20 to +35 °C	1%	Not applicable
910500460219	4MX850 491 LED80S/840 PSD DA20 WH C-2R	-20 to +35 °C	1%	Not applicable
910500460220	4MX850 491 LED80S/840 PSD NB WH C-2R	-20 to +35 °C	1%	Not applicable
910500460221	4MX850 491 LED80S/840 PSD WB WH C-2R	-20 to +35 °C	1%	Not applicable
910500460231	4MX866 491 LED55S/840 PSD DA20 WH	-20 to +35 °C	1%	Not applicable
910500460235	4MX866 491 LED66S/840 PSD DA20 WH	-20 to +35 °C	1%	Not applicable
910500460236	4MX866 491 LED66S/840 PSD WB WH	-20 to +35 °C	1%	Not applicable
910500460237	4MX866 491 LED55S/840 PSD DA20 WH C-2R	-20 to +35 °C	1%	Not applicable
910500460238	4MX866 491 LED55S/840 PSD NB WH C-2R	-20 to +35 °C	1%	Not applicable

Order Code	Full Product Name	Ambient temperature range	Maximum dim level	Suitable for random switching
910500460239	4MX866 491 LED66S/840 PSD DA20 WH C-2R	-20 to +35 °C	1%	Not applicable
910500460240	4MX866 491 LED66S/840 PSD NB WH C-2R	-20 to +35 °C	1%	Not applicable
910500460257	4MX883 491 LED55S/840 PSD DA20 WH	-20 to +35 °C	1%	Not applicable
910500460258	4MX883 491 LED55S/840 PSD NB WH	-20 to +35 °C	1%	Not applicable
910500460259	4MX883 491 LED55S/840 PSD WB WH	-20 to +35 °C	1%	Not applicable
910500460263	4MX883 491 LED66S/840 PSD DA20 WH	-20 to +35 °C	1%	Not applicable
910500460264	4MX883 491 LED66S/840 PSD NB WH	-20 to +35 °C	1%	Not applicable
910500460265	4MX883 491 LED66S/840 PSD WB WH	-20 to +35 °C	1%	Not applicable
910500460266	4MX883 491 LED55S/840 PSD DA20 WH C-2R	-20 to +35 °C	1%	Not applicable
910500460267	4MX883 491 LED55S/840 PSD NB WH C-2R	-20 to +35 °C	1%	Not applicable
910500460268	4MX883 491 LED55S/840 PSD WB WH C-2R	-20 to +35 °C	1%	Not applicable
910500460269	4MX883 491 LED66S/840 PSD DA20 WH C-2R	-20 to +35 °C	1%	Not applicable
910500460270	4MX883 491 LED66S/840 PSD NB WH C-2R	-20 to +35 °C	1%	Not applicable
910500460271	4MX883 491 LED66S/840 PSD WB WH C-2R	-20 to +35 °C	1%	Not applicable
910500460391	4MX850 491 LED55S/840 PSD WB WH C-2R	-20 to +35 °C	1%	Not applicable
910500460415	4MX850 491 LED66S/840 PSD VWB WH C-2R	-20 to +35 °C	1%	Not applicable

Maxos LED

Order Code	Full Product Name	Ambient temperature range	Maximum dim level	Suitable for random switching
910500460420	4MX850 491 LED40S/840 PSD WB WH C-2R	-20 to +35 °C	1%	Not applicable
910500460485	4MX866 491 LED66S/840 PSD WB WH ELP1	-20 to +35 °C	1%	Not applicable
910500460487	4MX883 491 LED66S/840 PSD WB WH ELP3	-20 to +35 °C	1%	Not applicable
910500460489	4MX866 491 LED66S/840 PSD WB WH ELD1	-20 to +35 °C	1%	Not applicable
910500460491	4MX883 491 LED66S/840 PSD WB WH ELD3	-20 to +35 °C	1%	Not applicable
910500460537	4MX850 491 LED40S/840 PSD NB WH C-2R	-20 to +35 °C	1%	Not applicable
910500460538	4MX850 491 LED55S/840 PSD NB WH C-2R	-20 to +35 °C	1%	Not applicable
910500460562	4MX850 491 LED80S/840 PSD A20 WH C-2R	-	-	-
910629120026	4MX850 491 LED55S/830 PSD NB WH	-20 to +35 °C	1%	Not applicable
910629120126	4MX850 491 LED55S/840 PSD NB WH	-20 to +35 °C	1%	Not applicable
910629120226	4MX850 491 LED55S/830 PSD WB WH	-20 to +35 °C	1%	Not applicable
910629120326	4MX850 491 LED55S/840 PSD WB WH	-20 to +35 °C	1%	Not applicable
910629121626	4MX850 491 LED40S/830 PSD NB WH	-20 to +35 °C	1%	Not applicable
910629121726	4MX850 491 LED40S/840 PSD NB WH	-20 to +35 °C	1%	Not applicable
910629121826	4MX850 491 LED40S/830 PSD WB WH	-20 to +35 °C	1%	Not applicable
910629121926	4MX850 491 LED40S/840 PSD WB WH	-20 to +35 °C	1%	Not applicable

Order Code	Full Product Name	Ambient temperature range	Maximum dim level	Suitable for random switching
910629124826	4MX850 491 LED55S/830 PSD DA20 WH	-20 to +35 °C	1%	Not applicable
910629124926	4MX850 491 LED55S/840 PSD DA20 WH	-20 to +35 °C	1%	Not applicable
910629125626	4MX850 491 LED40S/830 PSD DA20 WH	-20 to +35 °C	1%	Not applicable
910629125726	4MX850 491 LED40S/840 PSD DA20 WH	-20 to +35 °C	1%	Not applicable
910629158026	4MX850 491 LED66S/840 PSD DA20 WH	-20 to +35 °C	1%	Not applicable
910629158126	4MX850 491 LED66S/840 PSD WB WH	-20 to +35 °C	1%	Not applicable
910629158226	4MX850 491 LED66S/840 PSD NB WH	-20 to +35 °C	1%	Not applicable
910629160026	4MX850 491 LED66S/830 PSD DA20 WH	-20 to +35 °C	1%	Not applicable
910629160126	4MX850 491 LED66S/830 PSD WB WH	-20 to +35 °C	1%	Not applicable
910629160226	4MX850 491 LED66S/830 PSD NB WH	-20 to +35 °C	1%	Not applicable
910629160526	4MX850 491 LED40S/840 PSD A20 WH	-20 to +35 °C	1%	Not applicable
910629160626	4MX850 491 LED55S/840 PSD A20 WH	-20 to +35 °C	1%	Not applicable
910629160726	4MX850 491 LED55S/830 PSD A20 WH	-20 to +35 °C	1%	Not applicable
910629161026	4MX850 491 LED40S/830 PSD A20 WH	-20 to +35 °C	1%	Not applicable
910629162126	4MX850 491 LED66S/840 PSD A20 WH	-20 to +35 °C	1%	Not applicable
910629165926	4MX850 491 LED55S/840 PSD DA35 WH	-20 to +35 °C	1%	Not applicable

Maxos LED

Order Code	Full Product Name	Ambient temperature range	Maximum dim level	Suitable for random switching
910629166026	4MX850 491 LED66S/840 PSD DA35 WH	-20 to +35 °C	1%	Not applicable
910629167426	4MX850 491 LED80S/840 PSD NB WH	-20 to +35 °C	1%	Not applicable
910629167526	4MX850 491 LED80S/840 PSD WB WH	-20 to +35 °C	1%	Not applicable
910629167626	4MX866 491 LED66S/840 PSD NB WH	-20 to +35 °C	1%	Not applicable
910500460502	4MX850 491 LED80S/840 PSD WB SI	-	-	-
910629120826	4MX850 491 LED55S/830 PSD NB SI	-20 to +35 °C	1%	Not applicable
910629120926	4MX850 491 LED55S/840 PSD NB SI	-20 to +35 °C	1%	Not applicable
910629121026	4MX850 491 LED55S/830 PSD WB SI	-20 to +35 °C	1%	Not applicable
910629121126	4MX850 491 LED55S/840 PSD WB SI	-20 to +35 °C	1%	Not applicable
910629122426	4MX850 491 LED40S/830 PSD NB SI	-20 to +35 °C	1%	Not applicable
910629122526	4MX850 491 LED40S/840 PSD NB SI	-20 to +35 °C	1%	Not applicable
910629122626	4MX850 491 LED40S/830 PSD WB SI	-20 to +35 °C	1%	Not applicable
910629122726	4MX850 491 LED40S/840 PSD WB SI	-20 to +35 °C	1%	Not applicable
910629125226	4MX850 491 LED55S/830 PSD DA20 SI	-20 to +35 °C	1%	Not applicable
910629125326	4MX850 491 LED55S/840 PSD DA20 SI	-20 to +35 °C	1%	Not applicable
910629126026	4MX850 491 LED40S/830 PSD DA20 SI	-20 to +35 °C	1%	Not applicable

Order Code	Full Product Name	Ambient temperature range	Maximum dim level	Suitable for random switching
910629126126	4MX850 491 LED40S/840 PSD DA20 SI	-20 to +35 °C	1%	Not applicable
910629160826	4MX850 491 LED55S/830 PSD A20 SI	-20 to +35 °C	1%	Not applicable
910629160926	4MX850 491 LED55S/840 PSD A20 SI	-20 to +35 °C	1%	Not applicable
910629161126	4MX850 491 LED40S/830 PSD A20 SI	-20 to +35 °C	1%	Not applicable
910629161226	4MX850 491 LED40S/840 PSD A20 SI	-20 to +35 °C	1%	Not applicable
910629162226	4MX850 491 LED66S/840 PSD A20 SI	-20 to +35 °C	1%	Not applicable
910629165626	4MX850 491 LED55S/840 PSD DA35 SI	-20 to +35 °C	1%	Not applicable
910629121226	4MX850 581 LED55S/830 PSD NB SI	-20 to +35 °C	1%	Not applicable
910629121326	4MX850 581 LED55S/840 PSD NB SI	-20 to +35 °C	1%	Not applicable
910629121426	4MX850 581 LED55S/830 PSD WB SI	-20 to +35 °C	1%	Not applicable
910629121526	4MX850 581 LED55S/840 PSD WB SI	-20 to +35 °C	1%	Not applicable
910629122826	4MX850 581 LED40S/830 PSD NB SI	-20 to +35 °C	1%	Not applicable
910629122926	4MX850 581 LED40S/840 PSD NB SI	-20 to +35 °C	1%	Not applicable
910629123026	4MX850 581 LED40S/830 PSD WB SI	-20 to +35 °C	1%	Not applicable
910629123126	4MX850 581 LED40S/840 PSD WB SI	-20 to +35 °C	1%	Not applicable
910629125426	4MX850 581 LED55S/830 PSD DA20 SI	-20 to +35 °C	1%	Not applicable

Order Code	Full Product Name	Ambient temperature range	Maximum dim level	Suitable for random switching
910629125526	4MX850 581 LED55S/840 PSD DA20 SI	-20 to +35 °C	1%	Not applicable
910629126226	4MX850 581 LED40S/830 PSD DA20 SI	-20 to +35 °C	1%	Not applicable

Order Code	Full Product Name	Ambient temperature range	Maximum dim level	Suitable for random switching
910629126326	4MX850 581 LED40S/840 PSD DA20 SI	-20 to +35 °C	1%	Not applicable
910629165726	4MX850 581 LED55S/840 PSD DA35 SI	-20 to +35 °C	1%	Not applicable

Approval and Application

Order Code	Full Product Name	Mech. impact protection code	Ingress protection code
910500457964	4MX850 581 LED80S/840 PSD NB WH	IK02	IP20
910500457965	4MX850 581 LED80S/840 PSD WB WH	IK02	IP20
910500460003	4MX850 581 LED66S/840 PSD-CLO WB WH	IK02	IP20
910500460004	4MX850 581 LED80S/840 PSD-CLO WB WH	IK02	IP20
910500460007	4MX850 581 LED80S/840 PSD NB WH C-2R	IK02	IP20
910500460008	4MX850 581 LED80S/840 PSD WB WH C-2R	IK02	IP20
910500460009	4MX850 581 LED66S/840 PSD NB WH C-2R	IK02	IP20
910500460010	4MX850 581 LED66S/840 PSD WB WH C-2R	IK02	IP20
910500460048	4MX850 581 LED80S/840 PSD VWB WH	IK02	IP20
910500460074	4MX866 581 LED66S/840 PSD WB WH	IK02	IP20
910500460222	4MX850 581 LED66S/840 PSD DA20 WH	IK02	IP20
910500460223	4MX850 581 LED80S/840 PSD DA20 WH	IK02	IP20
910500460224	4MX850 581 LED66S/840 PSD DA20 WH C-2R	IK02	IP20
910500460225	4MX850 581 LED80S/840 PSD DA20 WH C-2R	IK02	IP20
910500460226	4MX850 581 LED66S/840 PSD-CLO DA20 WH	IK02	IP20
910500460227	4MX850 581 LED80S/840 PSD-CLO DA20 WH	IK02	IP20
910500460243	4MX866 581 LED55S/840 PSD DA20 WH	IK02	IP20
910500460244	4MX866 581 LED55S/840 PSD NB WH	IK02	IP20
910500460245	4MX866 581 LED55S/840 PSD WB WH	IK02	IP20
910500460249	4MX866 581 LED66S/840 PSD DA20 WH	IK02	IP20

Order Code	Full Product Name	Mech. impact protection code	Ingress protection code
910500460250	4MX866 581 LED55S/840 PSD DA20 WH C-2R	IK02	IP20
910500460251	4MX866 581 LED55S/840 PSD WB WH C-2R	IK02	IP20
910500460252	4MX866 581 LED66S/840 PSD DA20 WH C-2R	IK02	IP20
910500460253	4MX866 581 LED66S/840 PSD NB WH C-2R	IK02	IP20
910500460273	4MX883 581 LED55S/840 PSD DA20 WH	IK02	IP20
910500460274	4MX883 581 LED55S/840 PSD NB WH	IK02	IP20
910500460275	4MX883 581 LED55S/840 PSD WB WH	IK02	IP20
910500460279	4MX883 581 LED66S/840 PSD DA20 WH	IK02	IP20
910500460280	4MX883 581 LED66S/840 PSD WB WH	IK02	IP20
910500460281	4MX883 581 LED55S/840 PSD DA20 WH C-2R	IK02	IP20
910500460282	4MX883 581 LED55S/840 PSD NB WH C-2R	IK02	IP20
910500460283	4MX883 581 LED55S/840 PSD WB WH C-2R	IK02	IP20
910500460284	4MX883 581 LED66S/840 PSD DA20 WH C-2R	IK02	IP20
910500460285	4MX883 581 LED66S/840 PSD NB WH C-2R	IK02	IP20
910500460393	4MX850 581 LED55S/840 PSD NB WH C-2R	IK02	IP20
910500460486	4MX866 581 LED66S/840 PSD WB WH ELP1	IK02	IP20
910500460488	4MX883 581 LED66S/840 PSD WB WH ELP3	IK02	IP20
910500460490	4MX866 581 LED66S/840 PSD WB WH ELD1	IK02	IP20
910500460492	4MX883 581 LED66S/840 PSD WB WH ELD3	IK02	IP20
910500460595	4MX850 581 LED55S/840 PSD WB WH C-2R	IK02	IP20

Maxos LED

Order Code	Full Product Name	Mech. impact protection code	Ingress protection code
910629120426	4MX850 581 LED55S/830 PSD NB WH	IK02	IP20
910629120526	4MX850 581 LED55S/840 PSD NB WH	IK02	IP20
910629120626	4MX850 581 LED55S/830 PSD WB WH	IK02	IP20
910629120726	4MX850 581 LED55S/840 PSD WB WH	IK02	IP20
910629122026	4MX850 581 LED40S/830 PSD NB WH	IK02	IP20
910629122126	4MX850 581 LED40S/840 PSD NB WH	IK02	IP20
910629122226	4MX850 581 LED40S/830 PSD WB WH	IK02	IP20
910629122326	4MX850 581 LED40S/840 PSD WB WH	IK02	IP20
910629125026	4MX850 581 LED55S/830 PSD DA20 WH	IK02	IP20
910629125126	4MX850 581 LED55S/840 PSD DA20 WH	IK02	IP20
910629125826	4MX850 581 LED40S/830 PSD DA20 WH	IK02	IP20
910629125926	4MX850 581 LED40S/840 PSD DA20 WH	IK02	IP20
910629160326	4MX850 581 LED66S/840 PSD WB WH	IK02	IP20
910629160426	4MX850 581 LED66S/840 PSD NB WH	IK02	IP20
910629165226	4MX883 581 LED66S/840 PSD WB WH C-2R	IK02	IP20
910629165326	4MX866 581 LED66S/840 PSD WB WH C-2R	IK02	IP20
910629166126	4MX850 581 LED55S/840 PSD DA35 WH	IK02	IP20
910500460013	4MX850 491 LED66S/840 PSD-CLO WB WH	IK02	IP20
910500460014	4MX850 491 LED80S/840 PSD-CLO WB WH	IK02	IP20
910500460016	4MX850 491 LED66S/840 PSD-CLO NB WH	IK02	IP20
910500460017	4MX850 491 LED80S/840 PSD-CLO NB WH	IK02	IP20
910500460023	4MX850 491 LED80S/840 PSD-CLO DA20 WH	IK02	IP20
910500460041	4MX866 491 LED66S/840 PSD WB WH C-2R	IK02	IP20
910500460049	4MX850 491 LED80S/840 PSD VWB WH	IK02	IP20
910500460059	4MX866 491 LED55S/840 PSD WB WH	IK02	IP20
910500460075	4MX850 491 LED80S/840 PSD VWB WH C-2R	IK02	IP20
910500460080	4MX866 491 LED55S/840 PSD WB WH C-2R	IK02	IP20
910500460093	4MX866 491 LED55S/840 PSD NB WH	IK02	IP20
910500460215	4MX850 491 LED80S/840 PSD DA20 WH	IK02	IP20

Order Code	Full Product Name	Mech. impact protection code	Ingress protection code
910500460216	4MX850 491 LED66S/840 PSD DA20 WH C-2R	IK02	IP20
910500460217	4MX850 491 LED66S/840 PSD NB WH C-2R	IK02	IP20
910500460218	4MX850 491 LED66S/840 PSD WB WH C-2R	IK02	IP20
910500460219	4MX850 491 LED80S/840 PSD DA20 WH C-2R	IK02	IP20
910500460220	4MX850 491 LED80S/840 PSD NB WH C-2R	IK02	IP20
910500460221	4MX850 491 LED80S/840 PSD WB WH C-2R	IK02	IP20
910500460231	4MX866 491 LED55S/840 PSD DA20 WH	IK02	IP20
910500460235	4MX866 491 LED66S/840 PSD DA20 WH	IK02	IP20
910500460236	4MX866 491 LED66S/840 PSD WB WH	IK02	IP20
910500460237	4MX866 491 LED55S/840 PSD DA20 WH C-2R	IK02	IP20
910500460238	4MX866 491 LED55S/840 PSD NB WH C-2R	IK02	IP20
910500460239	4MX866 491 LED66S/840 PSD DA20 WH C-2R	IK02	IP20
910500460240	4MX866 491 LED66S/840 PSD NB WH C-2R	IK02	IP20
910500460257	4MX883 491 LED55S/840 PSD DA20 WH	IK02	IP20
910500460258	4MX883 491 LED55S/840 PSD NB WH	IK02	IP20
910500460259	4MX883 491 LED55S/840 PSD WB WH	IK02	IP20
910500460263	4MX883 491 LED66S/840 PSD DA20 WH	IK02	IP20
910500460264	4MX883 491 LED66S/840 PSD NB WH	IK02	IP20
910500460265	4MX883 491 LED66S/840 PSD WB WH	IK02	IP20
910500460266	4MX883 491 LED55S/840 PSD DA20 WH C-2R	IK02	IP20
910500460267	4MX883 491 LED55S/840 PSD NB WH C-2R	IK02	IP20
910500460268	4MX883 491 LED55S/840 PSD WB WH C-2R	IK02	IP20
910500460269	4MX883 491 LED66S/840 PSD DA20 WH C-2R	IK02	IP20
910500460270	4MX883 491 LED66S/840 PSD NB WH C-2R	IK02	IP20
910500460271	4MX883 491 LED66S/840 PSD WB WH C-2R	IK02	IP20
910500460391	4MX850 491 LED55S/840 PSD WB WH C-2R	IK02	IP20

Order Code	Full Product Name	Mech. impact protection code	Ingress protection code
910500460415	4MX850 491 LED66S/840 PSD VWB WH C-2R	IK02	IP20
910500460420	4MX850 491 LED40S/840 PSD WB WH C-2R	IK02	IP20
910500460485	4MX866 491 LED66S/840 PSD WB WH ELP1	IK02	IP20
910500460487	4MX883 491 LED66S/840 PSD WB WH ELP3	IK02	IP20
910500460489	4MX866 491 LED66S/840 PSD WB WH ELD1	IK02	IP20
910500460491	4MX883 491 LED66S/840 PSD WB WH ELD3	IK02	IP20
910500460537	4MX850 491 LED40S/840 PSD NB WH C-2R	IK02	IP20
910500460538	4MX850 491 LED55S/840 PSD NB WH C-2R	IK02	IP20
910500460562	4MX850 491 LED80S/840 PSD A20 WH C-2R	-	-
910629120026	4MX850 491 LED55S/830 PSD NB WH	IK02	IP20
910629120126	4MX850 491 LED55S/840 PSD NB WH	IK02	IP20
910629120226	4MX850 491 LED55S/830 PSD WB WH	IK02	IP20
910629120326	4MX850 491 LED55S/840 PSD WB WH	IK02	IP20
910629121626	4MX850 491 LED40S/830 PSD NB WH	IK02	IP20
910629121726	4MX850 491 LED40S/840 PSD NB WH	IK02	IP20
910629121826	4MX850 491 LED40S/830 PSD WB WH	IK02	IP20
910629121926	4MX850 491 LED40S/840 PSD WB WH	IK02	IP20
910629124826	4MX850 491 LED55S/830 PSD DA20 WH	IK02	IP20
910629124926	4MX850 491 LED55S/840 PSD DA20 WH	IK02	IP20
910629125626	4MX850 491 LED40S/830 PSD DA20 WH	IK02	IP20
910629125726	4MX850 491 LED40S/840 PSD DA20 WH	IK02	IP20
910629158026	4MX850 491 LED66S/840 PSD DA20 WH	IK02	IP20
910629158126	4MX850 491 LED66S/840 PSD WB WH	IK02	IP20
910629158226	4MX850 491 LED66S/840 PSD NB WH	IK02	IP20
910629160026	4MX850 491 LED66S/830 PSD DA20 WH	IK02	IP20
910629160126	4MX850 491 LED66S/830 PSD WB WH	IK02	IP20
910629160226	4MX850 491 LED66S/830 PSD NB WH	IK02	IP20
910629160526	4MX850 491 LED40S/840 PSD A20 WH	IK02	IP20

Order Code	Full Product Name	Mech. impact protection code	Ingress protection code
910629160626	4MX850 491 LED55S/840 PSD A20 WH	IK02	IP20
910629160726	4MX850 491 LED55S/830 PSD A20 WH	IK02	IP20
910629161026	4MX850 491 LED40S/830 PSD A20 WH	IK02	IP20
910629162126	4MX850 491 LED66S/840 PSD A20 WH	IK02	IP20
910629165926	4MX850 491 LED55S/840 PSD DA35 WH	IK02	IP20
910629166026	4MX850 491 LED66S/840 PSD DA35 WH	IK02	IP20
910629167426	4MX850 491 LED80S/840 PSD NB WH	IK02	IP20
910629167526	4MX850 491 LED80S/840 PSD WB WH	IK02	IP20
910629167626	4MX866 491 LED66S/840 PSD NB WH	IK02	IP20
910500460502	4MX850 491 LED80S/840 PSD WB SI	-	-
910629120826	4MX850 491 LED55S/830 PSD NB SI	IK02	IP20
910629120926	4MX850 491 LED55S/840 PSD NB SI	IK02	IP20
910629121026	4MX850 491 LED55S/830 PSD WB SI	IK02	IP20
910629121126	4MX850 491 LED55S/840 PSD WB SI	IK02	IP20
910629122426	4MX850 491 LED40S/830 PSD NB SI	IK02	IP20
910629122526	4MX850 491 LED40S/840 PSD NB SI	IK02	IP20
910629122626	4MX850 491 LED40S/830 PSD WB SI	IK02	IP20
910629122726	4MX850 491 LED40S/840 PSD WB SI	IK02	IP20
910629125226	4MX850 491 LED55S/830 PSD DA20 SI	IK02	IP20
910629125326	4MX850 491 LED55S/840 PSD DA20 SI	IK02	IP20
910629126026	4MX850 491 LED40S/830 PSD DA20 SI	IK02	IP20
910629126126	4MX850 491 LED40S/840 PSD DA20 SI	IK02	IP20
910629160826	4MX850 491 LED55S/830 PSD A20 SI	IK02	IP20
910629160926	4MX850 491 LED55S/840 PSD A20 SI	IK02	IP20
910629161126	4MX850 491 LED40S/830 PSD A20 SI	IK02	IP20
910629161226	4MX850 491 LED40S/840 PSD A20 SI	IK02	IP20
910629162226	4MX850 491 LED66S/840 PSD A20 SI	IK02	IP20
910629165626	4MX850 491 LED55S/840 PSD DA35 SI	IK02	IP20
910629121226	4MX850 581 LED55S/830 PSD NB SI	IK02	IP20
910629121326	4MX850 581 LED55S/840 PSD NB SI	IK02	IP20
910629121426	4MX850 581 LED55S/830 PSD WB SI	IK02	IP20
910629121526	4MX850 581 LED55S/840 PSD WB SI	IK02	IP20
910629122826	4MX850 581 LED40S/830 PSD NB SI	IK02	IP20
910629122926	4MX850 581 LED40S/840 PSD NB SI	IK02	IP20
910629123026	4MX850 581 LED40S/830 PSD WB SI	IK02	IP20
910629123126	4MX850 581 LED40S/840 PSD WB SI	IK02	IP20
910629125426	4MX850 581 LED55S/830 PSD DA20 SI	IK02	IP20

Maxos LED

Order Code	Full Product Name	Mech. impact protection code	Ingress protection code
910629125526	4MX850 581 LED55S/840 PSD DA20 SI	IK02	IP20
910629126226	4MX850 581 LED40S/830 PSD DA20 SI	IK02	IP20

Order Code	Full Product Name	Mech. impact protection code	Ingress protection code
910629126326	4MX850 581 LED40S/840 PSD DA20 SI	IK02	IP20
910629165726	4MX850 581 LED55S/840 PSD DA35 SI	IK02	IP20

Controls and Dimming

Order Code	Full Product Name	Dimmable
910500457964	4MX850 581 LED80S/840 PSD NB WH	Yes
910500457965	4MX850 581 LED80S/840 PSD WB WH	Yes
910500460003	4MX850 581 LED66S/840 PSD-CLO WB WH	Yes
910500460004	4MX850 581 LED80S/840 PSD-CLO WB WH	Yes
910500460007	4MX850 581 LED80S/840 PSD NB WH C-2R	Yes
910500460008	4MX850 581 LED80S/840 PSD WB WH C-2R	Yes
910500460009	4MX850 581 LED66S/840 PSD NB WH C-2R	Yes
910500460010	4MX850 581 LED66S/840 PSD WB WH C-2R	Yes
910500460048	4MX850 581 LED80S/840 PSD VWB WH	Yes
910500460074	4MX866 581 LED66S/840 PSD WB WH	Yes
910500460222	4MX850 581 LED66S/840 PSD DA20 WH	Yes
910500460223	4MX850 581 LED80S/840 PSD DA20 WH	Yes
910500460224	4MX850 581 LED66S/840 PSD DA20 WH C-2R	Yes
910500460225	4MX850 581 LED80S/840 PSD DA20 WH C-2R	Yes
910500460226	4MX850 581 LED66S/840 PSD-CLO DA20 WH	Yes
910500460227	4MX850 581 LED80S/840 PSD-CLO DA20 WH	Yes
910500460243	4MX866 581 LED55S/840 PSD DA20 WH	Yes
910500460244	4MX866 581 LED55S/840 PSD NB WH	Yes
910500460245	4MX866 581 LED55S/840 PSD WB WH	Yes
910500460249	4MX866 581 LED66S/840 PSD DA20 WH	Yes
910500460250	4MX866 581 LED55S/840 PSD DA20 WH C-2R	Yes
910500460251	4MX866 581 LED55S/840 PSD WB WH C-2R	Yes
910500460252	4MX866 581 LED66S/840 PSD DA20 WH C-2R	Yes
910500460253	4MX866 581 LED66S/840 PSD NB WH C-2R	Yes
910500460273	4MX883 581 LED55S/840 PSD DA20 WH	Yes
910500460274	4MX883 581 LED55S/840 PSD NB WH	Yes
910500460275	4MX883 581 LED55S/840 PSD WB WH	Yes
910500460279	4MX883 581 LED66S/840 PSD DA20 WH	Yes
910500460280	4MX883 581 LED66S/840 PSD WB WH	Yes
910500460281	4MX883 581 LED55S/840 PSD DA20 WH C-2R	Yes
910500460282	4MX883 581 LED55S/840 PSD NB WH C-2R	Yes
910500460283	4MX883 581 LED55S/840 PSD WB WH C-2R	Yes
910500460284	4MX883 581 LED66S/840 PSD DA20 WH C-2R	Yes
910500460285	4MX883 581 LED66S/840 PSD NB WH C-2R	Yes
910500460393	4MX850 581 LED55S/840 PSD NB WH C-2R	Yes
910500460486	4MX866 581 LED66S/840 PSD WB WH ELP1	Yes
910500460488	4MX883 581 LED66S/840 PSD WB WH ELP3	Yes
910500460490	4MX866 581 LED66S/840 PSD WB WH ELD1	Yes
910500460492	4MX883 581 LED66S/840 PSD WB WH ELD3	Yes
910500460595	4MX850 581 LED55S/840 PSD WB WH C-2R	Yes
910629120426	4MX850 581 LED55S/830 PSD NB WH	Yes
910629120526	4MX850 581 LED55S/840 PSD NB WH	Yes

Order Code	Full Product Name	Dimmable
910629120626	4MX850 581 LED55S/830 PSD WB WH	Yes
910629120726	4MX850 581 LED55S/840 PSD WB WH	Yes
910629122026	4MX850 581 LED40S/830 PSD NB WH	Yes
910629122126	4MX850 581 LED40S/840 PSD NB WH	Yes
910629122226	4MX850 581 LED40S/830 PSD WB WH	Yes
910629122326	4MX850 581 LED40S/840 PSD WB WH	Yes
910629125026	4MX850 581 LED55S/830 PSD DA20 WH	Yes
910629125126	4MX850 581 LED55S/840 PSD DA20 WH	Yes
910629125826	4MX850 581 LED40S/830 PSD DA20 WH	Yes
910629125926	4MX850 581 LED40S/840 PSD DA20 WH	Yes
910629160326	4MX850 581 LED66S/840 PSD WB WH	Yes
910629160426	4MX850 581 LED66S/840 PSD NB WH	Yes
910629165226	4MX883 581 LED66S/840 PSD WB WH C-2R	Yes
910629165326	4MX866 581 LED66S/840 PSD WB WH C-2R	Yes
910629166126	4MX850 581 LED55S/840 PSD DA35 WH	Yes
910500460013	4MX850 491 LED66S/840 PSD-CLO WB WH	Yes
910500460014	4MX850 491 LED80S/840 PSD-CLO WB WH	Yes
910500460016	4MX850 491 LED66S/840 PSD-CLO NB WH	Yes
910500460017	4MX850 491 LED80S/840 PSD-CLO NB WH	Yes
910500460023	4MX850 491 LED80S/840 PSD-CLO DA20 WH	Yes
910500460041	4MX866 491 LED66S/840 PSD WB WH C-2R	Yes
910500460049	4MX850 491 LED80S/840 PSD VWB WH	Yes
910500460059	4MX866 491 LED55S/840 PSD WB WH	Yes
910500460075	4MX850 491 LED80S/840 PSD VWB WH C-2R	Yes
910500460080	4MX866 491 LED55S/840 PSD WB WH C-2R	Yes
910500460093	4MX866 491 LED55S/840 PSD NB WH	Yes
910500460215	4MX850 491 LED80S/840 PSD DA20 WH	Yes
910500460216	4MX850 491 LED66S/840 PSD DA20 WH C-2R	Yes
910500460217	4MX850 491 LED66S/840 PSD NB WH C-2R	Yes
910500460218	4MX850 491 LED66S/840 PSD WB WH C-2R	Yes
910500460219	4MX850 491 LED80S/840 PSD DA20 WH C-2R	Yes
910500460220	4MX850 491 LED80S/840 PSD NB WH C-2R	Yes
910500460221	4MX850 491 LED80S/840 PSD WB WH C-2R	Yes
910500460231	4MX866 491 LED55S/840 PSD DA20 WH	Yes
910500460235	4MX866 491 LED66S/840 PSD DA20 WH	Yes
910500460236	4MX866 491 LED66S/840 PSD WB WH	Yes
910500460237	4MX866 491 LED55S/840 PSD DA20 WH C-2R	Yes
910500460238	4MX866 491 LED55S/840 PSD NB WH C-2R	Yes
910500460239	4MX866 491 LED66S/840 PSD DA20 WH C-2R	Yes
910500460240	4MX866 491 LED66S/840 PSD NB WH C-2R	Yes
910500460257	4MX883 491 LED55S/840 PSD DA20 WH	Yes
910500460258	4MX883 491 LED55S/840 PSD NB WH	Yes

Maxos LED

Order Code	Full Product Name	Dimmable
910500460259	4MX883 491 LED55S/840 PSD WB WH	Yes
910500460263	4MX883 491 LED66S/840 PSD DA20 WH	Yes
910500460264	4MX883 491 LED66S/840 PSD NB WH	Yes
910500460265	4MX883 491 LED66S/840 PSD WB WH	Yes
910500460266	4MX883 491 LED55S/840 PSD DA20 WH C-2R	Yes
910500460267	4MX883 491 LED55S/840 PSD NB WH C-2R	Yes
910500460268	4MX883 491 LED55S/840 PSD WB WH C-2R	Yes
910500460269	4MX883 491 LED66S/840 PSD DA20 WH C-2R	Yes
910500460270	4MX883 491 LED66S/840 PSD NB WH C-2R	Yes
910500460271	4MX883 491 LED66S/840 PSD WB WH C-2R	Yes
910500460391	4MX850 491 LED55S/840 PSD WB WH C-2R	Yes
910500460415	4MX850 491 LED66S/840 PSD VWB WH C-2R	Yes
910500460420	4MX850 491 LED40S/840 PSD WB WH C-2R	Yes
910500460485	4MX866 491 LED66S/840 PSD WB WH ELP1	Yes
910500460487	4MX883 491 LED66S/840 PSD WB WH ELP3	Yes
910500460489	4MX866 491 LED66S/840 PSD WB WH ELD1	Yes
910500460491	4MX883 491 LED66S/840 PSD WB WH ELD3	Yes
910500460537	4MX850 491 LED40S/840 PSD NB WH C-2R	Yes
910500460538	4MX850 491 LED55S/840 PSD NB WH C-2R	Yes
910500460562	4MX850 491 LED80S/840 PSD A20 WH C-2R	-
910629120026	4MX850 491 LED55S/830 PSD NB WH	Yes
910629120126	4MX850 491 LED55S/840 PSD NB WH	Yes
910629120226	4MX850 491 LED55S/830 PSD WB WH	Yes
910629120326	4MX850 491 LED55S/840 PSD WB WH	Yes
910629121626	4MX850 491 LED40S/830 PSD NB WH	Yes
910629121726	4MX850 491 LED40S/840 PSD NB WH	Yes
910629121826	4MX850 491 LED40S/830 PSD WB WH	Yes
910629121926	4MX850 491 LED40S/840 PSD WB WH	Yes
910629124826	4MX850 491 LED55S/830 PSD DA20 WH	Yes
910629124926	4MX850 491 LED55S/840 PSD DA20 WH	Yes
910629125626	4MX850 491 LED40S/830 PSD DA20 WH	Yes
910629125726	4MX850 491 LED40S/840 PSD DA20 WH	Yes
910629158026	4MX850 491 LED66S/840 PSD DA20 WH	Yes
910629158126	4MX850 491 LED66S/840 PSD WB WH	Yes
910629158226	4MX850 491 LED66S/840 PSD NB WH	Yes
910629160026	4MX850 491 LED66S/830 PSD DA20 WH	Yes
910629160126	4MX850 491 LED66S/830 PSD WB WH	Yes
910629160226	4MX850 491 LED66S/830 PSD NB WH	Yes
910629160526	4MX850 491 LED40S/840 PSD A20 WH	Yes
910629160626	4MX850 491 LED55S/840 PSD A20 WH	Yes

Order Code	Full Product Name	Dimmable
910629160726	4MX850 491 LED55S/830 PSD A20 WH	Yes
910629161026	4MX850 491 LED40S/830 PSD A20 WH	Yes
910629162126	4MX850 491 LED66S/840 PSD A20 WH	Yes
910629165926	4MX850 491 LED55S/840 PSD DA35 WH	Yes
910629166026	4MX850 491 LED66S/840 PSD DA35 WH	Yes
910629167426	4MX850 491 LED80S/840 PSD NB WH	Yes
910629167526	4MX850 491 LED80S/840 PSD WB WH	Yes
910629167626	4MX866 491 LED66S/840 PSD NB WH	Yes
910500460502	4MX850 491 LED80S/840 PSD WB SI	-
910629120826	4MX850 491 LED55S/830 PSD NB SI	Yes
910629120926	4MX850 491 LED55S/840 PSD NB SI	Yes
910629121026	4MX850 491 LED55S/830 PSD WB SI	Yes
910629121126	4MX850 491 LED55S/840 PSD WB SI	Yes
910629122426	4MX850 491 LED40S/830 PSD NB SI	Yes
910629122526	4MX850 491 LED40S/840 PSD NB SI	Yes
910629122626	4MX850 491 LED40S/830 PSD WB SI	Yes
910629122726	4MX850 491 LED40S/840 PSD WB SI	Yes
910629125226	4MX850 491 LED55S/830 PSD DA20 SI	Yes
910629125326	4MX850 491 LED55S/840 PSD DA20 SI	Yes
910629126026	4MX850 491 LED40S/830 PSD DA20 SI	Yes
910629126126	4MX850 491 LED40S/840 PSD DA20 SI	Yes
910629160826	4MX850 491 LED55S/830 PSD A20 SI	Yes
910629160926	4MX850 491 LED55S/840 PSD A20 SI	Yes
910629161126	4MX850 491 LED40S/830 PSD A20 SI	Yes
910629161226	4MX850 491 LED40S/840 PSD A20 SI	Yes
910629162226	4MX850 491 LED66S/840 PSD A20 SI	Yes
910629165626	4MX850 491 LED55S/840 PSD DA35 SI	Yes
910629121226	4MX850 581 LED55S/830 PSD NB SI	Yes
910629121326	4MX850 581 LED55S/840 PSD NB SI	Yes
910629121426	4MX850 581 LED55S/830 PSD WB SI	Yes
910629121526	4MX850 581 LED55S/840 PSD WB SI	Yes
910629122826	4MX850 581 LED40S/830 PSD NB SI	Yes
910629122926	4MX850 581 LED40S/840 PSD NB SI	Yes
910629123026	4MX850 581 LED40S/830 PSD WB SI	Yes
910629123126	4MX850 581 LED40S/840 PSD WB SI	Yes
910629125426	4MX850 581 LED55S/830 PSD DA20 SI	Yes
910629125526	4MX850 581 LED55S/840 PSD DA20 SI	Yes
910629126226	4MX850 581 LED40S/830 PSD DA20 SI	Yes
910629126326	4MX850 581 LED40S/840 PSD DA20 SI	Yes
910629165726	4MX850 581 LED55S/840 PSD DA35 SI	Yes

Operating and Electrical

Order Code	Full Product Name	Input Voltage
910500457964	4MX850 581 LED80S/840 PSD NB WH	220-240 V
910500457965	4MX850 581 LED80S/840 PSD WB WH	220-240 V
910500460003	4MX850 581 LED66S/840 PSD-CLO WB WH	220-240 V
910500460004	4MX850 581 LED80S/840 PSD-CLO WB WH	220-240 V
910500460007	4MX850 581 LED80S/840 PSD NB WH C-2R	220-240 V
910500460008	4MX850 581 LED80S/840 PSD WB WH C-2R	220-240 V
910500460009	4MX850 581 LED66S/840 PSD NB WH C-2R	220-240 V
910500460010	4MX850 581 LED66S/840 PSD WB WH C-2R	220-240 V

Order Code	Full Product Name	Input Voltage
910500460048	4MX850 581 LED80S/840 PSD VWB WH	220-240 V
910500460074	4MX866 581 LED66S/840 PSD WB WH	220-240 V
910500460222	4MX850 581 LED66S/840 PSD DA20 WH	220-240 V
910500460223	4MX850 581 LED80S/840 PSD DA20 WH	220-240 V
910500460224	4MX850 581 LED66S/840 PSD DA20 WH C-2R	220-240 V
910500460225	4MX850 581 LED80S/840 PSD DA20 WH C-2R	220-240 V
910500460226	4MX850 581 LED66S/840 PSD-CLO DA20 WH	220-240 V
910500460227	4MX850 581 LED80S/840 PSD-CLO DA20 WH	220-240 V

Order Code	Full Product Name	Input Voltage	Order Code	Full Product Name	Input Voltage
910500460243	4MX866 581 LED55S/840 PSD DA20 WH	220-240 V	910500460215	4MX850 491 LED80S/840 PSD DA20 WH	220-240 V
910500460244	4MX866 581 LED55S/840 PSD NB WH	220-240 V	910500460216	4MX850 491 LED66S/840 PSD DA20 WH C-2R	220-240 V
910500460245	4MX866 581 LED55S/840 PSD WB WH	220-240 V	910500460217	4MX850 491 LED66S/840 PSD NB WH C-2R	220-240 V
910500460249	4MX866 581 LED66S/840 PSD DA20 WH	220-240 V	910500460218	4MX850 491 LED66S/840 PSD WB WH C-2R	220-240 V
910500460250	4MX866 581 LED55S/840 PSD DA20 WH C-2R	220-240 V	910500460219	4MX850 491 LED80S/840 PSD DA20 WH C-2R	220-240 V
910500460251	4MX866 581 LED55S/840 PSD WB WH C-2R	220-240 V	910500460220	4MX850 491 LED80S/840 PSD NB WH C-2R	220-240 V
910500460252	4MX866 581 LED66S/840 PSD DA20 WH C-2R	220-240 V	910500460221	4MX850 491 LED80S/840 PSD WB WH C-2R	220-240 V
910500460253	4MX866 581 LED66S/840 PSD NB WH C-2R	220-240 V	910500460231	4MX866 491 LED55S/840 PSD DA20 WH	220-240 V
910500460273	4MX883 581 LED55S/840 PSD DA20 WH	220-240 V	910500460235	4MX866 491 LED66S/840 PSD DA20 WH	220-240 V
910500460274	4MX883 581 LED55S/840 PSD NB WH	220-240 V	910500460236	4MX866 491 LED66S/840 PSD WB WH	220-240 V
910500460275	4MX883 581 LED55S/840 PSD WB WH	220-240 V	910500460237	4MX866 491 LED55S/840 PSD DA20 WH C-2R	220-240 V
910500460279	4MX883 581 LED66S/840 PSD DA20 WH	220-240 V	910500460238	4MX866 491 LED55S/840 PSD NB WH C-2R	220-240 V
910500460280	4MX883 581 LED66S/840 PSD WB WH	220-240 V	910500460239	4MX866 491 LED66S/840 PSD DA20 WH C-2R	220-240 V
910500460281	4MX883 581 LED55S/840 PSD DA20 WH C-2R	220-240 V	910500460240	4MX866 491 LED66S/840 PSD NB WH C-2R	220-240 V
910500460282	4MX883 581 LED55S/840 PSD NB WH C-2R	220-240 V	910500460257	4MX883 491 LED55S/840 PSD DA20 WH	220-240 V
910500460283	4MX883 581 LED55S/840 PSD WB WH C-2R	220-240 V	910500460258	4MX883 491 LED55S/840 PSD NB WH	220-240 V
910500460284	4MX883 581 LED66S/840 PSD DA20 WH C-2R	220-240 V	910500460259	4MX883 491 LED55S/840 PSD WB WH	220-240 V
910500460285	4MX883 581 LED66S/840 PSD NB WH C-2R	220-240 V	910500460263	4MX883 491 LED66S/840 PSD DA20 WH	220-240 V
910500460393	4MX850 581 LED55S/840 PSD NB WH C-2R	220-240 V	910500460264	4MX883 491 LED66S/840 PSD NB WH	220-240 V
910500460486	4MX866 581 LED66S/840 PSD WB WH ELP1	220-240 V	910500460265	4MX883 491 LED66S/840 PSD WB WH	220-240 V
910500460488	4MX883 581 LED66S/840 PSD WB WH ELP3	220-240 V	910500460266	4MX883 491 LED55S/840 PSD DA20 WH C-2R	220-240 V
910500460490	4MX866 581 LED66S/840 PSD WB WH ELD1	220-240 V	910500460267	4MX883 491 LED55S/840 PSD NB WH C-2R	220-240 V
910500460492	4MX883 581 LED66S/840 PSD WB WH ELD3	220-240 V	910500460268	4MX883 491 LED55S/840 PSD WB WH C-2R	220-240 V
910500460595	4MX850 581 LED55S/840 PSD WB WH C-2R	220-240 V	910500460269	4MX883 491 LED66S/840 PSD DA20 WH C-2R	220-240 V
910629120426	4MX850 581 LED55S/830 PSD NB WH	220-240 V	910500460270	4MX883 491 LED66S/840 PSD NB WH C-2R	220-240 V
910629120526	4MX850 581 LED55S/840 PSD NB WH	220-240 V	910500460271	4MX883 491 LED66S/840 PSD WB WH C-2R	220-240 V
910629120626	4MX850 581 LED55S/830 PSD WB WH	220-240 V	910500460391	4MX850 491 LED55S/840 PSD WB WH C-2R	220-240 V
910629120726	4MX850 581 LED55S/840 PSD WB WH	220-240 V	910500460415	4MX850 491 LED66S/840 PSD VWB WH C-2R	220-240 V
910629122026	4MX850 581 LED40S/830 PSD NB WH	220-240 V	910500460420	4MX850 491 LED40S/840 PSD WB WH C-2R	220-240 V
910629122126	4MX850 581 LED40S/840 PSD NB WH	220-240 V	910500460485	4MX866 491 LED66S/840 PSD WB WH ELP1	220-240 V
910629122226	4MX850 581 LED40S/830 PSD WB WH	220-240 V	910500460487	4MX883 491 LED66S/840 PSD WB WH ELP3	220-240 V
910629122326	4MX850 581 LED40S/840 PSD WB WH	220-240 V	910500460489	4MX866 491 LED66S/840 PSD WB WH ELD1	220-240 V
910629125026	4MX850 581 LED55S/830 PSD DA20 WH	220-240 V	910500460491	4MX883 491 LED66S/840 PSD WB WH ELD3	220-240 V
910629125126	4MX850 581 LED55S/840 PSD DA20 WH	220-240 V	910500460537	4MX850 491 LED40S/840 PSD NB WH C-2R	220-240 V
910629125826	4MX850 581 LED40S/830 PSD DA20 WH	220-240 V	910500460538	4MX850 491 LED55S/840 PSD NB WH C-2R	220-240 V
910629125926	4MX850 581 LED40S/840 PSD DA20 WH	220-240 V	910500460562	4MX850 491 LED80S/840 PSD A20 WH C-2R	-
910629160326	4MX850 581 LED66S/840 PSD WB WH	220-240 V	910629120026	4MX850 491 LED55S/830 PSD NB WH	220-240 V
910629160426	4MX850 581 LED66S/840 PSD NB WH	220-240 V	910629120126	4MX850 491 LED55S/840 PSD NB WH	220-240 V
910629165226	4MX883 581 LED66S/840 PSD WB WH C-2R	220-240 V	910629120226	4MX850 491 LED55S/830 PSD WB WH	220-240 V
910629165326	4MX866 581 LED66S/840 PSD WB WH C-2R	220-240 V	910629120326	4MX850 491 LED55S/840 PSD WB WH	220-240 V
910629166126	4MX850 581 LED55S/840 PSD DA35 WH	220-240 V	910629121626	4MX850 491 LED40S/830 PSD NB WH	220-240 V
910500460013	4MX850 491 LED66S/840 PSD-CLO WB WH	220-240 V	910629121726	4MX850 491 LED40S/840 PSD NB WH	220-240 V
910500460014	4MX850 491 LED80S/840 PSD-CLO WB WH	220-240 V	910629121826	4MX850 491 LED40S/830 PSD WB WH	220-240 V
910500460016	4MX850 491 LED66S/840 PSD-CLO NB WH	220-240 V	910629121926	4MX850 491 LED40S/840 PSD WB WH	220-240 V
910500460017	4MX850 491 LED80S/840 PSD-CLO NB WH	220-240 V	910629124826	4MX850 491 LED55S/830 PSD DA20 WH	220-240 V
910500460023	4MX850 491 LED80S/840 PSD-CLO DA20 WH	220-240 V	910629124926	4MX850 491 LED55S/840 PSD DA20 WH	220-240 V
910500460041	4MX866 491 LED66S/840 PSD WB WH C-2R	220-240 V	910629125626	4MX850 491 LED40S/830 PSD DA20 WH	220-240 V
910500460049	4MX850 491 LED80S/840 PSD VWB WH	220-240 V	910629125726	4MX850 491 LED40S/840 PSD DA20 WH	220-240 V
910500460059	4MX866 491 LED55S/840 PSD WB WH	220-240 V	910629158026	4MX850 491 LED66S/840 PSD DA20 WH	220-240 V
910500460075	4MX850 491 LED80S/840 PSD VWB WH C-2R	220 to 240 V	910629158126	4MX850 491 LED66S/840 PSD WB WH	220-240 V
910500460080	4MX866 491 LED55S/840 PSD WB WH C-2R	220-240 V	910629158226	4MX850 491 LED66S/840 PSD NB WH	220-240 V
910500460093	4MX866 491 LED55S/840 PSD NB WH	220-240 V	910629160026	4MX850 491 LED66S/830 PSD DA20 WH	220-240 V

Order Code	Full Product Name	Input Voltage	Order Code	Full Product Name	Input Voltage
910629160126	4MX850 491 LED66S/830 PSD WB WH	220-240 V	910629125326	4MX850 491 LED55S/840 PSD DA20 SI	220-240 V
910629160226	4MX850 491 LED66S/830 PSD NB WH	220-240 V	910629126026	4MX850 491 LED40S/830 PSD DA20 SI	220-240 V
910629160526	4MX850 491 LED40S/840 PSD A20 WH	220-240 V	910629126126	4MX850 491 LED40S/840 PSD DA20 SI	220-240 V
910629160626	4MX850 491 LED55S/840 PSD A20 WH	220-240 V	910629160826	4MX850 491 LED55S/830 PSD A20 SI	220-240 V
910629160726	4MX850 491 LED55S/830 PSD A20 WH	220-240 V	910629160926	4MX850 491 LED55S/840 PSD A20 SI	220-240 V
910629161026	4MX850 491 LED40S/830 PSD A20 WH	220-240 V	910629161126	4MX850 491 LED40S/830 PSD A20 SI	220-240 V
910629162126	4MX850 491 LED66S/840 PSD A20 WH	220-240 V	910629161226	4MX850 491 LED40S/840 PSD A20 SI	220-240 V
910629165926	4MX850 491 LED55S/840 PSD DA35 WH	220-240 V	910629162226	4MX850 491 LED66S/840 PSD A20 SI	220-240 V
910629166026	4MX850 491 LED66S/840 PSD DA35 WH	220-240 V	910629165626	4MX850 491 LED55S/840 PSD DA35 SI	220-240 V
910629167426	4MX850 491 LED80S/840 PSD NB WH	220-240 V	910629121226	4MX850 581 LED55S/830 PSD NB SI	220-240 V
910629167526	4MX850 491 LED80S/840 PSD WB WH	220-240 V	910629121326	4MX850 581 LED55S/840 PSD NB SI	220-240 V
910629167626	4MX866 491 LED66S/840 PSD NB WH	220-240 V	910629121426	4MX850 581 LED55S/830 PSD WB SI	220-240 V
910500460502	4MX850 491 LED80S/840 PSD WB SI	-	910629121526	4MX850 581 LED55S/840 PSD WB SI	220-240 V
910629120826	4MX850 491 LED55S/830 PSD NB SI	220-240 V	910629122826	4MX850 581 LED40S/830 PSD NB SI	220-240 V
910629120926	4MX850 491 LED55S/840 PSD NB SI	220-240 V	910629122926	4MX850 581 LED40S/840 PSD NB SI	220-240 V
910629121026	4MX850 491 LED55S/830 PSD WB SI	220-240 V	910629123026	4MX850 581 LED40S/830 PSD WB SI	220-240 V
910629121126	4MX850 491 LED55S/840 PSD WB SI	220-240 V	910629123126	4MX850 581 LED40S/840 PSD WB SI	220-240 V
910629122426	4MX850 491 LED40S/830 PSD NB SI	220-240 V	910629125426	4MX850 581 LED55S/830 PSD DA20 SI	220-240 V
910629122526	4MX850 491 LED40S/840 PSD NB SI	220-240 V	910629125526	4MX850 581 LED55S/840 PSD DA20 SI	220-240 V
910629122626	4MX850 491 LED40S/830 PSD WB SI	220-240 V	910629126226	4MX850 581 LED40S/830 PSD DA20 SI	220-240 V
910629122726	4MX850 491 LED40S/840 PSD WB SI	220-240 V	910629126326	4MX850 581 LED40S/840 PSD DA20 SI	220-240 V
910629125226	4MX850 491 LED55S/830 PSD DA20 SI	220-240 V	910629165726	4MX850 581 LED55S/840 PSD DA35 SI	220-240 V

General Information (1/3)

Order Code	Full Product Name	Beam angle of light source	Cap-Base	CE mark	Protection class IEC	Optical cover/lens type	Driver included	Emergency lighting
910500457964	4MX850 581 LED80S/840 PSD NB WH	120 °	-	CE mark	Safety class I	Polymethyl methacrylate bowl/cover	Yes	-
910500457965	4MX850 581 LED80S/840 PSD WB WH	120 °	-	CE mark	Safety class I	Polymethyl methacrylate bowl/cover	Yes	-
910500460003	4MX850 581 LED66S/840 PSD-CLO WB WH	120 °	-	CE mark	Safety class I	Polymethyl methacrylate bowl/cover	Yes	-
910500460004	4MX850 581 LED80S/840 PSD-CLO WB WH	120 °	-	CE mark	Safety class I	Polymethyl methacrylate bowl/cover	Yes	-
910500460007	4MX850 581 LED80S/840 PSD NB WH C-2R	120 °	-	CE mark	Safety class I	Polymethyl methacrylate bowl/cover	Yes	-
910500460008	4MX850 581 LED80S/840 PSD WB WH C-2R	120 °	-	CE mark	Safety class I	Polymethyl methacrylate bowl/cover	Yes	-
910500460009	4MX850 581 LED66S/840 PSD NB WH C-2R	120 °	-	CE mark	Safety class I	Polymethyl methacrylate bowl/cover	Yes	-
910500460010	4MX850 581 LED66S/840 PSD WB WH C-2R	120 °	-	CE mark	Safety class I	Polymethyl methacrylate bowl/cover	Yes	-
910500460048	4MX850 581 LED80S/840 PSD VWB WH	120 °	-	CE mark	Safety class I	Polymethyl methacrylate bowl/cover	Yes	-
910500460074	4MX866 581 LED66S/840 PSD WB WH	120 °	-	CE mark	Safety class I	Polymethyl methacrylate bowl/cover	Yes	-
910500460222	4MX850 581 LED66S/840 PSD DA20 WH	120 °	-	CE mark	Safety class I	Polymethyl methacrylate bowl/cover	Yes	-
910500460223	4MX850 581 LED80S/840 PSD DA20 WH	120 °	-	CE mark	Safety class I	Polymethyl methacrylate bowl/cover	Yes	-

Order Code	Full Product Name	Beam angle of light source	Cap-Base	CE mark	Protection class IEC	Optical cover/lens type	Driver included	Emergency lighting
910500460224	4MX850 581 LED66S/840 PSD DA20 WH C-2R	120 °	-	CE mark	Safety class I	Polymethyl methacrylate bowl/cover	Yes	-
910500460225	4MX850 581 LED80S/840 PSD DA20 WH C-2R	120 °	-	CE mark	Safety class I	Polymethyl methacrylate bowl/cover	Yes	-
910500460226	4MX850 581 LED66S/840 PSD-CLO DA20 WH	120 °	-	CE mark	Safety class I	Polymethyl methacrylate bowl/cover	Yes	-
910500460227	4MX850 581 LED80S/840 PSD-CLO DA20 WH	120 °	-	CE mark	Safety class I	Polymethyl methacrylate bowl/cover	Yes	-
910500460243	4MX866 581 LED55S/840 PSD DA20 WH	120 °	-	CE mark	Safety class I	Polymethyl methacrylate bowl/cover	Yes	-
910500460244	4MX866 581 LED55S/840 PSD NB WH	120 °	-	CE mark	Safety class I	Polymethyl methacrylate bowl/cover	Yes	-
910500460245	4MX866 581 LED55S/840 PSD WB WH	120 °	-	CE mark	Safety class I	Polymethyl methacrylate bowl/cover	Yes	-
910500460249	4MX866 581 LED66S/840 PSD DA20 WH	120 °	-	CE mark	Safety class I	Polymethyl methacrylate bowl/cover	Yes	-
910500460250	4MX866 581 LED55S/840 PSD DA20 WH C-2R	120 °	-	CE mark	Safety class I	Polymethyl methacrylate bowl/cover	Yes	-
910500460251	4MX866 581 LED55S/840 PSD WB WH C-2R	120 °	-	CE mark	Safety class I	Polymethyl methacrylate bowl/cover	Yes	-
910500460252	4MX866 581 LED66S/840 PSD DA20 WH C-2R	120 °	-	CE mark	Safety class I	Polymethyl methacrylate bowl/cover	Yes	-
910500460253	4MX866 581 LED66S/840 PSD NB WH C-2R	120 °	-	CE mark	Safety class I	Polymethyl methacrylate bowl/cover	Yes	-
910500460273	4MX883 581 LED55S/840 PSD DA20 WH	120 °	-	CE mark	Safety class I	Polymethyl methacrylate bowl/cover	Yes	-
910500460274	4MX883 581 LED55S/840 PSD NB WH	120 °	-	CE mark	Safety class I	Polymethyl methacrylate bowl/cover	Yes	-
910500460275	4MX883 581 LED55S/840 PSD WB WH	120 °	-	CE mark	Safety class I	Polymethyl methacrylate bowl/cover	Yes	-
910500460279	4MX883 581 LED66S/840 PSD DA20 WH	120 °	-	CE mark	Safety class I	Polymethyl methacrylate bowl/cover	Yes	-
910500460280	4MX883 581 LED66S/840 PSD WB WH	120 °	-	CE mark	Safety class I	Polymethyl methacrylate bowl/cover	Yes	-
910500460281	4MX883 581 LED55S/840 PSD DA20 WH C-2R	120 °	-	CE mark	Safety class I	Polymethyl methacrylate bowl/cover	Yes	-
910500460282	4MX883 581 LED55S/840 PSD NB WH C-2R	120 °	-	CE mark	Safety class I	Polymethyl methacrylate bowl/cover	Yes	-
910500460283	4MX883 581 LED55S/840 PSD WB WH C-2R	120 °	-	CE mark	Safety class I	Polymethyl methacrylate bowl/cover	Yes	-
910500460284	4MX883 581 LED66S/840 PSD DA20 WH C-2R	120 °	-	CE mark	Safety class I	Polymethyl methacrylate bowl/cover	Yes	-
910500460285	4MX883 581 LED66S/840 PSD NB WH C-2R	120 °	-	CE mark	Safety class I	Polymethyl methacrylate bowl/cover	Yes	-
910500460393	4MX850 581 LED55S/840 PSD NB WH C-2R	120 °	-	CE mark	Safety class I	-	Yes	-
910500460486	4MX866 581 LED66S/840 PSD WB WH ELP1	120 °	-	CE mark	Safety class I	-	Yes	-
910500460488	4MX883 581 LED66S/840 PSD WB WH ELP3	120 °	-	CE mark	Safety class I	-	Yes	-

Maxos LED

Order Code	Full Product Name	Beam angle of light source	Cap-Base	CE mark	Protection class IEC	Optical cover/lens type	Driver included	Emergency lighting
910500460490	4MX866 581 LED66S/840 PSD WB WH ELD1	120 °	-	CE mark	Safety class I	-	Yes	-
910500460492	4MX883 581 LED66S/840 PSD WB WH ELD3	120 °	-	CE mark	Safety class I	-	Yes	-
910500460595	4MX850 581 LED55S/840 PSD WB WH C-2R	120 °	-	CE mark	Safety class I	-	Yes	-
910629120426	4MX850 581 LED55S/830 PSD NB WH	120 °	-	CE mark	Safety class I	Polymethyl methacrylate bowl/cover	Yes	-
910629120526	4MX850 581 LED55S/840 PSD NB WH	120 °	-	CE mark	Safety class I	Polymethyl methacrylate bowl/cover	Yes	-
910629120626	4MX850 581 LED55S/830 PSD WB WH	120 °	-	CE mark	Safety class I	Polymethyl methacrylate bowl/cover	Yes	-
910629120726	4MX850 581 LED55S/840 PSD WB WH	120 °	-	CE mark	Safety class I	Polymethyl methacrylate bowl/cover	Yes	-
910629122026	4MX850 581 LED40S/830 PSD NB WH	120 °	-	CE mark	Safety class I	Polymethyl methacrylate bowl/cover	Yes	-
910629122126	4MX850 581 LED40S/840 PSD NB WH	120 °	-	CE mark	Safety class I	Polymethyl methacrylate bowl/cover	Yes	-
910629122226	4MX850 581 LED40S/830 PSD WB WH	120 °	-	CE mark	Safety class I	Polymethyl methacrylate bowl/cover	Yes	-
910629122326	4MX850 581 LED40S/840 PSD WB WH	120 °	-	CE mark	Safety class I	Polymethyl methacrylate bowl/cover	Yes	-
910629125026	4MX850 581 LED55S/830 PSD DA20 WH	120 °	-	CE mark	Safety class I	Polymethyl methacrylate bowl/cover	Yes	-
910629125126	4MX850 581 LED55S/840 PSD DA20 WH	120 °	-	CE mark	Safety class I	Polymethyl methacrylate bowl/cover	Yes	-
910629125826	4MX850 581 LED40S/830 PSD DA20 WH	120 °	-	CE mark	Safety class I	Polymethyl methacrylate bowl/cover	Yes	-
910629125926	4MX850 581 LED40S/840 PSD DA20 WH	120 °	-	CE mark	Safety class I	Polymethyl methacrylate bowl/cover	Yes	-
910629160326	4MX850 581 LED66S/840 PSD WB WH	120 °	-	CE mark	Safety class I	Polymethyl methacrylate bowl/cover	Yes	-
910629160426	4MX850 581 LED66S/840 PSD NB WH	120 °	-	CE mark	Safety class I	Polymethyl methacrylate bowl/cover	Yes	-
910629165226	4MX883 581 LED66S/840 PSD WB WH C-2R	120 °	-	CE mark	Safety class I	Polymethyl methacrylate bowl/cover	Yes	-
910629165326	4MX866 581 LED66S/840 PSD WB WH C-2R	120 °	-	CE mark	Safety class I	Polymethyl methacrylate bowl/cover	Yes	-
910629166126	4MX850 581 LED55S/840 PSD DA35 WH	120 °	-	CE mark	Safety class I	Polymethyl methacrylate bowl/cover	Yes	-
910500460013	4MX850 491 LED66S/840 PSD-CLO WB WH	120 °	-	CE mark	Safety class I	Polymethyl methacrylate bowl/cover	Yes	-
910500460014	4MX850 491 LED80S/840 PSD-CLO WB WH	120 °	-	CE mark	Safety class I	Polymethyl methacrylate bowl/cover	Yes	-
910500460016	4MX850 491 LED66S/840 PSD-CLO NB WH	120 °	-	CE mark	Safety class I	Polymethyl methacrylate bowl/cover	Yes	-
910500460017	4MX850 491 LED80S/840 PSD-CLO NB WH	120 °	-	CE mark	Safety class I	Polymethyl methacrylate bowl/cover	Yes	-
910500460023	4MX850 491 LED80S/840 PSD-CLO DA20 WH	120 °	-	CE mark	Safety class I	Polymethyl methacrylate bowl/cover	Yes	-

Order Code	Full Product Name	Beam angle of light source	Cap-Base	CE mark	Protection class IEC	Optical cover/lens type	Driver included	Emergency lighting
910500460041	4MX866 491 LED66S/840 PSD WB WH C-2R	120 °	-	CE mark	Safety class I	Polymethyl methacrylate bowl/cover	Yes	-
910500460049	4MX850 491 LED80S/840 PSD VWB WH	120 °	-	CE mark	Safety class I	Polymethyl methacrylate bowl/cover	Yes	-
910500460059	4MX866 491 LED55S/840 PSD WB WH	120 °	-	CE mark	Safety class I	Polymethyl methacrylate bowl/cover	Yes	-
910500460075	4MX850 491 LED80S/840 PSD VWB WH C-2R	120 °	-	CE mark	Safety class I	-	Yes	-
910500460080	4MX866 491 LED55S/840 PSD WB WH C-2R	120 °	-	CE mark	Safety class I	Polymethyl methacrylate bowl/cover	Yes	-
910500460093	4MX866 491 LED55S/840 PSD NB WH	120 °	-	CE mark	Safety class I	Polymethyl methacrylate bowl/cover	Yes	-
910500460215	4MX850 491 LED80S/840 PSD DA20 WH	120 °	-	CE mark	Safety class I	Polymethyl methacrylate bowl/cover	Yes	-
910500460216	4MX850 491 LED66S/840 PSD DA20 WH C-2R	120 °	-	CE mark	Safety class I	Polymethyl methacrylate bowl/cover	Yes	-
910500460217	4MX850 491 LED66S/840 PSD NB WH C-2R	120 °	-	CE mark	Safety class I	Polymethyl methacrylate bowl/cover	Yes	-
910500460218	4MX850 491 LED66S/840 PSD WB WH C-2R	120 °	-	CE mark	Safety class I	Polymethyl methacrylate bowl/cover	Yes	-
910500460219	4MX850 491 LED80S/840 PSD DA20 WH C-2R	120 °	-	CE mark	Safety class I	Polymethyl methacrylate bowl/cover	Yes	-
910500460220	4MX850 491 LED80S/840 PSD NB WH C-2R	120 °	-	CE mark	Safety class I	Polymethyl methacrylate bowl/cover	Yes	-
910500460221	4MX850 491 LED80S/840 PSD WB WH C-2R	120 °	-	CE mark	Safety class I	Polymethyl methacrylate bowl/cover	Yes	-
910500460231	4MX866 491 LED55S/840 PSD DA20 WH	120 °	-	CE mark	Safety class I	Polymethyl methacrylate bowl/cover	Yes	-
910500460235	4MX866 491 LED66S/840 PSD DA20 WH	120 °	-	CE mark	Safety class I	Polymethyl methacrylate bowl/cover	Yes	-
910500460236	4MX866 491 LED66S/840 PSD WB WH	120 °	-	CE mark	Safety class I	Polymethyl methacrylate bowl/cover	Yes	-
910500460237	4MX866 491 LED55S/840 PSD DA20 WH C-2R	120 °	-	CE mark	Safety class I	Polymethyl methacrylate bowl/cover	Yes	-
910500460238	4MX866 491 LED55S/840 PSD NB WH C-2R	120 °	-	CE mark	Safety class I	Polymethyl methacrylate bowl/cover	Yes	-
910500460239	4MX866 491 LED66S/840 PSD DA20 WH C-2R	120 °	-	CE mark	Safety class I	Polymethyl methacrylate bowl/cover	Yes	-
910500460240	4MX866 491 LED66S/840 PSD NB WH C-2R	120 °	-	CE mark	Safety class I	Polymethyl methacrylate bowl/cover	Yes	-
910500460257	4MX883 491 LED55S/840 PSD DA20 WH	120 °	-	CE mark	Safety class I	Polymethyl methacrylate bowl/cover	Yes	-
910500460258	4MX883 491 LED55S/840 PSD NB WH	120 °	-	CE mark	Safety class I	Polymethyl methacrylate bowl/cover	Yes	-
910500460259	4MX883 491 LED55S/840 PSD WB WH	120 °	-	CE mark	Safety class I	Polymethyl methacrylate bowl/cover	Yes	-
910500460263	4MX883 491 LED66S/840 PSD DA20 WH	120 °	-	CE mark	Safety class I	Polymethyl methacrylate bowl/cover	Yes	-
910500460264	4MX883 491 LED66S/840 PSD NB WH	120 °	-	CE mark	Safety class I	Polymethyl methacrylate bowl/cover	Yes	-

Order Code	Full Product Name	Beam angle of light source	Cap-Base	CE mark	Protection class IEC	Optical cover/lens type	Driver included	Emergency lighting
910500460265	4MX883 491 LED66S/840 PSD WB WH	120 °	-	CE mark	Safety class I	Polymethyl methacrylate bowl/cover	Yes	-
910500460266	4MX883 491 LED55S/840 PSD DA20 WH C-2R	120 °	-	CE mark	Safety class I	Polymethyl methacrylate bowl/cover	Yes	-
910500460267	4MX883 491 LED55S/840 PSD NB WH C-2R	120 °	-	CE mark	Safety class I	Polymethyl methacrylate bowl/cover	Yes	-
910500460268	4MX883 491 LED55S/840 PSD WB WH C-2R	120 °	-	CE mark	Safety class I	Polymethyl methacrylate bowl/cover	Yes	-
910500460269	4MX883 491 LED66S/840 PSD DA20 WH C-2R	120 °	-	CE mark	Safety class I	Polymethyl methacrylate bowl/cover	Yes	-
910500460270	4MX883 491 LED66S/840 PSD NB WH C-2R	120 °	-	CE mark	Safety class I	Polymethyl methacrylate bowl/cover	Yes	-
910500460271	4MX883 491 LED66S/840 PSD WB WH C-2R	120 °	-	CE mark	Safety class I	Polymethyl methacrylate bowl/cover	Yes	-
910500460391	4MX850 491 LED55S/840 PSD WB WH C-2R	120 °	-	CE mark	Safety class I	-	Yes	-
910500460415	4MX850 491 LED66S/840 PSD VWB WH C-2R	120 °	-	CE mark	Safety class I	-	Yes	-
910500460420	4MX850 491 LED40S/840 PSD WB WH C-2R	120 °	-	CE mark	Safety class I	-	Yes	-
910500460485	4MX866 491 LED66S/840 PSD WB WH ELP1	120 °	-	CE mark	Safety class I	-	Yes	-
910500460487	4MX883 491 LED66S/840 PSD WB WH ELP3	120 °	-	CE mark	Safety class I	-	Yes	-
910500460489	4MX866 491 LED66S/840 PSD WB WH ELD1	120 °	-	CE mark	Safety class I	-	Yes	-
910500460491	4MX883 491 LED66S/840 PSD WB WH ELD3	120 °	-	CE mark	Safety class I	-	Yes	-
910500460537	4MX850 491 LED40S/840 PSD NB WH C-2R	120 °	-	CE mark	Safety class I	-	Yes	-
910500460538	4MX850 491 LED55S/840 PSD NB WH C-2R	120 °	-	CE mark	Safety class I	-	Yes	-
910500460562	4MX850 491 LED80S/840 PSD A20 WH C-2R	-	-	-	-	-	-	-
910629120026	4MX850 491 LED55S/830 PSD NB WH	120 °	-	CE mark	Safety class I	Polymethyl methacrylate bowl/cover	Yes	-
910629120126	4MX850 491 LED55S/840 PSD NB WH	120 °	-	CE mark	Safety class I	Polymethyl methacrylate bowl/cover	Yes	-
910629120226	4MX850 491 LED55S/830 PSD WB WH	120 °	-	CE mark	Safety class I	Polymethyl methacrylate bowl/cover	Yes	-
910629120326	4MX850 491 LED55S/840 PSD WB WH	120 °	-	CE mark	Safety class I	Polymethyl methacrylate bowl/cover	Yes	-
910629121626	4MX850 491 LED40S/830 PSD NB WH	120 °	-	CE mark	Safety class I	Polymethyl methacrylate bowl/cover	Yes	-
910629121726	4MX850 491 LED40S/840 PSD NB WH	120 °	-	CE mark	Safety class I	Polymethyl methacrylate bowl/cover	Yes	-
910629121826	4MX850 491 LED40S/830 PSD WB WH	120 °	-	CE mark	Safety class I	Polymethyl methacrylate bowl/cover	Yes	-
910629121926	4MX850 491 LED40S/840 PSD WB WH	120 °	-	CE mark	Safety class I	Polymethyl methacrylate bowl/cover	Yes	-

Maxos LED

Order Code	Full Product Name	Beam angle of light source	Cap-Base	CE mark	Protection class IEC	Optical cover/lens type	Driver included	Emergency lighting
910629124826	4MX850 491 LED55S/830 PSD DA20 WH	120 °	-	CE mark	Safety class I	Polymethyl methacrylate bowl/cover	Yes	-
910629124926	4MX850 491 LED55S/840 PSD DA20 WH	120 °	-	CE mark	Safety class I	Polymethyl methacrylate bowl/cover	Yes	-
910629125626	4MX850 491 LED40S/830 PSD DA20 WH	120 °	-	CE mark	Safety class I	Polymethyl methacrylate bowl/cover	Yes	-
910629125726	4MX850 491 LED40S/840 PSD DA20 WH	120 °	-	CE mark	Safety class I	Polymethyl methacrylate bowl/cover	Yes	-
910629158026	4MX850 491 LED66S/840 PSD DA20 WH	120 °	-	CE mark	Safety class I	Polymethyl methacrylate bowl/cover	Yes	-
910629158126	4MX850 491 LED66S/840 PSD WB WH	120 °	-	CE mark	Safety class I	Polymethyl methacrylate bowl/cover	Yes	-
910629158226	4MX850 491 LED66S/840 PSD NB WH	120 °	-	CE mark	Safety class I	Polymethyl methacrylate bowl/cover	Yes	-
910629160026	4MX850 491 LED66S/830 PSD DA20 WH	120 °	-	CE mark	Safety class I	Polymethyl methacrylate bowl/cover	Yes	-
910629160126	4MX850 491 LED66S/830 PSD WB WH	120 °	-	CE mark	Safety class I	Polymethyl methacrylate bowl/cover	Yes	-
910629160226	4MX850 491 LED66S/830 PSD NB WH	120 °	-	CE mark	Safety class I	Polymethyl methacrylate bowl/cover	Yes	-
910629160526	4MX850 491 LED40S/840 PSD A20 WH	120 °	-	CE mark	Safety class I	Polymethyl methacrylate bowl/cover	Yes	-
910629160626	4MX850 491 LED55S/840 PSD A20 WH	120 °	-	CE mark	Safety class I	Polymethyl methacrylate bowl/cover	Yes	-
910629160726	4MX850 491 LED55S/830 PSD A20 WH	120 °	-	CE mark	Safety class I	Polymethyl methacrylate bowl/cover	Yes	-
910629161026	4MX850 491 LED40S/830 PSD A20 WH	120 °	-	CE mark	Safety class I	Polymethyl methacrylate bowl/cover	Yes	-
910629162126	4MX850 491 LED66S/840 PSD A20 WH	120 °	-	CE mark	Safety class I	Polymethyl methacrylate bowl/cover	Yes	-
910629165926	4MX850 491 LED55S/840 PSD DA35 WH	120 °	-	CE mark	Safety class I	Polymethyl methacrylate bowl/cover	Yes	-
910629166026	4MX850 491 LED66S/840 PSD DA35 WH	120 °	-	CE mark	Safety class I	Polymethyl methacrylate bowl/cover	Yes	-
910629167426	4MX850 491 LED80S/840 PSD NB WH	120 °	-	CE mark	Safety class I	Polymethyl methacrylate bowl/cover	Yes	-
910629167526	4MX850 491 LED80S/840 PSD WB WH	120 °	-	CE mark	Safety class I	Polymethyl methacrylate bowl/cover	Yes	-
910629167626	4MX866 491 LED66S/840 PSD NB WH	120 °	-	CE mark	Safety class I	Polymethyl methacrylate bowl/cover	Yes	Emergency lighting 1 hour duration
910500460502	4MX850 491 LED80S/840 PSD WB SI	-	-	-	-	-	-	-
910629120826	4MX850 491 LED55S/830 PSD NB SI	120 °	-	CE mark	Safety class I	Polymethyl methacrylate bowl/cover	Yes	-
910629120926	4MX850 491 LED55S/840 PSD NB SI	120 °	-	CE mark	Safety class I	Polymethyl methacrylate bowl/cover	Yes	-
910629121026	4MX850 491 LED55S/830 PSD WB SI	120 °	-	CE mark	Safety class I	Polymethyl methacrylate bowl/cover	Yes	-
910629121126	4MX850 491 LED55S/840 PSD WB SI	120 °	-	CE mark	Safety class I	Polymethyl methacrylate bowl/cover	Yes	-

Maxos LED

Order Code	Full Product Name	Beam angle of light source	Cap-Base	CE mark	Protection class IEC	Optical cover/lens type	Driver included	Emergency lighting
910629122426	4MX850 491 LED40S/830 PSD NB SI	120 °	-	CE mark	Safety class I	Polymethyl methacrylate bowl/cover	Yes	-
910629122526	4MX850 491 LED40S/840 PSD NB SI	120 °	-	CE mark	Safety class I	Polymethyl methacrylate bowl/cover	Yes	-
910629122626	4MX850 491 LED40S/830 PSD WB SI	120 °	-	CE mark	Safety class I	Polymethyl methacrylate bowl/cover	Yes	-
910629122726	4MX850 491 LED40S/840 PSD WB SI	120 °	-	CE mark	Safety class I	Polymethyl methacrylate bowl/cover	Yes	-
910629125226	4MX850 491 LED55S/830 PSD DA20 SI	120 °	-	CE mark	Safety class I	Polymethyl methacrylate bowl/cover	Yes	-
910629125326	4MX850 491 LED55S/840 PSD DA20 SI	120 °	-	CE mark	Safety class I	Polymethyl methacrylate bowl/cover	Yes	-
910629126026	4MX850 491 LED40S/830 PSD DA20 SI	120 °	-	CE mark	Safety class I	Polymethyl methacrylate bowl/cover	Yes	-
910629126126	4MX850 491 LED40S/840 PSD DA20 SI	120 °	-	CE mark	Safety class I	Polymethyl methacrylate bowl/cover	Yes	-
910629160826	4MX850 491 LED55S/830 PSD A20 SI	120 °	-	CE mark	Safety class I	Polymethyl methacrylate bowl/cover	Yes	-
910629160926	4MX850 491 LED55S/840 PSD A20 SI	120 °	-	CE mark	Safety class I	Polymethyl methacrylate bowl/cover	Yes	-
910629161126	4MX850 491 LED40S/830 PSD A20 SI	120 °	-	CE mark	Safety class I	Polymethyl methacrylate bowl/cover	Yes	-
910629161226	4MX850 491 LED40S/840 PSD A20 SI	120 °	-	CE mark	Safety class I	Polymethyl methacrylate bowl/cover	Yes	-
910629162226	4MX850 491 LED66S/840 PSD A20 SI	120 °	-	CE mark	Safety class I	Polymethyl methacrylate bowl/cover	Yes	-
910629165626	4MX850 491 LED55S/840 PSD DA35 SI	120 °	-	CE mark	Safety class I	Polymethyl methacrylate bowl/cover	Yes	-
910629121226	4MX850 581 LED55S/830 PSD NB SI	120 °	-	CE mark	Safety class I	Polymethyl methacrylate bowl/cover	Yes	-
910629121326	4MX850 581 LED55S/840 PSD NB SI	120 °	-	CE mark	Safety class I	Polymethyl methacrylate bowl/cover	Yes	-
910629121426	4MX850 581 LED55S/830 PSD WB SI	120 °	-	CE mark	Safety class I	Polymethyl methacrylate bowl/cover	Yes	-
910629121526	4MX850 581 LED55S/840 PSD WB SI	120 °	-	CE mark	Safety class I	Polymethyl methacrylate bowl/cover	Yes	-
910629122826	4MX850 581 LED40S/830 PSD NB SI	120 °	-	CE mark	Safety class I	Polymethyl methacrylate bowl/cover	Yes	-
910629122926	4MX850 581 LED40S/840 PSD NB SI	120 °	-	CE mark	Safety class I	Polymethyl methacrylate bowl/cover	Yes	-
910629123026	4MX850 581 LED40S/830 PSD WB SI	120 °	-	CE mark	Safety class I	Polymethyl methacrylate bowl/cover	Yes	-
910629123126	4MX850 581 LED40S/840 PSD WB SI	120 °	-	CE mark	Safety class I	Polymethyl methacrylate bowl/cover	Yes	-
910629125426	4MX850 581 LED55S/830 PSD DA20 SI	120 °	-	CE mark	Safety class I	Polymethyl methacrylate bowl/cover	Yes	-
910629125526	4MX850 581 LED55S/840 PSD DA20 SI	120 °	-	CE mark	Safety class I	Polymethyl methacrylate bowl/cover	Yes	-
910629126226	4MX850 581 LED40S/830 PSD DA20 SI	120 °	-	CE mark	Safety class I	Polymethyl methacrylate bowl/cover	Yes	-

Order Code	Full Product Name	Beam angle of light source	Cap-Base	CE mark	Protection class IEC	Optical cover/lens type	Driver included	Emergency lighting
910629126326	4MX850 581 LED40S/840 PSD DA20 SI	120 °	-	CE mark	Safety class I	Polymethyl methacrylate bowl/cover	Yes	-
910629165726	4MX850 581 LED55S/840 PSD DA35 SI	120 °	-	CE mark	Safety class I	Polymethyl methacrylate bowl/cover	Yes	-

General Information (2/3)

Order Code	Full Product Name	ENEC mark	Flammability mark	Gear	Glow-wire test	Lamp family code	Embedded control	Light source replaceable	Number of gear units	Number of light sources
910500457964	4MX850 581 LED80S/840 PSD NB WH	ENEC mark	For mounting on easily flammable surfaces	-	Temperature 650 °C, duration 30 s	LED80S	-	No	1 unit	1 pc
910500457965	4MX850 581 LED80S/840 PSD WB WH	ENEC mark	For mounting on easily flammable surfaces	-	Temperature 650 °C, duration 30 s	LED80S	-	No	1 unit	1 pc
910500460003	4MX850 581 LED66S/840 PSD-CLO WB WH	ENEC mark	For mounting on easily flammable surfaces	-	Temperature 650 °C, duration 30 s	LED66S	Constant light output	No	1 unit	1 pc
910500460004	4MX850 581 LED80S/840 PSD-CLO WB WH	ENEC mark	For mounting on easily flammable surfaces	-	Temperature 650 °C, duration 30 s	LED80S	Constant light output	No	1 unit	1 pc
910500460007	4MX850 581 LED80S/840 PSD NB WH C-2R	ENEC mark	For mounting on easily flammable surfaces	-	Temperature 650 °C, duration 30 s	LED80S	-	No	1 unit	1 pc
910500460008	4MX850 581 LED80S/840 PSD WB WH C-2R	ENEC mark	For mounting on easily flammable surfaces	-	Temperature 650 °C, duration 30 s	LED80S	-	No	1 unit	1 pc
910500460009	4MX850 581 LED66S/840 PSD NB WH C-2R	ENEC mark	For mounting on easily flammable surfaces	-	Temperature 650 °C, duration 30 s	LED66S	-	No	1 unit	1 pc
910500460010	4MX850 581 LED66S/840 PSD WB WH C-2R	ENEC mark	For mounting on easily flammable surfaces	-	Temperature 650 °C, duration 30 s	LED66S	-	No	1 unit	1 pc
910500460048	4MX850 581 LED80S/840 PSD VWB WH	ENEC mark	For mounting on easily flammable surfaces	-	Temperature 650 °C, duration 30 s	LED80S	-	No	1 unit	1 pc
910500460074	4MX866 581 LED66S/840 PSD WB WH	ENEC mark	For mounting on easily flammable surfaces	-	Temperature 650 °C, duration 30 s	LED66S	-	No	1 unit	1 pc
910500460222	4MX850 581 LED66S/840 PSD DA20 WH	ENEC mark	For mounting on easily flammable surfaces	-	Temperature 650 °C, duration 30 s	LED66S	-	No	1 unit	1 pc
910500460223	4MX850 581 LED80S/840 PSD DA20 WH	ENEC mark	For mounting on easily flammable surfaces	-	Temperature 650 °C, duration 30 s	LED80S	-	No	1 unit	1 pc
910500460224	4MX850 581 LED66S/840 PSD DA20 WH C-2R	ENEC mark	For mounting on easily flammable surfaces	-	Temperature 650 °C, duration 30 s	LED66S	-	No	1 unit	1 pc

Order Code	Full Product Name	ENEC mark	Flammability mark	Gear	Glow-wire test	Lamp family code	Embedded control	Light source replaceable	Number of gear units	Number of light sources
910500460225	4MX850 581 LED80S/840 PSD DA20 WH C-2R	ENEC mark	For mounting on easily flammable surfaces	-	Temperature 650 °C, duration 30 s	LED80S	-	No	1 unit	1 pc
910500460226	4MX850 581 LED66S/840 PSD-CLO DA20 WH	ENEC mark	For mounting on easily flammable surfaces	-	Temperature 650 °C, duration 30 s	LED66S	-	No	1 unit	1 pc
910500460227	4MX850 581 LED80S/840 PSD-CLO DA20 WH	ENEC mark	For mounting on easily flammable surfaces	-	Temperature 650 °C, duration 30 s	LED80S	-	No	1 unit	1 pc
910500460243	4MX866 581 LED55S/840 PSD DA20 WH	ENEC mark	For mounting on easily flammable surfaces	-	Temperature 650 °C, duration 30 s	LED55S	-	No	1 unit	1 pc
910500460244	4MX866 581 LED55S/840 PSD NB WH	ENEC mark	For mounting on easily flammable surfaces	-	Temperature 650 °C, duration 30 s	LED55S	-	No	1 unit	1 pc
910500460245	4MX866 581 LED55S/840 PSD WB WH	ENEC mark	For mounting on easily flammable surfaces	-	Temperature 650 °C, duration 30 s	LED55S	-	No	1 unit	1 pc
910500460249	4MX866 581 LED66S/840 PSD DA20 WH	ENEC mark	For mounting on easily flammable surfaces	-	Temperature 650 °C, duration 30 s	LED66S	-	No	1 unit	1 pc
910500460250	4MX866 581 LED55S/840 PSD DA20 WH C-2R	ENEC mark	For mounting on easily flammable surfaces	-	Temperature 650 °C, duration 30 s	LED55S	-	No	1 unit	1 pc
910500460251	4MX866 581 LED55S/840 PSD WB WH C-2R	ENEC mark	For mounting on easily flammable surfaces	-	Temperature 650 °C, duration 30 s	LED55S	-	No	1 unit	1 pc
910500460252	4MX866 581 LED66S/840 PSD DA20 WH C-2R	ENEC mark	For mounting on easily flammable surfaces	-	Temperature 650 °C, duration 30 s	LED66S	-	No	1 unit	1 pc
910500460253	4MX866 581 LED66S/840 PSD NB WH C-2R	ENEC mark	For mounting on easily flammable surfaces	-	Temperature 650 °C, duration 30 s	LED66S	-	No	1 unit	1 pc
910500460273	4MX883 581 LED55S/840 PSD DA20 WH	ENEC mark	For mounting on easily flammable surfaces	-	Temperature 650 °C, duration 30 s	LED55S	-	No	1 unit	1 pc
910500460274	4MX883 581 LED55S/840 PSD NB WH	ENEC mark	For mounting on easily flammable surfaces	-	Temperature 650 °C, duration 30 s	LED55S	-	No	1 unit	1 pc
910500460275	4MX883 581 LED55S/840 PSD WB WH	ENEC mark	For mounting on easily flammable surfaces	-	Temperature 650 °C, duration 30 s	LED55S	-	No	1 unit	1 pc
910500460279	4MX883 581 LED66S/840 PSD DA20 WH	ENEC mark	For mounting on easily flammable surfaces	-	Temperature 650 °C, duration 30 s	LED66S	-	No	1 unit	1 pc
910500460280	4MX883 581 LED66S/840 PSD WB WH	ENEC mark	For mounting on easily flammable surfaces	-	Temperature 650 °C, duration 30 s	LED66S	-	No	1 unit	1 pc

Order Code	Full Product Name	ENEC mark	Flammability mark	Gear	Glow-wire test	Lamp family code	Embedded control	Light source replaceable	Number of gear units	Number of light sources
910500460281	4MX883 581 LED55S/840 PSD DA20 WH C-2R	ENEC mark	For mounting on easily flammable surfaces	-	Temperature 650 °C, duration 30 s	LED55S	-	No	1 unit	1 pc
910500460282	4MX883 581 LED55S/840 PSD NB WH C-2R	ENEC mark	For mounting on easily flammable surfaces	-	Temperature 650 °C, duration 30 s	LED55S	-	No	1 unit	1 pc
910500460283	4MX883 581 LED55S/840 PSD WB WH C-2R	ENEC mark	For mounting on easily flammable surfaces	-	Temperature 650 °C, duration 30 s	LED55S	-	No	1 unit	1 pc
910500460284	4MX883 581 LED66S/840 PSD DA20 WH C-2R	ENEC mark	For mounting on easily flammable surfaces	-	Temperature 650 °C, duration 30 s	LED66S	-	No	1 unit	1 pc
910500460285	4MX883 581 LED66S/840 PSD NB WH C-2R	ENEC mark	For mounting on easily flammable surfaces	-	Temperature 650 °C, duration 30 s	LED66S	-	No	1 unit	1 pc
910500460393	4MX850 581 LED55S/840 PSD NB WH C-2R	ENEC mark	For mounting on easily flammable surfaces	-	Temperature 650 °C, duration 30 s	-	-	No	1 unit	-
910500460486	4MX866 581 LED66S/840 PSD WB WH ELP1	ENEC mark	For mounting on easily flammable surfaces	-	Temperature 650 °C, duration 30 s	-	-	No	1 unit	-
910500460488	4MX883 581 LED66S/840 PSD WB WH ELP3	ENEC mark	For mounting on easily flammable surfaces	-	Temperature 650 °C, duration 30 s	-	-	No	1 unit	-
910500460490	4MX866 581 LED66S/840 PSD WB WH ELD1	ENEC mark	For mounting on easily flammable surfaces	-	Temperature 650 °C, duration 30 s	-	-	No	1 unit	-
910500460492	4MX883 581 LED66S/840 PSD WB WH ELD3	ENEC mark	For mounting on easily flammable surfaces	-	Temperature 650 °C, duration 30 s	-	-	No	1 unit	-
910500460595	4MX850 581 LED55S/840 PSD WB WH C-2R	ENEC mark	For mounting on easily flammable surfaces	-	Temperature 650 °C, duration 30 s	-	-	No	1 unit	-
910629120426	4MX850 581 LED55S/830 PSD NB WH	ENEC mark	For mounting on easily flammable surfaces	-	Temperature 650 °C, duration 30 s	LED55S	-	No	1 unit	1 pc
910629120526	4MX850 581 LED55S/840 PSD NB WH	ENEC mark	For mounting on easily flammable surfaces	-	Temperature 650 °C, duration 30 s	LED55S	-	No	1 unit	1 pc
910629120626	4MX850 581 LED55S/830 PSD WB WH	ENEC mark	For mounting on easily flammable surfaces	-	Temperature 650 °C, duration 30 s	LED55S	-	No	1 unit	1 pc
910629120726	4MX850 581 LED55S/840 PSD WB WH	ENEC mark	For mounting on easily flammable surfaces	-	Temperature 650 °C, duration 30 s	LED55S	-	No	1 unit	1 pc
910629122026	4MX850 581 LED40S/830 PSD NB WH	ENEC mark	For mounting on easily flammable surfaces	-	Temperature 650 °C, duration 30 s	LED40S	-	No	1 unit	1 pc

Order Code	Full Product Name	ENEC mark	Flammability mark	Gear	Glow-wire test	Lamp family code	Embedded control	Light source replaceable	Number of gear units	Number of light sources
910629122126	4MX850 581 LED40S/840 PSD NB WH	ENEC mark	For mounting on easily flammable surfaces	-	Temperature 650 °C, duration 30 s	LED40S	-	No	1 unit	1 pc
910629122226	4MX850 581 LED40S/830 PSD WB WH	ENEC mark	For mounting on easily flammable surfaces	-	Temperature 650 °C, duration 30 s	LED40S	-	No	1 unit	1 pc
910629122326	4MX850 581 LED40S/840 PSD WB WH	ENEC mark	For mounting on easily flammable surfaces	-	Temperature 650 °C, duration 30 s	LED40S	-	No	1 unit	1 pc
910629125026	4MX850 581 LED55S/830 PSD DA20 WH	ENEC mark	For mounting on easily flammable surfaces	-	Temperature 650 °C, duration 30 s	LED55S	-	No	1 unit	1 pc
910629125126	4MX850 581 LED55S/840 PSD DA20 WH	ENEC mark	For mounting on easily flammable surfaces	-	Temperature 650 °C, duration 30 s	LED55S	-	No	1 unit	1 pc
910629125826	4MX850 581 LED40S/830 PSD DA20 WH	ENEC mark	For mounting on easily flammable surfaces	-	Temperature 650 °C, duration 30 s	LED40S	-	No	1 unit	1 pc
910629125926	4MX850 581 LED40S/840 PSD DA20 WH	ENEC mark	For mounting on easily flammable surfaces	-	Temperature 650 °C, duration 30 s	LED40S	-	No	1 unit	1 pc
910629160326	4MX850 581 LED66S/840 PSD WB WH	ENEC mark	For mounting on easily flammable surfaces	-	Temperature 650 °C, duration 30 s	LED66S	-	No	1 unit	1 pc
910629160426	4MX850 581 LED66S/840 PSD NB WH	ENEC mark	For mounting on easily flammable surfaces	-	Temperature 650 °C, duration 30 s	LED66S	-	No	1 unit	1 pc
910629165226	4MX883 581 LED66S/840 PSD WB WH C-2R	ENEC mark	For mounting on easily flammable surfaces	-	Temperature 650 °C, duration 30 s	LED66S	-	No	1 unit	1 pc
910629165326	4MX866 581 LED66S/840 PSD WB WH C-2R	ENEC mark	For mounting on easily flammable surfaces	-	Temperature 650 °C, duration 30 s	LED66S	-	No	1 unit	1 pc
910629166126	4MX850 581 LED55S/840 PSD DA35 WH	ENEC mark	For mounting on easily flammable surfaces	-	Temperature 650 °C, duration 30 s	LED55S	-	No	1 unit	1 pc
910500460013	4MX850 491 LED66S/840 PSD-CLO WB WH	ENEC mark	For mounting on easily flammable surfaces	-	Temperature 650 °C, duration 30 s	LED66S	Constant light output	No	1 unit	1 pc
910500460014	4MX850 491 LED80S/840 PSD-CLO WB WH	ENEC mark	For mounting on easily flammable surfaces	-	Temperature 650 °C, duration 30 s	LED80S	Constant light output	No	1 unit	1 pc
910500460016	4MX850 491 LED66S/840 PSD-CLO NB WH	ENEC mark	For mounting on easily flammable surfaces	-	Temperature 650 °C, duration 30 s	LED66S	Constant light output	No	1 unit	1 pc
910500460017	4MX850 491 LED80S/840 PSD-CLO NB WH	ENEC mark	For mounting on easily flammable surfaces	-	Temperature 650 °C, duration 30 s	LED80S	Constant light output	No	1 unit	1 pc

Order Code	Full Product Name	ENEC mark	Flammability mark	Gear	Glow-wire test	Lamp family code	Embedded control	Light source replaceable	Number of gear units	Number of light sources
910500460023	4MX850 491 LED80S/840 PSD-CLO DA20 WH	ENEC mark	For mounting on easily flammable surfaces	-	Temperature 650 °C, duration 30 s	LED80S	Constant light output	No	1 unit	1 pc
910500460041	4MX866 491 LED66S/840 PSD WB WH C-2R	ENEC mark	For mounting on easily flammable surfaces	-	Temperature 650 °C, duration 30 s	LED66S	-	No	1 unit	1 pc
910500460049	4MX850 491 LED80S/840 PSD VWB WH	ENEC mark	For mounting on easily flammable surfaces	-	Temperature 650 °C, duration 30 s	LED80S	-	No	1 unit	1 pc
910500460059	4MX866 491 LED55S/840 PSD WB WH	ENEC mark	For mounting on easily flammable surfaces	-	Temperature 650 °C, duration 30 s	LED55S	-	No	1 unit	1 pc
910500460075	4MX850 491 LED80S/840 PSD VWB WH C-2R	ENEC mark	For mounting on easily flammable surfaces	-	Temperature 650 °C, duration 30 s	-	-	No	1 unit	-
910500460080	4MX866 491 LED55S/840 PSD WB WH C-2R	ENEC mark	For mounting on easily flammable surfaces	-	Temperature 650 °C, duration 30 s	LED55S	-	No	1 unit	1 pc
910500460093	4MX866 491 LED55S/840 PSD NB WH	ENEC mark	For mounting on easily flammable surfaces	-	Temperature 650 °C, duration 30 s	LED55S	-	No	1 unit	1 pc
910500460215	4MX850 491 LED80S/840 PSD DA20 WH	ENEC mark	For mounting on easily flammable surfaces	-	Temperature 650 °C, duration 30 s	LED80S	-	No	1 unit	1 pc
910500460216	4MX850 491 LED66S/840 PSD DA20 WH C-2R	ENEC mark	For mounting on easily flammable surfaces	-	Temperature 650 °C, duration 30 s	LED66S	-	No	1 unit	1 pc
910500460217	4MX850 491 LED66S/840 PSD NB WH C-2R	ENEC mark	For mounting on easily flammable surfaces	-	Temperature 650 °C, duration 30 s	LED66S	-	No	1 unit	1 pc
910500460218	4MX850 491 LED66S/840 PSD WB WH C-2R	ENEC mark	For mounting on easily flammable surfaces	-	Temperature 650 °C, duration 30 s	LED66S	-	No	1 unit	1 pc
910500460219	4MX850 491 LED80S/840 PSD DA20 WH C-2R	ENEC mark	For mounting on easily flammable surfaces	-	Temperature 650 °C, duration 30 s	LED80S	-	No	1 unit	1 pc
910500460220	4MX850 491 LED80S/840 PSD NB WH C-2R	ENEC mark	For mounting on easily flammable surfaces	-	Temperature 650 °C, duration 30 s	LED80S	-	No	1 unit	1 pc
910500460221	4MX850 491 LED80S/840 PSD WB WH C-2R	ENEC mark	For mounting on easily flammable surfaces	-	Temperature 650 °C, duration 30 s	LED80S	-	No	1 unit	1 pc
910500460231	4MX866 491 LED55S/840 PSD DA20 WH	ENEC mark	For mounting on easily flammable surfaces	-	Temperature 650 °C, duration 30 s	LED55S	-	No	1 unit	1 pc
910500460235	4MX866 491 LED66S/840 PSD DA20 WH	ENEC mark	For mounting on easily flammable surfaces	-	Temperature 650 °C, duration 30 s	LED66S	-	No	1 unit	1 pc

Order Code	Full Product Name	ENEC mark	Flammability mark	Gear	Glow-wire test	Lamp family code	Embedded control	Light source replaceable	Number of gear units	Number of light sources
910500460236	4MX866 491 LED66S/840 PSD WB WH	ENEC mark	For mounting on easily flammable surfaces	-	Temperature 650 °C, duration 30 s	LED66S	-	No	1 unit	1 pc
910500460237	4MX866 491 LED55S/840 PSD DA20 WH C-2R	ENEC mark	For mounting on easily flammable surfaces	-	Temperature 650 °C, duration 30 s	LED55S	-	No	1 unit	1 pc
910500460238	4MX866 491 LED55S/840 PSD NB WH C-2R	ENEC mark	For mounting on easily flammable surfaces	-	Temperature 650 °C, duration 30 s	LED55S	-	No	1 unit	1 pc
910500460239	4MX866 491 LED66S/840 PSD DA20 WH C-2R	ENEC mark	For mounting on easily flammable surfaces	-	Temperature 650 °C, duration 30 s	LED66S	-	No	1 unit	1 pc
910500460240	4MX866 491 LED66S/840 PSD NB WH C-2R	ENEC mark	For mounting on easily flammable surfaces	-	Temperature 650 °C, duration 30 s	LED66S	-	No	1 unit	1 pc
910500460257	4MX883 491 LED55S/840 PSD DA20 WH	ENEC mark	For mounting on easily flammable surfaces	-	Temperature 650 °C, duration 30 s	LED55S	-	No	1 unit	1 pc
910500460258	4MX883 491 LED55S/840 PSD NB WH	ENEC mark	For mounting on easily flammable surfaces	-	Temperature 650 °C, duration 30 s	LED55S	-	No	1 unit	1 pc
910500460259	4MX883 491 LED55S/840 PSD WB WH	ENEC mark	For mounting on easily flammable surfaces	-	Temperature 650 °C, duration 30 s	LED55S	-	No	1 unit	1 pc
910500460263	4MX883 491 LED66S/840 PSD DA20 WH	ENEC mark	For mounting on easily flammable surfaces	-	Temperature 650 °C, duration 30 s	LED66S	-	No	1 unit	1 pc
910500460264	4MX883 491 LED66S/840 PSD NB WH	ENEC mark	For mounting on easily flammable surfaces	-	Temperature 650 °C, duration 30 s	LED66S	-	No	1 unit	1 pc
910500460265	4MX883 491 LED66S/840 PSD WB WH	ENEC mark	For mounting on easily flammable surfaces	-	Temperature 650 °C, duration 30 s	LED66S	-	No	1 unit	1 pc
910500460266	4MX883 491 LED55S/840 PSD DA20 WH C-2R	ENEC mark	For mounting on easily flammable surfaces	-	Temperature 650 °C, duration 30 s	LED55S	-	No	1 unit	1 pc
910500460267	4MX883 491 LED55S/840 PSD NB WH C-2R	ENEC mark	For mounting on easily flammable surfaces	-	Temperature 650 °C, duration 30 s	LED55S	-	No	1 unit	1 pc
910500460268	4MX883 491 LED55S/840 PSD WB WH C-2R	ENEC mark	For mounting on easily flammable surfaces	-	Temperature 650 °C, duration 30 s	LED55S	-	No	1 unit	1 pc
910500460269	4MX883 491 LED66S/840 PSD DA20 WH C-2R	ENEC mark	For mounting on easily flammable surfaces	-	Temperature 650 °C, duration 30 s	LED66S	-	No	1 unit	1 pc
910500460270	4MX883 491 LED66S/840 PSD NB WH C-2R	ENEC mark	For mounting on easily flammable surfaces	-	Temperature 650 °C, duration 30 s	LED66S	-	No	1 unit	1 pc

Order Code	Full Product Name	ENEC mark	Flammability mark	Gear	Glow-wire test	Lamp family code	Embedded control	Light source replaceable	Number of gear units	Number of light sources
910500460271	4MX883 491 LED66S/840 PSD WB WH C-2R	ENEC mark	For mounting on easily flammable surfaces	-	Temperature 650 °C, duration 30 s	LED66S	-	No	1 unit	1 pc
910500460391	4MX850 491 LED55S/840 PSD WB WH C-2R	ENEC mark	For mounting on easily flammable surfaces	-	Temperature 650 °C, duration 30 s	-	-	No	1 unit	-
910500460415	4MX850 491 LED66S/840 PSD VWB WH C-2R	ENEC mark	For mounting on easily flammable surfaces	-	Temperature 650 °C, duration 30 s	-	-	No	1 unit	-
910500460420	4MX850 491 LED40S/840 PSD WB WH C-2R	ENEC mark	For mounting on easily flammable surfaces	-	Temperature 650 °C, duration 30 s	-	-	No	1 unit	-
910500460485	4MX866 491 LED66S/840 PSD WB WH ELP1	ENEC mark	For mounting on easily flammable surfaces	-	Temperature 650 °C, duration 30 s	-	-	No	1 unit	-
910500460487	4MX883 491 LED66S/840 PSD WB WH ELP3	ENEC mark	For mounting on easily flammable surfaces	-	Temperature 650 °C, duration 30 s	-	-	No	1 unit	-
910500460489	4MX866 491 LED66S/840 PSD WB WH ELD1	ENEC mark	For mounting on easily flammable surfaces	-	Temperature 650 °C, duration 30 s	-	-	No	1 unit	-
910500460491	4MX883 491 LED66S/840 PSD WB WH ELD3	ENEC mark	For mounting on easily flammable surfaces	-	Temperature 650 °C, duration 30 s	-	-	No	1 unit	-
910500460537	4MX850 491 LED40S/840 PSD NB WH C-2R	ENEC mark	For mounting on easily flammable surfaces	-	Temperature 650 °C, duration 30 s	-	-	No	1 unit	-
910500460538	4MX850 491 LED55S/840 PSD NB WH C-2R	ENEC mark	For mounting on easily flammable surfaces	-	Temperature 650 °C, duration 30 s	-	-	No	1 unit	-
910500460562	4MX850 491 LED80S/840 PSD A20 WH C-2R	-	-	-	-	-	-	-	-	-
910629120026	4MX850 491 LED55S/830 PSD NB WH	ENEC mark	For mounting on easily flammable surfaces	-	Temperature 650 °C, duration 30 s	LED55S	-	No	1 unit	1 pc
910629120126	4MX850 491 LED55S/840 PSD NB WH	ENEC mark	For mounting on easily flammable surfaces	-	Temperature 650 °C, duration 30 s	LED55S	-	No	1 unit	1 pc
910629120226	4MX850 491 LED55S/830 PSD WB WH	ENEC mark	For mounting on easily flammable surfaces	-	Temperature 650 °C, duration 30 s	LED55S	-	No	1 unit	1 pc
910629120326	4MX850 491 LED55S/840 PSD WB WH	ENEC mark	For mounting on easily flammable surfaces	-	Temperature 650 °C, duration 30 s	LED55S	-	No	1 unit	1 pc
910629121626	4MX850 491 LED40S/830 PSD NB WH	ENEC mark	For mounting on easily flammable surfaces	-	Temperature 650 °C, duration 30 s	LED40S	-	No	1 unit	1 pc

Order Code	Full Product Name	ENEC mark	Flammability mark	Gear	Glow-wire test	Lamp family code	Embedded control	Light source replaceable	Number of gear units	Number of light sources
910629121726	4MX850 491 LED40S/840 PSD NB WH	ENEC mark	For mounting on easily flammable surfaces	-	Temperature 650 °C, duration 30 s	LED40S	-	No	1 unit	1 pc
910629121826	4MX850 491 LED40S/830 PSD WB WH	ENEC mark	For mounting on easily flammable surfaces	-	Temperature 650 °C, duration 30 s	LED40S	-	No	1 unit	1 pc
910629121926	4MX850 491 LED40S/840 PSD WB WH	ENEC mark	For mounting on easily flammable surfaces	-	Temperature 650 °C, duration 30 s	LED40S	-	No	1 unit	1 pc
910629124826	4MX850 491 LED55S/830 PSD DA20 WH	ENEC mark	For mounting on easily flammable surfaces	-	Temperature 650 °C, duration 30 s	LED55S	-	No	1 unit	1 pc
910629124926	4MX850 491 LED55S/840 PSD DA20 WH	ENEC mark	For mounting on easily flammable surfaces	-	Temperature 650 °C, duration 30 s	LED55S	-	No	1 unit	1 pc
910629125626	4MX850 491 LED40S/830 PSD DA20 WH	ENEC mark	For mounting on easily flammable surfaces	-	Temperature 650 °C, duration 30 s	LED40S	-	No	1 unit	1 pc
910629125726	4MX850 491 LED40S/840 PSD DA20 WH	ENEC mark	For mounting on easily flammable surfaces	-	Temperature 650 °C, duration 30 s	LED40S	-	No	1 unit	1 pc
910629158026	4MX850 491 LED66S/840 PSD DA20 WH	ENEC mark	For mounting on easily flammable surfaces	-	Temperature 650 °C, duration 30 s	LED66S	-	No	1 unit	1 pc
910629158126	4MX850 491 LED66S/840 PSD WB WH	ENEC mark	For mounting on easily flammable surfaces	-	Temperature 650 °C, duration 30 s	LED66S	-	No	1 unit	1 pc
910629158226	4MX850 491 LED66S/840 PSD NB WH	ENEC mark	For mounting on easily flammable surfaces	-	Temperature 650 °C, duration 30 s	LED66S	-	No	1 unit	1 pc
910629160026	4MX850 491 LED66S/830 PSD DA20 WH	ENEC mark	For mounting on easily flammable surfaces	-	Temperature 650 °C, duration 30 s	LED66S	-	No	1 unit	1 pc
910629160126	4MX850 491 LED66S/830 PSD WB WH	ENEC mark	For mounting on easily flammable surfaces	-	Temperature 650 °C, duration 30 s	LED66S	-	No	1 unit	1 pc
910629160226	4MX850 491 LED66S/830 PSD NB WH	ENEC mark	For mounting on easily flammable surfaces	-	Temperature 650 °C, duration 30 s	LED66S	-	No	1 unit	1 pc
910629160526	4MX850 491 LED40S/840 PSD A20 WH	ENEC mark	For mounting on easily flammable surfaces	-	Temperature 650 °C, duration 30 s	LED40S	-	No	1 unit	1 pc
910629160626	4MX850 491 LED55S/840 PSD A20 WH	ENEC mark	For mounting on easily flammable surfaces	-	Temperature 650 °C, duration 30 s	LED55S	-	No	1 unit	1 pc
910629160726	4MX850 491 LED55S/830 PSD A20 WH	ENEC mark	For mounting on easily flammable surfaces	-	Temperature 650 °C, duration 30 s	LED55S	-	No	1 unit	1 pc

Order Code	Full Product Name	ENEC mark	Flammability mark	Gear	Glow-wire test	Lamp family code	Embedded control	Light source replaceable	Number of gear units	Number of light sources
910629161026	4MX850 491 LED40S/830 PSD A20 WH	ENEC mark	For mounting on easily flammable surfaces	-	Temperature 650 °C, duration 30 s	LED40S	-	No	1 unit	1 pc
910629162126	4MX850 491 LED66S/840 PSD A20 WH	ENEC mark	For mounting on easily flammable surfaces	-	Temperature 650 °C, duration 30 s	LED66S	-	No	1 unit	1 pc
910629165926	4MX850 491 LED55S/840 PSD DA35 WH	ENEC mark	For mounting on easily flammable surfaces	-	Temperature 650 °C, duration 30 s	LED55S	-	No	1 unit	1 pc
910629166026	4MX850 491 LED66S/840 PSD DA35 WH	ENEC mark	For mounting on easily flammable surfaces	-	Temperature 650 °C, duration 30 s	LED66S	-	No	1 unit	1 pc
910629167426	4MX850 491 LED80S/840 PSD NB WH	ENEC mark	For mounting on easily flammable surfaces	-	Temperature 650 °C, duration 30 s	LED80S	-	No	1 unit	1 pc
910629167526	4MX850 491 LED80S/840 PSD WB WH	ENEC mark	For mounting on easily flammable surfaces	-	Temperature 650 °C, duration 30 s	LED80S	-	No	1 unit	1 pc
910629167626	4MX866 491 LED66S/840 PSD NB WH	ENEC mark	For mounting on easily flammable surfaces	-	Temperature 650 °C, duration 30 s	LED66S	-	No	1 unit	1 pc
910500460502	4MX850 491 LED80S/840 PSD WB SI	-	-	-	-	-	-	-	-	-
910629120826	4MX850 491 LED55S/830 PSD NB SI	ENEC mark	For mounting on easily flammable surfaces	-	Temperature 650 °C, duration 30 s	LED55S	-	No	1 unit	1 pc
910629120926	4MX850 491 LED55S/840 PSD NB SI	ENEC mark	For mounting on easily flammable surfaces	-	Temperature 650 °C, duration 30 s	LED55S	-	No	1 unit	1 pc
910629121026	4MX850 491 LED55S/830 PSD WB SI	ENEC mark	For mounting on easily flammable surfaces	-	Temperature 650 °C, duration 30 s	LED55S	-	No	1 unit	1 pc
910629121126	4MX850 491 LED55S/840 PSD WB SI	ENEC mark	For mounting on easily flammable surfaces	-	Temperature 650 °C, duration 30 s	LED55S	-	No	1 unit	1 pc
910629122426	4MX850 491 LED40S/830 PSD NB SI	ENEC mark	For mounting on easily flammable surfaces	-	Temperature 650 °C, duration 30 s	LED40S	-	No	1 unit	1 pc
910629122526	4MX850 491 LED40S/840 PSD NB SI	ENEC mark	For mounting on easily flammable surfaces	-	Temperature 650 °C, duration 30 s	LED40S	-	No	1 unit	1 pc
910629122626	4MX850 491 LED40S/830 PSD WB SI	ENEC mark	For mounting on easily flammable surfaces	-	Temperature 650 °C, duration 30 s	LED40S	-	No	1 unit	1 pc
910629122726	4MX850 491 LED40S/840 PSD WB SI	ENEC mark	For mounting on easily flammable surfaces	-	Temperature 650 °C, duration 30 s	LED40S	-	No	1 unit	1 pc
910629125226	4MX850 491 LED55S/830 PSD DA20 SI	ENEC mark	For mounting on easily flammable surfaces	-	Temperature 650 °C, duration 30 s	LED55S	-	No	1 unit	1 pc
910629125326	4MX850 491 LED55S/840 PSD DA20 SI	ENEC mark	For mounting on easily flammable surfaces	-	Temperature 650 °C, duration 30 s	LED55S	-	No	1 unit	1 pc
910629126026	4MX850 491 LED40S/830 PSD DA20 SI	ENEC mark	For mounting on easily flammable surfaces	-	Temperature 650 °C, duration 30 s	LED40S	-	No	1 unit	1 pc

Order Code	Full Product Name	ENEC mark	Flammability mark	Gear	Glow-wire test	Lamp family code	Embedded control	Light source replaceable	Number of gear units	Number of light sources
910629126126	4MX850 491 LED40S/840 PSD DA20 SI	ENEC mark	For mounting on easily flammable surfaces	-	Temperature 650 °C, duration 30 s	LED40S	-	No	1 unit	1 pc
910629160826	4MX850 491 LED55S/830 PSD A20 SI	ENEC mark	For mounting on easily flammable surfaces	-	Temperature 650 °C, duration 30 s	LED55S	-	No	1 unit	1 pc
910629160926	4MX850 491 LED55S/840 PSD A20 SI	ENEC mark	For mounting on easily flammable surfaces	-	Temperature 650 °C, duration 30 s	LED55S	-	No	1 unit	1 pc
910629161126	4MX850 491 LED40S/830 PSD A20 SI	ENEC mark	For mounting on easily flammable surfaces	-	Temperature 650 °C, duration 30 s	LED40S	-	No	1 unit	1 pc
910629161226	4MX850 491 LED40S/840 PSD A20 SI	ENEC mark	For mounting on easily flammable surfaces	-	Temperature 650 °C, duration 30 s	LED40S	-	No	1 unit	1 pc
910629162226	4MX850 491 LED66S/840 PSD A20 SI	ENEC mark	For mounting on easily flammable surfaces	-	Temperature 650 °C, duration 30 s	LED66S	-	No	1 unit	1 pc
910629165626	4MX850 491 LED55S/840 PSD DA35 SI	ENEC mark	For mounting on easily flammable surfaces	-	Temperature 650 °C, duration 30 s	LED55S	-	No	1 unit	1 pc
910629121226	4MX850 581 LED55S/830 PSD NB SI	ENEC mark	For mounting on easily flammable surfaces	-	Temperature 650 °C, duration 30 s	LED55S	-	No	1 unit	1 pc
910629121326	4MX850 581 LED55S/840 PSD NB SI	ENEC mark	For mounting on easily flammable surfaces	-	Temperature 650 °C, duration 30 s	LED55S	-	No	1 unit	1 pc
910629121426	4MX850 581 LED55S/830 PSD WB SI	ENEC mark	For mounting on easily flammable surfaces	-	Temperature 650 °C, duration 30 s	LED55S	-	No	1 unit	1 pc
910629121526	4MX850 581 LED55S/840 PSD WB SI	ENEC mark	For mounting on easily flammable surfaces	-	Temperature 650 °C, duration 30 s	LED55S	-	No	1 unit	1 pc
910629122826	4MX850 581 LED40S/830 PSD NB SI	ENEC mark	For mounting on easily flammable surfaces	-	Temperature 650 °C, duration 30 s	LED40S	-	No	1 unit	1 pc
910629122926	4MX850 581 LED40S/840 PSD NB SI	ENEC mark	For mounting on easily flammable surfaces	-	Temperature 650 °C, duration 30 s	LED40S	-	No	1 unit	1 pc
910629123026	4MX850 581 LED40S/830 PSD WB SI	ENEC mark	For mounting on easily flammable surfaces	-	Temperature 650 °C, duration 30 s	LED40S	-	No	1 unit	1 pc
910629123126	4MX850 581 LED40S/840 PSD WB SI	ENEC mark	For mounting on easily flammable surfaces	-	Temperature 650 °C, duration 30 s	LED40S	-	No	1 unit	1 pc
910629125426	4MX850 581 LED55S/830 PSD DA20 SI	ENEC mark	For mounting on easily flammable surfaces	-	Temperature 650 °C, duration 30 s	LED55S	-	No	1 unit	1 pc
910629125526	4MX850 581 LED55S/840 PSD DA20 SI	ENEC mark	For mounting on easily flammable surfaces	-	Temperature 650 °C, duration 30 s	LED55S	-	No	1 unit	1 pc
910629126226	4MX850 581 LED40S/830 PSD DA20 SI	ENEC mark	For mounting on easily flammable surfaces	-	Temperature 650 °C, duration 30 s	LED40S	-	No	1 unit	1 pc
910629126326	4MX850 581 LED40S/840 PSD DA20 SI	ENEC mark	For mounting on easily flammable surfaces	-	Temperature 650 °C, duration 30 s	LED40S	-	No	1 unit	1 pc

Order Code	Full Product Name	ENEC		Gear	Glow-wire test	Lamp	Embedded control	Light source replaceable	Number of gear units	Number of light sources
		mark	Flammability mark			family code				
910629165726	4MX850 581 LED55S/840 PSD DA35 SI	ENEC mark	For mounting on easily flammable surfaces	-	Temperature 650 °C, duration 30 s	LED55S	-	No	1 unit	1 pc

General Information (3/3)

Order Code	Full Product Name	Optic type	Product		Order Code	Full Product Name	Optic type	Product	
			Family Code	UL mark				Family Code	UL mark
910500457964	4MX850 581 LED80S/840 PSD NB WH	Narrow beam	4MX850	-	910500460244	4MX866 581 LED55S/840 PSD NB WH	Narrow beam	4MX866	-
910500457965	4MX850 581 LED80S/840 PSD WB WH	Wide beam	4MX850	-	910500460245	4MX866 581 LED55S/840 PSD WB WH	Wide beam	4MX866	-
910500460003	4MX850 581 LED66S/840 PSD-CLO WB WH	Wide beam	4MX850	-	910500460249	4MX866 581 LED66S/840 PSD DA20 WH	Double asymmetric optic 20°	4MX866	-
910500460004	4MX850 581 LED80S/840 PSD-CLO WB WH	Wide beam	4MX850	-	910500460250	4MX866 581 LED55S/840 PSD DA20 WH C-2R	Double asymmetric optic 20°	4MX866	-
910500460007	4MX850 581 LED80S/840 PSD NB WH C-2R	Narrow beam	4MX850	-	910500460251	4MX866 581 LED55S/840 PSD WB WH C-2R	Wide beam	4MX866	-
910500460008	4MX850 581 LED80S/840 PSD WB WH C-2R	Wide beam	4MX850	-	910500460252	4MX866 581 LED66S/840 PSD DA20 WH C-2R	Double asymmetric optic 20°	4MX866	-
910500460009	4MX850 581 LED66S/840 PSD NB WH C-2R	Narrow beam	4MX850	-	910500460253	4MX866 581 LED66S/840 PSD NB WH C-2R	Narrow beam	4MX866	-
910500460010	4MX850 581 LED66S/840 PSD WB WH C-2R	Wide beam	4MX850	-	910500460273	4MX883 581 LED55S/840 PSD DA20 WH	Double asymmetric optic 20°	4MX883	-
910500460048	4MX850 581 LED80S/840 PSD VWB WH	Very wide beam	4MX850	-	910500460274	4MX883 581 LED55S/840 PSD NB WH	Narrow beam	4MX883	-
910500460074	4MX866 581 LED66S/840 PSD WB WH	Wide beam	4MX866	-	910500460275	4MX883 581 LED55S/840 PSD WB WH	Wide beam	4MX883	-
910500460222	4MX850 581 LED66S/840 PSD DA20 WH	Double asymmetric optic 20°	4MX850	-	910500460279	4MX883 581 LED66S/840 PSD DA20 WH	Double asymmetric optic 20°	4MX883	-
910500460223	4MX850 581 LED80S/840 PSD DA20 WH	Double asymmetric optic 20°	4MX850	-	910500460280	4MX883 581 LED66S/840 PSD WB WH	Wide beam	4MX883	-
910500460224	4MX850 581 LED66S/840 PSD DA20 WH C-2R	Double asymmetric optic 20°	4MX850	-	910500460281	4MX883 581 LED55S/840 PSD DA20 WH C-2R	Double asymmetric optic 20°	4MX883	-
910500460225	4MX850 581 LED80S/840 PSD DA20 WH C-2R	Double asymmetric optic 20°	4MX850	-	910500460282	4MX883 581 LED55S/840 PSD NB WH C-2R	Narrow beam	4MX883	-
910500460226	4MX850 581 LED66S/840 PSD-CLO DA20 WH	Double asymmetric optic 20°	4MX850	-	910500460283	4MX883 581 LED55S/840 PSD WB WH C-2R	Wide beam	4MX883	-
910500460227	4MX850 581 LED80S/840 PSD-CLO DA20 WH	Double asymmetric optic 20°	4MX850	-	910500460284	4MX883 581 LED66S/840 PSD DA20 WH C-2R	Double asymmetric optic 20°	4MX883	-
910500460243	4MX866 581 LED55S/840 PSD DA20 WH	Double asymmetric optic 20°	4MX866	-	910500460285	4MX883 581 LED66S/840 PSD NB WH C-2R	Narrow beam	4MX883	-

Order Code	Full Product Name	Optic type	Product Family Code	UL mark
910500460393	4MX850 581 LED55S/840 PSD NB WH C-2R	Narrow beam	4MX850	-
910500460486	4MX866 581 LED66S/840 PSD WB WH ELP1	Wide beam	4MX866	-
910500460488	4MX883 581 LED66S/840 PSD WB WH ELP3	Wide beam	4MX883	-
910500460490	4MX866 581 LED66S/840 PSD WB WH ELD1	Wide beam	4MX866	-
910500460492	4MX883 581 LED66S/840 PSD WB WH ELD3	Wide beam	4MX883	-
910500460595	4MX850 581 LED55S/840 PSD WB WH C-2R	Wide beam	4MX850	-
910629120426	4MX850 581 LED55S/830 PSD NB WH	Narrow beam	4MX850	-
910629120526	4MX850 581 LED55S/840 PSD NB WH	Narrow beam	4MX850	-
910629120626	4MX850 581 LED55S/830 PSD WB WH	Wide beam	4MX850	-
910629120726	4MX850 581 LED55S/840 PSD WB WH	Wide beam	4MX850	-
910629122026	4MX850 581 LED40S/830 PSD NB WH	Narrow beam	4MX850	-
910629122126	4MX850 581 LED40S/840 PSD NB WH	Narrow beam	4MX850	-
910629122226	4MX850 581 LED40S/830 PSD WB WH	Wide beam	4MX850	-
910629122326	4MX850 581 LED40S/840 PSD WB WH	Wide beam	4MX850	-
910629125026	4MX850 581 LED55S/830 PSD DA20 WH	Double asymmetric optic 20°	4MX850	-
910629125126	4MX850 581 LED55S/840 PSD DA20 WH	Double asymmetric optic 20°	4MX850	-
910629125826	4MX850 581 LED40S/830 PSD DA20 WH	Double asymmetric optic 20°	4MX850	-
910629125926	4MX850 581 LED40S/840 PSD DA20 WH	Double asymmetric optic 20°	4MX850	-
910629160326	4MX850 581 LED66S/840 PSD WB WH	Wide beam	4MX850	-
910629160426	4MX850 581 LED66S/840 PSD NB WH	Narrow beam	4MX850	-
910629165226	4MX883 581 LED66S/840 PSD WB WH C-2R	Wide beam	4MX883	-
910629165326	4MX866 581 LED66S/840 PSD WB WH C-2R	Wide beam	4MX866	-

Order Code	Full Product Name	Optic type	Product Family Code	UL mark
910629166126	4MX850 581 LED55S/840 PSD DA35 WH	Double asymmetric optic 35°	4MX850	-
910500460013	4MX850 491 LED66S/840 PSD-CLO WB WH	Wide beam	4MX850	-
910500460014	4MX850 491 LED80S/840 PSD-CLO WB WH	Wide beam	4MX850	-
910500460016	4MX850 491 LED66S/840 PSD-CLO NB WH	Narrow beam	4MX850	-
910500460017	4MX850 491 LED80S/840 PSD-CLO NB WH	Narrow beam	4MX850	-
910500460023	4MX850 491 LED80S/840 PSD-CLO DA20 WH	Double asymmetric optic 20°	4MX850	-
910500460041	4MX866 491 LED66S/840 PSD WB WH C-2R	Wide beam	4MX866	-
910500460049	4MX850 491 LED80S/840 PSD VWB WH	Very wide beam	4MX850	-
910500460059	4MX866 491 LED55S/840 PSD WB WH	Wide beam	4MX866	-
910500460075	4MX850 491 LED80S/840 PSD VWB WH C-2R	Very wide beam	4MX850	-
910500460080	4MX866 491 LED55S/840 PSD WB WH C-2R	Wide beam	4MX866	-
910500460093	4MX866 491 LED55S/840 PSD NB WH	Narrow beam	4MX866	-
910500460215	4MX850 491 LED80S/840 PSD DA20 WH	Double asymmetric optic 20°	4MX850	-
910500460216	4MX850 491 LED66S/840 PSD DA20 WH C-2R	Double asymmetric optic 20°	4MX850	-
910500460217	4MX850 491 LED66S/840 PSD NB WH C-2R	Narrow beam	4MX850	-
910500460218	4MX850 491 LED66S/840 PSD WB WH C-2R	Wide beam	4MX850	-
910500460219	4MX850 491 LED80S/840 PSD DA20 WH C-2R	Double asymmetric optic 20°	4MX850	-
910500460220	4MX850 491 LED80S/840 PSD NB WH C-2R	Narrow beam	4MX850	-
910500460221	4MX850 491 LED80S/840 PSD WB WH C-2R	Wide beam	4MX850	-
910500460231	4MX866 491 LED55S/840 PSD DA20 WH	Double asymmetric optic 20°	4MX866	-
910500460235	4MX866 491 LED66S/840 PSD DA20 WH	Double asymmetric optic 20°	4MX866	-

Order Code	Full Product Name	Optic type	Product	
			Family Code	UL mark
910500460236	4MX866 491 LED66S/840 PSD WB WH	Wide beam	4MX866	-
910500460237	4MX866 491 LED55S/840 PSD DA20 WH C-2R	Double asymmetric optic 20°	4MX866	-
910500460238	4MX866 491 LED55S/840 PSD NB WH C-2R	Narrow beam	4MX866	-
910500460239	4MX866 491 LED66S/840 PSD DA20 WH C-2R	Double asymmetric optic 20°	4MX866	-
910500460240	4MX866 491 LED66S/840 PSD NB WH C-2R	Narrow beam	4MX866	-
910500460257	4MX883 491 LED55S/840 PSD DA20 WH	Double asymmetric optic 20°	4MX883	-
910500460258	4MX883 491 LED55S/840 PSD NB WH	Narrow beam	4MX883	-
910500460259	4MX883 491 LED55S/840 PSD WB WH	Wide beam	4MX883	-
910500460263	4MX883 491 LED66S/840 PSD DA20 WH	Double asymmetric optic 20°	4MX883	-
910500460264	4MX883 491 LED66S/840 PSD NB WH	Narrow beam	4MX883	-
910500460265	4MX883 491 LED66S/840 PSD WB WH	Wide beam	4MX883	-
910500460266	4MX883 491 LED55S/840 PSD DA20 WH C-2R	Double asymmetric optic 20°	4MX883	-
910500460267	4MX883 491 LED55S/840 PSD NB WH C-2R	Narrow beam	4MX883	-
910500460268	4MX883 491 LED55S/840 PSD WB WH C-2R	Wide beam	4MX883	-
910500460269	4MX883 491 LED66S/840 PSD DA20 WH C-2R	Double asymmetric optic 20°	4MX883	-
910500460270	4MX883 491 LED66S/840 PSD NB WH C-2R	Narrow beam	4MX883	-
910500460271	4MX883 491 LED66S/840 PSD WB WH C-2R	Wide beam	4MX883	-
910500460391	4MX850 491 LED55S/840 PSD WB WH C-2R	Wide beam	4MX850	-
910500460415	4MX850 491 LED66S/840 PSD VWB WH C-2R	Very wide beam	4MX850	-
910500460420	4MX850 491 LED40S/840 PSD WB WH C-2R	Wide beam	4MX850	-
910500460485	4MX866 491 LED66S/840 PSD WB WH ELP1	Wide beam	4MX866	-
910500460487	4MX883 491 LED66S/840 PSD WB WH ELP3	Wide beam	4MX883	-

Order Code	Full Product Name	Optic type	Product	
			Family Code	UL mark
910500460489	4MX866 491 LED66S/840 PSD WB WH ELD1	Wide beam	4MX866	-
910500460491	4MX883 491 LED66S/840 PSD WB WH ELD3	Wide beam	4MX883	-
910500460537	4MX850 491 LED40S/840 PSD NB WH C-2R	Narrow beam	4MX850	-
910500460538	4MX850 491 LED55S/840 PSD NB WH C-2R	Narrow beam	4MX850	-
910500460562	4MX850 491 LED80S/840 PSD A20 WH C-2R	-	4MX850	-
910629120026	4MX850 491 LED55S/830 PSD NB WH	Narrow beam	4MX850	-
910629120126	4MX850 491 LED55S/840 PSD NB WH	Narrow beam	4MX850	-
910629120226	4MX850 491 LED55S/830 PSD WB WH	Wide beam	4MX850	-
910629120326	4MX850 491 LED55S/840 PSD WB WH	Wide beam	4MX850	-
910629121626	4MX850 491 LED40S/830 PSD NB WH	Narrow beam	4MX850	-
910629121726	4MX850 491 LED40S/840 PSD NB WH	Narrow beam	4MX850	-
910629121826	4MX850 491 LED40S/830 PSD WB WH	Wide beam	4MX850	-
910629121926	4MX850 491 LED40S/840 PSD WB WH	Wide beam	4MX850	-
910629124826	4MX850 491 LED55S/830 PSD DA20 WH	Double asymmetric optic 20°	4MX850	-
910629124926	4MX850 491 LED55S/840 PSD DA20 WH	Double asymmetric optic 20°	4MX850	-
910629125626	4MX850 491 LED40S/830 PSD DA20 WH	Double asymmetric optic 20°	4MX850	-
910629125726	4MX850 491 LED40S/840 PSD DA20 WH	Double asymmetric optic 20°	4MX850	-
910629158026	4MX850 491 LED66S/840 PSD DA20 WH	Double asymmetric optic 20°	4MX850	-
910629158126	4MX850 491 LED66S/840 PSD WB WH	Wide beam	4MX850	-
910629158226	4MX850 491 LED66S/840 PSD NB WH	Narrow beam	4MX850	-
910629160026	4MX850 491 LED66S/830 PSD DA20 WH	Double asymmetric optic 20°	4MX850	-
910629160126	4MX850 491 LED66S/830 PSD WB WH	Wide beam	4MX850	-

Maxos LED

Order Code	Full Product Name	Optic type	Product Family Code	UL mark
910629160226	4MX850 491 LED66S/830 PSD NB WH	Narrow beam	4MX850	-
910629160526	4MX850 491 LED40S/840 PSD A20 WH	Asymmetrical mirror axis angle 20°	4MX850	-
910629160626	4MX850 491 LED55S/840 PSD A20 WH	Asymmetrical mirror axis angle 20°	4MX850	-
910629160726	4MX850 491 LED55S/830 PSD A20 WH	Asymmetrical mirror axis angle 20°	4MX850	-
910629161026	4MX850 491 LED40S/830 PSD A20 WH	Asymmetrical mirror axis angle 20°	4MX850	-
910629162126	4MX850 491 LED66S/840 PSD A20 WH	Asymmetrical mirror axis angle 20°	4MX850	-
910629165926	4MX850 491 LED55S/840 PSD DA35 WH	Double asymmetric optic 35°	4MX850	-
910629166026	4MX850 491 LED66S/840 PSD DA35 WH	Double asymmetric optic 35°	4MX850	-
910629167426	4MX850 491 LED80S/840 PSD NB WH	Narrow beam	4MX850	-
910629167526	4MX850 491 LED80S/840 PSD WB WH	Wide beam	4MX850	-
910629167626	4MX866 491 LED66S/840 PSD NB WH	Narrow beam	4MX866	-
910500460502	4MX850 491 LED80S/840 PSD WB SI	-	4MX850	-
910629120826	4MX850 491 LED55S/830 PSD NB SI	Narrow beam	4MX850	-
910629120926	4MX850 491 LED55S/840 PSD NB SI	Narrow beam	4MX850	-
910629121026	4MX850 491 LED55S/830 PSD WB SI	Wide beam	4MX850	-
910629121126	4MX850 491 LED55S/840 PSD WB SI	Wide beam	4MX850	-
910629122426	4MX850 491 LED40S/830 PSD NB SI	Narrow beam	4MX850	-
910629122526	4MX850 491 LED40S/840 PSD NB SI	Narrow beam	4MX850	-
910629122626	4MX850 491 LED40S/830 PSD WB SI	Wide beam	4MX850	-
910629122726	4MX850 491 LED40S/840 PSD WB SI	Wide beam	4MX850	-
910629125226	4MX850 491 LED55S/830 PSD DA20 SI	Double asymmetric optic 20°	4MX850	-

Order Code	Full Product Name	Optic type	Product Family Code	UL mark
910629125326	4MX850 491 LED55S/840 PSD DA20 SI	Double asymmetric optic 20°	4MX850	-
910629126026	4MX850 491 LED40S/830 PSD DA20 SI	Double asymmetric optic 20°	4MX850	-
910629126126	4MX850 491 LED40S/840 PSD DA20 SI	Double asymmetric optic 20°	4MX850	-
910629160826	4MX850 491 LED55S/830 PSD A20 SI	Asymmetrical mirror axis angle 20°	4MX850	-
910629160926	4MX850 491 LED55S/840 PSD A20 SI	Asymmetrical mirror axis angle 20°	4MX850	-
910629161126	4MX850 491 LED40S/830 PSD A20 SI	Asymmetrical mirror axis angle 20°	4MX850	-
910629161226	4MX850 491 LED40S/840 PSD A20 SI	Asymmetrical mirror axis angle 20°	4MX850	-
910629162226	4MX850 491 LED66S/840 PSD A20 SI	Asymmetrical mirror axis angle 20°	4MX850	-
910629165626	4MX850 491 LED55S/840 PSD DA35 SI	Double asymmetric optic 35°	4MX850	-
910629121226	4MX850 581 LED55S/830 PSD NB SI	Narrow beam	4MX850	-
910629121326	4MX850 581 LED55S/840 PSD NB SI	Narrow beam	4MX850	-
910629121426	4MX850 581 LED55S/830 PSD WB SI	Wide beam	4MX850	-
910629121526	4MX850 581 LED55S/840 PSD WB SI	Wide beam	4MX850	-
910629122826	4MX850 581 LED40S/830 PSD NB SI	Narrow beam	4MX850	-
910629122926	4MX850 581 LED40S/840 PSD NB SI	Narrow beam	4MX850	-
910629123026	4MX850 581 LED40S/830 PSD WB SI	Wide beam	4MX850	-
910629123126	4MX850 581 LED40S/840 PSD WB SI	Wide beam	4MX850	-
910629125426	4MX850 581 LED55S/830 PSD DA20 SI	Double asymmetric optic 20°	4MX850	-
910629125526	4MX850 581 LED55S/840 PSD DA20 SI	Double asymmetric optic 20°	4MX850	-

Order Code	Full Product Name	Optic type	Product	UL
			Family	mark
Code				
910629126226	4MX850 581 LED40S/830 PSD DA20 SI	Double asymmetric optic 20°	4MX850	-
910629126326	4MX850 581 LED40S/840 PSD DA20 SI	Double asymmetric optic 20°	4MX850	-

Order Code	Full Product Name	Optic type	Product	UL
			Family	mark
Code				
910629165726	4MX850 581 LED55S/840 PSD DA35 SI	Double asymmetric optic 35°	4MX850	-

Initial Performance (IEC Compliant)

Order Code	Full Product Name	Initial chromaticity	Init. Corr. Color Temperature	Init. Color	Initial LED luminaire efficacy	Initial luminous flux	Luminous flux tolerance	Initial input power	
				Rendering Index					
910500457964	4MX850 581 LED80S/840 PSD NB WH	(0.38, 0.38)	SDCM <3.5	4000 K	≥80	151 lm/W	8000 lm	+/-10%	53 W
910500457965	4MX850 581 LED80S/840 PSD WB WH	(0.38, 0.38)	SDCM <3.5	4000 K	≥80	151 lm/W	8000 lm	+/-10%	53 W
910500460003	4MX850 581 LED66S/840 PSD-CLO WB WH	(0.38, 0.38)	SDCM <3.5	4000 K	≥80	161 lm/W	6600 lm	+/-10%	41 W
910500460004	4MX850 581 LED80S/840 PSD-CLO WB WH	(0.38, 0.38)	SDCM <3.5	4000 K	≥80	151 lm/W	8000 lm	+/-10%	53 W
910500460007	4MX850 581 LED80S/840 PSD NB WH C-2R	(0.38, 0.38)	SDCM <3.5	4000 K	≥80	151 lm/W	8000 lm	+/-10%	53 W
910500460008	4MX850 581 LED80S/840 PSD WB WH C-2R	(0.38, 0.38)	SDCM <3.5	4000 K	≥80	151 lm/W	8000 lm	+/-10%	53 W
910500460009	4MX850 581 LED66S/840 PSD NB WH C-2R	(0.38, 0.38)	SDCM <3.5	4000 K	≥80	161 lm/W	6600 lm	+/-10%	41 W
910500460010	4MX850 581 LED66S/840 PSD WB WH C-2R	(0.38, 0.38)	SDCM <3.5	4000 K	≥80	161 lm/W	6600 lm	+/-10%	41 W
910500460048	4MX850 581 LED80S/840 PSD VWB WH	(0.38, 0.38)	SDCM <3.5	4000 K	≥80	151 lm/W	8000 lm	+/-10%	53 W
910500460074	4MX866 581 LED66S/840 PSD WB WH	(0.38, 0.38)	SDCM <3.5	4000 K	≥80	147 lm/W	6600 lm	+/-10%	45 W
910500460222	4MX850 581 LED66S/840 PSD DA20 WH	(0.38, 0.38)	SDCM <3.5	4000 K	≥80	161 lm/W	6600 lm	+/-10%	41 W
910500460223	4MX850 581 LED80S/840 PSD DA20 WH	(0.38, 0.38)	SDCM <3.5	4000 K	≥80	151 lm/W	8000 lm	+/-10%	53 W
910500460224	4MX850 581 LED66S/840 PSD DA20 WH C-2R	(0.38, 0.38)	SDCM <3.5	4000 K	≥80	161 lm/W	6600 lm	+/-10%	41 W
910500460225	4MX850 581 LED80S/840 PSD DA20 WH C-2R	(0.38, 0.38)	SDCM <3.5	4000 K	≥80	151 lm/W	8000 lm	+/-10%	53 W
910500460226	4MX850 581 LED66S/840 PSD-CLO DA20 WH	(0.38, 0.38)	SDCM <3.5	4000 K	≥80	161 lm/W	6600 lm	+/-10%	41 W
910500460227	4MX850 581 LED80S/840 PSD-CLO DA20 WH	(0.38, 0.38)	SDCM <3.5	4000 K	≥80	151 lm/W	8000 lm	+/-10%	53 W
910500460243	4MX866 581 LED55S/840 PSD DA20 WH	(0.38, 0.38)	SDCM <3.5	4000 K	≥80	149 lm/W	5500 lm	+/-10%	37 W
910500460244	4MX866 581 LED55S/840 PSD NB WH	(0.38, 0.38)	SDCM <3.5	4000 K	≥80	149 lm/W	5500 lm	+/-10%	37 W
910500460245	4MX866 581 LED55S/840 PSD WB WH	(0.38, 0.38)	SDCM <3.5	4000 K	≥80	149 lm/W	5500 lm	+/-10%	37 W

Maxos LED

Order Code	Full Product Name	Initial chromaticity	Init. Corr. Color Temperature	Init. Color Rendering Index	Initial LED luminaire efficacy	Initial luminous flux	Luminous flux tolerance	Initial input power
910500460249	4MX866 581 LED66S/840 PSD DA20 WH	(0.38, 0.38) SDCM <3.5	4000 K	≥80	147 lm/W	6600 lm	+/-10%	45 W
910500460250	4MX866 581 LED55S/840 PSD DA20 WH C-2R	(0.38, 0.38) SDCM <3.5	4000 K	≥80	149 lm/W	5500 lm	+/-10%	37 W
910500460251	4MX866 581 LED55S/840 PSD WH C-2R	(0.38, 0.38) SDCM <3.5	4000 K	≥80	149 lm/W	5500 lm	+/-10%	37 W
910500460252	4MX866 581 LED66S/840 PSD DA20 WH C-2R	(0.38, 0.38) SDCM <3.5	4000 K	≥80	147 lm/W	6600 lm	+/-10%	45 W
910500460253	4MX866 581 LED66S/840 PSD WH C-2R	(0.38, 0.38) SDCM <3.5	4000 K	≥80	147 lm/W	6600 lm	+/-10%	45 W
910500460273	4MX883 581 LED55S/840 PSD DA20 WH	(0.38, 0.38) SDCM <3.5	4000 K	≥80	149 lm/W	5500 lm	+/-10%	37 W
910500460274	4MX883 581 LED55S/840 PSD WH	(0.38, 0.38) SDCM <3.5	4000 K	≥80	149 lm/W	5500 lm	+/-10%	37 W
910500460275	4MX883 581 LED55S/840 PSD WH	(0.38, 0.38) SDCM <3.5	4000 K	≥80	149 lm/W	5500 lm	+/-10%	37 W
910500460279	4MX883 581 LED66S/840 PSD DA20 WH	(0.38, 0.38) SDCM <3.5	4000 K	≥80	147 lm/W	6600 lm	+/-10%	45 W
910500460280	4MX883 581 LED66S/840 PSD WH	(0.38, 0.38) SDCM <3.5	4000 K	≥80	147 lm/W	6600 lm	+/-10%	45 W
910500460281	4MX883 581 LED55S/840 PSD DA20 WH C-2R	(0.38, 0.38) SDCM <3.5	4000 K	≥80	149 lm/W	5500 lm	+/-10%	37 W
910500460282	4MX883 581 LED55S/840 PSD WH C-2R	(0.38, 0.38) SDCM <3.5	4000 K	≥80	149 lm/W	5500 lm	+/-10%	37 W
910500460283	4MX883 581 LED55S/840 PSD WH C-2R	(0.38, 0.38) SDCM <3.5	4000 K	≥80	149 lm/W	5500 lm	+/-10%	37 W
910500460284	4MX883 581 LED66S/840 PSD DA20 WH C-2R	(0.38, 0.38) SDCM <3.5	4000 K	≥80	147 lm/W	6600 lm	+/-10%	45 W
910500460285	4MX883 581 LED66S/840 PSD WH C-2R	(0.38, 0.38) SDCM <3.5	4000 K	≥80	147 lm/W	6600 lm	+/-10%	45 W
910500460393	4MX850 581 LED55S/840 PSD WH C-2R	(0.38, 0.38) SDCM <3.5	4000 K	≥80	167 lm/W	5500 lm	+/-10%	33 W
910500460486	4MX866 581 LED66S/840 PSD WH ELP1	(0.38, 0.38) SDCM <3.5	4000 K	≥80	147 lm/W	6600 lm	+/-10%	45 W
910500460488	4MX883 581 LED66S/840 PSD WH ELP3	(0.38, 0.38) SDCM <3.5	4000 K	≥80	147 lm/W	6600 lm	+/-10%	45 W
910500460490	4MX866 581 LED66S/840 PSD WH ELD1	(0.38, 0.38) SDCM <3.5	4000 K	≥80	147 lm/W	6600 lm	+/-10%	45 W
910500460492	4MX883 581 LED66S/840 PSD WH ELD3	(0.38, 0.38) SDCM <3.5	4000 K	≥80	147 lm/W	6600 lm	+/-10%	45 W
910500460595	4MX850 581 LED55S/840 PSD WH C-2R	(0.38, 0.38) SDCM <3.5	4000 K	≥80	167 lm/W	5500 lm	+/-10%	33 W
910629120426	4MX850 581 LED55S/830 PSD WH	(0.43, 0.40) SDCM <3.5	3000 K	≥80	157 lm/W	5500 lm	+/-10%	35 W
910629120526	4MX850 581 LED55S/840 PSD WH	(0.38, 0.38) SDCM <3.5	4000 K	≥80	167 lm/W	5500 lm	+/-10%	33 W
910629120626	4MX850 581 LED55S/830 PSD WH	(0.43, 0.40) SDCM <3.5	3000 K	≥80	157 lm/W	5500 lm	+/-10%	35 W
910629120726	4MX850 581 LED55S/840 PSD WH	(0.38, 0.38) SDCM <3.5	4000 K	≥80	167 lm/W	5500 lm	+/-10%	33 W

Maxos LED

Order Code	Full Product Name	Initial chromaticity	Init. Corr. Color Temperature	Init. Color Rendering Index	Initial LED luminaire efficacy	Initial luminous flux	Luminous flux tolerance	Initial input power
910629122026	4MX850 581 LED40S/830 PSD NB WH	(0.43, 0.40)	SDCM <3.5 3000 K	≥80	148 lm/W	4000 lm	+/-10%	27 W
910629122126	4MX850 581 LED40S/840 PSD NB WH	(0.38, 0.38)	SDCM <3.5 4000 K	≥80	160 lm/W	4000 lm	+/-10%	25 W
910629122226	4MX850 581 LED40S/830 PSD WB WH	(0.43, 0.40)	SDCM <3.5 3000 K	≥80	148 lm/W	4000 lm	+/-10%	27 W
910629122326	4MX850 581 LED40S/840 PSD WB WH	(0.38, 0.38)	SDCM <3.5 4000 K	≥80	160 lm/W	4000 lm	+/-10%	25 W
910629125026	4MX850 581 LED55S/830 PSD DA20 WH	(0.43, 0.40)	SDCM <3.5 3000 K	≥80	157 lm/W	5500 lm	+/-10%	35 W
910629125126	4MX850 581 LED55S/840 PSD DA20 WH	(0.38, 0.38)	SDCM <3.5 4000 K	≥80	167 lm/W	5500 lm	+/-10%	33 W
910629125826	4MX850 581 LED40S/830 PSD DA20 WH	(0.43, 0.40)	SDCM <3.5 3000 K	≥80	148 lm/W	4000 lm	+/-10%	27 W
910629125926	4MX850 581 LED40S/840 PSD DA20 WH	(0.38, 0.38)	SDCM <3.5 4000 K	≥80	160 lm/W	4000 lm	+/-10%	25 W
910629160326	4MX850 581 LED66S/840 PSD WB WH	(0.38, 0.38)	SDCM <3.5 4000 K	≥80	161 lm/W	6600 lm	+/-10%	41 W
910629160426	4MX850 581 LED66S/840 PSD NB WH	(0.38, 0.38)	SDCM <3.5 4000 K	≥80	161 lm/W	6600 lm	+/-10%	41 W
910629165226	4MX883 581 LED66S/840 PSD WB WH C-2R	(0.38, 0.38)	SDCM <3.5 4000 K	≥80	147 lm/W	6600 lm	+/-10%	45 W
910629165326	4MX866 581 LED66S/840 PSD WB WH C-2R	(0.38, 0.38)	SDCM <3.5 4000 K	≥80	147 lm/W	6600 lm	+/-10%	45 W
910629166126	4MX850 581 LED55S/840 PSD DA35 WH	(0.38, 0.38)	SDCM <3.5 4000 K	≥80	167 lm/W	5500 lm	+/-10%	33 W
910500460013	4MX850 491 LED66S/840 PSD-CLO WB WH	(0.38, 0.38)	SDCM <3.5 4000 K	≥80	161 lm/W	6600 lm	+/-10%	41 W
910500460014	4MX850 491 LED80S/840 PSD-CLO WB WH	(0.38, 0.38)	SDCM <3.5 4000 K	≥80	151 lm/W	8000 lm	+/-10%	53 W
910500460016	4MX850 491 LED66S/840 PSD-CLO NB WH	(0.38, 0.38)	SDCM <3.5 4000 K	≥80	161 lm/W	6600 lm	+/-10%	41 W
910500460017	4MX850 491 LED80S/840 PSD-CLO NB WH	(0.38, 0.38)	SDCM <3.5 4000 K	≥80	151 lm/W	8000 lm	+/-10%	53 W
910500460023	4MX850 491 LED80S/840 PSD-CLO DA20 WH	(0.38, 0.38)	SDCM <3.5 4000 K	≥80	151 lm/W	8000 lm	+/-10%	53 W
910500460041	4MX866 491 LED66S/840 PSD WB WH C-2R	(0.38, 0.38)	SDCM <3.5 4000 K	≥80	147 lm/W	6600 lm	+/-10%	45 W
910500460049	4MX850 491 LED80S/840 PSD VWB WH	(0.38, 0.38)	SDCM <3.5 4000 K	≥80	151 lm/W	8000 lm	+/-10%	53 W
910500460059	4MX866 491 LED55S/840 PSD WB WH	(0.38, 0.38)	SDCM <3.5 4000 K	≥80	149 lm/W	5500 lm	+/-10%	37 W
910500460075	4MX850 491 LED80S/840 PSD VWB WH C-2R	(0.38, 0.38)	SDCM <3.5 4000 K	≥80	151 lm/W	8000 lm	+/-10%	53 W
910500460080	4MX866 491 LED55S/840 PSD WB WH C-2R	(0.38, 0.38)	SDCM <3.5 4000 K	≥80	149 lm/W	5500 lm	+/-10%	37 W
910500460093	4MX866 491 LED55S/840 PSD NB WH	(0.38, 0.38)	SDCM <3.5 4000 K	≥80	149 lm/W	5500 lm	+/-10%	37 W
910500460215	4MX850 491 LED80S/840 PSD DA20 WH	(0.38, 0.38)	SDCM <3.5 4000 K	≥80	151 lm/W	8000 lm	+/-10%	53 W

Order Code	Full Product Name	Initial chromaticity	Init. Corr. Color Temperature	Init. Color Rendering Index	Initial LED luminaire efficacy	Initial luminous flux	Luminous flux tolerance	Initial input power
910500460216	4MX850 491 LED66S/840 PSD DA20 WH C-2R	(0.38, 0.38) SDCM <3.5	4000 K	≥80	161 lm/W	6600 lm	+/-10%	41 W
910500460217	4MX850 491 LED66S/840 PSD NB WH C-2R	(0.38, 0.38) SDCM <3.5	4000 K	≥80	161 lm/W	6600 lm	+/-10%	41 W
910500460218	4MX850 491 LED66S/840 PSD WB WH C-2R	(0.38, 0.38) SDCM <3.5	4000 K	≥80	161 lm/W	6600 lm	+/-10%	41 W
910500460219	4MX850 491 LED80S/840 PSD DA20 WH C-2R	(0.38, 0.38) SDCM <3.5	4000 K	≥80	151 lm/W	8000 lm	+/-10%	53 W
910500460220	4MX850 491 LED80S/840 PSD NB WH C-2R	(0.38, 0.38) SDCM <3.5	4000 K	≥80	151 lm/W	8000 lm	+/-10%	53 W
910500460221	4MX850 491 LED80S/840 PSD WB WH C-2R	(0.38, 0.38) SDCM <3.5	4000 K	≥80	151 lm/W	8000 lm	+/-10%	53 W
910500460231	4MX866 491 LED55S/840 PSD DA20 WH	(0.38, 0.38) SDCM <3.5	4000 K	≥80	149 lm/W	5500 lm	+/-10%	37 W
910500460235	4MX866 491 LED66S/840 PSD DA20 WH	(0.38, 0.38) SDCM <3.5	4000 K	≥80	147 lm/W	6600 lm	+/-10%	45 W
910500460236	4MX866 491 LED66S/840 PSD WB WH	(0.38, 0.38) SDCM <3.5	4000 K	≥80	147 lm/W	6600 lm	+/-10%	45 W
910500460237	4MX866 491 LED55S/840 PSD DA20 WH C-2R	(0.38, 0.38) SDCM <3.5	4000 K	≥80	149 lm/W	5500 lm	+/-10%	37 W
910500460238	4MX866 491 LED55S/840 PSD NB WH C-2R	(0.38, 0.38) SDCM <3.5	4000 K	≥80	149 lm/W	5500 lm	+/-10%	37 W
910500460239	4MX866 491 LED66S/840 PSD DA20 WH C-2R	(0.38, 0.38) SDCM <3.5	4000 K	≥80	147 lm/W	6600 lm	+/-10%	45 W
910500460240	4MX866 491 LED66S/840 PSD NB WH C-2R	(0.38, 0.38) SDCM <3.5	4000 K	≥80	147 lm/W	6600 lm	+/-10%	45 W
910500460257	4MX883 491 LED55S/840 PSD DA20 WH	(0.38, 0.38) SDCM <3.5	4000 K	≥80	149 lm/W	5500 lm	+/-10%	37 W
910500460258	4MX883 491 LED55S/840 PSD NB WH	(0.38, 0.38) SDCM <3.5	4000 K	≥80	149 lm/W	5500 lm	+/-10%	37 W
910500460259	4MX883 491 LED55S/840 PSD WB WH	(0.38, 0.38) SDCM <3.5	4000 K	≥80	149 lm/W	5500 lm	+/-10%	37 W
910500460263	4MX883 491 LED66S/840 PSD DA20 WH	(0.38, 0.38) SDCM <3.5	4000 K	≥80	147 lm/W	6600 lm	+/-10%	45 W
910500460264	4MX883 491 LED66S/840 PSD NB WH	(0.38, 0.38) SDCM <3.5	4000 K	≥80	147 lm/W	6600 lm	+/-10%	45 W
910500460265	4MX883 491 LED66S/840 PSD WB WH	(0.38, 0.38) SDCM <3.5	4000 K	≥80	147 lm/W	6600 lm	+/-10%	45 W
910500460266	4MX883 491 LED55S/840 PSD DA20 WH C-2R	(0.38, 0.38) SDCM <3.5	4000 K	≥80	149 lm/W	5500 lm	+/-10%	37 W
910500460267	4MX883 491 LED55S/840 PSD NB WH C-2R	(0.38, 0.38) SDCM <3.5	4000 K	≥80	149 lm/W	5500 lm	+/-10%	37 W
910500460268	4MX883 491 LED55S/840 PSD WB WH C-2R	(0.38, 0.38) SDCM <3.5	4000 K	≥80	149 lm/W	5500 lm	+/-10%	37 W
910500460269	4MX883 491 LED66S/840 PSD DA20 WH C-2R	(0.38, 0.38) SDCM <3.5	4000 K	≥80	147 lm/W	6600 lm	+/-10%	45 W
910500460270	4MX883 491 LED66S/840 PSD NB WH C-2R	(0.38, 0.38) SDCM <3.5	4000 K	≥80	147 lm/W	6600 lm	+/-10%	45 W
910500460271	4MX883 491 LED66S/840 PSD WB WH C-2R	(0.38, 0.38) SDCM <3.5	4000 K	≥80	147 lm/W	6600 lm	+/-10%	45 W

Maxos LED

Order Code	Full Product Name	Initial chromaticity	Init. Corr. Color Temperature	Init. Color Rendering Index	Initial LED luminaire efficacy	Initial luminous flux	Luminous flux tolerance	Initial input power
910500460391	4MX850 491 LED55S/840 PSD WB WH C-2R	(0.38, 0.38) SDCM <3.5	4000 K	≥80	167 lm/W	5500 lm	+/-10%	33 W
910500460415	4MX850 491 LED66S/840 PSD VWB WH C-2R	(0.38, 0.38) SDCM <3.5	4000 K	≥80	161 lm/W	6600 lm	+/-10%	41 W
910500460420	4MX850 491 LED40S/840 PSD WB WH C-2R	(0.38, 0.38) SDCM <3.5	4000 K	≥80	160 lm/W	4000 lm	+/-10%	25 W
910500460485	4MX866 491 LED66S/840 PSD WB WH ELP1	(0.38, 0.38) SDCM <3.5	4000 K	≥80	147 lm/W	6600 lm	+/-10%	45 W
910500460487	4MX883 491 LED66S/840 PSD WB WH ELP3	(0.38, 0.38) SDCM <3.5	4000 K	≥80	147 lm/W	6600 lm	+/-10%	45 W
910500460489	4MX866 491 LED66S/840 PSD WB WH ELD1	(0.38, 0.38) SDCM <3.5	4000 K	≥80	147 lm/W	6600 lm	+/-10%	45 W
910500460491	4MX883 491 LED66S/840 PSD WB WH ELD3	(0.38, 0.38) SDCM <3.5	4000 K	≥80	147 lm/W	6600 lm	+/-10%	45 W
910500460537	4MX850 491 LED40S/840 PSD NB WH C-2R	(0.38, 0.38) SDCM <3.5	4000 K	≥80	160 lm/W	4000 lm	+/-10%	25 W
910500460538	4MX850 491 LED55S/840 PSD NB WH C-2R	(0.38, 0.38) SDCM <3.5	4000 K	≥80	167 lm/W	5500 lm	+/-10%	33 W
910500460562	4MX850 491 LED80S/840 PSD A20 WH C-2R	-	-	-	-	-	-	-
910629120026	4MX850 491 LED55S/830 PSD NB WH	(0.43, 0.40) SDCM <3.5	3000 K	≥80	157 lm/W	5500 lm	+/-10%	35 W
910629120126	4MX850 491 LED55S/840 PSD NB WH	(0.38, 0.38) SDCM <3.5	4000 K	≥80	167 lm/W	5500 lm	+/-10%	33 W
910629120226	4MX850 491 LED55S/830 PSD WB WH	(0.43, 0.40) SDCM <3.5	3000 K	≥80	157 lm/W	5500 lm	+/-10%	35 W
910629120326	4MX850 491 LED55S/840 PSD WB WH	(0.38, 0.38) SDCM <3.5	4000 K	≥80	167 lm/W	5500 lm	+/-10%	33 W
910629121626	4MX850 491 LED40S/830 PSD NB WH	(0.43, 0.40) SDCM <3.5	3000 K	≥80	148 lm/W	4000 lm	+/-10%	27 W
910629121726	4MX850 491 LED40S/840 PSD NB WH	(0.38, 0.38) SDCM <3.5	4000 K	≥80	160 lm/W	4000 lm	+/-10%	25 W
910629121826	4MX850 491 LED40S/830 PSD WB WH	(0.43, 0.40) SDCM <3.5	3000 K	≥80	148 lm/W	4000 lm	+/-10%	27 W
910629121926	4MX850 491 LED40S/840 PSD WB WH	(0.38, 0.38) SDCM <3.5	4000 K	≥80	160 lm/W	4000 lm	+/-10%	25 W
910629124826	4MX850 491 LED55S/830 PSD DA20 WH	(0.43, 0.40) SDCM <3.5	3000 K	≥80	157 lm/W	5500 lm	+/-10%	35 W
910629124926	4MX850 491 LED55S/840 PSD DA20 WH	(0.38, 0.38) SDCM <3.5	4000 K	≥80	167 lm/W	5500 lm	+/-10%	33 W
910629125626	4MX850 491 LED40S/830 PSD DA20 WH	(0.43, 0.40) SDCM <3.5	3000 K	≥80	148 lm/W	4000 lm	+/-10%	27 W
910629125726	4MX850 491 LED40S/840 PSD DA20 WH	(0.38, 0.38) SDCM <3.5	4000 K	≥80	160 lm/W	4000 lm	+/-10%	25 W
910629158026	4MX850 491 LED66S/840 PSD DA20 WH	(0.38, 0.38) SDCM <3.5	4000 K	≥80	161 lm/W	6600 lm	+/-10%	41 W
910629158126	4MX850 491 LED66S/840 PSD WB WH	(0.38, 0.38) SDCM <3.5	4000 K	≥80	161 lm/W	6600 lm	+/-10%	41 W
910629158226	4MX850 491 LED66S/840 PSD NB WH	(0.38, 0.38) SDCM <3.5	4000 K	≥80	161 lm/W	6600 lm	+/-10%	41 W

Maxos LED

Order Code	Full Product Name	Initial chromaticity	Init. Corr. Color Temperature	Init. Color Rendering Index	Initial LED luminaire efficacy	Initial luminous flux	Luminous flux tolerance	Initial input power
910629160026	4MX850 491 LED66S/830 PSD DA20 WH	(0.43, 0.40) SDCM <3.5	3000 K	≥80	161 lm/W	6600 lm	+/-10%	44 W
910629160126	4MX850 491 LED66S/830 PSD WB WH	(0.43, 0.40) SDCM <3.5	3000 K	≥80	161 lm/W	6600 lm	+/-10%	44 W
910629160226	4MX850 491 LED66S/830 PSD NB WH	(0.43, 0.40) SDCM <3.5	3000 K	≥80	161 lm/W	6600 lm	+/-10%	44 W
910629160526	4MX850 491 LED40S/840 PSD A20 WH	(0.38, 0.38) SDCM <3.5	4000 K	≥80	160 lm/W	4000 lm	+/-10%	25 W
910629160626	4MX850 491 LED55S/840 PSD A20 WH	(0.38, 0.38) SDCM <3.5	4000 K	≥80	167 lm/W	5500 lm	+/-10%	33 W
910629160726	4MX850 491 LED55S/830 PSD A20 WH	(0.43, 0.40) SDCM <3.5	3000 K	≥80	157 lm/W	5500 lm	+/-10%	35 W
910629161026	4MX850 491 LED40S/830 PSD A20 WH	(0.43, 0.40) SDCM <3.5	3000 K	≥80	148 lm/W	4000 lm	+/-10%	27 W
910629162126	4MX850 491 LED66S/840 PSD A20 WH	(0.38, 0.38) SDCM <3.5	4000 K	≥80	161 lm/W	6600 lm	+/-10%	41 W
910629165926	4MX850 491 LED55S/840 PSD DA35 WH	(0.38, 0.38) SDCM <3.5	4000 K	≥80	167 lm/W	5500 lm	+/-10%	33 W
910629166026	4MX850 491 LED66S/840 PSD DA35 WH	(0.38, 0.38) SDCM <3.5	4000 K	≥80	161 lm/W	6600 lm	+/-10%	41 W
910629167426	4MX850 491 LED80S/840 PSD NB WH	(0.38, 0.38) SDCM <3.5	4000 K	≥80	151 lm/W	8000 lm	+/-10%	53 W
910629167526	4MX850 491 LED80S/840 PSD WB WH	(0.38, 0.38) SDCM <3.5	4000 K	≥80	151 lm/W	8000 lm	+/-10%	53 W
910629167626	4MX866 491 LED66S/840 PSD NB WH	(0.38, 0.38) SDCM <3.5	4000 K	≥80	147 lm/W	6600 lm	+/-10%	45 W
910500460502	4MX850 491 LED80S/840 PSD WB SI	-	-	-	-	-	-	-
910629120826	4MX850 491 LED55S/830 PSD NB SI	(0.43, 0.40) SDCM <3.5	3000 K	≥80	157 lm/W	5500 lm	+/-10%	35 W
910629120926	4MX850 491 LED55S/840 PSD NB SI	(0.38, 0.38) SDCM <3.5	4000 K	≥80	167 lm/W	5500 lm	+/-10%	33 W
910629121026	4MX850 491 LED55S/830 PSD WB SI	(0.43, 0.40) SDCM <3.5	3000 K	≥80	157 lm/W	5500 lm	+/-10%	35 W
910629121126	4MX850 491 LED55S/840 PSD WB SI	(0.38, 0.38) SDCM <3.5	4000 K	≥80	167 lm/W	5500 lm	+/-10%	33 W
910629122426	4MX850 491 LED40S/830 PSD NB SI	(0.43, 0.40) SDCM <3.5	3000 K	≥80	148 lm/W	4000 lm	+/-10%	27 W
910629122526	4MX850 491 LED40S/840 PSD NB SI	(0.38, 0.38) SDCM <3.5	4000 K	≥80	160 lm/W	4000 lm	+/-10%	25 W
910629122626	4MX850 491 LED40S/830 PSD WB SI	(0.43, 0.40) SDCM <3.5	3000 K	≥80	148 lm/W	4000 lm	+/-10%	27 W
910629122726	4MX850 491 LED40S/840 PSD WB SI	(0.38, 0.38) SDCM <3.5	4000 K	≥80	160 lm/W	4000 lm	+/-10%	25 W
910629125226	4MX850 491 LED55S/830 PSD DA20 SI	(0.43, 0.40) SDCM <3.5	3000 K	≥80	157 lm/W	5500 lm	+/-10%	35 W
910629125326	4MX850 491 LED55S/840 PSD DA20 SI	(0.38, 0.38) SDCM <3.5	4000 K	≥80	167 lm/W	5500 lm	+/-10%	33 W
910629126026	4MX850 491 LED40S/830 PSD DA20 SI	(0.43, 0.40) SDCM <3.5	3000 K	≥80	148 lm/W	4000 lm	+/-10%	27 W

Maxos LED

Order Code	Full Product Name	Initial chromaticity	Init. Corr. Color		Init. Color	Initial LED luminaire efficacy	Initial luminous flux	Luminous flux tolerance	Initial input power
			Temperature		Rendering Index				
910629126126	4MX850 491 LED40S/840 PSD DA20 SI	(0.38, 0.38) SDCM <3.5	4000 K		≥80	160 lm/W	4000 lm	+/-10%	25 W
910629160826	4MX850 491 LED55S/830 PSD A20 SI	(0.43, 0.40) SDCM <3.5	3000 K		≥80	157 lm/W	5500 lm	+/-10%	35 W
910629160926	4MX850 491 LED55S/840 PSD A20 SI	(0.38, 0.38) SDCM <3.5	4000 K		≥80	167 lm/W	5500 lm	+/-10%	33 W
910629161126	4MX850 491 LED40S/830 PSD A20 SI	(0.43, 0.40) SDCM <3.5	3000 K		≥80	148 lm/W	4000 lm	+/-10%	27 W
910629161226	4MX850 491 LED40S/840 PSD A20 SI	(0.38, 0.38) SDCM <3.5	4000 K		≥80	160 lm/W	4000 lm	+/-10%	25 W
910629162226	4MX850 491 LED66S/840 PSD A20 SI	(0.38, 0.38) SDCM <3.5	4000 K		≥80	161 lm/W	6600 lm	+/-10%	41 W
910629165626	4MX850 491 LED55S/840 PSD DA35 SI	(0.38, 0.38) SDCM <3.5	4000 K		≥80	167 lm/W	5500 lm	+/-10%	33 W
910629121226	4MX850 581 LED55S/830 PSD NB SI	(0.43, 0.40) SDCM <3.5	3000 K		≥80	157 lm/W	5500 lm	+/-10%	35 W
910629121326	4MX850 581 LED55S/840 PSD NB SI	(0.38, 0.38) SDCM <3.5	4000 K		≥80	167 lm/W	5500 lm	+/-10%	33 W
910629121426	4MX850 581 LED55S/830 PSD WB SI	(0.43, 0.40) SDCM <3.5	3000 K		≥80	157 lm/W	5500 lm	+/-10%	35 W
910629121526	4MX850 581 LED55S/840 PSD WB SI	(0.38, 0.38) SDCM <3.5	4000 K		≥80	167 lm/W	5500 lm	+/-10%	33 W
910629122826	4MX850 581 LED40S/830 PSD NB SI	(0.43, 0.40) SDCM <3.5	3000 K		≥80	148 lm/W	4000 lm	+/-10%	27 W
910629122926	4MX850 581 LED40S/840 PSD NB SI	(0.38, 0.38) SDCM <3.5	4000 K		≥80	160 lm/W	4000 lm	+/-10%	25 W
910629123026	4MX850 581 LED40S/830 PSD WB SI	(0.43, 0.40) SDCM <3.5	3000 K		≥80	148 lm/W	4000 lm	+/-10%	27 W
910629123126	4MX850 581 LED40S/840 PSD WB SI	(0.38, 0.38) SDCM <3.5	4000 K		≥80	160 lm/W	4000 lm	+/-10%	25 W
910629125426	4MX850 581 LED55S/830 PSD DA20 SI	(0.43, 0.40) SDCM <3.5	3000 K		≥80	157 lm/W	5500 lm	+/-10%	35 W
910629125526	4MX850 581 LED55S/840 PSD DA20 SI	(0.38, 0.38) SDCM <3.5	4000 K		≥80	167 lm/W	5500 lm	+/-10%	33 W
910629126226	4MX850 581 LED40S/830 PSD DA20 SI	(0.43, 0.40) SDCM <3.5	3000 K		≥80	148 lm/W	4000 lm	+/-10%	27 W
910629126326	4MX850 581 LED40S/840 PSD DA20 SI	(0.38, 0.38) SDCM <3.5	4000 K		≥80	160 lm/W	4000 lm	+/-10%	25 W
910629165726	4MX850 581 LED55S/840 PSD DA35 SI	(0.38, 0.38) SDCM <3.5	4000 K		≥80	167 lm/W	5500 lm	+/-10%	33 W

Mechanical and Housing

Order Code	Full Product Name	Trunking		Order Code	Full Product Name	Trunking	
		Color	length			Color	length
910500457964	4MX850 581 LED80S/840 PSD NB WH	White	581	910500460008	4MX850 581 LED80S/840 PSD WB WH C-2R	White	581
910500457965	4MX850 581 LED80S/840 PSD WB WH	White	581	910500460009	4MX850 581 LED66S/840 PSD NB WH C-2R	White	581
910500460003	4MX850 581 LED66S/840 PSD-CLO WB WH	White	581	910500460010	4MX850 581 LED66S/840 PSD WB WH C-2R	White	581
910500460004	4MX850 581 LED80S/840 PSD-CLO WB WH	White	581	910500460048	4MX850 581 LED80S/840 PSD VWB WH	White	581
910500460007	4MX850 581 LED80S/840 PSD NB WH C-2R	White	581	910500460074	4MX866 581 LED66S/840 PSD WB WH	White	581

Maxos LED

Order Code	Full Product Name	Color	Trunking	
			length	
910500460222	4MX850 581 LED66S/840 PSD DA20 WH	White	581	
910500460223	4MX850 581 LED80S/840 PSD DA20 WH	White	581	
910500460224	4MX850 581 LED66S/840 PSD DA20 WH C-2R	White	581	
910500460225	4MX850 581 LED80S/840 PSD DA20 WH C-2R	White	581	
910500460226	4MX850 581 LED66S/840 PSD-CLO DA20 WH	White	581	
910500460227	4MX850 581 LED80S/840 PSD-CLO DA20 WH	White	581	
910500460243	4MX866 581 LED55S/840 PSD DA20 WH	White	581	
910500460244	4MX866 581 LED55S/840 PSD NB WH	White	581	
910500460245	4MX866 581 LED55S/840 PSD WB WH	White	581	
910500460249	4MX866 581 LED66S/840 PSD DA20 WH	White	581	
910500460250	4MX866 581 LED55S/840 PSD DA20 WH C-2R	White	581	
910500460251	4MX866 581 LED55S/840 PSD WB WH C-2R	White	581	
910500460252	4MX866 581 LED66S/840 PSD DA20 WH C-2R	White	581	
910500460253	4MX866 581 LED66S/840 PSD NB WH C-2R	White	581	
910500460273	4MX883 581 LED55S/840 PSD DA20 WH	White	581	
910500460274	4MX883 581 LED55S/840 PSD NB WH	White	581	
910500460275	4MX883 581 LED55S/840 PSD WB WH	White	581	
910500460279	4MX883 581 LED66S/840 PSD DA20 WH	White	581	
910500460280	4MX883 581 LED66S/840 PSD WB WH	White	581	
910500460281	4MX883 581 LED55S/840 PSD DA20 WH C-2R	White	581	
910500460282	4MX883 581 LED55S/840 PSD NB WH C-2R	White	581	
910500460283	4MX883 581 LED55S/840 PSD WB WH C-2R	White	581	
910500460284	4MX883 581 LED66S/840 PSD DA20 WH C-2R	White	581	
910500460285	4MX883 581 LED66S/840 PSD NB WH C-2R	White	581	
910500460393	4MX850 581 LED55S/840 PSD NB WH C-2R	White	-	
910500460486	4MX866 581 LED66S/840 PSD WB WH ELP1	White	-	
910500460488	4MX883 581 LED66S/840 PSD WB WH ELP3	White	-	
910500460490	4MX866 581 LED66S/840 PSD WB WH ELD1	White	-	
910500460492	4MX883 581 LED66S/840 PSD WB WH ELD3	White	-	
910500460595	4MX850 581 LED55S/840 PSD WB WH C-2R	White	-	
910629120426	4MX850 581 LED55S/830 PSD NB WH	White	581	
910629120526	4MX850 581 LED55S/840 PSD NB WH	White	581	
910629120626	4MX850 581 LED55S/830 PSD WB WH	White	581	
910629120726	4MX850 581 LED55S/840 PSD WB WH	White	581	
910629122026	4MX850 581 LED40S/830 PSD NB WH	White	581	
910629122126	4MX850 581 LED40S/840 PSD NB WH	White	581	
910629122226	4MX850 581 LED40S/830 PSD WB WH	White	581	
910629122326	4MX850 581 LED40S/840 PSD WB WH	White	581	
910629125026	4MX850 581 LED55S/830 PSD DA20 WH	White	581	
910629125126	4MX850 581 LED55S/840 PSD DA20 WH	White	581	
910629125826	4MX850 581 LED40S/830 PSD DA20 WH	White	581	
910629125926	4MX850 581 LED40S/840 PSD DA20 WH	White	581	
910629160326	4MX850 581 LED66S/840 PSD WB WH	White	581	
910629160426	4MX850 581 LED66S/840 PSD NB WH	White	581	
910629165226	4MX883 581 LED66S/840 PSD WB WH C-2R	White	581	
910629165326	4MX866 581 LED66S/840 PSD WB WH C-2R	White	581	
910629166126	4MX850 581 LED55S/840 PSD DA35 WH	White	581	
910500460013	4MX850 491 LED66S/840 PSD-CLO WB WH	White	491	
910500460014	4MX850 491 LED80S/840 PSD-CLO WB WH	White	491	
910500460016	4MX850 491 LED66S/840 PSD-CLO NB WH	White	491	
910500460017	4MX850 491 LED80S/840 PSD-CLO NB WH	White	491	

Order Code	Full Product Name	Color	Trunking	
			length	
910500460023	4MX850 491 LED80S/840 PSD-CLO DA20 WH	White	491	
910500460041	4MX866 491 LED66S/840 PSD WB WH C-2R	White	491	
910500460049	4MX850 491 LED80S/840 PSD VWB WH	White	491	
910500460059	4MX866 491 LED55S/840 PSD WB WH	White	491	
910500460075	4MX850 491 LED80S/840 PSD VWB WH C-2R	White	-	
910500460080	4MX866 491 LED55S/840 PSD WB WH C-2R	White	491	
910500460093	4MX866 491 LED55S/840 PSD NB WH	White	491	
910500460215	4MX850 491 LED80S/840 PSD DA20 WH	White	491	
910500460216	4MX850 491 LED66S/840 PSD DA20 WH C-2R	White	491	
910500460217	4MX850 491 LED66S/840 PSD NB WH C-2R	White	491	
910500460218	4MX850 491 LED66S/840 PSD WB WH C-2R	White	491	
910500460219	4MX850 491 LED80S/840 PSD DA20 WH C-2R	White	491	
910500460220	4MX850 491 LED80S/840 PSD NB WH C-2R	White	491	
910500460221	4MX850 491 LED80S/840 PSD WB WH C-2R	White	491	
910500460231	4MX866 491 LED55S/840 PSD DA20 WH	White	491	
910500460235	4MX866 491 LED66S/840 PSD DA20 WH	White	491	
910500460236	4MX866 491 LED66S/840 PSD WB WH	White	491	
910500460237	4MX866 491 LED55S/840 PSD DA20 WH C-2R	White	491	
910500460238	4MX866 491 LED55S/840 PSD NB WH C-2R	White	491	
910500460239	4MX866 491 LED66S/840 PSD DA20 WH C-2R	White	491	
910500460240	4MX866 491 LED66S/840 PSD NB WH C-2R	White	491	
910500460257	4MX883 491 LED55S/840 PSD DA20 WH	White	491	
910500460258	4MX883 491 LED55S/840 PSD NB WH	White	491	
910500460259	4MX883 491 LED55S/840 PSD WB WH	White	491	
910500460263	4MX883 491 LED66S/840 PSD DA20 WH	White	491	
910500460264	4MX883 491 LED66S/840 PSD NB WH	White	491	
910500460265	4MX883 491 LED66S/840 PSD WB WH	White	491	
910500460266	4MX883 491 LED55S/840 PSD DA20 WH C-2R	White	491	
910500460267	4MX883 491 LED55S/840 PSD NB WH C-2R	White	491	
910500460268	4MX883 491 LED55S/840 PSD WB WH C-2R	White	491	
910500460269	4MX883 491 LED66S/840 PSD DA20 WH C-2R	White	491	
910500460270	4MX883 491 LED66S/840 PSD NB WH C-2R	White	491	
910500460271	4MX883 491 LED66S/840 PSD WB WH C-2R	White	491	
910500460391	4MX850 491 LED55S/840 PSD WB WH C-2R	White	-	
910500460415	4MX850 491 LED66S/840 PSD VWB WH C-2R	White	-	
910500460420	4MX850 491 LED40S/840 PSD WB WH C-2R	White	-	
910500460485	4MX866 491 LED66S/840 PSD WB WH ELP1	White	-	
910500460487	4MX883 491 LED66S/840 PSD WB WH ELP3	White	-	
910500460489	4MX866 491 LED66S/840 PSD WB WH ELD1	White	-	
910500460491	4MX883 491 LED66S/840 PSD WB WH ELD3	White	-	
910500460537	4MX850 491 LED40S/840 PSD NB WH C-2R	White	-	
910500460538	4MX850 491 LED55S/840 PSD NB WH C-2R	White	-	
910500460562	4MX850 491 LED80S/840 PSD A20 WH C-2R	-	-	
910629120026	4MX850 491 LED55S/830 PSD NB WH	White	491	
910629120126	4MX850 491 LED55S/840 PSD NB WH	White	491	
910629120226	4MX850 491 LED55S/830 PSD WB WH	White	491	
910629120326	4MX850 491 LED55S/840 PSD WB WH	White	491	
910629121626	4MX850 491 LED40S/830 PSD NB WH	White	491	
910629121726	4MX850 491 LED40S/840 PSD NB WH	White	491	
910629121826	4MX850 491 LED40S/830 PSD WB WH	White	491	
910629121926	4MX850 491 LED40S/840 PSD WB WH	White	491	

Maxos LED

Order Code	Full Product Name	Trunking	
		Color	length
910629124826	4MX850 491 LED55S/830 PSD DA20 WH	White	491
910629124926	4MX850 491 LED55S/840 PSD DA20 WH	White	491
910629125626	4MX850 491 LED40S/830 PSD DA20 WH	White	491
910629125726	4MX850 491 LED40S/840 PSD DA20 WH	White	491
910629158026	4MX850 491 LED66S/840 PSD DA20 WH	White	491
910629158126	4MX850 491 LED66S/840 PSD WB WH	White	491
910629158226	4MX850 491 LED66S/840 PSD NB WH	White	491
910629160026	4MX850 491 LED66S/830 PSD DA20 WH	White	491
910629160126	4MX850 491 LED66S/830 PSD WB WH	White	491
910629160226	4MX850 491 LED66S/830 PSD NB WH	White	491
910629160526	4MX850 491 LED40S/840 PSD A20 WH	White	491
910629160626	4MX850 491 LED55S/840 PSD A20 WH	White	491
910629160726	4MX850 491 LED55S/830 PSD A20 WH	White	491
910629161026	4MX850 491 LED40S/830 PSD A20 WH	White	491
910629162126	4MX850 491 LED66S/840 PSD A20 WH	White	491
910629165926	4MX850 491 LED55S/840 PSD DA35 WH	White	491
910629166026	4MX850 491 LED66S/840 PSD DA35 WH	White	491
910629167426	4MX850 491 LED80S/840 PSD NB WH	White	491
910629167526	4MX850 491 LED80S/840 PSD WB WH	White	491
910629167626	4MX866 491 LED66S/840 PSD NB WH	White	491
910500460502	4MX850 491 LED80S/840 PSD WB SI	-	-
910629120826	4MX850 491 LED55S/830 PSD NB SI	Silver	491
910629120926	4MX850 491 LED55S/840 PSD NB SI	Silver	491
910629121026	4MX850 491 LED55S/830 PSD WB SI	Silver	491
910629121126	4MX850 491 LED55S/840 PSD WB SI	Silver	491
910629122426	4MX850 491 LED40S/830 PSD NB SI	Silver	491

Order Code	Full Product Name	Trunking	
		Color	length
910629122526	4MX850 491 LED40S/840 PSD NB SI	Silver	491
910629122626	4MX850 491 LED40S/830 PSD WB SI	Silver	491
910629122726	4MX850 491 LED40S/840 PSD WB SI	Silver	491
910629125226	4MX850 491 LED55S/830 PSD DA20 SI	Silver	491
910629125326	4MX850 491 LED55S/840 PSD DA20 SI	Silver	491
910629126026	4MX850 491 LED40S/830 PSD DA20 SI	Silver	491
910629126126	4MX850 491 LED40S/840 PSD DA20 SI	Silver	491
910629160826	4MX850 491 LED55S/830 PSD A20 SI	Silver	491
910629160926	4MX850 491 LED55S/840 PSD A20 SI	Silver	491
910629161126	4MX850 491 LED40S/830 PSD A20 SI	Silver	491
910629161226	4MX850 491 LED40S/840 PSD A20 SI	Silver	491
910629162226	4MX850 491 LED66S/840 PSD A20 SI	Silver	491
910629165626	4MX850 491 LED55S/840 PSD DA35 SI	Silver	491
910629121226	4MX850 581 LED55S/830 PSD NB SI	Silver	581
910629121326	4MX850 581 LED55S/840 PSD NB SI	Silver	581
910629121426	4MX850 581 LED55S/830 PSD WB SI	Silver	581
910629121526	4MX850 581 LED55S/840 PSD WB SI	Silver	581
910629122826	4MX850 581 LED40S/830 PSD NB SI	Silver	581
910629122926	4MX850 581 LED40S/840 PSD NB SI	Silver	581
910629123026	4MX850 581 LED40S/830 PSD WB SI	Silver	581
910629123126	4MX850 581 LED40S/840 PSD WB SI	Silver	581
910629125426	4MX850 581 LED55S/830 PSD DA20 SI	Silver	581
910629125526	4MX850 581 LED55S/840 PSD DA20 SI	Silver	581
910629126226	4MX850 581 LED40S/830 PSD DA20 SI	Silver	581
910629126326	4MX850 581 LED40S/840 PSD DA20 SI	Silver	581
910629165726	4MX850 581 LED55S/840 PSD DA35 SI	Silver	581

