



Maxos LED Industry – innovatieve, flexibele oplossing levert ideale lichtopbrengst

Maxos LED Industry 4MX850

De Maxos LED Industry is een verlichtingsoplossing met een korte terugverdientijd die tegelijk voldoet aan alle relevante normen voor supermarkten en industriële toepassingen. Voor een beperkte investering biedt de Maxos LED Industry energiebesparingen tot 40%, terwijl hij tevens hoge lichtniveaus levert met de vereiste kleurtemperaturen en verblindingsfactoren. Het Maxos LED Industry-systeem omvat uitwisselbare LED-boards die gemonteerd zijn op een standaard Maxos- of TTX400 draagprofiel. De keuze uit lenzen met breed- of diepstralende bundels betekent flexibiliteit in de lichtverdeling. In vergelijking met een conventionele fluorescentie-installatie wordt deze zeer efficiënte LED-oplossing volledig terugverdiend in minder dan drie jaar (afhankelijk van het aantal branduren). En dat is niet het enige voordeel: het gebruik van ons opwaardeerbare LED-engineplatform maakt de Maxos LED Industry tot een werkelijk toekomstbestendige oplossing.

Voordelen

- Energiebesparing tot 40 %, zeer korte terugverdientijd
- Units eenvoudig te monteren op bestaand Maxos- en TTX400-lichtlijnen
- Comfortabel licht, lange levensduur
- Levensduur 50.000 uur
- Versie 4000 lumen, en versie 5500 lumen

Maxos LED Industry 4MX850

Kenmerken

- Retrofit LED-unit voor Maxos- en TTX400-trunking
- Tot 138 lm/W rendement
- LED-driverunits voor draagprofielen in T5- en TL-D-lengte (hoge lichtopbrengst); vervangings-LED-driverunits met dezelfde lichtopbrengst als de geïnstalleerde T5- en TL-D-oplossingen (lager vermogen)
- Keuze uit smalle, medium, dubbele asymmetrische en asymmetrische lenzen
- Bespaard tot 40% energie

Toepassing

- Industrie
- Magazijnen
- Supermarkten, doe-het-zelf-zaken, elektronikawinkels
- Showrooms

Specificaties

Type	4MX850
Lichtbron	LED-module
Vermogen	27 W (4000 lm, 4000 K) 39 W (5500 lm, 4000 K) 48 W (6600 lm, 4000 K) 60 W (8000 lm, 4000 K)
Bundelhoek	2x 50° (brede bundel) of 2x 30° (diepstralende bundel) A20°, DA20° of 2 x DA35°
Lichtopbrengst	Tot 6600 lm
Kleurtemperatuur	3000, 4000 of 5000 K
Kleurweergave (Ra)	>80
Mediaan nuttige levensduur L70B50	70.000 uur
Mediaan nuttige levensduur L80B50	50.000 uur
Mediaan nuttige levensduur L90B50	25.000 uur
Uitvalpercentage driver	1% per 5000 uur
Gemiddelde omgevingstemperatuur	+25 °C

Bedrijfstemperatuur	-20 °C tot +35°C
Driver	Xitanium, eenvoudig te vervangen
Voeding/gegevenstoevoer	75 W (max. vermogen), programmeerbaar
Netspanning	220-240 V / 50-60 Hz
Dimmen	Standaard dimbaar, DALI of vaste vermogen versies
Opties	Noodverlichting: centrale (EL) of met batterij (EL3)
Materiaal	VSA-unit: metaalplaat Lensplaat: PMMA
Kleur	Wit (WH) en zilvergrijs (SI)
Aansluiting	Elektrisch contact via standaard Maxos doorvoerbedradingsconnector
Behoud	Door de driver-unit uit de rail te klikken
Installatie	Bevestiging van de 4MX850-unit op het Maxos draagprofiel met verende klemmen Pendel- of opbouwmontage (plafond)
Opmerkingen:	Geen uitwisseling van kale LED-engines, alleen de complete 4MX850-unit (1,5 m lengte)

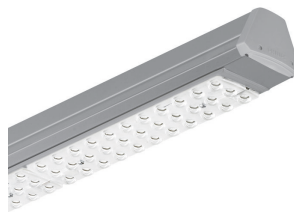
Versions

Maxos LED Industry 4MX850
electrical unit



Maxos LED Industry 4MX850

Versions



Productgegevens



Maxos LED Industry 4MX850

Toepassingsomstandigheden

Bereik omgevingstemperatuur	-20 tot +35 °C
Maximaal dimniveau	1%
Geschikt voor willekeurig schakelen	Niet van toepassing

Goedkeuring en Toepassing

Mech. impact protection code	IK02
Ingress protection code	IP 20

Regelsystemen en Dimmers

Dimbaar	Ja
---------	----

Algemene informatie

Bundelhoek lichtbron	120 °
CE-markering	CE-markering
Protection class IEC	Veiligheidsklasse I
Driver/VSA meegeleverd	Ja
ENEC-markering	ENEC-markering
Brandbaarheidsmarkering	Voor montage op gemakkelijk brandbare oppervlakken
Gloeidraadtest	Temperatuur 650 °C, duur 30 s
Lichtbron vervangbaar	Nee
Aantal VSA's	1 unit

Initiële prestaties (conform IEC)

Initiële Kleurweergave-index (CRI)	≥80
Tolerantie lichtstroom	+/-10%

Bedrijfs- en Elektrische gegevens

Order Code	Full Product Name	Ingangsspanning
87641199	4MX850 581 LED80S/840 PSD NB WH	220-240 V
87643599	4MX850 581 LED80S/840 PSD WB WH	220-240 V
88105799	4MX850 581 LED80S/840 PSD NB WH C-2R	220-240 V
88106499	4MX850 581 LED80S/840 PSD WB WH C-2R	220-240 V
88107199	4MX850 581 LED66S/840 PSD NB WH C-2R	220-240 V
88108899	4MX850 581 LED66S/840 PSD WB WH C-2R	220-240 V
88250499	4MX850 581 LED80S/840 PSD VWB WH	220-240 V
91356799	4MX866 581 LED66S/840 PSD WB WH	220-240 V
97494099	4MX866 581 LED55S/840 PSD WB WH C-2R	220-240 V
97849899	4MX850 581 LED55S/840 PSD NB WH C-2R	220-240 V
22178299	4MX850 581 LED55S/840 PSD WB WH C-2R	220-240 V
66121399	4MX850 581 LED55S/830 PSD NB WH	220-240 V
66122099	4MX850 581 LED55S/840 PSD NB WH	220-240 V
66123799	4MX850 581 LED55S/830 PSD WB WH	220-240 V
66124499	4MX850 581 LED55S/840 PSD WB WH	220-240 V
66169599	4MX850 581 LED40S/830 PSD NB WH	220-240 V
66170199	4MX850 581 LED40S/840 PSD NB WH	220-240 V
66179499	4MX850 581 LED40S/830 PSD WB WH	220-240 V
66171899	4MX850 581 LED40S/840 PSD WB WH	220-240 V
66263099	4MX850 581 LED55S/830 PSD DA20 WH	220-240 V
66264799	4MX850 581 LED55S/840 PSD DA20 WH	220-240 V
66271599	4MX850 581 LED40S/830 PSD DA20 WH	220-240 V
66272299	4MX850 581 LED40S/840 PSD DA20 WH	220-240 V
66695999	4MX850 581 LED66S/840 PSD WB WH	220-240 V
66696699	4MX850 581 LED66S/840 PSD NB WH	220-240 V
67385899	4MX866 581 LED66S/840 PSD WB WH C-2R	220-240 V
88185999	4MX850 491 LED80S/840 PSD-CLO WB WH	220-240 V
88163799	4MX866 491 LED66S/840 PSD WB WH C-2R	220-240 V
88251199	4MX850 491 LED80S/840 PSD VWB WH	220-240 V
88464599	4MX866 491 LED55S/840 PSD WB WH	220-240 V
91359899	4MX850 491 LED80S/840 PSD VWB WH C-2R	220 tot 240 V
91482399	4MX866 491 LED55S/840 PSD WB WH C-2R	220-240 V
91893799	4MX866 491 LED55S/840 PSD NB WH	220-240 V
97428599	4MX850 491 LED66S/840 PSD DA20 WH C-2R	220-240 V
97429299	4MX850 491 LED66S/840 PSD NB WH C-2R	220-240 V
97430899	4MX850 491 LED66S/840 PSD WB WH C-2R	220-240 V
97432299	4MX850 491 LED80S/840 PSD NB WH C-2R	220-240 V
97433999	4MX850 491 LED80S/840 PSD WB WH C-2R	220-240 V
97448399	4MX866 491 LED66S/840 PSD WB WH	220-240 V
97483499	4MX866 491 LED66S/840 PSD NB WH C-2R	220-240 V
07978999	4MX866 491 LED66S/840 PSD WB WH ELD1	220-240 V
66117699	4MX850 491 LED55S/830 PSD NB WH	220-240 V
66118399	4MX850 491 LED55S/840 PSD NB WH	220-240 V
66119099	4MX850 491 LED55S/830 PSD WB WH	220-240 V
66120699	4MX850 491 LED55S/840 PSD WB WH	220-240 V
66165799	4MX850 491 LED40S/830 PSD NB WH	220-240 V
66166499	4MX850 491 LED40S/840 PSD NB WH	220-240 V
66167199	4MX850 491 LED40S/830 PSD WB WH	220-240 V
66168899	4MX850 491 LED40S/840 PSD WB WH	220-240 V
66261699	4MX850 491 LED55S/830 PSD DA20 WH	220-240 V
66262399	4MX850 491 LED55S/840 PSD DA20 WH	220-240 V

Maxos LED Industry 4MX850

Order Code	Full Product Name	Ingangsspanning
66269299	4MX850 491 LED40S/830 PSD DA20 WH	220-240 V
66270899	4MX850 491 LED40S/840 PSD DA20 WH	220-240 V
66601099	4MX850 491 LED66S/840 PSD DA20 WH	220-240 V
66602799	4MX850 491 LED66S/840 PSD WB WH	220-240 V
66603499	4MX850 491 LED66S/840 PSD NB WH	220-240 V
66693599	4MX850 491 LED66S/830 PSD WB WH	220-240 V
66744499	4MX850 491 LED40S/840 PSD A20 WH	220-240 V
66745199	4MX850 491 LED55S/840 PSD A20 WH	220-240 V
66759899	4MX850 491 LED40S/830 PSD A20 WH	220-240 V
66770399	4MX850 491 LED66S/840 PSD A20 WH	220-240 V
67281399	4MX850 491 LED80S/840 PSD NB WH	220-240 V
67282099	4MX850 491 LED80S/840 PSD WB WH	220-240 V
67295099	4MX866 491 LED66S/840 PSD NB WH	220-240 V
66125199	4MX850 491 LED55S/830 PSD NB SI	220-240 V
66126899	4MX850 491 LED55S/840 PSD NB SI	220-240 V
66127599	4MX850 491 LED55S/830 PSD WB SI	220-240 V
66128299	4MX850 491 LED55S/840 PSD WB SI	220-240 V
66172599	4MX850 491 LED40S/830 PSD NB SI	220-240 V
66173299	4MX850 491 LED40S/840 PSD NB SI	220-240 V
66174999	4MX850 491 LED40S/830 PSD WB SI	220-240 V
66175699	4MX850 491 LED40S/840 PSD WB SI	220-240 V
66265499	4MX850 491 LED55S/830 PSD DA20 SI	220-240 V
66266199	4MX850 491 LED55S/840 PSD DA20 SI	220-240 V
66273999	4MX850 491 LED40S/830 PSD DA20 SI	220-240 V
66274699	4MX850 491 LED40S/840 PSD DA20 SI	220-240 V
66757499	4MX850 491 LED55S/830 PSD A20 SI	220-240 V
66760499	4MX850 491 LED40S/830 PSD A20 SI	220-240 V
66761199	4MX850 491 LED40S/840 PSD A20 SI	220-240 V
66771099	4MX850 491 LED66S/840 PSD A20 SI	220-240 V
66130599	4MX850 581 LED55S/840 PSD NB SI	220-240 V
66131299	4MX850 581 LED55S/830 PSD WB SI	220-240 V
66132999	4MX850 581 LED55S/840 PSD WB SI	220-240 V
66177099	4MX850 581 LED40S/840 PSD NB SI	220-240 V
66180099	4MX850 581 LED40S/830 PSD WB SI	220-240 V
66178799	4MX850 581 LED40S/840 PSD WB SI	220-240 V
66267899	4MX850 581 LED55S/830 PSD DA20 SI	220-240 V
66268599	4MX850 581 LED55S/840 PSD DA20 SI	220-240 V
66275399	4MX850 581 LED40S/830 PSD DA20 SI	220-240 V
66276099	4MX850 581 LED40S/840 PSD DA20 SI	220-240 V

Algemene informatie (1/2)

Order Code	Full Product Name	Lampvoet	Type lichtkap/lens	Noodverlichting	VSA	Order Code	Full Product Name	Lampvoet	Type lichtkap/lens	Noodverlichting	VSA
87641199	4MX850 581 LED80S/84 0 PSD NB WH	-	Polymethylmethacrylaat schaal/lichtkap	-	-	88105799	4MX850 581 LED80S/84 0 PSD NB WH C-2R	-	Polymethylmethacrylaat schaal/lichtkap	-	-
87643599	4MX850 581 LED80S/84 0 PSD WB WH	-	Polymethylmethacrylaat schaal/lichtkap	-	-	88106499	4MX850 581 LED80S/84 0 PSD WB WH C-2R	-	Polymethylmethacrylaat schaal/lichtkap	-	-

Maxos LED Industry 4MX850

Order Code	Full Product Name	Lampvoet	Type lichtkap/lens	Noodverlichting	VSA
88107199	4MX850 581 LED66S/84 0 PSD NB WH C-2R	-	Polymethylmethacrylaat schaal/lichtkap	-	-
88108899	4MX850 581 LED66S/84 0 PSD WB WH C-2R	-	Polymethylmethacrylaat schaal/lichtkap	-	-
88250499	4MX850 581 LED80S/84 0 PSD VWB WH	-	Polymethylmethacrylaat schaal/lichtkap	-	-
91356799	4MX866 581 LED66S/84 0 PSD WB WH	-	Polymethylmethacrylaat schaal/lichtkap	-	-
97494099	4MX866 581 LED55S/840 PSD WB WH C-2R	-	Polymethylmethacrylaat schaal/lichtkap	-	-
97849899	4MX850 581 LED55S/840 PSD NB WH C-2R	-	-	-	-
22178299	4MX850 581 LED55S/840 PSD WB WH C-2R	-	-	-	-
66121399	4MX850 581 LED55S/830 PSD NB WH	-	Polymethylmethacrylaat schaal/lichtkap	-	-
66122099	4MX850 581 LED55S/840 PSD NB WH	-	Polymethylmethacrylaat schaal/lichtkap	-	-
66123799	4MX850 581 LED55S/830 PSD WB WH	-	Polymethylmethacrylaat schaal/lichtkap	-	-
66124499	4MX850 581 LED55S/840 PSD WB WH	-	Polymethylmethacrylaat schaal/lichtkap	-	-
66169599	4MX850 581 LED40S/83 0 PSD NB WH	-	Polymethylmethacrylaat schaal/lichtkap	-	-
66170199	4MX850 581 LED40S/84 0 PSD NB WH	-	Polymethylmethacrylaat schaal/lichtkap	-	-
66179499	4MX850 581 LED40S/83	-	Polymethylmethacrylaat schaal/lichtkap	-	-

Order Code	Full Product Name	Lampvoet	Type lichtkap/lens	Noodverlichting	VSA
	0 PSD WB WH				
66171899	4MX850 581 LED40S/84 0 PSD WB WH	-	Polymethylmethacrylaat schaal/lichtkap	-	-
66263099	4MX850 581 LED55S/830 PSD DA20 WH	-	Polymethylmethacrylaat schaal/lichtkap	-	-
66264799	4MX850 581 LED55S/840 PSD DA20 WH	-	Polymethylmethacrylaat schaal/lichtkap	-	-
66271599	4MX850 581 LED40S/83 0 PSD DA20 WH	-	Polymethylmethacrylaat schaal/lichtkap	-	-
66272299	4MX850 581 LED40S/84 0 PSD DA20 WH	-	Polymethylmethacrylaat schaal/lichtkap	-	-
66695999	4MX850 581 LED66S/84 0 PSD WB WH	-	Polymethylmethacrylaat schaal/lichtkap	-	-
66696699	4MX850 581 LED66S/84 0 PSD NB WH	-	Polymethylmethacrylaat schaal/lichtkap	-	-
67385899	4MX866 581 LED66S/84 0 PSD WB WH C-2R	-	Polymethylmethacrylaat schaal/lichtkap	-	-
88185999	4MX850 491 LED80S/84 0 PSD-CLO WB WH	-	Polymethylmethacrylaat schaal/lichtkap	-	-
88163799	4MX866 491 LED66S/84 0 PSD WB WH C-2R	-	Polymethylmethacrylaat schaal/lichtkap	-	-
88251199	4MX850 491 LED80S/84 0 PSD VWB WH	-	Polymethylmethacrylaat schaal/lichtkap	-	-
88464599	4MX866 491 LED55S/840 PSD WB WH	-	Polymethylmethacrylaat schaal/lichtkap	-	-
91359899	4MX850 491 LED80S/84	-	-	-	-

Maxos LED Industry 4MX850

Order Code	Full Product Name	Lampvoet	Type lichtkap/lens	Noodverlichting	VSA
	0 PSD VWB WH C-2R				
91482399	4MX866 491 LED55S/840 PSD WB WH C-2R	-	Polymethylmethacrylaat schaal/lichtkap	-	-
91893799	4MX866 491 LED55S/840 PSD NB WH	-	Polymethylmethacrylaat schaal/lichtkap	-	-
97428599	4MX850 491 LED66S/84 0 PSD DA20 WH C-2R	-	Polymethylmethacrylaat schaal/lichtkap	-	-
97429299	4MX850 491 LED66S/84 0 PSD NB WH C-2R	-	Polymethylmethacrylaat schaal/lichtkap	-	-
97430899	4MX850 491 LED66S/84 0 PSD WB WH C-2R	-	Polymethylmethacrylaat schaal/lichtkap	-	-
97432299	4MX850 491 LED80S/84 0 PSD NB WH C-2R	-	Polymethylmethacrylaat schaal/lichtkap	-	-
97433999	4MX850 491 LED80S/84 0 PSD WB WH C-2R	-	Polymethylmethacrylaat schaal/lichtkap	-	-
97448399	4MX866 491 LED66S/84 0 PSD WB WH	-	Polymethylmethacrylaat schaal/lichtkap	-	-
97483499	4MX866 491 LED66S/84 0 PSD NB WH C-2R	-	Polymethylmethacrylaat schaal/lichtkap	-	-
07978999	4MX866 491 LED66S/84 0 PSD WB WH ELD1	-	-	-	-
66117699	4MX850 491 LED55S/830 PSD NB WH	-	Polymethylmethacrylaat schaal/lichtkap	-	-
66118399	4MX850 491 LED55S/840 PSD NB WH	-	Polymethylmethacrylaat schaal/lichtkap	-	-
66119099	4MX850 491 LED55S/830 PSD WB WH	-	Polymethylmethacrylaat schaal/lichtkap	-	-

Order Code	Full Product Name	Lampvoet	Type lichtkap/lens	Noodverlichting	VSA
66120699	4MX850 491 LED55S/840 PSD WB WH	-	Polymethylmethacrylaat schaal/lichtkap	-	-
66165799	4MX850 491 LED40S/83 0 PSD NB WH	-	Polymethylmethacrylaat schaal/lichtkap	-	-
66166499	4MX850 491 LED40S/84 0 PSD NB WH	-	Polymethylmethacrylaat schaal/lichtkap	-	-
66167199	4MX850 491 LED40S/83 0 PSD WB WH	-	Polymethylmethacrylaat schaal/lichtkap	-	-
66168899	4MX850 491 LED40S/84 0 PSD WB WH	-	Polymethylmethacrylaat schaal/lichtkap	-	-
66261699	4MX850 491 LED55S/830 PSD DA20 WH	-	Polymethylmethacrylaat schaal/lichtkap	-	-
66262399	4MX850 491 LED55S/840 PSD DA20 WH	-	Polymethylmethacrylaat schaal/lichtkap	-	-
66269299	4MX850 491 LED40S/83 0 PSD DA20 WH	-	Polymethylmethacrylaat schaal/lichtkap	-	-
66270899	4MX850 491 LED40S/84 0 PSD DA20 WH	-	Polymethylmethacrylaat schaal/lichtkap	-	-
66601099	4MX850 491 LED66S/84 0 PSD DA20 WH	-	Polymethylmethacrylaat schaal/lichtkap	-	-
66602799	4MX850 491 LED66S/84 0 PSD WB WH	-	Polymethylmethacrylaat schaal/lichtkap	-	-
66603499	4MX850 491 LED66S/84 0 PSD NB WH	-	Polymethylmethacrylaat schaal/lichtkap	-	-
66693599	4MX850 491 LED66S/83 0 PSD WB WH	-	Polymethylmethacrylaat schaal/lichtkap	-	-

Maxos LED Industry 4MX850

Order Code	Full Product Name	Lampvoet	Type lichtkap/lens	Noodverlichting	VSA
66744499	4MX850 491 - LED40S/84 0 PSD A20 WH	-	Polymethylmethacrylaat schaal/lichtkap	-	-
66745199	4MX850 491 - LED55S/840 PSD A20 WH	-	Polymethylmethacrylaat schaal/lichtkap	-	-
66759899	4MX850 491 - LED40S/83 0 PSD A20 WH	-	Polymethylmethacrylaat schaal/lichtkap	-	-
66770399	4MX850 491 - LED66S/84 0 PSD A20 WH	-	Polymethylmethacrylaat schaal/lichtkap	-	-
67281399	4MX850 491 - LED80S/84 0 PSD NB WH	-	Polymethylmethacrylaat schaal/lichtkap	-	-
67282099	4MX850 491 - LED80S/84 0 PSD WB WH	-	Polymethylmethacrylaat schaal/lichtkap	-	-
67295099	4MX866 491 - LED66S/84 0 PSD NB WH	-	Polymethylmethacrylaat schaal/lichtkap	EL1	-
66125199	4MX850 491 - LED55S/830 PSD NB SI	-	Polymethylmethacrylaat schaal/lichtkap	-	-
66126899	4MX850 491 - LED55S/840 PSD NB SI	-	Polymethylmethacrylaat schaal/lichtkap	-	-
66127599	4MX850 491 - LED55S/830 PSD WB SI	-	Polymethylmethacrylaat schaal/lichtkap	-	-
66128299	4MX850 491 - LED55S/840 PSD WB SI	-	Polymethylmethacrylaat schaal/lichtkap	-	-
66172599	4MX850 491 - LED40S/83 0 PSD NB SI	-	Polymethylmethacrylaat schaal/lichtkap	-	-
66173299	4MX850 491 - LED40S/84 0 PSD NB SI	-	Polymethylmethacrylaat schaal/lichtkap	-	-
66174999	4MX850 491 - LED40S/83 0 PSD WB SI	-	Polymethylmethacrylaat schaal/lichtkap	-	-

Order Code	Full Product Name	Lampvoet	Type lichtkap/lens	Noodverlichting	VSA
66175699	4MX850 491 - LED40S/84 0 PSD WB SI	-	Polymethylmethacrylaat schaal/lichtkap	-	-
66265499	4MX850 491 - LED55S/830 PSD DA20 SI	-	Polymethylmethacrylaat schaal/lichtkap	-	-
66266199	4MX850 491 - LED55S/840 PSD DA20 SI	-	Polymethylmethacrylaat schaal/lichtkap	-	-
66273999	4MX850 491 - LED40S/83 0 PSD DA20 SI	-	Polymethylmethacrylaat schaal/lichtkap	-	-
66274699	4MX850 491 - LED40S/84 0 PSD DA20 SI	-	Polymethylmethacrylaat schaal/lichtkap	-	-
66757499	4MX850 491 - LED55S/830 PSD A20 SI	-	Polymethylmethacrylaat schaal/lichtkap	-	-
66760499	4MX850 491 - LED40S/83 0 PSD A20 SI	-	Polymethylmethacrylaat schaal/lichtkap	-	-
66761199	4MX850 491 - LED40S/84 0 PSD A20 SI	-	Polymethylmethacrylaat schaal/lichtkap	-	-
66771099	4MX850 491 - LED66S/84 0 PSD A20 SI	-	Polymethylmethacrylaat schaal/lichtkap	-	-
66130599	4MX850 581 - LED55S/840 PSD NB SI	-	Polymethylmethacrylaat schaal/lichtkap	-	-
66131299	4MX850 581 - LED55S/830 PSD WB SI	-	Polymethylmethacrylaat schaal/lichtkap	-	-
66132999	4MX850 581 - LED55S/840 PSD WB SI	-	Polymethylmethacrylaat schaal/lichtkap	-	-
66177099	4MX850 581 - LED40S/84 0 PSD NB SI	-	Polymethylmethacrylaat schaal/lichtkap	-	-
66180099	4MX850 581 - LED40S/83 0 PSD WB SI	-	Polymethylmethacrylaat schaal/lichtkap	-	-
66178799	4MX850 581 - LED40S/84 0 PSD WB SI	-	Polymethylmethacrylaat schaal/lichtkap	-	-

Maxos LED Industry 4MX850

Order Code	Full Product Name	Lampvoet	Type lichtkap/lens	Noodverlichting	VSA
66267899	4MX850 581 LED55S/830 PSD DA20 SI	-	Polymethylmethacrylaat schaal/lichtkap	-	-
66268599	4MX850 581 LED55S/840 PSD DA20 SI	-	Polymethylmethacrylaat schaal/lichtkap	-	-
66275399	4MX850 581 LED40S/830 PSD DA20 SI	-	Polymethylmethacrylaat schaal/lichtkap	-	-

Order Code	Full Product Name	Lampvoet	Type lichtkap/lens	Noodverlichting	VSA
66276099	4MX850 581 LED40S/840 PSD DA20 SI	-	Polymethylmethacrylaat schaal/lichtkap	-	-

Algemene informatie (2/2)

Order Code	Full Product Name	Lamp family code	Ingebouwde regeling	Number of light sources	Optiektype	Product Family Code	UL-markering
87641199	4MX850 581 LED80S/840 PSD NB WH	LED80S	-	1	Smalle bundel	4MX850	Nee
87643599	4MX850 581 LED80S/840 PSD WB WH	LED80S	-	1	Brede bundel	4MX850	Nee
88105799	4MX850 581 LED80S/840 PSD NB WH C-2R	LED80S	-	1	Smalle bundel	4MX850	Nee
88106499	4MX850 581 LED80S/840 PSD WB WH C-2R	LED80S	-	1	Brede bundel	4MX850	Nee
88107199	4MX850 581 LED66S/840 PSD NB WH C-2R	LED66S	-	1	Smalle bundel	4MX850	Nee
88108899	4MX850 581 LED66S/840 PSD WB WH C-2R	LED66S	-	1	Brede bundel	4MX850	Nee
88250499	4MX850 581 LED80S/840 PSD VWB WH	LED80S	-	1	Zeer brede bundel	4MX850	Nee
91356799	4MX866 581 LED66S/840 PSD WB WH	LED66S	-	1	Brede bundel	4MX866	Nee
97494099	4MX866 581 LED55S/840 PSD WB WH C-2R	LED55S	-	1	Brede bundel	4MX866	Nee
97849899	4MX850 581 LED55S/840 PSD NB WH C-2R	-	-	-	Smalle bundel	4MX850	-
22178299	4MX850 581 LED55S/840 PSD WB WH C-2R	-	-	-	Brede bundel	4MX850	-
66121399	4MX850 581 LED55S/830 PSD NB WH	LED55S	-	1	Smalle bundel	4MX850	Nee
66122099	4MX850 581 LED55S/840 PSD NB WH	LED55S	-	1	Smalle bundel	4MX850	Nee
66123799	4MX850 581 LED55S/830 PSD WB WH	LED55S	-	1	Brede bundel	4MX850	Nee
66124499	4MX850 581 LED55S/840 PSD WB WH	LED55S	-	1	Brede bundel	4MX850	Nee
66169599	4MX850 581 LED40S/830 PSD NB WH	LED40S	-	1	Smalle bundel	4MX850	Nee
66170199	4MX850 581 LED40S/840 PSD NB WH	LED40S	-	1	Smalle bundel	4MX850	Nee
66179499	4MX850 581 LED40S/830 PSD WB WH	LED40S	-	1	Brede bundel	4MX850	Nee
66171899	4MX850 581 LED40S/840 PSD WB WH	LED40S	-	1	Brede bundel	4MX850	Nee
66263099	4MX850 581 LED55S/830 PSD DA20 WH	LED55S	-	1	Dubbelasymmetrische optiek 20°	4MX850	Nee
66264799	4MX850 581 LED55S/840 PSD DA20 WH	LED55S	-	1	Dubbelasymmetrische optiek 20°	4MX850	Nee
66271599	4MX850 581 LED40S/830 PSD DA20 WH	LED40S	-	1	Dubbelasymmetrische optiek 20°	4MX850	Nee
66272299	4MX850 581 LED40S/840 PSD DA20 WH	LED40S	-	1	Dubbelasymmetrische optiek 20°	4MX850	Nee
66695999	4MX850 581 LED66S/840 PSD WB WH	LED66S	-	1	Brede bundel	4MX850	Nee
66696699	4MX850 581 LED66S/840 PSD NB WH	LED66S	-	1	Smalle bundel	4MX850	Nee
67385899	4MX866 581 LED66S/840 PSD WB WH C-2R	LED66S	-	1	Brede bundel	4MX866	Nee
88185999	4MX850 491 LED80S/840 PSD-CLO WB WH	LED80S	Constante lichtopbrengst	1	Brede bundel	4MX850	Nee
88163799	4MX866 491 LED66S/840 PSD WB WH C-2R	LED66S	-	1	Brede bundel	4MX866	Nee
88251199	4MX850 491 LED80S/840 PSD VWB WH	LED80S	-	1	Zeer brede bundel	4MX850	Nee
88464599	4MX866 491 LED55S/840 PSD WB WH	LED55S	-	1	Brede bundel	4MX866	Nee
91359899	4MX850 491 LED80S/840 PSD VWB WH C-2R	-	-	-	Zeer brede bundel	4MX850	-
91482399	4MX866 491 LED55S/840 PSD WB WH C-2R	LED55S	-	1	Brede bundel	4MX866	Nee
91893799	4MX866 491 LED55S/840 PSD NB WH	LED55S	-	1	Smalle bundel	4MX866	Nee
97428599	4MX850 491 LED66S/840 PSD DA20 WH C-2R	LED66S	-	1	Dubbelasymmetrische optiek 20°	4MX850	Nee
97429299	4MX850 491 LED66S/840 PSD NB WH C-2R	LED66S	-	1	Smalle bundel	4MX850	Nee

Maxos LED Industry 4MX850

Order Code	Full Product Name	Lamp family code	Ingebouwde regeling	Number of light sources	Optiektype	Product Family Code	UL-markering
97430899	4MX850 491 LED66S/840 PSD WB WH C-2R	LED66S	-	1	Brede bundel	4MX850	Nee
97432299	4MX850 491 LED80S/840 PSD NB WH C-2R	LED80S	-	1	Smalle bundel	4MX850	Nee
97433999	4MX850 491 LED80S/840 PSD WB WH C-2R	LED80S	-	1	Brede bundel	4MX850	Nee
97448399	4MX866 491 LED66S/840 PSD WB WH	LED66S	-	1	Brede bundel	4MX866	Nee
97483499	4MX866 491 LED66S/840 PSD NB WH C-2R	LED66S	-	1	Smalle bundel	4MX866	Nee
07978999	4MX866 491 LED66S/840 PSD WB WH ELD1	-	-	-	Brede bundel	4MX866	-
66117699	4MX850 491 LED55S/830 PSD NB WH	LED55S	-	1	Smalle bundel	4MX850	Nee
66118399	4MX850 491 LED55S/840 PSD NB WH	LED55S	-	1	Smalle bundel	4MX850	Nee
66119099	4MX850 491 LED55S/830 PSD WB WH	LED55S	-	1	Brede bundel	4MX850	Nee
66120699	4MX850 491 LED55S/840 PSD WB WH	LED55S	-	1	Brede bundel	4MX850	Nee
66165799	4MX850 491 LED40S/830 PSD NB WH	LED40S	-	1	Smalle bundel	4MX850	Nee
66166499	4MX850 491 LED40S/840 PSD NB WH	LED40S	-	1	Smalle bundel	4MX850	Nee
66167199	4MX850 491 LED40S/830 PSD WB WH	LED40S	-	1	Brede bundel	4MX850	Nee
66168899	4MX850 491 LED40S/840 PSD WB WH	LED40S	-	1	Brede bundel	4MX850	Nee
66261699	4MX850 491 LED55S/830 PSD DA20 WH	LED55S	-	1	Dubbelasymmetrische optiek 20°	4MX850	Nee
66262399	4MX850 491 LED55S/840 PSD DA20 WH	LED55S	-	1	Dubbelasymmetrische optiek 20°	4MX850	Nee
66269299	4MX850 491 LED40S/830 PSD DA20 WH	LED40S	-	1	Dubbelasymmetrische optiek 20°	4MX850	Nee
66270899	4MX850 491 LED40S/840 PSD DA20 WH	LED40S	-	1	Dubbelasymmetrische optiek 20°	4MX850	Nee
66601099	4MX850 491 LED66S/840 PSD DA20 WH	LED66S	-	1	Dubbelasymmetrische optiek 20°	4MX850	Nee
66602799	4MX850 491 LED66S/840 PSD WB WH	LED66S	-	1	Brede bundel	4MX850	Nee
66603499	4MX850 491 LED66S/840 PSD NB WH	LED66S	-	1	Smalle bundel	4MX850	Nee
66693599	4MX850 491 LED66S/830 PSD WB WH	LED66S	-	1	Brede bundel	4MX850	Nee
66744499	4MX850 491 LED40S/840 PSD A20 WH	LED40S	-	1	Spiegel met asymmetrische ashoek 20°	4MX850	Nee
66745199	4MX850 491 LED55S/840 PSD A20 WH	LED55S	-	1	Spiegel met asymmetrische ashoek 20°	4MX850	Nee
66759899	4MX850 491 LED40S/830 PSD A20 WH	LED40S	-	1	Spiegel met asymmetrische ashoek 20°	4MX850	Nee
66770399	4MX850 491 LED66S/840 PSD A20 WH	LED66S	-	1	Spiegel met asymmetrische ashoek 20°	4MX850	Nee
67281399	4MX850 491 LED80S/840 PSD NB WH	LED80S	-	1	Smalle bundel	4MX850	Nee
67282099	4MX850 491 LED80S/840 PSD WB WH	LED80S	-	1	Brede bundel	4MX850	Nee
67295099	4MX866 491 LED66S/840 PSD NB WH	LED66S	-	1	Smalle bundel	4MX866	Nee
66125199	4MX850 491 LED55S/830 PSD NB SI	LED55S	-	1	Smalle bundel	4MX850	Nee
66126899	4MX850 491 LED55S/840 PSD NB SI	LED55S	-	1	Smalle bundel	4MX850	Nee
66127599	4MX850 491 LED55S/830 PSD WB SI	LED55S	-	1	Brede bundel	4MX850	Nee
66128299	4MX850 491 LED55S/840 PSD WB SI	LED55S	-	1	Brede bundel	4MX850	Nee
66172599	4MX850 491 LED40S/830 PSD NB SI	LED40S	-	1	Smalle bundel	4MX850	Nee
66173299	4MX850 491 LED40S/840 PSD NB SI	LED40S	-	1	Smalle bundel	4MX850	Nee
66174999	4MX850 491 LED40S/830 PSD WB SI	LED40S	-	1	Brede bundel	4MX850	Nee
66175699	4MX850 491 LED40S/840 PSD WB SI	LED40S	-	1	Brede bundel	4MX850	Nee
66265499	4MX850 491 LED55S/830 PSD DA20 SI	LED55S	-	1	Dubbelasymmetrische optiek 20°	4MX850	Nee
66266199	4MX850 491 LED55S/840 PSD DA20 SI	LED55S	-	1	Dubbelasymmetrische optiek 20°	4MX850	Nee
66273999	4MX850 491 LED40S/830 PSD DA20 SI	LED40S	-	1	Dubbelasymmetrische optiek 20°	4MX850	Nee
66274699	4MX850 491 LED40S/840 PSD DA20 SI	LED40S	-	1	Dubbelasymmetrische optiek 20°	4MX850	Nee
66757499	4MX850 491 LED55S/830 PSD A20 SI	LED55S	-	1	Spiegel met asymmetrische ashoek 20°	4MX850	Nee
66760499	4MX850 491 LED40S/830 PSD A20 SI	LED40S	-	1	Spiegel met asymmetrische ashoek 20°	4MX850	Nee
66761199	4MX850 491 LED40S/840 PSD A20 SI	LED40S	-	1	Spiegel met asymmetrische ashoek 20°	4MX850	Nee

Maxos LED Industry 4MX850

Order Code	Full Product Name	Lamp family code	Ingebouwde regeling	Number of light sources	Optiektype	Product Family Code	UL-markering
66771099	4MX850 491 LED66S/840 PSD A20 SI	LED66S	-	1	Spiegel met asymmetrische ashoek 20°	4MX850	Nee
66130599	4MX850 581 LED55S/840 PSD NB SI	LED55S	-	1	Smalle bundel	4MX850	Nee
66131299	4MX850 581 LED55S/830 PSD WB SI	LED55S	-	1	Brede bundel	4MX850	Nee
66132999	4MX850 581 LED55S/840 PSD WB SI	LED55S	-	1	Brede bundel	4MX850	Nee
66177099	4MX850 581 LED40S/840 PSD NB SI	LED40S	-	1	Smalle bundel	4MX850	Nee
66180099	4MX850 581 LED40S/830 PSD WB SI	LED40S	-	1	Brede bundel	4MX850	Nee
66178799	4MX850 581 LED40S/840 PSD WB SI	LED40S	-	1	Brede bundel	4MX850	Nee
66267899	4MX850 581 LED55S/830 PSD DA20 SI	LED55S	-	1	Dubbelasymmetrische optiek 20°	4MX850	Nee
66268599	4MX850 581 LED55S/840 PSD DA20 SI	LED55S	-	1	Dubbelasymmetrische optiek 20°	4MX850	Nee
66275399	4MX850 581 LED40S/830 PSD DA20 SI	LED40S	-	1	Dubbelasymmetrische optiek 20°	4MX850	Nee
66276099	4MX850 581 LED40S/840 PSD DA20 SI	LED40S	-	1	Dubbelasymmetrische optiek 20°	4MX850	Nee

Initiële prestaties (conform IEC) (1/2)

Order Code	Full Product Name	Initiële kleurkwaliteit	Initiële gecorreleerde kleurtemperatuur	Initieel rendement LED-armatuur	Initiële lichtstroom
87641199	4MX850 581 LED80S/8 40 PSD NB WH	(0.38, 0.38) SDCM <3.5	4000 K	151 lm/W	8000 lm
87643599	4MX850 581 LED80S/8 40 PSD WB WH	(0.38, 0.38) SDCM <3.5	4000 K	151 lm/W	8000 lm
88105799	4MX850 581 LED80S/8 40 PSD NB WH C-2R	(0.38, 0.38) SDCM <3.5	4000 K	151 lm/W	8000 lm
88106499	4MX850 581 LED80S/8 40 PSD WB WH C-2R	(0.38, 0.38) SDCM <3.5	4000 K	151 lm/W	8000 lm
88107199	4MX850 581 LED66S/84 0 PSD NB WH C-2R	(0.38, 0.38) SDCM <3.5	4000 K	161 lm/W	6600 lm
88108899	4MX850 581 LED66S/84 0 PSD WB WH C-2R	(0.38, 0.38) SDCM <3.5	4000 K	161 lm/W	6600 lm
88250499	4MX850 581 LED55S/840 PSD NB WH	(0.38, 0.38) SDCM <3.5	4000 K	151 lm/W	8000 lm

Order Code	Full Product Name	Initiële kleurkwaliteit	Initiële gecorreleerde kleurtemperatuur	Initieel rendement LED-armatuur	Initiële lichtstroom
91356799	4MX866 581 LED80S/8 40 PSD VWB WH	(0.38, 0.38) SDCM <3.5	4000 K	147 lm/W	6600 lm
97494099	4MX866 581 LED66S/84 0 PSD WB WH	(0.38, 0.38) SDCM <3.5	4000 K	149 lm/W	5500 lm
97849899	4MX850 581 LED55S/84 0 PSD WB WH C-2R	(0.38, 0.38) SDCM <3.5	4000 K	167 lm/W	5500 lm
22178299	4MX850 581 LED55S/84 0 PSD WB WH C-2R	(0.38, 0.38) SDCM <3.5	4000 K	167 lm/W	5500 lm
66121399	4MX850 581 LED55S/83 0 PSD NB WH	(0.43, 0.40) SDCM <3.5	3000 K	157 lm/W	5500 lm
66122099	4MX850 581 LED55S/840 PSD WB WH	(0.38, 0.38) SDCM <3.5	4000 K	167 lm/W	5500 lm

Maxos LED Industry 4MX850

Order Code	Full Product Name	Initiële kleurkwaliteit	Initiële gecorreleerde kleurtemperatuur	Initieel rendement	
				LED-armatuur	Initiële lichtstroom
	0 PSD NB WH				
66123799	4MX850 581 LED55S/83 0 PSD WB WH	(0.43, 0.40) SDCM <3.5	3000 K	157 lm/W	5500 lm
66124499	4MX850 581 LED55S/84 0 PSD WB WH	(0.38, 0.38) SDCM <3.5	4000 K	167 lm/W	5500 lm
66169599	4MX850 581 LED40S/83 0 PSD NB WH	(0.43, 0.40) SDCM <3.5	3000 K	148 lm/W	4000 lm
66170199	4MX850 581 LED40S/8 40 PSD NB WH	(0.38, 0.38) SDCM <3.5	4000 K	160 lm/W	4000 lm
66179499	4MX850 581 LED40S/83 0 PSD WB WH	(0.43, 0.40) SDCM <3.5	3000 K	148 lm/W	4000 lm
66171899	4MX850 581 LED40S/8 40 PSD WB WH	(0.38, 0.38) SDCM <3.5	4000 K	160 lm/W	4000 lm
66263099	4MX850 581 LED55S/83 0 PSD DA20 WH	(0.43, 0.40) SDCM <3.5	3000 K	157 lm/W	5500 lm
66264799	4MX850 581 LED55S/84 0 PSD DA20 WH	(0.38, 0.38) SDCM <3.5	4000 K	167 lm/W	5500 lm
66271599	4MX850 581 LED40S/83 0 PSD DA20 WH	(0.43, 0.40) SDCM <3.5	3000 K	148 lm/W	4000 lm
66272299	4MX850 581	(0.38, 0.38) SDCM <3.5	4000 K	160 lm/W	4000 lm

Order Code	Full Product Name	Initiële kleurkwaliteit	Initiële gecorreleerde kleurtemperatuur	Initieel rendement	
				LED-armatuur	Initiële lichtstroom
	LED40S/8 40 PSD DA20 WH				
66695999	4MX850 581 LED66S/84 0 PSD WB WH	(0.38, 0.38) SDCM <3.5	4000 K	161 lm/W	6600 lm
66696699	4MX850 581 LED66S/84 0 PSD NB WH	(0.38, 0.38) SDCM <3.5	4000 K	161 lm/W	6600 lm
67385899	4MX866 581 LED66S/84 0 PSD WB WH C-2R	(0.38, 0.38) SDCM <3.5	4000 K	147 lm/W	6600 lm
88185999	4MX850 491 LED80S/8 40 PSD- CLO WB WH	(0.38, 0.38) SDCM <3.5	4000 K	151 lm/W	8000 lm
88163799	4MX866 491 LED66S/84 0 PSD WB WH C-2R	(0.38, 0.38) SDCM <3.5	4000 K	147 lm/W	6600 lm
88251199	4MX850 491 LED80S/8 40 PSD VWB WH	(0.38, 0.38) SDCM <3.5	4000 K	151 lm/W	8000 lm
88464599	4MX866 491 LED55S/84 0 PSD WB WH	(0.38, 0.38) SDCM <3.5	4000 K	149 lm/W	5500 lm
91359899	4MX850 491 LED80S/8 40 PSD VWB WH C-2R	(0.38, 0.38) SDCM <3.5	4000 K	151 lm/W	8000 lm
91482399	4MX866 491 LED55S/84	(0.38, 0.38) SDCM <3.5	4000 K	149 lm/W	5500 lm

Maxos LED Industry 4MX850

Order Code	Full Product Name	Initiële kleurkwaliteit	Initiële gecorreleerde kleurtemperatuur	Initieel rendement	
				LED-armatuur	Initiële lichtstroom
	0 PSD WB WH C-2R				
91893799	4MX866 491 LED55S/84 0 PSD NB WH	(0.38, 0.38) SDCM <3.5	4000 K	149 lm/W	5500 lm
97428599	4MX850 491 LED66S/84 0 PSD DA20 WH C-2R	(0.38, 0.38) SDCM <3.5	4000 K	161 lm/W	6600 lm
97429299	4MX850 491 LED66S/84 0 PSD NB WH C-2R	(0.38, 0.38) SDCM <3.5	4000 K	161 lm/W	6600 lm
97430899	4MX850 491 LED66S/84 0 PSD WB WH C-2R	(0.38, 0.38) SDCM <3.5	4000 K	161 lm/W	6600 lm
97432299	4MX850 491 LED80S/8 40 PSD NB WH C-2R	(0.38, 0.38) SDCM <3.5	4000 K	151 lm/W	8000 lm
97433999	4MX850 491 LED80S/8 40 PSD WB WH C-2R	(0.38, 0.38) SDCM <3.5	4000 K	151 lm/W	8000 lm
97448399	4MX866 491 LED66S/84 0 PSD WB WH	(0.38, 0.38) SDCM <3.5	4000 K	147 lm/W	6600 lm
97483499	4MX866 491 LED66S/84 0 PSD NB WH C-2R	(0.38, 0.38) SDCM <3.5	4000 K	147 lm/W	6600 lm
07978999	4MX866 491 LED66S/84 0 PSD WB WH ELD1	(0.38, 0.38) SDCM <3.5	4000 K	147 lm/W	6600 lm

Order Code	Full Product Name	Initiële kleurkwaliteit	Initiële gecorreleerde kleurtemperatuur	Initieel rendement	
				LED-armatuur	Initiële lichtstroom
66117699	4MX850 491 LED55S/83 0 PSD NB WH	(0.43, 0.40) SDCM <3.5	3000 K	157 lm/W	5500 lm
66118399	4MX850 491 LED55S/84 0 PSD NB WH	(0.38, 0.38) SDCM <3.5	4000 K	167 lm/W	5500 lm
66119099	4MX850 491 LED55S/83 0 PSD WB WH	(0.43, 0.40) SDCM <3.5	3000 K	157 lm/W	5500 lm
66120699	4MX850 491 LED55S/84 0 PSD WB WH	(0.38, 0.38) SDCM <3.5	4000 K	167 lm/W	5500 lm
66165799	4MX850 491 LED40S/83 0 PSD NB WH	(0.43, 0.40) SDCM <3.5	3000 K	148 lm/W	4000 lm
66166499	4MX850 491 LED40S/8 40 PSD NB WH	(0.38, 0.38) SDCM <3.5	4000 K	160 lm/W	4000 lm
66167199	4MX850 491 LED40S/83 0 PSD WB WH	(0.43, 0.40) SDCM <3.5	3000 K	148 lm/W	4000 lm
66168899	4MX850 491 LED40S/8 40 PSD WB WH	(0.38, 0.38) SDCM <3.5	4000 K	160 lm/W	4000 lm
66261699	4MX850 491 LED55S/83 0 PSD DA20 WH	(0.43, 0.40) SDCM <3.5	3000 K	157 lm/W	5500 lm
66262399	4MX850 491 LED55S/84	(0.38, 0.38) SDCM <3.5	4000 K	167 lm/W	5500 lm

Maxos LED Industry 4MX850

Order Code	Full Product Name	Initiële kleurkwaliteit	Initiële gecorreleerde kleurtemperatuur	Initieel rendement	
				LED-armatuur	Initiële lichtstroom
	0 PSD DA20 WH				
66269299	4MX850 491 LED40S/83 0 PSD DA20 WH	(0.43, 0.40) SDCM <3.5	3000 K	148 lm/W	4000 lm
66270899	4MX850 491 LED40S/8 40 PSD DA20 WH	(0.38, 0.38) SDCM <3.5	4000 K	160 lm/W	4000 lm
66601099	4MX850 491 LED66S/84 0 PSD DA20 WH	(0.38, 0.38) SDCM <3.5	4000 K	161 lm/W	6600 lm
66602799	4MX850 491 LED66S/84 0 PSD WB WH	(0.38, 0.38) SDCM <3.5	4000 K	161 lm/W	6600 lm
66603499	4MX850 491 LED66S/84 0 PSD NB WH	(0.38, 0.38) SDCM <3.5	4000 K	161 lm/W	6600 lm
66693599	4MX850 491 LED66S/83 0 PSD WB WH	(0.43, 0.40) SDCM <3.5	3000 K	161 lm/W	6600 lm
66744499	4MX850 491 LED40S/8 40 PSD A20 WH	(0.38, 0.38) SDCM <3.5	4000 K	160 lm/W	4000 lm
66745199	4MX850 491 LED55S/84 0 PSD A20 WH	(0.38, 0.38) SDCM <3.5	4000 K	167 lm/W	5500 lm
66759899	4MX850 491 LED40S/83 0 PSD A20 WH	(0.43, 0.40) SDCM <3.5	3000 K	148 lm/W	4000 lm
66770399	4MX850 491	(0.38, 0.38) SDCM <3.5	4000 K	161 lm/W	6600 lm

Order Code	Full Product Name	Initiële kleurkwaliteit	Initiële gecorreleerde kleurtemperatuur	Initieel rendement	
				LED-armatuur	Initiële lichtstroom
	LED66S/84 0 PSD A20 WH				
67281399	4MX850 491 LED80S/8 40 PSD NB WH	(0.38, 0.38) SDCM <3.5	4000 K	151 lm/W	8000 lm
67282099	4MX850 491 LED80S/8 40 PSD WB WH	(0.38, 0.38) SDCM <3.5	4000 K	151 lm/W	8000 lm
67295099	4MX866 491 LED66S/84 0 PSD NB WH	(0.38, 0.38) SDCM <3.5	4000 K	147 lm/W	6600 lm
66125199	4MX850 491 LED55S/83 0 PSD NB SI	(0.43, 0.40) SDCM <3.5	3000 K	157 lm/W	5500 lm
66126899	4MX850 491 LED55S/84 0 PSD NB SI	(0.38, 0.38) SDCM <3.5	4000 K	167 lm/W	5500 lm
66127599	4MX850 491 LED55S/83 0 PSD WB SI	(0.43, 0.40) SDCM <3.5	3000 K	157 lm/W	5500 lm
66128299	4MX850 491 LED55S/84 0 PSD WB SI	(0.38, 0.38) SDCM <3.5	4000 K	167 lm/W	5500 lm
66172599	4MX850 491 LED40S/83 0 PSD NB SI	(0.43, 0.40) SDCM <3.5	3000 K	148 lm/W	4000 lm
66173299	4MX850 491 LED40S/8 40 PSD NB SI	(0.38, 0.38) SDCM <3.5	4000 K	160 lm/W	4000 lm

Maxos LED Industry 4MX850

Order Code	Full Product Name	Initiële kleurkwaliteit	Initiële gecorreleerde kleurtemperatuur	Initieel rendement	
				LED-armatuur	Initiële lichtstroom
66174999	4MX850 491 LED40S/83 0 PSD WB SI	(0.43, 0.40) SDCM <3.5	3000 K	148 lm/W	4000 lm
66175699	4MX850 491 LED40S/8 40 PSD WB SI	(0.38, 0.38) SDCM <3.5	4000 K	160 lm/W	4000 lm
66265499	4MX850 491 LED55S/83 0 PSD DA20 SI	(0.43, 0.40) SDCM <3.5	3000 K	157 lm/W	5500 lm
66266199	4MX850 491 LED55S/84 0 PSD DA20 SI	(0.38, 0.38) SDCM <3.5	4000 K	167 lm/W	5500 lm
66273999	4MX850 491 LED40S/83 0 PSD DA20 SI	(0.43, 0.40) SDCM <3.5	3000 K	148 lm/W	4000 lm
66274699	4MX850 491 LED40S/8 40 PSD DA20 SI	(0.38, 0.38) SDCM <3.5	4000 K	160 lm/W	4000 lm
66757499	4MX850 491 LED55S/83 0 PSD A20 SI	(0.43, 0.40) SDCM <3.5	3000 K	157 lm/W	5500 lm
66760499	4MX850 491 LED40S/83 0 PSD A20 SI	(0.43, 0.40) SDCM <3.5	3000 K	148 lm/W	4000 lm
66761199	4MX850 491 LED40S/8 40 PSD A20 SI	(0.38, 0.38) SDCM <3.5	4000 K	160 lm/W	4000 lm
66771099	4MX850 491 LED66S/84	(0.38, 0.38) SDCM <3.5	4000 K	161 lm/W	6600 lm

Order Code	Full Product Name	Initiële kleurkwaliteit	Initiële gecorreleerde kleurtemperatuur	Initieel rendement	
				LED-armatuur	Initiële lichtstroom
	0 PSD A20 SI				
66130599	4MX850 581 LED55S/84 0 PSD NB SI	(0.38, 0.38) SDCM <3.5	4000 K	167 lm/W	5500 lm
66131299	4MX850 581 LED55S/83 0 PSD WB SI	(0.43, 0.40) SDCM <3.5	3000 K	157 lm/W	5500 lm
66132999	4MX850 581 LED55S/84 0 PSD WB SI	(0.38, 0.38) SDCM <3.5	4000 K	167 lm/W	5500 lm
66177099	4MX850 581 LED40S/8 40 PSD NB SI	(0.38, 0.38) SDCM <3.5	4000 K	160 lm/W	4000 lm
66180099	4MX850 581 LED40S/83 0 PSD WB SI	(0.43, 0.40) SDCM <3.5	3000 K	148 lm/W	4000 lm
66178799	4MX850 581 LED40S/8 40 PSD WB SI	(0.38, 0.38) SDCM <3.5	4000 K	160 lm/W	4000 lm
66267899	4MX850 581 LED55S/83 0 PSD DA20 SI	(0.43, 0.40) SDCM <3.5	3000 K	157 lm/W	5500 lm
66268599	4MX850 581 LED55S/84 0 PSD DA20 SI	(0.38, 0.38) SDCM <3.5	4000 K	167 lm/W	5500 lm
66275399	4MX850 581 LED40S/83 0 PSD DA20 SI	(0.43, 0.40) SDCM <3.5	3000 K	148 lm/W	4000 lm
66276099	4MX850 581	(0.38, 0.38) SDCM <3.5	4000 K	160 lm/W	4000 lm

Maxos LED Industry 4MX850

Order Code	Full		Initiële		Initieel
	Product Name	Initiële kleurkwaliteit	gecorrigeerde kleurtemperatuur	LED-armatuur	rendement Initiële lichtstroom
	LED40S/8				
	40 PSD				
	DA20 SI				

Initiële prestaties (conform IEC) (2/2)

Order Code	Full Product Name	Initieel systeemvermogen
87641199	4MX850 581 LED80S/840 PSD NB WH	53 W
87643599	4MX850 581 LED80S/840 PSD WB WH	53 W
88105799	4MX850 581 LED80S/840 PSD NB WH C-2R	53 W
88106499	4MX850 581 LED80S/840 PSD WB WH C-2R	53 W
88107199	4MX850 581 LED66S/840 PSD NB WH C-2R	41 W
88108899	4MX850 581 LED66S/840 PSD WB WH C-2R	41 W
88250499	4MX850 581 LED80S/840 PSD VWB WH	53 W
91356799	4MX866 581 LED66S/840 PSD WB WH	45 W
97494099	4MX866 581 LED55S/840 PSD WB WH C-2R	37 W
97849899	4MX850 581 LED55S/840 PSD NB WH C-2R	33 W
22178299	4MX850 581 LED55S/840 PSD WB WH C-2R	33 W
66121399	4MX850 581 LED55S/830 PSD NB WH	35 W
66122099	4MX850 581 LED55S/840 PSD NB WH	33 W
66123799	4MX850 581 LED55S/830 PSD WB WH	35 W
66124499	4MX850 581 LED55S/840 PSD WB WH	33 W
66169599	4MX850 581 LED40S/830 PSD NB WH	27 W
66170199	4MX850 581 LED40S/840 PSD NB WH	25 W
66179499	4MX850 581 LED40S/830 PSD WB WH	27 W
66171899	4MX850 581 LED40S/840 PSD WB WH	25 W
66263099	4MX850 581 LED55S/830 PSD DA20 WH	35 W
66264799	4MX850 581 LED55S/840 PSD DA20 WH	33 W
66271599	4MX850 581 LED40S/830 PSD DA20 WH	27 W
66272299	4MX850 581 LED40S/840 PSD DA20 WH	25 W
66695999	4MX850 581 LED66S/840 PSD WB WH	41 W
66696699	4MX850 581 LED66S/840 PSD NB WH	41 W
67385899	4MX866 581 LED66S/840 PSD WB WH C-2R	45 W
88185999	4MX850 491 LED80S/840 PSD-CLO WB WH	53 W
88163799	4MX866 491 LED66S/840 PSD WB WH C-2R	45 W
88251199	4MX850 491 LED80S/840 PSD VWB WH	53 W
88464599	4MX866 491 LED55S/840 PSD WB WH	37 W
91359899	4MX850 491 LED80S/840 PSD VWB WH C-2R	53 W
91482399	4MX866 491 LED55S/840 PSD WB WH C-2R	37 W
91893799	4MX866 491 LED55S/840 PSD NB WH	37 W
97428599	4MX850 491 LED66S/840 PSD DA20 WH C-2R	41 W
97429299	4MX850 491 LED66S/840 PSD NB WH C-2R	41 W
97430899	4MX850 491 LED66S/840 PSD WB WH C-2R	41 W
97432299	4MX850 491 LED80S/840 PSD NB WH C-2R	53 W
97433999	4MX850 491 LED80S/840 PSD WB WH C-2R	53 W
97448399	4MX866 491 LED66S/840 PSD WB WH	45 W
97483499	4MX866 491 LED66S/840 PSD NB WH C-2R	45 W
07978999	4MX866 491 LED66S/840 PSD WB WH ELD1	45 W
66117699	4MX850 491 LED55S/830 PSD NB WH	35 W

Order Code	Full Product Name	Initieel systeemvermogen
66118399	4MX850 491 LED55S/840 PSD NB WH	33 W
66119099	4MX850 491 LED55S/830 PSD WB WH	35 W
66120699	4MX850 491 LED55S/840 PSD WB WH	33 W
66165799	4MX850 491 LED40S/830 PSD NB WH	27 W
66166499	4MX850 491 LED40S/840 PSD NB WH	25 W
66167199	4MX850 491 LED40S/830 PSD WB WH	27 W
66168899	4MX850 491 LED40S/840 PSD WB WH	25 W
66261699	4MX850 491 LED55S/830 PSD DA20 WH	35 W
66262399	4MX850 491 LED55S/840 PSD DA20 WH	33 W
66269299	4MX850 491 LED40S/830 PSD DA20 WH	27 W
66270899	4MX850 491 LED40S/840 PSD DA20 WH	25 W
66601099	4MX850 491 LED66S/840 PSD DA20 WH	41 W
66602799	4MX850 491 LED66S/840 PSD WB WH	41 W
66603499	4MX850 491 LED66S/840 PSD NB WH	41 W
66693599	4MX850 491 LED66S/830 PSD WB WH	44 W
66744499	4MX850 491 LED40S/840 PSD A20 WH	25 W
66745199	4MX850 491 LED55S/840 PSD A20 WH	33 W
66759899	4MX850 491 LED40S/830 PSD A20 WH	27 W
66770399	4MX850 491 LED66S/840 PSD A20 WH	41 W
67281399	4MX850 491 LED80S/840 PSD NB WH	53 W
67282099	4MX850 491 LED80S/840 PSD WB WH	53 W
67295099	4MX866 491 LED66S/840 PSD NB WH	45 W
66125199	4MX850 491 LED55S/830 PSD NB SI	35 W
66126899	4MX850 491 LED55S/840 PSD NB SI	33 W
66127599	4MX850 491 LED55S/830 PSD WB SI	35 W
66128299	4MX850 491 LED55S/840 PSD WB SI	33 W
66172599	4MX850 491 LED40S/830 PSD NB SI	27 W
66173299	4MX850 491 LED40S/840 PSD NB SI	25 W
66174999	4MX850 491 LED40S/830 PSD WB SI	27 W
66175699	4MX850 491 LED40S/840 PSD WB SI	25 W
66265499	4MX850 491 LED55S/830 PSD DA20 SI	35 W
66266199	4MX850 491 LED55S/840 PSD DA20 SI	33 W
66273999	4MX850 491 LED40S/830 PSD DA20 SI	27 W
66274699	4MX850 491 LED40S/840 PSD DA20 SI	25 W
66757499	4MX850 491 LED55S/830 PSD A20 SI	35 W
66760499	4MX850 491 LED40S/830 PSD A20 SI	27 W
66761199	4MX850 491 LED40S/840 PSD A20 SI	25 W
66771099	4MX850 491 LED66S/840 PSD A20 SI	41 W
66130599	4MX850 581 LED55S/840 PSD NB SI	33 W
66131299	4MX850 581 LED55S/830 PSD WB SI	35 W
66132999	4MX850 581 LED55S/840 PSD WB SI	33 W
66177099	4MX850 581 LED40S/840 PSD NB SI	25 W

Maxos LED Industry 4MX850

Order Code	Full Product Name	Initieel systeemvermogen
66180099	4MX850 581 LED40S/830 PSD WB SI	27 W
66178799	4MX850 581 LED40S/840 PSD WB SI	25 W
66267899	4MX850 581 LED55S/830 PSD DA20 SI	35 W

Order Code	Full Product Name	Initieel systeemvermogen
66268599	4MX850 581 LED55S/840 PSD DA20 SI	33 W
66275399	4MX850 581 LED40S/830 PSD DA20 SI	27 W
66276099	4MX850 581 LED40S/840 PSD DA20 SI	25 W

Mechanische eigenschappen en Behuizing

Order Code	Full Product Name	Lengte	
		Kleur	draagprofiel
87641199	4MX850 581 LED80S/840 PSD NB WH	White	581
87643599	4MX850 581 LED80S/840 PSD WB WH	White	581
88105799	4MX850 581 LED80S/840 PSD NB WH C-2R	White	581
88106499	4MX850 581 LED80S/840 PSD WB WH C-2R	White	581
88107199	4MX850 581 LED66S/840 PSD NB WH C-2R	White	581
88108899	4MX850 581 LED66S/840 PSD WB WH C-2R	White	581
88250499	4MX850 581 LED80S/840 PSD VWB WH	White	581
91356799	4MX866 581 LED66S/840 PSD WB WH	White	581
97494099	4MX866 581 LED55S/840 PSD WB WH C-2R	White	581
97849899	4MX850 581 LED55S/840 PSD NB WH C-2R	White	-
22178299	4MX850 581 LED55S/840 PSD WB WH C-2R	White	-
66121399	4MX850 581 LED55S/830 PSD NB WH	White	581
66122099	4MX850 581 LED55S/840 PSD NB WH	White	581
66123799	4MX850 581 LED55S/830 PSD WB WH	White	581
66124499	4MX850 581 LED55S/840 PSD WB WH	White	581
66169599	4MX850 581 LED40S/830 PSD NB WH	White	581
66170199	4MX850 581 LED40S/840 PSD NB WH	White	581
66179499	4MX850 581 LED40S/830 PSD WB WH	White	581
66171899	4MX850 581 LED40S/840 PSD WB WH	White	581
66263099	4MX850 581 LED55S/830 PSD DA20 WH	White	581
66264799	4MX850 581 LED55S/840 PSD DA20 WH	White	581
66271599	4MX850 581 LED40S/830 PSD DA20 WH	White	581
66272299	4MX850 581 LED40S/840 PSD DA20 WH	White	581
66695999	4MX850 581 LED66S/840 PSD WB WH	White	581
66696699	4MX850 581 LED66S/840 PSD NB WH	White	581
67385899	4MX866 581 LED66S/840 PSD WB WH C-2R	White	581
88185999	4MX850 491 LED80S/840 PSD-CLO WB WH	White	491
88163799	4MX866 491 LED66S/840 PSD WB WH C-2R	White	491
88251199	4MX850 491 LED80S/840 PSD VWB WH	White	491
88464599	4MX866 491 LED55S/840 PSD WB WH	White	491
91359899	4MX850 491 LED80S/840 PSD VWB WH C-2R	White	-
91482399	4MX866 491 LED55S/840 PSD WB WH C-2R	White	491
91893799	4MX866 491 LED55S/840 PSD NB WH	White	491
97428599	4MX850 491 LED66S/840 PSD DA20 WH C-2R	White	491
97429299	4MX850 491 LED66S/840 PSD NB WH C-2R	White	491
97430899	4MX850 491 LED66S/840 PSD WB WH C-2R	White	491
97432299	4MX850 491 LED80S/840 PSD NB WH C-2R	White	491
97433999	4MX850 491 LED80S/840 PSD WB WH C-2R	White	491
97448399	4MX866 491 LED66S/840 PSD WB WH	White	491
97483499	4MX866 491 LED66S/840 PSD NB WH C-2R	White	491
07978999	4MX866 491 LED66S/840 PSD WB WH ELD1	White	-
66117699	4MX850 491 LED55S/830 PSD NB WH	White	491
66118399	4MX850 491 LED55S/840 PSD NB WH	White	491
66119099	4MX850 491 LED55S/830 PSD WB WH	White	491

Order Code	Full Product Name	Lengte	
		Kleur	draagprofiel
66120699	4MX850 491 LED55S/840 PSD WB WH	White	491
66165799	4MX850 491 LED40S/830 PSD NB WH	White	491
66166499	4MX850 491 LED40S/840 PSD NB WH	White	491
66167199	4MX850 491 LED40S/830 PSD WB WH	White	491
66168899	4MX850 491 LED40S/840 PSD WB WH	White	491
66261699	4MX850 491 LED55S/830 PSD DA20 WH	White	491
66262399	4MX850 491 LED55S/840 PSD DA20 WH	White	491
66269299	4MX850 491 LED40S/830 PSD DA20 WH	White	491
66270899	4MX850 491 LED40S/840 PSD DA20 WH	White	491
66601099	4MX850 491 LED66S/840 PSD DA20 WH	White	491
66602799	4MX850 491 LED66S/840 PSD WB WH	White	491
66603499	4MX850 491 LED66S/840 PSD NB WH	White	491
66693599	4MX850 491 LED66S/830 PSD WB WH	White	491
66744499	4MX850 491 LED40S/840 PSD A20 WH	White	491
66745199	4MX850 491 LED55S/840 PSD A20 WH	White	491
66759899	4MX850 491 LED40S/830 PSD A20 WH	White	491
66770399	4MX850 491 LED66S/840 PSD A20 WH	White	491
67281399	4MX850 491 LED80S/840 PSD NB WH	White	491
67282099	4MX850 491 LED80S/840 PSD WB WH	White	491
67295099	4MX866 491 LED66S/840 PSD NB WH	White	491
66125199	4MX850 491 LED55S/830 PSD NB SI	Silver	491
66126899	4MX850 491 LED55S/840 PSD NB SI	Silver	491
66127599	4MX850 491 LED55S/830 PSD WB SI	Silver	491
66128299	4MX850 491 LED55S/840 PSD WB SI	Silver	491
66172599	4MX850 491 LED40S/830 PSD NB SI	Silver	491
66173299	4MX850 491 LED40S/840 PSD NB SI	Silver	491
66174999	4MX850 491 LED40S/830 PSD WB SI	Silver	491
66175699	4MX850 491 LED40S/840 PSD WB SI	Silver	491
66265499	4MX850 491 LED55S/830 PSD DA20 SI	Silver	491
66266199	4MX850 491 LED55S/840 PSD DA20 SI	Silver	491
66273999	4MX850 491 LED40S/830 PSD DA20 SI	Silver	491
66274699	4MX850 491 LED40S/840 PSD DA20 SI	Silver	491
66757499	4MX850 491 LED55S/830 PSD A20 SI	Silver	491
66760499	4MX850 491 LED40S/830 PSD A20 SI	Silver	491
66761199	4MX850 491 LED40S/840 PSD A20 SI	Silver	491
66771099	4MX850 491 LED66S/840 PSD A20 SI	Silver	491
66130599	4MX850 581 LED55S/840 PSD NB SI	Silver	581
66131299	4MX850 581 LED55S/830 PSD WB SI	Silver	581
66132999	4MX850 581 LED55S/840 PSD WB SI	Silver	581
66177099	4MX850 581 LED40S/840 PSD NB SI	Silver	581
66180099	4MX850 581 LED40S/830 PSD WB SI	Silver	581
66178799	4MX850 581 LED40S/840 PSD WB SI	Silver	581
66267899	4MX850 581 LED55S/830 PSD DA20 SI	Silver	581
66268599	4MX850 581 LED55S/840 PSD DA20 SI	Silver	581

Maxos LED Industry 4MX850

Order Code	Full Product Name	Lengte	
		Kleur	draagprofiel
66275399	4MX850 581 LED40S/830 PSD DA20 SI	Silver	581

Order Code	Full Product Name	Lengte	
		Kleur	draagprofiel
66276099	4MX850 581 LED40S/840 PSD DA20 SI	Silver	581

