



# AmphiLux recessed – light up your outdoor social areas

## AmphiLux, recessed

People want to spend more quality time outdoors with family and friends. The AmphiLux recessed spotlight range is designed to enhance outdoor social areas (gardens, terraces, fountains, waterfalls, etc.) with architectural lighting. AmphiLux is a family of LED spots featuring a stunning, sleek Italian design with a stylish chrome finish. These solutions can be used under water and in semi-wet and dry environments. Available in Micro, Mini and Compact sizes, the range offers a choice of dynamic white-light and colored-light versions for maximum flexibility in tasteful flood and accent lighting.

### Benefits

- All mono-color products are powered via a standard 12 V DC driver, making them safe in human-occupied water and extremely easy to install.
- The dynamic color spots provide a rich color spectrum (RGBW), from fully saturated to soft pastel colors; the color-temperature-variation spots create a variety of white tones.
- The use of LEDs and quality optics make the AmphiLux spots very energy-efficient, with energy savings of up to 80% possible, depending on the application.

### Features

- Sleek, attractive design
- Highly efficient, low-power LED spots
- Every spot available in the mono-colors high-quality white (2700, 4000, 6000 K) and blue
- Mini and Compact spots also available in dynamic versions with RGBW or color-temperature variation
- IP68-rated for underwater use, but also suitable for dry environments
- Very installation-friendly due to 12 V DC driver system for all mono-color spots

## AmphiLux, recessed

### Application

- Architectural flood and accent lighting in fountains, waterfalls, gardens or on buildings

### Specifications

<b>Type</b>	BBD400 Micro (1 x LED, Mono color version)
	BBC400 Micro (1 x LED, Mono color version)*
	BBD410 Mini (4 x LED, Mono and Dynamic color version)
	BBD420 Compact (12 x LED, Mono and Dynamic color version)
	*special plastic version for harsh environments
<b>Light source</b>	Non replaceable LED-module
<b>Power</b>	Micro versions: 1.5 W
	Mini version (Mono color): 5 W
	Mini version (Dynamic color): 4 W
	Compact version (Mono color): 15 W
	Compact version (Dynamic color): 12 W
<b>Beam angle</b>	Micro versions: 10, 20 and 35°
	Mini and Compact versions: 10 and 40°
<b>Luminous flux</b>	Micro versions: +/- 60 lm
	Mini version: +/- 240 lm
	Compact version: +/- 720 lm
<b>Correlated Color Temperature</b>	2700, 4000 and 6000 K for the Mono color versions
<b>Color Rendering Index</b>	2700 - 6000 K for tunable white
	> 80 (2700 and 4000 K)
	> 70 (6000 K)
<b>Maintenance of lumen output - L90</b>	43.000 hours at 35°C
<b>Maintenance of lumen output - L70</b>	147.000 hours at 35°C

<b>Maintenance of lumen output - L50</b>	> 200.000 hours at 35°C
<b>Operating temperature range</b>	-20 to +35°C
<b>Driver</b>	Built-in for Mono color versions
	External (DMX-RDM driver) for Dynamic color versions
<b>Mains voltage</b>	12 V DC for Mono color versions
<b>Material</b>	Housing:
	- BBD versions: chromed brass
	- BBC version: ertacetal
	Optical cover: hardened glass
<b>Corrosion resistance</b>	For BBD versions:
	- Salt water resistant up to 35gr/L salinity
	- Chlorine resistant if water has a stable PH level between 6.8 and 8
	- If these levels are exceeded, use the BBC range of products
<b>Color</b>	BBD versions: chrome
	BBC versions: white
<b>Connection</b>	Flying leads
<b>Installation</b>	Recessed mounting. For in ground (concrete etc.) use the matching ZBD400 RMB recessed box
<b>Accessories</b>	Recessed box, ZBD400 RMB

### Versions



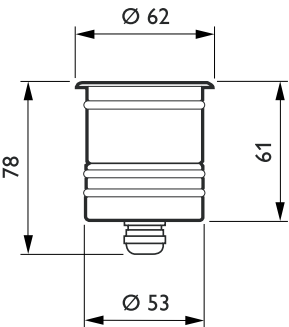
AmphiLux BBD410 recessed Mini spotlight with narrow or medium beam angle



AmphiLux BBD420 recessed Compact spotlight with narrow or medium beam angle

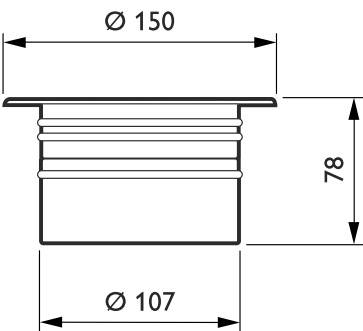
AmphiLux, recessed

Dimensional drawing



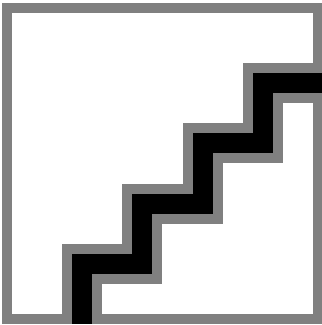
AmphiLux BBD/BVD400

AmphiLux BBD/BVD400

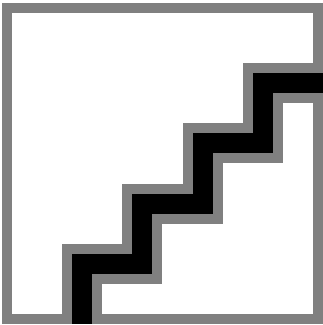


AmphiLux BBD/BVD400

Product details



AmphiLux BBD410 recessed Mini  
spotlight with recessed box ZBD401



AmphiLux BBD420 recessed Compact  
spotlight with recessed box ZBD402

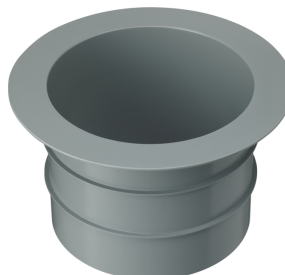
# AmphiLux, recessed

## Accessories



Recessed mounting box for  
AmphiLux BBC410

Ordercode 89511399



Recessed mounting box for  
AmphiLux BBD420

Ordercode 89512099



ZBD408 power supply unit DMX/RDM  
2 x 4 channels

Ordercode 89513799

### Approval and Application

Mech. Impact protection code IK10

### Controls and Dimming

Dimmable No

### General Information

CE mark CE mark

Optical cover/lens type No

Driver included No

Lamp family code LED-HB

Light source replaceable No

Lifetime to 50% luminous flux 200000

Lifetime to 70% luminous flux 147000

Lifetime to 90% luminous flux 43000

### Over Time Performance (IEC Compliant)

Driver failure rate at 5000 h 1

### General Information

order code	Light source color	Number of light sources	Optic type	Product Family Code
89316499	Blue	1	Narrow beam angle 10°	BBD400
89319599	Warm white	1	Medium beam angle 20°	BBD400
89322599	Neutral white	1	Medium beam angle 35°	BBD400
89323299	Warm white	1	Medium beam angle 35°	BBD400
89327099	Warm white	1	Narrow beam angle 10°	BBC400
89330099	Neutral white	1	Medium beam angle 20°	BBC400
89331799	Warm white	1	Medium beam angle 20°	BBC400
89469799	Warm white	4	Narrow beam angle 10°	BBD410
89470399	Warm white	4	Medium beam angle 40°	BBD410
89471099	Neutral white	4	Narrow beam angle 10°	BBD410
89472799	Neutral white	4	Medium beam angle 40°	BBD410
89499499	Warm white	12	Narrow beam angle 10°	BBD420
89500799	Warm white	12	Medium beam angle 40°	BBD420

### Initial Performance (IEC Compliant)

order code	Init. Corr. Color Temperature	Init. Color Rendering Index	Initial luminous flux
89316499	-	-	14
89319599	2700 K	80	55
89322599	4000 K	80	60
89323299	2700 K	80	55
89327099	2700 K	80	55

order code	Init. Corr. Color Temperature	Init. Color Rendering Index	Initial luminous flux
89330099	4000 K	80	60
89331799	2700 K	80	55
89469799	2700 K	80	220
89470399	2700 K	80	220
89471099	4000 K	80	240

AmphiLux, recessed

order code	Init. Corr. Color Temperature	Init. Color Rendering Index	Initial luminous flux
89472799	4000 K	80	240
89499499	2700 K	80	660

order code	Init. Corr. Color Temperature	Init. Color Rendering Index	Initial luminous flux
89500799	2700 K	80	660

