



SmartForm – top-class lighting in a fresh, appealing design

SmartForm LED BCS460

We all feel and perform better in a pleasant, comfortable working environment. Designed for use in offices, shops and schools, the SmartForm family of surface-mounted luminaires combines best-in-class lighting with a clean, distinctive design. These ultra-flat luminaires are available with a choice of MASTER TL5, TL5 ECO or LED light sources in rectangular and square versions. They can also be used to form light-lines and structures. With its wide choice of very efficient and comfortable micro-optics and covers, SmartForm surface-mounted provides the ideal solution for every situation. Lighting controls can be added for further energy saving.

Benefits

- Top-class lighting performance meets all project requirements
- Fresh-looking design
- Energy-efficient

Features

- Very slim housing – only 47 mm deep
- State-of-the-art LED lighting
- High-efficiency optical covers
- Possibility to add lighting controls

Application

- Offices
- Shops
- Schools

Specifications

SmartForm LED BCS460

Type	BCS460
Light source	Philips Fortimo LED Line 3R
Power (steady state in W, +/- 10%)	LED24: 25 W LED48: 47 W
Beam angle	80-100° (depending on configuration)
Luminous flux	1650-4300 lm (depending on configuration)
Correlated Color Temperature	4000 K
Color Rendering Index	≥ 80
Median useful life L70B50	70,000 hours
Median useful life L80B50	50,000 hours
Median useful life L90B50	25,000 hours
Driver failure rate	1% per 5000 hours
Average ambient temperature	+25 °C
Operating temperature range	+10 to +40 °C

Driver	Built-in
Mains voltage	230 or 240 V / 50-60 Hz
Material	Housing: zinc-coated steel
Color	White, RAL 9016 based Optional white RAL 9010 or silver grey RAL 9006 based
Optical cover	1, 2-lamp version: - OLC micro-lens optic in polycarbonate cover (MLO-PC) - Linear lens array optic in polycarbonate cover (LIN-PC) 3-lamp version: - OLC micro-lens optic made of acrylate (AC-MLO)
Connection	Push-in connection with pull relief (PIP) Cable, length 200 cm, with plug CEE7 (CCE)
Installation	Individual; clicking the luminaire into pre-screwed ceiling brackets Through-wiring possible Installation without removing LED module and optic/cover
Remarks	Protection foil to protect the optic during installation

Versions

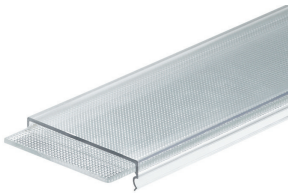


SmartForm LED BCS460 surface-mounted luminaire with OLC micro-lens optic in polycarbonate cover (MLO-PC)



SmartForm LED BCS460 surface-mounted luminaire with OLC micro-lens optic in polycarbonate cover (MLO-PC)

Product details



Polycarbonate micro-lens optic

SmartForm LED BCS460

Application Conditions

Ambient temperature range	+10 to +40 °C
Maximum dim level	1%

Approval and Application

Mech. impact protection code	IK07
Ingress protection code	IP40

Controls and Dimming

Dimmable	Yes
----------	-----

Operating and Electrical

Input Voltage	220 to 240 V
---------------	--------------

General Information

CE mark	CE mark
Parts color	-
Protection class IEC	Safety class I
Optical cover/lens type	Micro-lens optic in polycarbonate cover
Driver included	Yes
Emergency lighting	-
ENEC mark	ENEC mark
Glow-wire test	Temperature 850 °C, duration 5 s
Light source replaceable	No
Number of light sources	1 pc
Product Family Code	BCS460
Top reflector	-
Internal wiring	Standard

Initial Performance (IEC Compliant)

Init. Corr. Color Temperature	4000 K
Init. Color Rendering Index	≥80

Mechanical and Housing

Color	White
-------	-------

Application Conditions

Order Code	Full Product Name	Suitable for random switching
910501982103	BCS460 LED48/840 PSD W22L124 MLO-PC ACL	Yes (relates to presence/ movement detection and daylight harvesting)
910504077303	BCS460 LED24/840 PSD W16L124 MLO-PC	No

General Information (1/2)

Order Code	Full Product Name	Beam angle			Lamp family code
		of light source	Cap-Base	Flammability mark	
910501982103	BCS460 LED48/840 PSD W22L124 MLO-PC ACL	-	-	-	LED48

Order Code	Full Product Name	Beam angle			Lamp family code
		of light source	Cap-Base	Flammability mark	
910504077303	BCS460 LED24/840 PSD W16L124 MLO-PC	- °	-	For mounting on normally flammable surfaces	LED24

General Information (2/2)

SmartForm LED BCS460

Order Code	Full Product Name	Embedded control	Number of gear units	Optic type	UL mark
910501982103	BCS460 LED48/840 PSD W22L124 MLO-PC ACL	ActiLume	-	-	-

Order Code	Full Product Name	Embedded control	Number of gear units	Optic type	UL mark
910504077303	BCS460 LED24/840 PSD W16L124 MLO-PC	-	1 unit	-	-

Initial Performance (IEC Compliant) (1/2)

Order Code	Full Product Name	Initial chromaticity	Initial LED luminaire efficacy	Initial luminous flux	Luminous flux tolerance
910501982103	BCS460 LED48/840 PSD W22L124 MLO-PC ACL	(0.38, 0.38) SDCM <3.5	91 lm/W	3500 lm	-

Order Code	Full Product Name	Initial chromaticity	Initial LED luminaire efficacy	Initial luminous flux	Luminous flux tolerance
910504077303	BCS460 LED24/840 PSD W16L124 MLO-PC	(0.38, 0.38) SDCM <3	81 lm/W	1750 lm	+/-10%

Initial Performance (IEC Compliant) (2/2)

Order Code	Full Product Name	Initial input power
910501982103	BCS460 LED48/840 PSD W22L124 MLO-PC ACL	38.5 W

Order Code	Full Product Name	Initial input power
910504077303	BCS460 LED24/840 PSD W16L124 MLO-PC	21.5 W

Mechanical and Housing

Order Code	Full Product Name	Geometry
910501982103	BCS460 LED48/840 PSD W22L124 MLO-PC ACL	Width 0.22 m, length 1.24 m

Order Code	Full Product Name	Geometry
910504077303	BCS460 LED24/840 PSD W16L124 MLO-PC	Width 0.16 m, length 1.24 m

