



Celino – light beam

Celino LED BCS680 C

Celino is a complete luminaire range that reflects the market trend towards miniaturization and architectural integration, while delivering a significant advance in optical performance. Celino features Philips' aluminum micro optic with 3D lamellae, which ensures optimum visual comfort and efficiency in compliance with the latest office-lighting norm (EN 12464-1). Made of natural anodized aluminum, the housing of Celino is a mere 71 mm wide and has die-cast-aluminum end caps. The design allows multiple luminaires to be connected in a line arrangement. Celino is available as a full range – suspended, surface-mounted, free-standing and wall-mounted, with a choice of TL5, TL5 Eco or LED light sources – for maximum freedom in application.

Benefits

- Complete luminaire range that reflects the trend to miniaturization and architectural integration
- Excellent optical performance: optical covers for optimum visual comfort and efficiency

Features

- Inspiring: aesthetical and novel design with visually better ceiling integration
- Comfort: spacious and pleasant environment with comfortable lighting appearance
- Efficient: high efficacy achieved with optics innovation

Application

- Open plan office
- Meeting room
- Reception area
- Cell office
- Lounge

Specifications

Type	BCS680
Light source	Non-replaceable LED module

Power	30 W (for LED24)
	52 W (for LED48)
Luminous flux	1800-4200 lm (dependant on configuration)

Celino LED BCS680 C

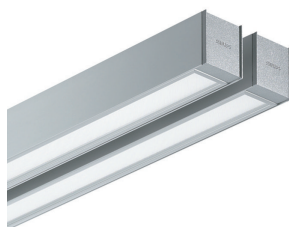
Correlated Color Temperature	4000 K
Color Rendering Index	80
Maintenance of lumen output - L90	25,000 hours at 25°C
Maintenance of lumen output - L70	50,000 hours at 25°C
Operating temperature range	25°C
Driver	Built-in PSU: fixed output driver, PSD: dimmable driver
Mains voltage	220-240 V / 50-60 Hz
Dimming	DALI

Material	Housing: natural anodized aluminum End caps: die-cast aluminum
Color	Aluminum (ALU)
Optical cover	OLC micro-lens optic in polycarbonate cover (MLO-PC) Opal optic in polycarbonate cover (O-PC) Linear lens array optic in polycarbonate cover (LIN-PC)
Installation	Individual, by clicking the luminaire into pre-screwed ceiling brackets to the ceiling Installation without removing light source and optical cover
Remarks	W7L120: indicating same size as Celino conventional TL5 1-lamp version W17L120: indicating same size as Celino conventional TL5 2-lamps version

Versions



BCS680 C LED24



BCS680 C LED48

Product details

LED light engine: easy replacement



Light effect: circles



Light effect: lines/crosses



Opal cover



Celino LED BCS680 C

Application Conditions

Ambient temperature range	-20 to +40 °C
Suitable for random switching	No

Approval and Application

Mech. impact protection code	IK03
Ingress protection code	IP20

Operating and Electrical

Input Voltage	220-240 V
---------------	-----------

General Information

Beam angle of light source	120 °
CE mark	-
Protection class IEC	Safety class I
Driver included	Yes
ENEC mark	-
Flammability mark	-
Glow-wire test	Temperature 650 °C, duration 30 s
Light source replaceable	No
Number of gear units	1 unit
Optic type	Wide beam

Initial Performance (IEC Compliant)

Initial chromaticity	(0.38, 0.38) SDCM <4
Init. Corr. Color Temperature	4000 K
Init. Color Rendering Index	>80
Luminous flux tolerance	+/-7.5%

Mechanical and Housing

Color	Silver
-------	--------

Application Conditions

Order Code	Full Product Name	Maximum dim level
911401538601	BCS680 C LED24/840 PSD W7L120 MLO-PC	10%
911401538801	BCS680 C LED24/840 PSD W7L120 O-PC	10%
911401538901	BCS680 C LED24/840 PSU W7L120 MLO-PC	-
911401539001	BCS680 C LED24/840 PSU W7L120 LIN-PC	-
911401539101	BCS680 C LED24/840 PSU W7L120 O-PC	-
911401539501	BCS680 C LED48/840 PSU W17L120 O-PC	-
911401539601	BCS680 C LED48/840 PSD W17L120 O-PC	10%

Controls and Dimming

Order Code	Full Product Name	Dimmable
911401538601	BCS680 C LED24/840 PSD W7L120 MLO-PC	Yes
911401538801	BCS680 C LED24/840 PSD W7L120 O-PC	Yes
911401538901	BCS680 C LED24/840 PSU W7L120 MLO-PC	No
911401539001	BCS680 C LED24/840 PSU W7L120 LIN-PC	No

Order Code	Full Product Name	Dimmable
911401539101	BCS680 C LED24/840 PSU W7L120 O-PC	No
911401539501	BCS680 C LED48/840 PSU W17L120 O-PC	No
911401539601	BCS680 C LED48/840 PSD W17L120 O-PC	Yes

General Information

Order Code	Full Product Name	Optical cover/lens type	Lamp family code
911401538601	BCS680 C LED24/840 PSD W7L120 MLO-PC	Micro-lens optic in polycarbonate cover	LED24
911401538801	BCS680 C LED24/840 PSD W7L120 O-PC	Opal diffuser in polycarbonate cover	LED24
911401538901	BCS680 C LED24/840 PSU W7L120 MLO-PC	Micro-lens optic in polycarbonate cover	LED24

Order Code	Full Product Name	Optical cover/lens type	Lamp family code
911401539001	BCS680 C LED24/840 PSU W7L120 LIN-PC	Linear-lens array in polycarbonate cover	LED24
911401539101	BCS680 C LED24/840 PSU W7L120 O-PC	Opal diffuser in polycarbonate cover	LED24

Celino LED BCS680 C

Order Code	Full Product Name	Optical cover/lens type	Lamp family code
911401539501	BCS680 C LED48/840 PSU W17L120 O-PC	Opal diffuser in polycarbonate cover	LED48

Order Code	Full Product Name	Optical cover/lens type	Lamp family code
911401539601	BCS680 C LED48/840 PSD W17L120 O-PC	Opal diffuser in polycarbonate cover	LED48

Initial Performance (IEC Compliant)

Order Code	Full Product Name	Initial LED luminaire efficacy	Initial luminous flux	Initial input power
911401538601	BCS680 C LED24/840 PSD W7L120 MLO-PC	67.000 lm/W	1800 lm	30 W
911401538801	BCS680 C LED24/840 PSD W7L120 O-PC	71.000 lm/W	2100 lm	30 W
911401538901	BCS680 C LED24/840 PSU W7L120 MLO-PC	67.000 lm/W	1800 lm	32 W
911401539001	BCS680 C LED24/840 PSU W7L120 LIN-PC	83.000 lm/W	2300 lm	32 W

Order Code	Full Product Name	Initial LED luminaire efficacy	Initial luminous flux	Initial input power
911401539101	BCS680 C LED24/840 PSU W7L120 O-PC	71.000 lm/W	2100 lm	32 W
911401539501	BCS680 C LED48/840 PSU W17L120 O-PC	71.000 lm/W	2100 lm	52 W
911401539601	BCS680 C LED48/840 PSD W17L120 O-PC	71.000 lm/W	2100 lm	51 W

Mechanical and Housing

Order Code	Full Product Name	Geometry
911401538601	BCS680 C LED24/840 PSD W7L120 MLO-PC	Width 0.07 m, length 1.20 m
911401538801	BCS680 C LED24/840 PSD W7L120 O-PC	Width 0.07 m, length 1.20 m
911401538901	BCS680 C LED24/840 PSU W7L120 MLO-PC	Width 0.07 m, length 1.20 m
911401539001	BCS680 C LED24/840 PSU W7L120 LIN-PC	Width 0.07 m, length 1.20 m

Order Code	Full Product Name	Geometry
911401539101	BCS680 C LED24/840 PSU W7L120 O-PC	Width 0.07 m, length 1.20 m
911401539501	BCS680 C LED48/840 PSU W17L120 O-PC	Width 0.17 m, length 1.20 m
911401539601	BCS680 C LED48/840 PSD W17L120 O-PC	Width 0.17 m, length 1.20 m

