



# Celino – light beam

## Celino LED BCS680 C

Celino is a complete luminaire range that reflects the market trend towards miniaturization and architectural integration, while delivering a significant advance in optical performance. Celino features Philips' aluminum micro optic with 3D lamellae, which ensures optimum visual comfort and efficiency in compliance with the latest office-lighting norm (EN 12464-1). Made of natural anodized aluminum, the housing of Celino is a mere 71 mm wide and has die-cast-aluminum end caps. The design allows multiple luminaires to be connected in a line arrangement. Celino is available as a full range – suspended, surface-mounted, free-standing and wall-mounted, with a choice of TL5, TL5 Eco or LED light sources – for maximum freedom in application.

### Benefícios

- Complete luminaire range that reflects the trend to miniaturization and architectural integration
- Excellent optical performance: optical covers for optimum visual comfort and efficiency

### Características

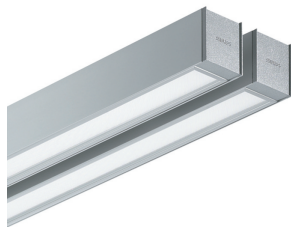
- Inspiring: aesthetical and novel design with visually better ceiling integration
- Comfort: spacious and pleasant environment with comfortable lighting appearance
- Efficient: high efficacy achieved with optics innovation

### Aplicação

- Open plan office
- Meeting room
- Reception area
- Cell office
- Lounge

# Celino LED BCS680 C

## Versions



## Detalhes do produto

