



CitySphere – creating an appealing, comfortable atmosphere with its own color signature

CitySphere

At a time of rapidly changing social practices, every city is looking to be more attractive, welcoming, convenient and safe. CitySphere is a post-top ambiance LED luminaire designed to create a comfortable and pleasant atmosphere that puts the users of public spaces at ease. A slim, discreet presence during the day, it brings urban spaces to life at night. CitySphere delivers a visually comfortable volume of light and gives the city its own color signature. CitySphere comes with dedicated spigots, brackets and poles, enabling development planners, specifiers and decision makers to create a consistent urban identity and ambience.

Benefits

- Creates an appealing, comfortable atmosphere
- Brings cities to life at night with a touch of color
- Complete lighting solution ensuring a consistent and distinctive identity (color ring)

Features

- Visual comfort perception and a possible color signature, creating a distinctive atmosphere
- Energy-efficient
- Excellent light quality over lifetime
- Dedicated spigots, single and double-arm brackets, and masts (height of 4 to 5 meters)

Application

- Urban streets
- Side and residential streets
- Pedestrian and cycle paths
- Squares and parks

Specifications

Type	BDP780 (version with white ring 1, 56 LEDs)
	BDP781 (version with white ring 2, 28 LEDs)
	BDP782 (version with white ring 3, 16 LEDs)
Light source	Integral LED-module
Power	14 to 115 W
Luminous flux	GreenLine: 1148 to 5810 lm
	EconomyLine: 1985 to 9816 lm
Luminaire efficacy	Up to 89 lm/W (3000 K, warm white)
	Up to 107 lm/W (4000 K, neutral white)
Correlated Color Temperature	3000 or 4000 K
Color Rendering Index	80 (3000 K, warm white)
	70 (4000 K, neutral white)
Maintenance of lumen output - L80F10	GreenLine: 100,000 hours
	EconomyLine: 70,000 hours
Operating temperature range	-20 to 35 °C
Driver	Philips Xitanium Driver
Mains voltage	220-240 V / 50-60 Hz
Controls system input	1-10 V and DALI
Dimming	LumiStep 6, 7, 8 or 10 hours
	DynaDimmer
	AmpDim
	SDU
	External dimming 1-10 V
	CityTouch (not available for CitySphere with color ring)

Options	Color ring
	Surge protection (SGR)
Optic	Distribution street pedestrian (DSP), medium (DM), wide (DW) or symmetrical (DS)
Optical element	PMMA lenses
Optical cover	UV-stabilised polycarbonate bowl, clear or ribbed shade
Material	Housing: high-pressure aluminum
	Adapting piece: die-cast aluminum
	LED module: extruded aluminum
	Optic: PMMA lenses
Color	Philips ultra dark grey 10714
	Other RAL or AKZO Futura colors available on request
Connection	Push-in connector 5-pole (IP66)
Maintenance	Control gear access after opening 4 screws
Installation	Basic spigot Ø 60 or 76 mm (60P, 76P) or decorative spigot (90PD)
	Recommended mounting height: 4-6 m
	Max SCx: 0.1 m²
	Dedicated poles and brackets available for different mounting possibilities

Versions



CitySphere BDP780/781/782 with basic spigot and ribbed bowl

Product details



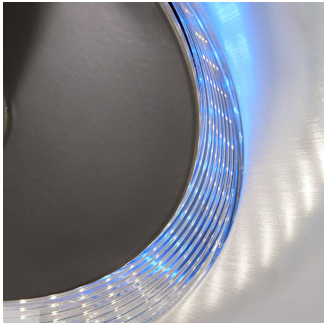
White and color ring



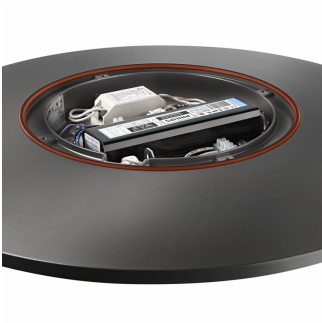
Basic spigot



Close-up of aluminum used for housing



Close-up of bowl interior



Access to driver compartment



White and color ring

Product details



White and color ring

Approval and Application

Mech. impact protection code	IK10
Surge Protection (Common/Differential)	Philips standard surge protection level kV

General Information

CE mark	CE mark
Optical cover/lens type	PC-UV
Driver included	Yes
ENEC mark	ENEC mark
Flammability mark	F
Glow-wire test	650/5
Light source replaceable	No

Light Technical

Standard tilt angle side entry	0°
Standard tilt angle posttop	0°
Upward light output ratio	0.03

Mechanical and Housing

Colour	Dark gray
--------	-----------

Application Conditions

Order Code	Full Product Name	Maximum dim level
17633500	BDP780 GRN60/830 PSU DS RB DGR CLO 60P	-
17637300	BDP780 GRN60/740 PSU DS RB DGR CLO 60P	-
17645800	BDP781 GRN30/740 PSU DS RB DGR CLO 60P	-
17662500	BDP780 GRN60/740 PSU II DW RB DGR 76P	-
17688500	BDP780 ECO120/740/GN PSD DM RB DGR D9 60	10%
17695300	BDP781 GRN25/740/BL PSU II DM RB DGR CLO	-

Controls and Dimming

Order Code	Full Product Name	Dimmable
17633500	BDP780 GRN60/830 PSU DS RB DGR CLO 60P	No
17637300	BDP780 GRN60/740 PSU DS RB DGR CLO 60P	No
17645800	BDP781 GRN30/740 PSU DS RB DGR CLO 60P	No

Order Code	Full Product Name	Dimmable
17662500	BDP780 GRN60/740 PSU II DW RB DGR 76P	No
17688500	BDP780 ECO120/740/GN PSD DM RB DGR D9 60	Yes
17695300	BDP781 GRN25/740/BL PSU II DM RB DGR CLO	No

General Information (1/2)

Order Code	Full Product Name	Luminaire light beam spread	Light source colour	Lamp family code	Number of gear units
17633500	BDP780 GRN60/830 PSU DS RB DGR CLO 60P	148° x 148°	830 warm white	GRN60	1 unit

Order Code	Full Product Name	Luminaire light beam spread	Light source colour	Lamp family code	Number of gear units
17637300	BDP780 GRN60/740 PSU DS RB DGR CLO 60P	148° x 148°	740 neutral white	GRN60	1 unit

Order Code	Full Product Name	Luminaire light beam spread	Light source colour	Lamp family code	Number of gear units
17645800	BDP781 GRN30/740 PSU DS RB DGR CLO 60P	148° x 148°	740 neutral white	GRN30	1 unit
17662500	BDP780 GRN60/740 PSU II DW RB DGR 76P	148° x 106°	740 neutral white	GRN60	1 unit

Order Code	Full Product Name	Luminaire light beam spread	Light source colour	Lamp family code	Number of gear units
17688500	BDP780 ECO120/740/GN PSD DM RB DGR D9 60	148° x 88°	740 neutral white	ECO120	2 units
17695300	BDP781 GRN25/740/BL PSU II DM RB DGR CLO	148° x 88°	740 neutral white	GRN25	2 units

General Information (2/2)

Order Code	Full Product Name	Optic type	Product Family Code
17633500	BDP780 GRN60/830 PSU DS RB DGR CLO 60P	Distribution symmetrical	BDP780
17637300	BDP780 GRN60/740 PSU DS RB DGR CLO 60P	Distribution symmetrical	BDP780
17645800	BDP781 GRN30/740 PSU DS RB DGR CLO 60P	Distribution symmetrical	BDP781

Order Code	Full Product Name	Optic type	Product Family Code
17662500	BDP780 GRN60/740 PSU II DW RB DGR 76P	Distribution wide	BDP780
17688500	BDP780 ECO120/740/GN PSD DM RB DGR D9 60	Distribution medium	BDP780
17695300	BDP781 GRN25/740/BL PSU II DM RB DGR CLO	Distribution medium	BDP781

Initial Performance (IEC Compliant)

Order Code	Full Product Name	Init. Corr. Colour Temperature	Init. Colour Rendering Index	Initial luminous flux
17633500	BDP780 GRN60/830 PSU DS RB DGR CLO 60P	3000 K	80	4590 lm
17637300	BDP780 GRN60/740 PSU DS RB DGR CLO 60P	4000 K	70	4590 lm
17645800	BDP781 GRN30/740 PSU DS RB DGR CLO 60P	4000 K	70	2295 lm

Order Code	Full Product Name	Init. Corr. Colour Temperature	Init. Colour Rendering Index	Initial luminous flux
17662500	BDP780 GRN60/740 PSU II DW RB DGR 76P	4000 K	70	4830 lm
17688500	BDP780 ECO120/740/GN PSD DM RB DGR D9 60	4000 K	70	9600 lm
17695300	BDP781 GRN25/740/BL PSU II DM RB DGR CLO	4000 K	70	2000 lm

