



# Selenium LED – simply efficient

## Selenium LED

Selenium LED is a cost-effective road-lighting luminaire, which delivers over 60% energy saving compared with conventional solutions. Its simple, rounded form reduces its daytime visual impact, allowing it to integrate into any kind of environment. The LEDGINE technology inside the luminaire ensures an efficient and uniform light distribution, covering the widest possible range of applications. And installation and maintenance could not be simpler: connectors and driver are directly accessible, without the use of tools.

### Benefits

- Simplicity – limited configurations
- Efficient, without compromising on light quality
- Easy installation and maintenance

### Features

- LEDGINE technology inside
- Flat glass
- Direct access to connectors and driver; no tools required

### Application

- Roads: intra and inter-urban motorized traffic /major roads
- Streets: mixed traffic
- Car parks, roundabouts

## Specifications

Type	BGP340
Light source	Integral LED-module
Power (+/-10%)	29 to 94 W
Luminous flux	3680 to 11,040 lm

Luminaire efficacy	>105 lm/W
Correlated Color	4000 K
Temperature	
Color Rendering Index	> 76

# Selenium LED

<b>Maintenance of lumen output - L80F10</b>	60,000 hours
<b>Driver failure rate</b>	0,05% per 5000 hours
<b>Operating temperature range</b>	-30 to +45 °C
<b>Driver</b>	Separate (non-self ballasted LED-module)
<b>Mains voltage</b>	220-240 V / 50-60 Hz
<b>Inrush current</b>	80 A / 150 µS
<b>Dimming</b>	Dynadimmer Mains dimming Dimming via Telemanagement RF
<b>Controls system input</b>	1-10 V and DALI
<b>Options</b>	RF Antenne Photocell Constant Light Output (CLO) Nemasocket Mains dimming (D13) Marine salt protected coating (MSP) Surge protection up to 10 kV Stand alone dimming via Dynadimmer (DDF) External dimming: DALI or 1-10 V (D7 or D9) Knife connector (KC)

<b>Optic</b>	Medium beam
<b>Optical cover</b>	Glass, flat
<b>Material</b>	Housing: high-pressure, die-cast aluminum Optics: plastic (PC) Gasket: silicone rubber, heat resistant Cover: glass, thermally hardened
<b>Color</b>	RAL7035 Other RAL colors available on request
<b>Connection</b>	Wieland
<b>Maintenance</b>	Opening by one clip
<b>Installation</b>	Post top mounting: Ø 60 / 76 mm Side entry mounting: Ø 34 / 60 mm Reversible spigot for side-entry and post-top Recommended mounting height: 5 to 12 m Standard tilt angle post top: 5° Adjustable tilt angle: 0°, 5° and 15° Max SCx: 0.077 m²

## Versions

Selenium LED BGP340 road-lighting luminaire



## Product details

Tilttable spigot, allowing installation on mast



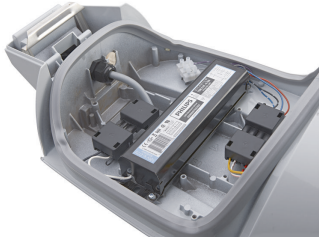
Easy installation thanks to tool-less access to connectors



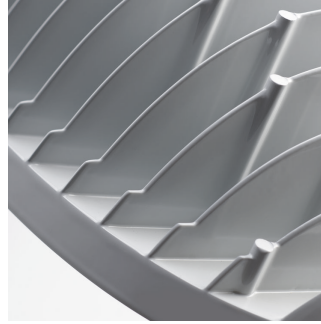
# Selenium LED

## Product details

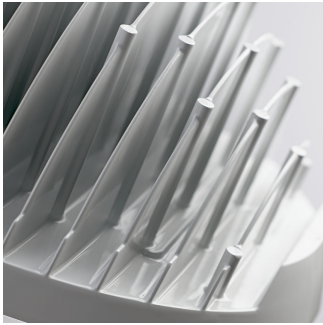
Integrated dimming options



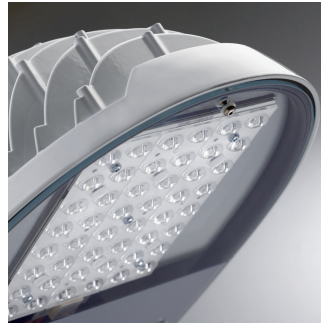
Thermal management



Thermal management



Dark-sky preservation with 0 cd at 90° thanks to the flat glass



Selenium LED with RF antenna



LEDGINE technology inside



Tilttable spigot, allowing installation on any tilted bracket



# Selenium LED

## Approval and Application

Mech. impact protection code	IK08
Surge Protection (Common/ Differential)	6/4 kV

## General Information

Luminaire light beam spread	160°
CE mark	CE mark
Light source colour	740 neutral white
Optical cover/lens type	FG
Driver included	Yes
Flammability mark	NO
Glow-wire test	960/5
Light source replaceable	Yes
Lamp version	3S
Number of gear units	1 unit
Number of light sources	1
Optic type	Distribution medium
Product Family Code	BGP340

## Initial Performance (IEC Compliant)

Init. Corr. Colour Temperature	4000 K
Init. Colour Rendering Index	≥70

## Light Technical

Standard tilt angle side entry	0°
Standard tilt angle posttop	0°
Upward light output ratio	0

## Mechanical and Housing

Colour	Aluminum and gray
--------	----------------------

## Application Conditions

Order Code	Full Product Name	Maximum dim level
06342100	BGP340 LED37--3S/740 PSU I DM 48/60	-
06343800	BGP340 LED55--3S/740 PSU I DM 48/60	-
06344500	BGP340 LED74--3S/740 PSU I DM 48/60	-
06345200	BGP340 LED92--3S/740 PSU I DM 48/60	-
06346900	BGP340 LED110--3S/740 PSU I DM 48/60	-
06347600	BGP340 LED37--3S/740 PSU II DM 48/60	-
06348300	BGP340 LED55--3S/740 PSU II DM 48/60	-
06349000	BGP340 LED74--3S/740 PSU II DM 48/60	-
06350600	BGP340 LED92--3S/740 PSU II DM 48/60	-
06351300	BGP340 LED110--3S/740 PSU II DM 48/60	-
06370400	BGP340 LED92--3S/740 PSR I DM DDF1 48/60	10%
06371100	BGP340 LED110--3S/740 PSR I DM DDF1 48/6	10%
06372800	BGP340 LED37--3S/740 PSR II DM DDF1 48/6	10%
06373500	BGP340 LED55--3S/740 PSR II DM DDF1 48/6	10%
06374200	BGP340 LED74--3S/740 PSR II DM DDF1 48/6	10%
06375900	BGP340 LED92--3S/740 PSR II DM DDF1 48/6	10%
06376600	BGP340 LED110--3S/740 PSR II DM DDF1 48/	10%
06377300	BGP340 LED37--3S/740 PSR I DM DDF2 48/60	10%
06378000	BGP340 LED55--3S/740 PSR I DM DDF2 48/60	10%
06379700	BGP340 LED74--3S/740 PSR I DM DDF2 48/60	10%
06380300	BGP340 LED92--3S/740 PSR I DM DDF2 48/60	10%
06381000	BGP340 LED110--3S/740 PSR I DM DDF2 48/6	10%
06382700	BGP340 LED37--3S/740 PSR II DM DDF2 48/6	10%
06383400	BGP340 LED55--3S/740 PSR II DM DDF2 48/6	10%
06384100	BGP340 LED74--3S/740 PSR II DM DDF2 48/6	10%
06385800	BGP340 LED92--3S/740 PSR II DM DDF2 48/6	10%
06386500	BGP340 LED110--3S/740 PSR II DM DDF2 48/	10%
06388900	BGP340 LED55--3S/740 PSR I DM DDF3 48/60	10%
06391900	BGP340 LED110--3S/740 PSR I DM DDF3 48/6	10%
06394000	BGP340 LED74--3S/740 PSR II DM DDF3 48/6	10%
06395700	BGP340 LED92--3S/740 PSR II DM DDF3 48/6	10%
06396400	BGP340 LED110--3S/740 PSR II DM DDF3 48/	10%
06434300	BGP340 LED37--3S/740 PSU II DM MSP 48/60	-
06435000	BGP340 LED55--3S/740 PSU II DM MSP 48/60	-
06438100	BGP340 LED110--3S/740 PSU II DM MSP 48/6	-
06541800	BGP340 LED37--3S/740 PSR II DM LS-8 48/6	10%
06542500	BGP340 LED55--3S/740 PSR II DM LS-8 48/6	10%
06543200	BGP340 LED74--3S/740 PSR II DM LS-8 48/6	10%
06544900	BGP340 LED92--3S/740 PSR II DM LS-8 48/6	10%
06545600	BGP340 LED110--3S/740 PSR II DM LS-8 48/	10%

## Controls and Dimming

Order Code	Full Product Name	Dimmable	Order Code	Full Product Name	Dimmable
06342100	BGP340 LED37--3S/740 PSU I DM 48/60	No	06348300	BGP340 LED55--3S/740 PSU II DM 48/60	No
06343800	BGP340 LED55--3S/740 PSU I DM 48/60	No	06349000	BGP340 LED74--3S/740 PSU II DM 48/60	No
06344500	BGP340 LED74--3S/740 PSU I DM 48/60	No	06350600	BGP340 LED92--3S/740 PSU II DM 48/60	No
06345200	BGP340 LED92--3S/740 PSU I DM 48/60	No	06351300	BGP340 LED110--3S/740 PSU II DM 48/60	No
06346900	BGP340 LED110--3S/740 PSU I DM 48/60	No	06370400	BGP340 LED92--3S/740 PSR I DM DDF1 48/60	Yes
06347600	BGP340 LED37--3S/740 PSU II DM 48/60	No	06371100	BGP340 LED110--3S/740 PSR I DM DDF1 48/6	Yes

## Selenium LED

Order Code	Full Product Name	Dimmable
06372800	BGP340 LED37--3S/740 PSR II DM DDF1 48/6	Yes
06373500	BGP340 LED55--3S/740 PSR II DM DDF1 48/6	Yes
06374200	BGP340 LED74--3S/740 PSR II DM DDF1 48/6	Yes
06375900	BGP340 LED92--3S/740 PSR II DM DDF1 48/6	Yes
06376600	BGP340 LED110--3S/740 PSR II DM DDF1 48/	Yes
06377300	BGP340 LED37--3S/740 PSR I DM DDF2 48/60	Yes
06378000	BGP340 LED55--3S/740 PSR I DM DDF2 48/60	Yes
06379700	BGP340 LED74--3S/740 PSR I DM DDF2 48/60	Yes
06380300	BGP340 LED92--3S/740 PSR I DM DDF2 48/60	Yes
06381000	BGP340 LED110--3S/740 PSR I DM DDF2 48/6	Yes
06382700	BGP340 LED37--3S/740 PSR II DM DDF2 48/6	Yes
06383400	BGP340 LED55--3S/740 PSR II DM DDF2 48/6	Yes
06384100	BGP340 LED74--3S/740 PSR II DM DDF2 48/6	Yes
06385800	BGP340 LED92--3S/740 PSR II DM DDF2 48/6	Yes

Order Code	Full Product Name	Dimmable
06386500	BGP340 LED110--3S/740 PSR II DM DDF2 48/	Yes
06388900	BGP340 LED55--3S/740 PSR I DM DDF3 48/60	Yes
06391900	BGP340 LED110--3S/740 PSR I DM DDF3 48/6	Yes
06394000	BGP340 LED74--3S/740 PSR II DM DDF3 48/6	Yes
06395700	BGP340 LED92--3S/740 PSR II DM DDF3 48/6	Yes
06396400	BGP340 LED110--3S/740 PSR II DM DDF3 48/	Yes
06434300	BGP340 LED37--3S/740 PSU II DM MSP 48/60	No
06435000	BGP340 LED55--3S/740 PSU II DM MSP 48/60	No
06438100	BGP340 LED110--3S/740 PSU II DM MSP 48/6	No
06541800	BGP340 LED37--3S/740 PSR II DM LS-8 48/6	Yes
06542500	BGP340 LED55--3S/740 PSR II DM LS-8 48/6	Yes
06543200	BGP340 LED74--3S/740 PSR II DM LS-8 48/6	Yes
06544900	BGP340 LED92--3S/740 PSR II DM LS-8 48/6	Yes
06545600	BGP340 LED110--3S/740 PSR II DM LS-8 48/	Yes

### General Information

Order Code	Full Product Name	Coating	Lamp family code
06342100	BGP340 LED37--3S/740 PSU I DM 48/60	-	LED37
06343800	BGP340 LED55--3S/740 PSU I DM 48/60	-	LED55
06344500	BGP340 LED74--3S/740 PSU I DM 48/60	-	LED74
06345200	BGP340 LED92--3S/740 PSU I DM 48/60	-	LED92
06346900	BGP340 LED110--3S/740 PSU I DM 48/60	-	LED110
06347600	BGP340 LED37--3S/740 PSU II DM 48/60	-	LED37
06348300	BGP340 LED55--3S/740 PSU II DM 48/60	-	LED55
06349000	BGP340 LED74--3S/740 PSU II DM 48/60	-	LED74
06350600	BGP340 LED92--3S/740 PSU II DM 48/60	-	LED92
06351300	BGP340 LED110--3S/740 PSU II DM 48/60	-	LED110
06370400	BGP340 LED92--3S/740 PSR I DM DDF1 48/60	-	LED92
06371100	BGP340 LED110--3S/740 PSR I DM DDF1 48/6	-	LED110
06372800	BGP340 LED37--3S/740 PSR II DM DDF1 48/6	-	LED37
06373500	BGP340 LED55--3S/740 PSR II DM DDF1 48/6	-	LED55
06374200	BGP340 LED74--3S/740 PSR II DM DDF1 48/6	-	LED74
06375900	BGP340 LED92--3S/740 PSR II DM DDF1 48/6	-	LED92
06376600	BGP340 LED110--3S/740 PSR II DM DDF1 48/	-	LED110
06377300	BGP340 LED37--3S/740 PSR I DM DDF2 48/60	-	LED37
06378000	BGP340 LED55--3S/740 PSR I DM DDF2 48/60	-	LED55
06379700	BGP340 LED74--3S/740 PSR I DM DDF2 48/60	-	LED74
06380300	BGP340 LED92--3S/740 PSR I DM DDF2 48/60	-	LED92

Order Code	Full Product Name	Coating	Lamp family code
06381000	BGP340 LED110--3S/740 PSR I DM DDF2 48/6	-	LED110
06382700	BGP340 LED37--3S/740 PSR II DM DDF2 48/6	-	LED37
06383400	BGP340 LED55--3S/740 PSR II DM DDF2 48/6	-	LED55
06384100	BGP340 LED74--3S/740 PSR II DM DDF2 48/6	-	LED74
06385800	BGP340 LED92--3S/740 PSR II DM DDF2 48/6	-	LED92
06386500	BGP340 LED110--3S/740 PSR II DM DDF2 48/	-	LED110
06388900	BGP340 LED55--3S/740 PSR I DM DDF3 48/60	-	LED55
06391900	BGP340 LED110--3S/740 PSR I DM DDF3 48/6	-	LED110
06394000	BGP340 LED74--3S/740 PSR II DM DDF3 48/6	-	LED74
06395700	BGP340 LED92--3S/740 PSR II DM DDF3 48/6	-	LED92
06396400	BGP340 LED110--3S/740 PSR II DM DDF3 48/	-	LED110
06434300	BGP340 LED37--3S/740 PSU II DM MSP 48/60	Marine salt protected coating	LED37
06435000	BGP340 LED55--3S/740 PSU II DM MSP 48/60	Marine salt protected coating	LED55
06438100	BGP340 LED110--3S/740 PSU II DM MSP 48/6	Marine salt protected coating	LED110

## Selenium LED

Order Code	Full Product Name	Coating	Lamp family code
06541800	BGP340 LED37--3S/740 PSR II DM LS-8 48/6	-	LED37
06542500	BGP340 LED55--3S/740 PSR II DM LS-8 48/6	-	LED55
06543200	BGP340 LED74--3S/740 PSR II DM LS-8 48/6	-	LED74

Order Code	Full Product Name	Coating	Lamp family code
06544900	BGP340 LED92--3S/740 PSR II DM LS-8 48/6	-	LED92
06545600	BGP340 LED110--3S/740 PSR II DM LS-8 48/6	-	LED110

### Initial Performance (IEC Compliant)

Order Code	Full Product Name	Initial luminous flux
06342100	BGP340 LED37--3S/740 PSU I DM 48/60	3254 lm
06343800	BGP340 LED55--3S/740 PSU I DM 48/60	4792 lm
06344500	BGP340 LED74--3S/740 PSU I DM 48/60	6407 lm
06345200	BGP340 LED92--3S/740 PSU I DM 48/60	7906 lm
06346900	BGP340 LED110--3S/740 PSU I DM 48/60	9381 lm
06347600	BGP340 LED37--3S/740 PSU II DM 48/60	3254 lm
06348300	BGP340 LED55--3S/740 PSU II DM 48/60	4792 lm
06349000	BGP340 LED74--3S/740 PSU II DM 48/60	6407 lm
06350600	BGP340 LED92--3S/740 PSU II DM 48/60	7906 lm
06351300	BGP340 LED110--3S/740 PSU II DM 48/60	9381 lm
06370400	BGP340 LED92--3S/740 PSR I DM DDF1 48/60	7906 lm
06371100	BGP340 LED110--3S/740 PSR I DM DDF1 48/6	9381 lm
06372800	BGP340 LED37--3S/740 PSR II DM DDF1 48/6	3254 lm
06373500	BGP340 LED55--3S/740 PSR II DM DDF1 48/6	4792 lm
06374200	BGP340 LED74--3S/740 PSR II DM DDF1 48/6	6407 lm
06375900	BGP340 LED92--3S/740 PSR II DM DDF1 48/6	7906 lm
06376600	BGP340 LED110--3S/740 PSR II DM DDF1 48/6	9381 lm
06377300	BGP340 LED37--3S/740 PSR I DM DDF2 48/60	3254 lm
06378000	BGP340 LED55--3S/740 PSR I DM DDF2 48/60	4792 lm
06379700	BGP340 LED74--3S/740 PSR I DM DDF2 48/60	6407 lm

Order Code	Full Product Name	Initial luminous flux
06380300	BGP340 LED92--3S/740 PSR I DM DDF2 48/60	7906 lm
06381000	BGP340 LED110--3S/740 PSR I DM DDF2 48/6	9381 lm
06382700	BGP340 LED37--3S/740 PSR II DM DDF2 48/6	3254 lm
06383400	BGP340 LED55--3S/740 PSR II DM DDF2 48/6	4792 lm
06384100	BGP340 LED74--3S/740 PSR II DM DDF2 48/6	6407 lm
06385800	BGP340 LED92--3S/740 PSR II DM DDF2 48/6	7906 lm
06386500	BGP340 LED110--3S/740 PSR II DM DDF2 48/6	9381 lm
06388900	BGP340 LED55--3S/740 PSR I DM DDF3 48/60	4792 lm
06391900	BGP340 LED110--3S/740 PSR I DM DDF3 48/6	9381 lm
06394000	BGP340 LED74--3S/740 PSR II DM DDF3 48/6	6407 lm
06395700	BGP340 LED92--3S/740 PSR II DM DDF3 48/6	7906 lm
06396400	BGP340 LED110--3S/740 PSR II DM DDF3 48/6	9381 lm
06434300	BGP340 LED37--3S/740 PSU II DM MSP 48/60	3254 lm
06435000	BGP340 LED55--3S/740 PSU II DM MSP 48/60	4792 lm
06438100	BGP340 LED110--3S/740 PSU II DM MSP 48/6	9381 lm
06541800	BGP340 LED37--3S/740 PSR II DM LS-8 48/6	3254 lm
06542500	BGP340 LED55--3S/740 PSR II DM LS-8 48/6	4792 lm
06543200	BGP340 LED74--3S/740 PSR II DM LS-8 48/6	6407 lm
06544900	BGP340 LED92--3S/740 PSR II DM LS-8 48/6	7906 lm
06545600	BGP340 LED110--3S/740 PSR II DM LS-8 48/6	9381 lm

