



# Iridium gen3 – The connected intelligent ‘plug & play’ road luminaire

## Iridium gen3 LED Large

Iridium gen3 is the first truly intelligent luminaire designed for seamless connectivity. No hassle in commissioning – just install the luminaire and control it from a distance through CityTouch management software. Remote light management made easy! The new ‘plug & play’ concept has been designed to ensure safe and easy installation in just three steps: 1. Install the spigot, 2. Plug in the mains, 3. Tilt and close the luminaire. The luminaire’s high efficiency at system level ensures significant energy savings compared to existing conventional installations, offering a fast payback. Thanks to its wide choice of lumen packages, optics and color temperatures, Iridium gen3 fits most applications in residential areas. The luminaire’s neo-classical design guarantees a consistent look and feel for your surroundings.

### Benefits

- Seamless connection from luminaire to CityTouch software without commissioning
- ‘Plug & play’ installation in just three steps
- High efficiency ensuring fast payback and low TCO

# Iridium gen3 LED Large

## Features

- Seamless remote light management by means of CityTouch
- Auto-location and commissioning
- System efficacy of up to 127 lm/W
- Wide range of lumen packages between 7,200 and 15,500 lm
- Available in neutral white and warm white color temperature
- Choice of four optics: Distribution medium (DM), wide (DW), comfort (DC), road wet (DK)
- Separate spigot for safe and easy installation
- Lifetime of up to 100,000 hours at L80B10

## Application

- Residential areas: residential streets, cycle paths & footpaths, roundabouts, pedestrian crossings, parking areas
- City centers: side streets, pedestrian crossings, cycle paths & footpaths, parking areas, roundabouts
- Area and Transportation: industrial areas, parking areas, petrol stations, airports, harbors, public transport areas, waterways
- Sports: parking areas

## Specifications

Type	BGP383
Light source	Integral LED-module
Power	60 to 138 W depending on LED configuration
Luminous flux	7372 to 15553 lm
Luminaire efficacy	104 to 131 lm/W
Correlated Color	3000 K (warm white)
Temperature	4000 K (neutral white)
Color Rendering Index	80 (warm white) 70 (neutral white)
Lumen maintenance at median useful life* 100000 h	min L80
Control gear failure rate at median useful life 100000 h	10%
Performance Ambient Temperature Tq	+25 °C
Operating temperature range	-30 to +35 °C
Driver	Built-in (self ballasted LED-module)
Mains voltage	220-240 V / 50-60 Hz
Dimming	Dimmable versions available
Controls system input	1-10 V and DALI

Options	Dimming LumiStep 6, 8 hrs DynaDimmer Constant Light Output (CLO) SDU 1-10 V DALI RF regulation Mains dimming Nema socket Photocell: mini cell 35, 55, 70 Lux Fuse Cable: 6-16 m Surge protection
Optic	Distribution medium (DM), wide (DW), comfort (DC), road wet optic (DK)
Material	Housing: high pressure die-cast aluminum Cover: polycarbonate, flat
Color	Aluminum or grey Other RAL or AKZO colors available on request
Connection	Push-in connector with 3 poles
Maintenance	Possibility to open with screw to replace driver and LED module
Installation	Post top: 60 or 76 mm Side entry: 42 or 60 mm Recommended mounting height: 10 m Standard tilt angle post top: 0, 5 and 10° Adjustable tilt angle: 0, -5 and -10°

# Iridium gen3 LED Large

<b>SR compatibility</b>	For SR based luminaires only SR Certified components/sensors are to be used (see also: <a href="http://www.lighting.philips.co.uk/oem-emea/products/driving-connected-lighting?">http://www.lighting.philips.co.uk/oem-emea/products/driving-connected-lighting?</a> ). Functional compatibility of 2 (SR certified) components/sensors to be used in combination as well as override possibility of any lineswitch function used in a SR based luminaire, is to be
-------------------------	--

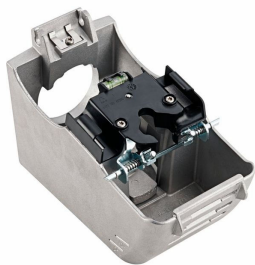
released by the master component/sensor supplier. For the use of NEMA 7pin socket on a SR based luminaire a full system verification is required. Not following these advises can/will cause risk of damage and non-compliance for which Signify cannot take any responsibility.

## Versions

Iridium gen3 Large BGP383 road-lighting luminaire



## Product details



OPDP\_BGP383i\_0003-Detail photo



OPDP\_BGP383i\_0007-Detail photo

## Iridium gen3 LED Large

### Product details

OPDP\_BGP383i\_0009-Detail  
photo

