



Celino – light beam

Celino LED BPS680 C

Celino is a complete luminaire range that reflects the market trend towards miniaturization and architectural integration, while delivering a significant advance in optical performance. Celino features Philips' aluminum micro optic with 3D lamellae, which ensures optimum visual comfort and efficiency in compliance with the latest office-lighting norm (EN 12464-1). Made of natural anodized aluminum, the housing of Celino is a mere 71 mm wide and has die-cast-aluminum end caps. The design allows multiple luminaires to be connected in a line arrangement. Celino is available as a full range – suspended, surface-mounted, free-standing, recessed and wall-mounted, with a choice of TL5, TL5 Eco or LED light sources – for maximum freedom in application.

Benefits

- Complete luminaire range that reflects the trend to miniaturization and architectural integration
- Excellent optical performance using optical covers for optimum visual comfort and efficiency

Features

- Inspiring: aesthetical and novel design with visually better ceiling integration
- Comfort: spacious and pleasant environment with comfortable lighting appearance
- Efficient: high efficacy achieved with optics innovation

Application

- Open plan office
- Meeting room
- Reception area
- Cell office
- Lounge

Specifications

Type	BPS680	Power	30 W (for LED24)
Light source	Non-replaceable LED module		52 W (for LED48)

Celino LED BPS680 C

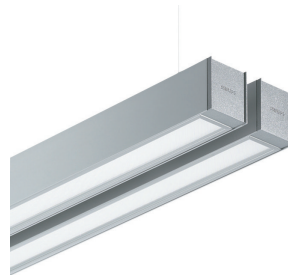
Luminous flux	1800-4200 lm (dependant on configuration)
Correlated Color	4000 K
Temperature	
Color Rendering Index	80
Maintenance of lumen output - L90	25,000 hours at 25°C
Maintenance of lumen output - L70	50,000 hours at 25°C
Operating temperature range	25°C
Driver	
	Built-in
	PSU: fixed output driver, PSD: dimmable driver
Mains voltage	220-240 V / 50-60 Hz
Dimming	DALI

Material	
	Housing: natural anodized aluminum
	End caps: die-cast aluminum
Color	
	Aluminum (ALU)
Optical cover	
	OLC micro-lens optic in polycarbonate cover (MLO-PC)
	Opal optic in polycarbonate cover (O-PC)
	Linear lens array optic in polycarbonate cover (LIN-PC)
Installation	
	Individual, suspended mounting with a set of two single steel-wire suspensions, with metal-like power cord, and ceiling caps
	Fast fine adjustment with clutch device
	Installation without removing light source and optical cover
Remarks	
	W7L120: indicating same size as Celino conventional TL5 1-lamp version
	W17L120: indicating same size as Celino conventional TL5 2-lamps version

Versions

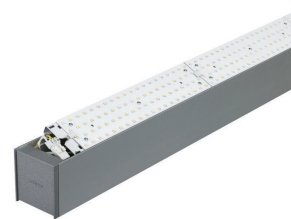


Celino BPS680 suspended luminaire with acrylate or polycarbonate micro-lens optic (MLO-PC), linear lens array or opal diffuser in polycarbonate cover (LIN-PC/O/PC)



Celino BPS680 suspended luminaire with acrylate or polycarbonate micro-lens optic (MLO-PC), linear lens array or opal diffuser in polycarbonate cover (LIN-PC/O/PC)

Product details



Celino LED BPS680 C

Product details



Application Conditions

Ambient temperature range	-20 to +40 °C
---------------------------	---------------

Approval and Application

Mech. impact protection code	IK03
Ingress protection code	IP20

Operating and Electrical

Input Voltage	220-240 V
---------------	-----------

General Information

Beam angle of light source	120 °
CE mark	-
Protection class IEC	Safety class I (I)
Driver included	Yes
ENEC mark	-
Light source replaceable	No

Initial Performance (IEC Compliant)

Init. Corr. Colour Temperature	4000 K
Init. Colour Rendering Index	>80

Application Conditions

Order Code	Full Product Name	Maximum dim level	Suitable for random switching
911401539801	BPS680 C LED24/840 PSD W7L120 MLO-PC	10%	No
911401540201	BPS680 C LED24/840 PSD W7L120 LIN-PC	10%	No
911401540401	BPS680 C LED24/840 PSU W7L120 LIN-PC	-	No
911401540501	BPS680 C LED24/840 PSU W7L120 O-PC	-	No
911401540601	BPS680 C LED24/840 PSU W7L120 MLO-PC	-	No
911401539901	BPS680 C LED48/840 PSD W17L120 MLO-PC	10%	No
911401540301	BPS680 C LED48/840 PSD W17L120 LIN-PC	10%	No
911401540801	BPS680 C LED48/840 PSU W17L120 MLO-PC	-	Yes (relates to presence/ movement detection and daylight harvesting)
911401540901	BPS680 C LED48/840 PSU W17L120 LIN-PC	-	No

Controls and Dimming

Order Code	Full Product Name	Dimmable
911401539801	BPS680 C LED24/840 PSD W7L120 MLO-PC	Yes
911401540201	BPS680 C LED24/840 PSD W7L120 LIN-PC	Yes
911401540401	BPS680 C LED24/840 PSU W7L120 LIN-PC	No
911401540501	BPS680 C LED24/840 PSU W7L120 O-PC	No
911401540601	BPS680 C LED24/840 PSU W7L120 MLO-PC	No

Order Code	Full Product Name	Dimmable
911401539901	BPS680 C LED48/840 PSD W17L120 MLO-PC	Yes
911401540301	BPS680 C LED48/840 PSD W17L120 LIN-PC	Yes
911401540801	BPS680 C LED48/840 PSU W17L120 MLO-PC	No
911401540901	BPS680 C LED48/840 PSU W17L120 LIN-PC	No

General Information (1/2)

Order Code	Full Product Name	Optical cover/lens type	Flammability mark	Glow-wire test	Lamp family code
911401539801	BPS680 C LED24/840 PSD W7L120 MLO-PC	MLO-PC	NO	650/30	LED24

Order Code	Full Product Name	Optical cover/lens type	Flammability mark	Glow-wire test	Lamp family code
911401540201	BPS680 C LED24/840 PSD W7L120 LIN-PC	LIN-PC	NO	650/30	LED24

Celino LED BPS680 C

Order Code	Full Product Name	Optical cover/lens type	Flammability mark	Glow-wire test	Lamp family code
911401540401	BPS680 C LED24/840 PSU W7L120 LIN-PC	LIN-PC	NO	650/30	LED24
911401540501	BPS680 C LED24/840 PSU W7L120 O-PC	O-PC	NO	650/30	LED24
911401540601	BPS680 C LED24/840 PSU W7L120 MLO-PC	MLO-PC	NO	650/30	LED24
911401539901	BPS680 C LED48/840 PSD W17L120 MLO-PC	MLO-PC	NO	650/30	LED48

Order Code	Full Product Name	Optical cover/lens type	Flammability mark	Glow-wire test	Lamp family code
911401540301	BPS680 C LED48/840 PSD W17L120 LIN-PC	LIN-PC	NO	650/30	LED48
911401540801	BPS680 C LED48/840 PSU W17L120 MLO-PC	MLO-PC	F	60030	LED48
911401540901	BPS680 C LED48/840 PSU W17L120 LIN-PC	LIN-PC	NO	650/30	LED48

General Information (2/2)

Order Code	Full Product Name	Number of gear units	Optic type
911401539801	BPS680 C LED24/840 PSD W7L120 MLO-PC	1 unit	WB
911401540201	BPS680 C LED24/840 PSD W7L120 LIN-PC	1 unit	WB
911401540401	BPS680 C LED24/840 PSU W7L120 LIN-PC	1 unit	WB
911401540501	BPS680 C LED24/840 PSU W7L120 O-PC	1 unit	WB
911401540601	BPS680 C LED24/840 PSU W7L120 MLO-PC	1 unit	WB
911401539901	BPS680 C LED48/840 PSD W17L120 MLO-PC	1 unit	WB

Order Code	Full Product Name	Number of gear units	Optic type
911401540301	BPS680 C LED48/840 PSD W17L120 LIN-PC	1 unit	WB
911401540801	BPS680 C LED48/840 PSU W17L120 MLO-PC	2 units	No
911401540901	BPS680 C LED48/840 PSU W17L120 LIN-PC	1 unit	WB

Initial Performance (IEC Compliant) (1/2)

Order Code	Full Product Name	Initial chromaticity	Initial luminaire efficacy	Initial luminous flux	Luminous flux tolerance
911401539801	BPS680 C LED24/840 PSD W7L120 MLO-PC	(0.38, 0.38)	67.000 lm/W	1800 lm	+/-7.5%
911401540201	BPS680 C LED24/840 PSD W7L120 LIN-PC	(0.38, 0.38)	83.000 lm/W	2300 lm	+/-7.5%
911401540401	BPS680 C LED24/840 PSU W7L120 LIN-PC	(0.38, 0.38)	83.000 lm/W	2300 lm	+/-7.5%
911401540501	BPS680 C LED24/840 PSU W7L120 O-PC	(0.38, 0.38)	71.000 lm/W	2100 lm	+/-7.5%
911401540601	BPS680 C LED24/840 PSU W7L120 MLO-PC	(0.38, 0.38)	67.000 lm/W	1800 lm	+/-7.5%

Order Code	Full Product Name	Initial chromaticity	Initial luminaire efficacy	Initial luminous flux	Luminous flux tolerance
911401539901	BPS680 C LED48/840 PSD W17L120 MLO-PC	(0.38, 0.38)	67.000 lm/W	1800 lm	+/-7.5%
911401540301	BPS680 C LED48/840 PSD W17L120 LIN-PC	(0.38, 0.38)	83.000 lm/W	2300 lm	+/-7.5%
911401540801	BPS680 C LED48/840 PSU W17L120 MLO-PC	(0.37, 0.37)	55.000 lm/W	3300 lm	+/-8%
911401540901	BPS680 C LED48/840 PSU W17L120 LIN-PC	(0.38, 0.38)	83.000 lm/W	2300 lm	+/-7.5%

Initial Performance (IEC Compliant) (2/2)

Order Code	Full Product Name	Initial input power
911401539801	BPS680 C LED24/840 PSD W7L120 MLO-PC	30 W
911401540201	BPS680 C LED24/840 PSD W7L120 LIN-PC	30 W

Order Code	Full Product Name	Initial input power
911401540401	BPS680 C LED24/840 PSU W7L120 LIN-PC	32 W
911401540501	BPS680 C LED24/840 PSU W7L120 O-PC	32 W

Celino LED BPS680 C

Order Code	Full Product Name	Initial input power
911401540601	BPS680 C LED24/840 PSU W7L120 MLO-PC	32 W
911401539901	BPS680 C LED48/840 PSD W17L120 MLO-PC	51 W
911401540301	BPS680 C LED48/840 PSD W17L120 LIN-PC	51 W

Order Code	Full Product Name	Initial input power
911401540801	BPS680 C LED48/840 PSU W17L120 MLO-PC	60 W
911401540901	BPS680 C LED48/840 PSU W17L120 LIN-PC	52 W

Mechanical and Housing

Order Code	Full Product Name	Colour	Geometry
911401539801	BPS680 C LED24/840 PSD W7L120 MLO-PC	Silver	W7L120
911401540201	BPS680 C LED24/840 PSD W7L120 LIN-PC	Silver	W7L120
911401540401	BPS680 C LED24/840 PSU W7L120 LIN-PC	Silver	W7L120
911401540501	BPS680 C LED24/840 PSU W7L120 O-PC	Silver	W7L120
911401540601	BPS680 C LED24/840 PSU W7L120 MLO-PC	Silver	W7L120

Order Code	Full Product Name	Colour	Geometry
911401539901	BPS680 C LED48/840 PSD W17L120 MLO-PC	Silver	W17L120
911401540301	BPS680 C LED48/840 PSD W17L120 LIN-PC	Silver	W17L120
911401540801	BPS680 C LED48/840 PSU W17L120 MLO-PC	Aluminium	W17L120
911401540901	BPS680 C LED48/840 PSU W17L120 LIN-PC	Silver	W17L120

