



ClearFlood – LED solution for Sports and Area lighting

ClearFlood

The Philips ClearFlood is a dedicated LED floodlight delivering economical white light solutions for recreational sports and area applications. Designed around state-of-the-art LEDs and high-efficiency optics, this very competitive solution offers energy savings compared to traditional HID solutions. ClearFlood is easy to install and perfect for replacing conventional light points as it uses the same electrical installation, columns and types of fixation.

Benefits

- Slim LED design giving unobtrusive profile and simple installation
- Constant Light Output option for added energy savings

Features

- Variable lumen packages in one body size
- Instant light, long lifetime, no maintenance
- High LED and optical efficiency
- 100% Philips components

Application

- Small-scale recreational sports facilities
- Industrial areas
- Parking areas
- Building facades
- Billboards

Specifications

ClearFlood

Type	BVP650
Light source	Integral LED-module
Power (+/-10%)	50-240 W depending on product
Luminous flux	6,000-27,000 lm
Luminaire efficacy	up to 108 lm/W
Correlated Colour	4000 K
Temperature	
Colour Rendering Index	75
Maintenance of lumen output - L80F10	50,000 hours
Operating temperature range	-30 to +40 °C
Driver	Built-in (self ballasted LED-module)
Mains voltage	220-240 V / 50-60 Hz

Inrush current	108 A / 140 µs
Options	Constant light output
Optic	Symmetrical or asymmetrical Road 1, Road 2, Road 3
Optical cover	Glass, flat
Material	Housing: die-cast aluminum Cover: glass
Colour	Grey aluminium (RAL9007)
Connection	Cable with 3 wires
Maintenance	From below by opening the housing with a single quick-release clip
Installation	Stirrup fixation Max adjustment from the horizontal: -170 to +170° Max vertical aiming: 0 to +360°

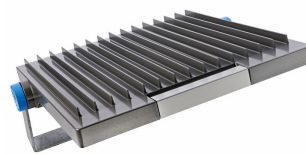
Versions



BVP650

Product details

ClearFlood-BVP650-DP.tif



ClearFlood

Product details



Approval and Application

Mech. impact protection code	IK09
Surge Protection (Common/Differential)	Luminaire surge protection level up to 6 kV differential mode and 8 kV common mode

Controls and Dimming

Dimmable	No
----------	----

General Information

CE mark	CE mark
Light source colour	740 neutral white
Optical cover/lens type	FG
Driver included	Yes
Flammability mark	F
Light source replaceable	Yes
Number of gear units	2 units
Product Family Code	BVP650

Initial Performance (IEC Compliant)

Init. Corr. Colour Temperature	4000 K
Init. Colour Rendering Index	≥70

Light Technical

Standard tilt angle side entry	0°
Standard tilt angle posttop	0°
Upward light output ratio	0

Mechanical and Housing

Colour	Grey
--------	------

General Information

Order Code	Full Product Name	Luminaire light beam spread	Lamp family code	Optic type
12888300	BVP650 LED420-4S/740 S ALU PSU	70° x 21°	LED420	Symmetrical
12889000	BVP650 LED420-4S/740 OFA52 ALU PSU	39° - 11° x 98°	LED420	Optiflux asymmetrical axis angle 52°
12890600	BVP650 LED420-4S/740 DX50 ALU PSU	17° - 5° x 132°	LED420	Distribution extra wide 50
12891300	BVP650 LED420-4S/740 DX51 ALU PSU	14° - 5° x 132°	LED420	Distribution extra wide 51
12892000	BVP650 LED420-4S/740 DX10 ALU PSU	20° - 4° x 150°	LED420	Distribution extra-wide 10
12893700	BVP650 LED420-4S/740 DW10 ALU PSU	52° - 7° x 151°	LED420	Distribution wide 10
12894400	BVP650 LED420-4S/740 DM10 ALU PSU	157° x 111°	LED420	Distribution medium 10
12895100	BVP650 LED440-4S/740 S ALU PSU	70° x 21°	LED440	Symmetrical
12896800	BVP650 LED440-4S/740 OFA52 ALU PSU	39° - 11° x 98°	LED440	Optiflux asymmetrical axis angle 52°
12897500	BVP650 LED440-4S/740 DX50 ALU PSU	17° - 5° x 132°	LED440	Distribution extra wide 50
12898200	BVP650 LED440-4S/740 DX51 ALU PSU	14° - 5° x 132°	LED440	Distribution extra wide 51
12899900	BVP650 LED440-4S/740 DX10 ALU PSU	20° - 4° x 150°	LED440	Distribution extra-wide 10
12900200	BVP650 LED440-4S/740 DW10 ALU PSU	52° - 7° x 151°	LED440	Distribution wide 10
12901900	BVP650 LED440-4S/740 DM10 ALU PSU	157° x 111°	LED440	Distribution medium 10
45110300	BVP650 LED360-4S/740 DX60 ALU PSU	8° - 26° x 82°	LED360	Distribution extra-wide 60
45111000	BVP650 LED380-4S/740 DX60 ALU PSU	8° - 26° x 82°	LED380	Distribution extra-wide 60
45112700	BVP650 LED400-4S/740 DX60 ALU PSU	8° - 26° x 82°	LED400	Distribution extra-wide 60
45113400	BVP650 LED420-4S/740 DX60 ALU PSU	8° - 26° x 82°	LED420	Distribution extra-wide 60
45114100	BVP650 LED440-4S/740 DX60 ALU PSU	8° - 26° x 82°	LED440	Distribution extra-wide 60

Initial Performance (IEC Compliant)

Order Code	Full Product Name	Initial luminous flux
12888300	BVP650 LED420-4S/740 S ALU PSU	36120 lm
12889000	BVP650 LED420-4S/740 OFA52 ALU PSU	35700 lm
12890600	BVP650 LED420-4S/740 DX50 ALU PSU	34440 lm
12891300	BVP650 LED420-4S/740 DX51 ALU PSU	21000 lm
12892000	BVP650 LED420-4S/740 DX10 ALU PSU	34020 lm
12893700	BVP650 LED420-4S/740 DW10 ALU PSU	35700 lm
12894400	BVP650 LED420-4S/740 DM10 ALU PSU	35700 lm

Order Code	Full Product Name	Initial luminous flux
12895100	BVP650 LED440-4S/740 S ALU PSU	37840 lm
12896800	BVP650 LED440-4S/740 OFA52 ALU PSU	37400 lm
12897500	BVP650 LED440-4S/740 DX50 ALU PSU	36080 lm
12898200	BVP650 LED440-4S/740 DX51 ALU PSU	22000 lm
12899900	BVP650 LED440-4S/740 DX10 ALU PSU	35640 lm
12900200	BVP650 LED440-4S/740 DW10 ALU PSU	37400 lm
12901900	BVP650 LED440-4S/740 DM10 ALU PSU	37400 lm

ClearFlood

Order Code	Full Product Name	Initial luminous flux
45110300	BVP650 LED360-4S/740 DX60 ALU PSU	32400 lm
45111000	BVP650 LED380-4S/740 DX60 ALU PSU	34200 lm
45112700	BVP650 LED400-4S/740 DX60 ALU PSU	36000 lm

Order Code	Full Product Name	Initial luminous flux
45113400	BVP650 LED420-4S/740 DX60 ALU PSU	37380 lm
45114100	BVP650 LED440-4S/740 DX60 ALU PSU	39160 lm

