



# Superior Color Performance in Metal Halide Technology

## MasterColor CDM-TD

The MasterColor CDM metal halide lamps deliver consistent white light and higher color rendering than any standard metal halide source for architectural lighting. Tubular double-ended TD style for enclosed luminaires are ideal for accent lighting in indoor applications.

### Benefits

- Energy-efficient alternative to incandescent/halogen.
- Improved lumen maintenance over standard metal halide.

### Features

- Lifetime color stability within +/- 200k.
- Exceptional color rendering.
- Features FadeBlock™—an integrated UV blocking medium for reduced fading of fabrics and paintings.
- Available in 70W TD6 and 150W TD7.

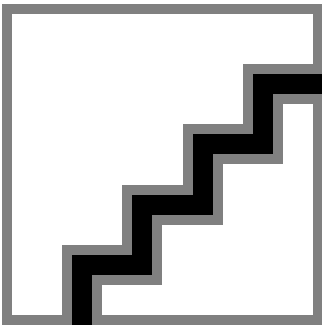
### Application

- Ideal for display and accent lighting in retail, architectural applications.

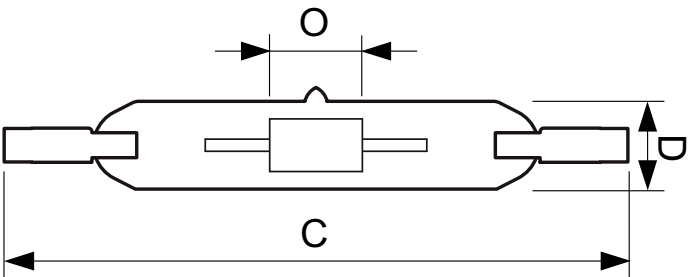
### Warnings and Safety

- R "WARNING: These lamps can cause serious skin burn and eye inflammation from short wave ultraviolet radiation if outer envelope of the lamp is broken or punctured. Do not use where people will remain for more than a few minutes unless adequate shielding or other safety precautions are used. Certain lamps that will automatically extinguish when the outer envelope is broken or punctured are commercially available." This lamp complies with FDA radiation performance standard 21 CFR subchapter J. (USA:21 CFR 1040.30 Canada: SOR/DORS/80-381)

Versions

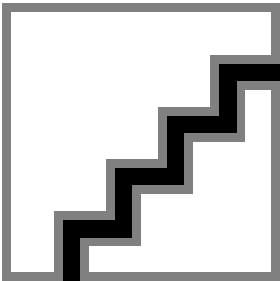


Dimensional drawing



Product	D (max)	D	O	C (max)
MASTERColour CDM-TD 150W/830	25 mm	0.875 in	10 mm	137.43 mm
RX7s 1CT				

Colour Rendering Diagrams



LDCR\_CDM-TD\_150W-Colour rendering diagram



