



# Superior Color Performance in Metal Halide Technology

## MasterColor CDM-TD

The MasterColor CDM metal halide lamps deliver consistent white light and higher color rendering than any standard metal halide source for architectural lighting. Tubular double-ended TD style for enclosed luminaires are ideal for accent lighting in indoor applications.

### Benefits

- Energy-efficient alternative to incandescent/halogen.
- Improved lumen maintenance over standard metal halide.

### Features

- Lifetime color stability within +/- 200k.
- Exceptional color rendering.
- Features FadeBlock™—an integrated UV blocking medium for reduced fading of fabrics and paintings.
- Available in 70W TD6 and 150W TD7.

### Application

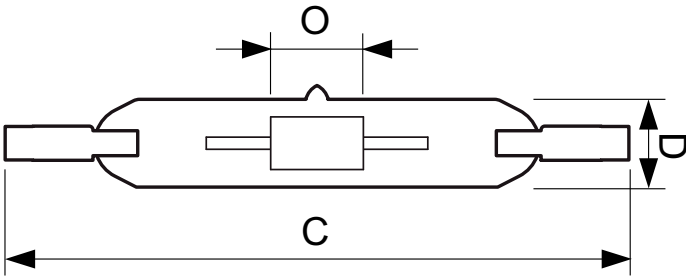
- Ideal for display and accent lighting in retail, architectural applications.

# MasterColor CDM-TD

## Versions



## Dimensional drawing



Product	D (max)	D	O	C (max)
MASTERColour CDM-TD 150W/942 RX7s 1CT	25 mm	0.875 in	10 mm	137.43 mm
MASTERColour CDM-TD 150W/830 RX7s 1CT	25 mm	0.875 in	10 mm	137.43 mm

# MasterColor CDM-TD

## Approval and Application

Energy Efficiency Label (EEL) A+

## Controls and Dimming

Dimmable no

## Operating and Electrical

Lamp Current (EM) (Nom) 1.8 A

Re-Ignition Time (Min) (Max) 15 min

## General Information

Cap-Base RX7S

Life To 10% Failures (Nom) 13000 h

Life To 20% Failures (Nom) 15000 h

Life To 50% Failures (Nom) 16000 h

Life To 5% Failures (Nom) 9000 h

Operating Position P45

## Luminaire Design Requirements

Bulb Temperature (Max) 650 °C

## Light Technical

Lumen Maintenance 2000 h (Min) 80 %

Lumen Maintenance 2000 h (Nom) 90 %

Lumen Maintenance 5000 h (Min) 75 %

Lumen Maintenance 5000 h (Nom) 85 %

## Mechanical and Housing

Bulb Finish Clear (CL)

Bulb Shape T25

## Approval and Application

Order Code	Full Product Name	Energy Consumption kWh/	Mercury (Hg)
		1000 h	Content (Nom)
928083605133	MASTERColour CDM-TD 150W/830 RX7s 1CT	160 kWh	10.23 mg
928084805133	MASTERColour CDM-TD 150W/942 RX7s 1CT	165 kWh	8.29 mg

## Operating and Electrical

Order Code	Full Product Name	Voltage	Voltage	Voltage	Power
		(Max)	(Min)	(Nom)	(Rated)
928083605133	MASTERColour CDM-TD 150W/830 RX7s 1CT	106 V	90 V	98 V	145.0 W

Order Code	Full Product Name	Voltage	Voltage	Voltage	Power
		(Max)	(Min)	(Nom)	(Rated)
928084805133	MASTERColour CDM-TD 150W/942 RX7s 1CT	110 V	96 V	103 V	150.0 W

## Light Technical (1/2)

Order Code	Full Product Name	Chromaticity		Chromaticity	
		Coordinate X (Nom)	Coordinate Y (Nom)	Colour Code	Colour Designation
928083605133	MASTERColour CDM-TD 150W/830 RX7s 1CT	0.437	0.399	830	Warm white (WW)

Order Code	Full Product Name	Chromaticity		Chromaticity	
		Coordinate X (Nom)	Coordinate Y (Nom)	Colour Code	Colour Designation
928084805133	MASTERColour CDM-TD 150W/942 RX7s 1CT	0.380	0.375	942	Cool White (CW)

## Light Technical (2/2)

# MasterColor CDM-TD

Order Code	Full Product Name	Colour					
		Correlated Colour Temperature (Nom)	Rendering Index (Nom)	Lumen Maintenance 10000 h (Nom)	Luminous Efficacy (rated) (Nom)	Luminous Flux (Nom)	Luminous Flux (Rated) (Nom)
928083605133	MASTERColour CDM-TD 150W/830 RX7s 1CT	3000 K	88	75 %	91 lm/W	13250 lm	13250 lm
928084805133	MASTERColour CDM-TD 150W/942 RX7s 1CT	4200 K	96	70 %	87 lm/W	13750 lm	13750 lm

## Color Rendering Diagrams

