



# Superior Color Performance in Metal Halide Technology

## MasterColor CDM-TD

The MasterColor CDM metal halide lamps deliver consistent white light and higher color rendering than any standard metal halide source for architectural lighting. Tubular double-ended TD style for enclosed luminaires are ideal for accent lighting in indoor applications.

### Benefits

- Energy-efficient alternative to incandescent/halogen.
- Improved lumen maintenance over standard metal halide.

### Features

- Lifetime color stability within +/- 200k.
- Exceptional color rendering.
- Features FadeBlock™—an integrated UV blocking medium for reduced fading of fabrics and paintings.
- Available in 70W TD6 and 150W TD7.

### Application

- Ideal for display and accent lighting in retail, architectural applications.

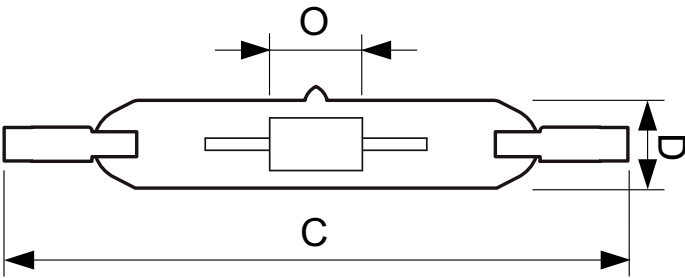
# MasterColor CDM-TD

## Versions



CDM-TD, 70W

## Dimensional drawing



Product	D (max)	D	O	C (max)
MasterColor CDM-TD 70W/830 RX7s T6 CL	22 mm	0.75 in	8 mm	119.63 mm

## Color Rendering Diagrams

