

Long-lasting, reliable solution

HID-Basic BHL MK4 for HPL/HPI

Impregnated electromagnetic copper/iron ballasts for HPL, HPI (Plus) and SON-H lamps

Benefits

- Long-lasting reliable solution protected from overheating; better for hot environments than its predecessors; extended warranty
- Minimal watt losses thanks to orthocyclic winding process
- Control gear can be installed remotely

Features

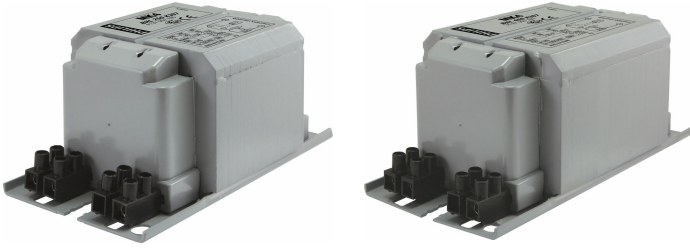
- Improved thermal features – much cooler ballast
- Ballasts designed for mercury lamps (HPL) without using an ignitor can also be used with HPI lamps with an ignitor
- Equipped with screw terminal blocks as standard; insert contacts available upon request
- Earthing-while-mounting facility
- Ballasts for alternative mains voltages/frequencies available upon request

Application

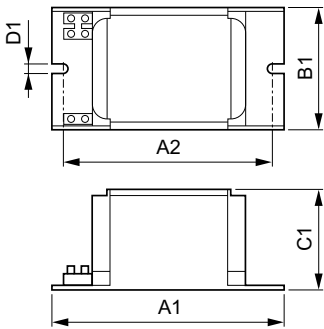
- Outdoor lighting

HID-Basic BHL MK4 for HPL/HPI

Versions



Dimensional drawing



Product	D1	C1	A1	A2	B1
BHL 400 K307-A2 230/240V 50Hz BC2-160	6.2 mm	65.0 mm	160.0 mm	139.0 mm	76.0 mm
BHL 250 K307-A2 230/240V 50Hz BC2-134	6.2 mm	65.0 mm	134.0 mm	113.0 mm	76.0 mm

Operating and Electrical

Input Frequency	50 Hz
Input Voltage	230 V (default) or 240 V

General Information

Number Of Lamps	1 piece/unit
Lamp Type	HPL/HPI

System characteristics

Order Code	Full Product Name	Rated Ballast-Lamp Power
88701300	BHL 250 K307 230/240V 50Hz BC2-134	250 W

Order Code	Full Product Name	Rated Ballast-Lamp Power
88703700	BHL 400 K307 230/240V 50Hz BC2-160	400 W

HID-Basic BHL MK4 for HPL/HPI

