

## Product Description

### HID-Basic BSN/BMH semi-parallel for SON/CDO/CDM/MH/HPI

Impregnated electromagnetic copper/iron ballasts for use with an external semi parallel ignitor for CDM, CDO, MH, HPI (Plus) and SON lamps

#### Benefits

- Long-lasting reliable solution protected from overheating
- Minimal watt losses thanks to orthocyclic winding process
- Control gear can be installed remotely

#### Features

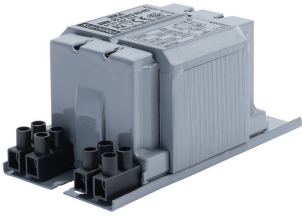
- All ballasts are equipped with ThermoSwitch for protection against end-of-lamp-life phenomena
- Ballast can also be used in combination with series (superimposed) ignitor
- Equipped with screw terminal blocks as standard; insert contacts available upon request
- Earthing-while-mounting facility
- Ballasts for alternative mains voltages/frequencies available upon request

#### Application

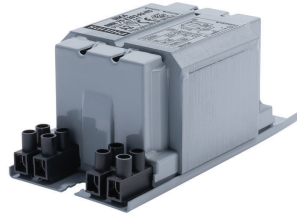
- Ideal for the following applications:
- Recreational sports lighting, outdoor and indoor
- Road and residential lighting
- Floodlighting of buildings and monuments
- Area lighting, e.g. harbors, building sites
- Canopy lighting, e.g. petrol stations
- Horticulture
- Climatic suitability: restricted to built-in situations where relative humidity is limited

# HID-Basic BSN/BMH semi-parallel for SON/CDO/CDM/MH/HPI

## Versions

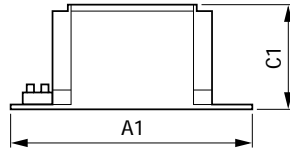
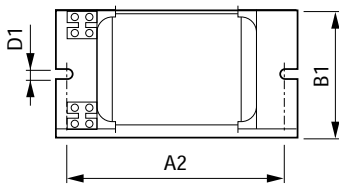


BMH 35 K302-A2-ITS 230V 50Hz



BMH 70 K302-A2-ITS 230V 50Hz

## Dimensional drawing



Product	A1	A2	B1	C1	D1
BMH 35 K302-A2-ITS 230V 50Hz	118 mm	94 mm	61 mm	52 mm	6.2 mm
BMH 70 K302-A2-ITS 230V 50Hz	118 mm	94 mm	61 mm	52 mm	6.2 mm

### Operating and Electrical

Input Frequency	50 Hz
Input Voltage	230 V

### General Information

Number Of Lamps	1 piece/unit
Lamp Type	MH

## System characteristics

Order Code	Full Product Name	Rated Ballast-Lamp Power
74068200	BMH 35 K302-A2-ITS 230V 50Hz	35 W

Order Code	Full Product Name	Rated Ballast-Lamp Power
74074300	BMH 70 K302-A2-ITS 230V 50Hz	70 W

## HID-Basic BSN/BMH semi-parallel for SON/CDO/CDM/MH/HPI

