



# Beautiful sparkle, reliable life

## MASTERColour CDM-TD

Range of double-ended, compact, high-efficiency, discharge lamps with a stable color over lifetime and a crisp, sparkling light

### Benefits

- Stable color impression over lifetime
- High lamp efficacy results in low operating costs and low heat generation. Provides better operating costs and improved light quality versus standard quartz metal halide (MHN-TD)
- Long lamp life compared with incandescent, halogen and quartz metal halide (MHN-TD) lamps
- Relatively low heat output enhances comfort for shoppers and staff
- All types are UV-Block for reduced fading risks

### Features

- Crisp white light
- Superior color quality
- Retrofit in double-ended luminaires for quartz metal halide lamps (MHN-TD), thereby allowing to reduce operating costs and improve color quality
- Burning position horizontal +/-45°

### Application

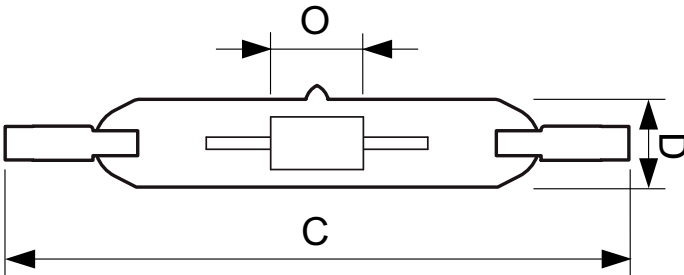
- Shops and shop windows, offices and public buildings
- Decorative outdoor: floodlighting of facades, statues and monuments

# MASTERColour CDM-TD

## Versions



## Dimensional drawing



Product	D (max)	D	O	C (max)
MASTERColour CDM-TD 150W/942 RX7s 1CT	25 mm	0.875 in	10 mm	137.43 mm
MASTERColour CDM-TD 70W/942 RX7s 1CT/12	22 mm	0.75 in	7 mm	119.63 mm
MASTERColour CDM-TD 150W/830 RX7s 1CT	25 mm	0.875 in	10 mm	137.43 mm
MASTERColour CDM-TD 70W/830 RX7s 1CT/12	22 mm	0.75 in	8 mm	119.63 mm

### Controls and Dimming

Dimmable No

### Operating and Electrical

Re-ignition Time (Min) (Max) 15 min

### General Information

Cap-Base RX7S

Life To 10% Failures (Nom) 13000 h

Life To 20% Failures (Nom) 15000 h

Life To 50% Failures (Nom) 16000 h

Life To 5% Failures (Nom) 9000 h

Operating Position P45

### Mechanical and Housing

Bulb Finish Clear (CL)

## Approval and Application

Order Code	Full Product Name	Energy Consumption kWh/1000 h	Energy	
			Efficiency Label (EEL)	Mercury (Hg) Content (Nom)
19782515	MASTERColour CDM-TD 70W/830 RX7S 1CT/12	78 kWh	A	3.4 mg
20002015	MASTERColour CDM-TD 70W/942 RX7S 1CT/12	78 kWh	A	4.8 mg
19784915	MASTERColour CDM-TD 150W/830 RX7s 1CT	160 kWh	A+	10.23 mg
20025915	MASTERColour CDM-TD 150W/942 RX7s 1CT	165 kWh	A+	8.29 mg

## Operating and Electrical (1/2)

# MASTERCcolour CDM-TD

Order Code	Full Product Name	Lamp	Voltage (Max)	Voltage (Min)	Voltage (Nom)
		Current (EM) (Nom)			
19782515	MASTERCcolour CDM-TD 70W/830 RX7S 1CT/12	0.95 A	102 V	86 V	94 V
20002015	MASTERCcolour CDM-TD 70W/942 RX7S 1CT/12	0.98 A	98 V	82 V	90 V

Order Code	Full Product Name	Lamp	Voltage (Max)	Voltage (Min)	Voltage (Nom)
		Current (EM) (Nom)			
19784915	MASTERCcolour CDM-TD 150W/830 RX7s 1CT	1.8 A	106 V	90 V	98 V
20025915	MASTERCcolour CDM-TD 150W/942 RX7s 1CT	1.8 A	110 V	96 V	103 V

## Operating and Electrical (2/2)

Order Code	Full Product Name	Power (Rated) (Nom)
19782515	MASTERCcolour CDM-TD 70W/830 RX7S 1CT/12	71.0 W
20002015	MASTERCcolour CDM-TD 70W/942 RX7S 1CT/12	71.0 W

Order Code	Full Product Name	Power (Rated) (Nom)
19784915	MASTERCcolour CDM-TD 150W/830 RX7s 1CT	145.0 W
20025915	MASTERCcolour CDM-TD 150W/942 RX7s 1CT	150.0 W

## Luminaire Design Requirements

Order Code	Full Product Name	Bulb Temperature (Max)
19782515	MASTERCcolour CDM-TD 70W/830 RX7S 1CT/12	500 °C
20002015	MASTERCcolour CDM-TD 70W/942 RX7S 1CT/12	500 °C

Order Code	Full Product Name	Bulb Temperature (Max)
19784915	MASTERCcolour CDM-TD 150W/830 RX7s 1CT	650 °C
20025915	MASTERCcolour CDM-TD 150W/942 RX7s 1CT	650 °C

## Light Technical (1/3)

Order Code	Full Product Name	Chromaticity	Chromaticity	Colour Code	Colour Designation
		Coordinate X (Nom)	Coordinate Y (Nom)		
19782515	MASTERCcolour CDM-TD 70W/830 RX7S 1CT/12	0.443	0.401	830	Warm White (WW)
20002015	MASTERCcolour CDM-TD 70W/942 RX7S 1CT/12	0.383	0.370	942	Cool White (CW)

Order Code	Full Product Name	Chromaticity	Chromaticity	Colour Code	Colour Designation
		Coordinate X (Nom)	Coordinate Y (Nom)		
19784915	MASTERCcolour CDM-TD 150W/830 RX7s 1CT	0.437	0.399	830	Warm White (WW)
20025915	MASTERCcolour CDM-TD 150W/942 RX7s 1CT	0.380	0.375	942	Cool White (CW)

## Light Technical (2/3)

Order Code	Full Product Name	Correlated	Colour Rendering Index (Min)	Colour Rendering Index (Nom)	Lumen Maintenance 10000 h (Nom)	Lumen Maintenance 2000 h (Min)	Lumen Maintenance 2000 h (Nom)	Lumen Maintenance 5000 h (Min)	Lumen Maintenance 5000 h (Nom)	Luminous Efficacy (rated) (Nom)
		Colour Temperature (Nom)								
19782515	MASTERCcolour CDM-TD 70W/830 RX7S 1CT/12	3000 K	77	80	70 %	80 %	85 %	70 %	80 %	85 lm/W
20002015	MASTERCcolour CDM-TD 70W/942 RX7S 1CT/12	4200 K	-	92	60 %	70 %	85 %	60 %	70 %	80 lm/W
19784915	MASTERCcolour CDM-TD 150W/830 RX7s 1CT	3000 K	-	88	75 %	80 %	90 %	75 %	85 %	91 lm/W
20025915	MASTERCcolour CDM-TD 150W/942 RX7s 1CT	4200 K	-	96	70 %	80 %	90 %	75 %	85 %	87 lm/W

# MASTERCLOUR CDM-TD

## Light Technical (3/3)

Order Code	Full Product Name	Luminous Flux (Nom)	Luminous Flux (Rated) (Nom)
19782515	MASTERCLOUR CDM-TD 70W/830 RX7S 1CT/12	6000 lm	6000 lm
20002015	MASTERCLOUR CDM-TD 70W/942 RX7S 1CT/12	5600 lm	5600 lm

Order Code	Full Product Name	Luminous Flux (Nom)	Luminous Flux (Rated) (Nom)
19784915	MASTERCLOUR CDM-TD 150W/830 RX7s 1CT	13250 lm	13250 lm
20025915	MASTERCLOUR CDM-TD 150W/942 RX7s 1CT	13750 lm	13750 lm

## Mechanical and Housing

Order Code	Full Product Name	Bulb Shape
19782515	MASTERCLOUR CDM-TD 70W/830 RX7S 1CT/12	T22
20002015	MASTERCLOUR CDM-TD 70W/942 RX7S 1CT/12	T22

Order Code	Full Product Name	Bulb Shape
19784915	MASTERCLOUR CDM-TD 150W/830 RX7s 1CT	T25
20025915	MASTERCLOUR CDM-TD 150W/942 RX7s 1CT	T25

## Colour Rendering Diagrams

