



# Beautiful sparkle, reliable life

## MASTERColour CDM-TD

Range of double-ended, compact, high-efficiency, discharge lamps with a stable colour over lifetime and a crisp, sparkling light

### Benefits

- Stable colour impression over lifetime
- High lamp efficacy results in low operating costs and low heat generation. Provides better operating costs and improved light quality versus standard quartz metal halide (MHN/W-TD)
- Long lamp life compared with incandescent, halogen and quartz metal halide (MHN/W-TD) lamps
- Relatively low heat output enhances comfort for shoppers and staff
- All types are UV-Block for reduced fading risks

### Features

- Warm or cool white colour impression
- Colour rendering good to excellent
- Retrofit in double-ended luminaires for quartz metal halide lamps (MHN/W-TD), thereby allowing to reduce operating costs and improve colour quality
- Burning position horizontal  $\pm 45^\circ$

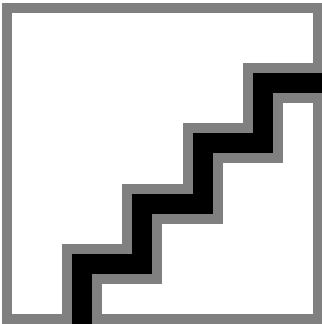
### Application

- Shops and shop windows, offices and public buildings
- Decorative outdoor: floodlighting of facades, statues and monuments

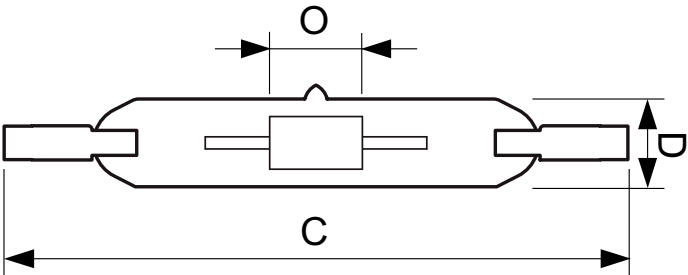
Warnings and Safety

- Use only in totally enclosed luminaire, even during testing (IEC61167, IEC 62035, IEC60598)
- The luminaire must be able to contain hot lamp parts if the lamp ruptures
- Lamps may use electronic or electromagnetic control gear
- Control gear must include end-of-life protection (IEC61167, IEC 62035)
- A lamp breaking is extremely unlikely to have any impact on your health. If a lamp breaks, ventilate the room for 30 minutes and remove the parts, preferably with gloves. Put them in a sealed plastic bag and take it to your local waste facilities for recycling. Do not use a vacuum cleaner.

Versions

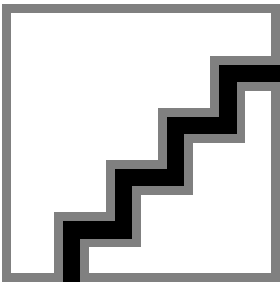


Dimensional drawing



| Product                      | D (max) | D        | O     | C (max)   |
|------------------------------|---------|----------|-------|-----------|
| MASTERColour CDM-TD 150W/830 | 25 mm   | 0.875 in | 10 mm | 137.43 mm |
| RX7s 1CT                     |         |          |       |           |

Colour Rendering Diagrams



LDCR\_CDM-TD\_150W-Colour rendering diagram

## MASTERColour CDM-TD

