

Product Description

Gear for SDW-T lamps

CSLS electronic control unit with impregnated (HID "BASIC") or encapsulated (HID "Heavy Duty") electromagnetic ballasts

Benefits

- Electronic control unit ensures reliable starting and stabilizes lamp power for optimum performance (minimum colour deviation)
- Simple installation and cabling

Features

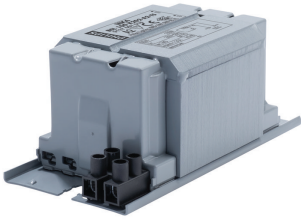
- Ballasts and electronic control units equipped with screw terminal blocks; other contact possibilities for
- Earthing-while-mounting facility (HID 'BASIC' ballasts), separate earth terminal (HID 'Heavy Duty')

Application

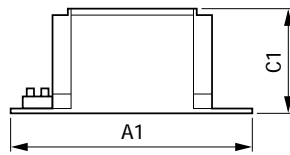
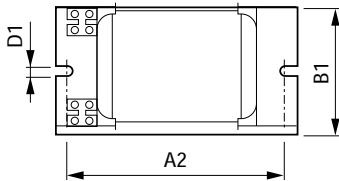
- Similar to those of the related lamps
- Climatic suitability:
- CSLS + HID "BASIC": restricted to built-in situations under normal conditions
- CSLS + HID "Heavy Duty": use in luminaires under humid conditions (not drip-proof)

Gear for SDW-T lamps

Versions



Dimensional drawing



Product	A1	A2	B1	C1	D1
BSL 100 K202-A2-TS 230V 50Hz	123 mm	98 mm	61 mm	52 mm	6.2 mm

