



HID-DynaVision LumiStep Xtreme for CPO - Integrated one- step dimming for easy cost savings

DynaVision LumiStep Xtreme for CPO

Highly reliable electronic drivers for CPO lamps; designed to save energy via integrated one-step dimming and to reduce maintenance costs thanks to 80,000-hour lifetime and integrated lightning protection

Benefits

- Together with the CPO lamp the driver creates the most efficient white-light system in the industry in its power range
- Up to 25% energy saving due to the integrated one-step dimming and very high driver efficiency (92%)
- Minimizes maintenance cost due to the Xtreme lifetime of 80,000 hours and integrated lightning protection

Features

- Integrated step dimming function from 100% down to 50% light (60% power) within three pre-programmed cycles - 6, 8 and 10 hours
- Xtreme long lifetime of 80,000 hours with minimum 90% survival at $T_c = 80^\circ\text{C}$
- Xtreme lightning protection 10 kV/5 kA
- Xtreme protection against humidity and vibration
- Accurate lamp power stabilization of 95-97% over wide mains-voltage range of 180-300 V

DynaVision LumiStep Xtreme for CPO

Application

- Residential lighting
- City beautification
- Road lighting
- Highway

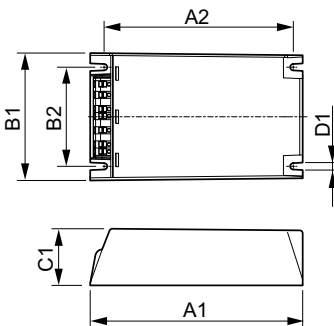
Versions



HID-DV Xt LS-6, LS-8 60 CPO Q

HID-DV Xt LS-6, LS-8 90 CPO Q

Dimensional drawing



Product	D1	C1	A1	A2	B1	B2
HID-DV LS8 Xt 90 CPO Q 208-277V	4.5 mm	40.0 mm	150.0 mm	133.6 mm	90.0 mm	70.0 mm
HID-DV LS8 Xt 60 CPO Q 208-277V	4.5 mm	40.0 mm	150.0 mm	133.6 mm	90.0 mm	70.0 mm

Controls and Dimming	
Regulating Level	50%-100%
Operating and Electrical	
Input Frequency	50 to 60 Hz
Input Voltage	208-240-277 V
General Information	
Number Of Lamps	1 piece/unit
Lamp Type	CPO
Mechanical and Housing	
Housing	Q

General Information

DynaVision LumiStep Xtreme for CPO

		Number Of Products On MCB (16A
Order Code	Full Product Name	Type B) (Nom)
913700691366	HID-DV LS8 Xt 60 CPO Q 208-277V	11

		Number Of Products On MCB (16A
Order Code	Full Product Name	Type B) (Nom)
913700691466	HID-DV LS8 Xt 90 CPO Q 208-277V	5

System characteristics

		Lamp Power On	Rated Ballast-Lamp
Order Code	Full Product Name	CPO	Power
913700691366	HID-DV LS8 Xt 60 CPO Q 208-277V	60 W	60 W

		Lamp Power On	Rated Ballast-Lamp
Order Code	Full Product Name	CPO	Power
913700691466	HID-DV LS8 Xt 90 CPO Q 208-277V	90 W	90 W

