

# Long-lasting, reliable solution

## HID-HeavyDuty BSX for SOX

Encapsulated electromagnetic copper/iron ballasts for SOX and SOX-E lamps

### Benefits

- Excellent resistance to chemical impact, humid conditions and environmental stress crack
- Long-lasting reliable solution – outstanding product lifetime of 15 years average
- Minimal watt losses thanks to orthocyclic winding process
- Control gear can be installed remotely

### Features

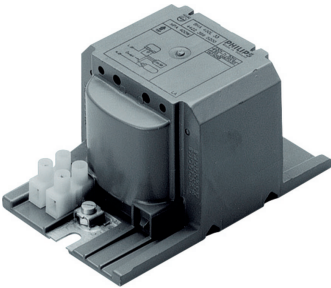
- Encapsulated with thermoplastic polyester resin, reinforced with glass fiber
- Equipped with screw terminal blocks as standard; insert contacts available upon request
- Ballasts for alternative mains voltages/frequencies available upon request
- Separate earth terminal (HID 'Heavy Duty')

### Application

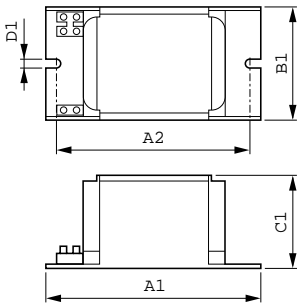
- Outdoor lighting

# HID-HeavyDuty BSX for SOX

## Versions



## Dimensional drawing



Product
BSX 90 L32 240V 50Hz HD1-118

