



Long-lasting, reliable solution

HID-HighPower for SON/MH/HPL/HPI

Encapsulated ballasts for use with SON (T) (Plus), HPL, HPI and MH lamps with rated wattages of 1000 W and above

Benefits

- Protected from overheating – outstanding product lifetime of 15 years average
- Minimal watt losses thanks to orthocyclic winding process
- Ideal for pole mounting

Features

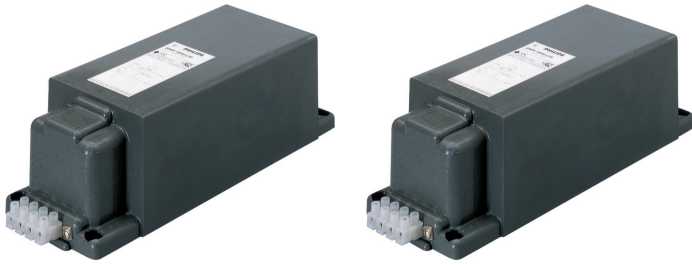
- Excellent resistance to chemical impact, humid conditions and environmental stress crack
- Class I rated (i.e. with earthing facility)
- Equipped with screw terminal blocks as standard
- Separate earth terminal (HID 'Heavy Duty')
- Ballasts for alternative mains voltages/frequencies available upon request

Application

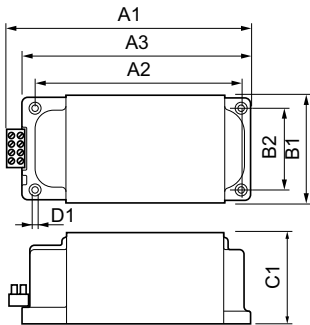
- Outdoor lighting (most popular application areas: sports and area lighting)

HID-HighPower for SON/MH/HPL/HPI

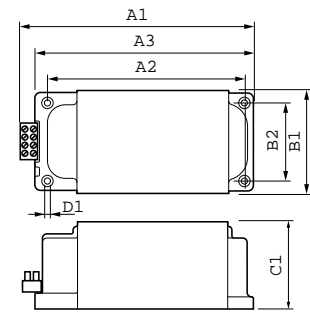
Versions



Dimensional drawing



Product	D1	C1	A1	A2	A3	B1	B2
BHD 2000 L76-A2 380/400/415V 50Hz HP-317	6.5	102.0	317.0	282.0	306.0	117.0	88.0



Product	D1	C1	A1	A2	A3	B1	B2
BHL 1000 L02- A2 220V 50Hz HP-207	6.5	102.0	207.0	172.0	196.0	117.0	88.0

Operating and Electrical

Input Frequency 50 Hz

General Information

Number Of Lamps 1 piece/unit

Operating and Electrical

Order Code	Full Product Name	Input Voltage (Multi-Tab)	Input Voltage
913700218403	BHL 1000 L02-A2 220V 50Hz HP-207	220	220 V

Order Code	Full Product Name	Input Voltage (Multi-Tab)	Input Voltage
913700232103	BHD 2000 L76-A2 380/400/415V 50Hz HP-317	380/400/415	380 to 415 V

HID-HighPower for SON/MH/HPL/HPI

General Information

Order Code	Full Product Name	Lamp Type	Order Code	Full Product Name	Lamp Type
913700218403	BHL 1000 L02-A2 220V 50Hz HP-207	HPI	913700232103	BHD 2000 L76-A2 380/400/415V 50Hz HP-317	MH

System characteristics

Order Code	Full Product Name	Rated Ballast-Lamp Power	Order Code	Full Product Name	Rated Ballast-Lamp Power
913700218403	BHL 1000 L02-A2 220V 50Hz HP-207	1000 W	913700232103	BHD 2000 L76-A2 380/400/415V 50Hz HP-317	2000 W

