



PrimaVision Power (100W & 150W) for CDM – High power packed in a small size

PrimaVision Power for CDM

PrimaVision Power gear is designed for optimal performance of 100 and 150 W CDM lamps – ideal where high-intensity light is key.

Benefits

- Optimal lamp performance thanks to minimal lamp power tolerance
- Lamp life increased by up to 30% for CDM lamps
- Eliminates all visible lamp flicker

Features

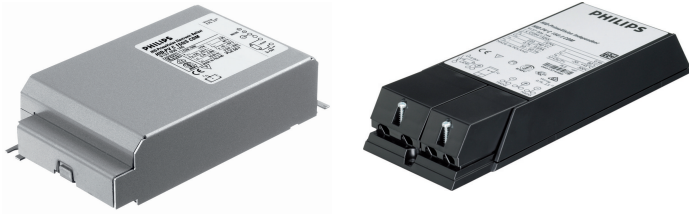
- Loop Through feature (in independent version)
- Low gear energy losses
- Lamp end-of-life detection
- High Tambient and Tcase temperatures
- Long lifetime of 40,000 hours

Application

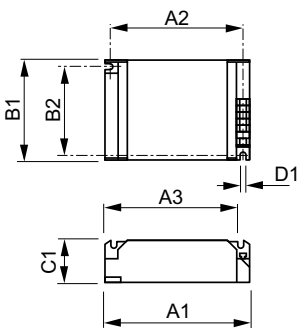
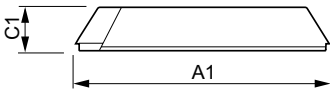
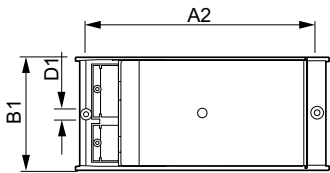
- 100 and 150 W: high-bay area, accent and decorative lighting for shops, public spaces, lobbies and offices
- Suitable for indoor use only

PrimaVision Power for CDM

Versions



Dimensional drawing



| Product | D1 | C1 | A1 | A2 | B1 |
|---|--------|---------|----------|----------|---------|
| HID-PV C 150 /I CDM 220-240V 50/60Hz | 4.8 mm | 34.2 mm | 223.9 mm | 206.0 mm | 82.7 mm |

| Product | D1 | C1 | A1 | A2 | B1 | B2 |
|---|--------|---------|----------|----------|---------|---------|
| HID-PV C 150 /S CDM 220-240V 50/60Hz | 4.8 mm | 32.0 mm | 135.0 mm | 123.5 mm | 75.0 mm | 63.5 mm |

Operating and Electrical

| | |
|-----------------|--------------|
| Input Frequency | 50 to 60 Hz |
| Input Voltage | 220 to 240 V |

General Information

| | |
|--|--------------|
| Number Of Products On MCB (16A Type B) (Nom) | 6 |
| Number Of Lamps | 1 piece/unit |
| Lamp Type | CDM |

System characteristics

| | |
|--------------------------|-------|
| Rated Ballast-Lamp Power | 150 W |
|--------------------------|-------|

PrimaVision Power for CDM

Mechanical and Housing

| Order Code | Full Product Name | Housing | Order Code | Full Product Name | Housing |
|------------|--------------------------------------|---------|------------|--------------------------------------|---------|
| 91052330 | HID-PV C 150 /S CDM 220-240V 50/60Hz | /S | 91287930 | HID-PV C 150 /I CDM 220-240V 50/60Hz | /I |

