



Environmentally Responsible Lamps

High Output T12

Philips T12 fluorescent lamps provide high performance in a wide range of sizes, shapes, and types.

Benefits

- Sustainable Lighting Solution -Less mercury and fewer lamps in landfills, combined with energy efficiency, reduces the impact on the environment.
- 12 month warranty period.
- TCLP compliant*
- * Fluorescent lamps that are TCLP compliant reduce the amount of pollutants released into the environment.

Features

- ALTO Lamp Technology.
- High light output.
- Available in 35,40,50,55,60,75,80,85,and 100 watts,in daylight, cool white, spec35, and ultralume colors.

Application

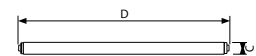
- Ideal for use in high bay applications such as warehouses, distribution centers and factories.

High Output T12

Versions



Dimensional drawing



T12 Revised Double Contact

Product
F48T12/CW/HO ALTO 15PK
TL F96T12/CW/HO-O ALTO 110W FLUOR. LAMP
F48T12/D/HO ALTO 15PK

Approval and Application	
Energy Saving Product	Not Applicable
General Information	
Cap-Base	R17D
Life 3-Hr Start [Hrs]	12000 h
Mechanical and Housing	
Bulb Shape	T-12 (T12)

Approval and Application

Order Code	Full Product Name	Mercury (Hg) Content (Nom)
		3.5 mg
		3.5 mg

Order Code	Full Product Name	Mercury (Hg) Content (Nom)
		6.8 mg

Operating and Electrical

Order Code	Full Product Name	Power (Rated) (Nom)
		60 W
		60 W

Order Code	Full Product Name	Power (Rated) (Nom)
		110 W

Light Technical

High Output T12

Order Code	Full Product		Colour Rendering Index				Design Mean Lumens	Luminous Flux (Nom)
			Colour Code	Colour Designation	Correlated Colour Temperature (Nom)	(Nom)		
			33	Cool White (CW)	4100 K	62	3500 lm	4050 lm
			54	Daylight	6500 K	79	3000 lm	3400 lm
			33	Cool White (CW)	4100 K	62	7650 lm	8800 lm

