



Wireless lighting control for a very pleasant workplace

SmartBalance Suspended, SpaceWise

With Philips SpaceWise, customers can enjoy the very real benefits of controls – e.g. energy savings, visual comfort and personal control – without having to create a wired infrastructure.

Benefits

- The easiest way to enjoy visual comfort and energy savings, without any exposed data cables
- Easy to commission via remote control
- Freedom and flexibility in working spaces with connected luminaires

Features

- Luminaires can be connected with SmartBalance suspended luminaires
- Luminaires have a wireless receiver, or are connected to a wireless receiver as slave luminaires
- Using a remote control, luminaires can be easily connected in a network
- Within the network, zones can be created where all luminaires in a zone behave in the same way
- All luminaires in the room/open-plan space can be linked in a network
- The wireless network can be connected to the Building Management System

Application

- Office/Connected lighting

Specifications

SmartBalance Suspended, SpaceWise

Type	SP480P (direct lighting version)
	SP482P (direct/indirect lighting version)
Light source	Non-replaceable LED module
Power (+/-10%)	SP480P: 33.5 W (4,000 K/ACC-MLO)
	SP482P: 37 W (4,000 K/ACC-MLO)
Luminous flux	3,500 or 4,000 lm
Correlated Colour	4,000 K
Temperature	
Colour Rendering Index	>80
Lumen maintenance at median useful life*	L85
50,000 h	
Control gear failure rate at median useful life	5%
50,000 h	
Performance Ambient Temperature Tq	+25 °C
Operating temperature range	+10 to +35 °C

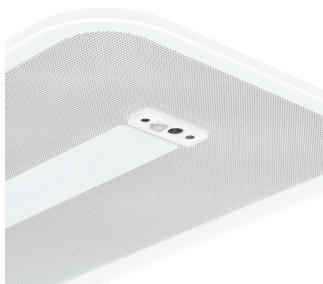
Driver	Built-in
Mains voltage	220-240 V / 50-60 Hz
Dimming	Dimmable
Control system input	DALI
Options	SpaceWise system can be used in combination with SmartBalance Free Floor Standing
Material	Housing: polycarbonate and sheet metal
	Cover/optic: PMMA or polycarbonate
Colour	White (WH)
Optic	OLC micro-lens optic made of clear acrylic (ACC-MLO)
Connection	Push-in connector (PI)
Maintenance	Optical module sealed for life; no internal cleaning required
Installation	Suspended mounting with a set of single steel-wire suspensions including a power cable, 170 cm
	Suspension set SM1: set with twin metal tubes
	Fast fine adjustment with clutch device (Reutlinger)
	Through-wiring possible

Versions



SmartBalance Suspended
SpaceWise SP480P luminaire,
direct lighting version

Product details



SmartBalance_Suspended_Space
Wise-SP480P_SP482P_SWZ-
DP02

SmartBalance Suspended, SpaceWise

Application Conditions

Ambient temperature range	+10 to +40 °C
Maximum dim level	1%

Approval and Application

Mech. impact protection code	IK02
Ingress protection code	IP40

Controls and Dimming

Dimmable	Yes
----------	-----

Operating and Electrical

Input Voltage	220 to 240 V
---------------	--------------

General Information

Cap-Base	-
CE mark	CE mark
Protection class IEC	Safety class I (I)
Optical cover/lens type	ACC-MLO
Driver included	Yes
Emergency lighting	No
ENEC mark	ENEC plus mark
Flammability mark	F
Gear	-
Glow-wire test	650/5
Embedded control	SWZ
Light source replaceable	No
Number of gear units	1 unit
Number of light sources	1
Optic type	No
UL mark	-

Initial Performance (IEC Compliant)

Initial chromaticity	(0.38, 0.38) SDCM <3
Init. Corr. Colour Temperature	4000 K
Luminous flux tolerance	+/-10%

Mechanical and Housing

Colour	White
Geometry	W24L134

General Information

Order Code	Full Product Name	Beam angle of light source	Lamp family code	Product Family Code
87576600	SP480P LED35S/840 PSD ACC-MLO SWZ SM1	- °	LED35S	SP480P
87577300	SP482P LED40S/840 PSD ACC-MLO SWZ SM1	-	LED40S	SP482P
07133200	SP480P LED35S/840 PSD ACC-MLO SWZ SM2	- °	LED35S	SP480P
07134900	SP482P LED40S/840 PSD ACC-MLO SWZ SM2	- °	LED40S	SP482P

Initial Performance (IEC Compliant)

Order Code	Full Product Name	Init. Colour Rendering Index	Initial LED luminaire efficacy	Initial luminous flux	Initial input power
87576600	SP480P LED35S/840 PSD ACC-MLO SWZ SM1	≥80	111 lm/W	3500 lm	31.5 W
87577300	SP482P LED40S/840 PSD	≥80	119 lm/W	4100 lm	34.5 W

Order Code	Full Product Name	Init. Colour Rendering Index	Initial LED luminaire efficacy	Initial luminous flux	Initial input power
	ACC-MLO SWZ SM1				
07133200	SP480P LED35S/840 PSD ACC-MLO SWZ SM2	>80	111 lm/W	3500 lm	31.5 W

SmartBalance Suspended, SpaceWise

Order Code	Full Product Name	Init. Colour Rendering Index	Initial LED luminaire efficacy	Initial luminous flux	Initial input power
07134900	SP482P LED40S/840 PSD	>80	119 lm/W	4100 lm	34.5 W

Order Code	Full Product Name	Init. Colour Rendering Index	Initial LED luminaire efficacy	Initial luminous flux	Initial input power
	ACC-MLO SWZ SM2				

