



Robust design, compact form

HF-Matchbox Red

HF-Matchbox Red is an affordable, reliable, compact, lightweight and high-frequency ballast for use with system wattages below 25 W in combination with TL mini, TL-D, TL5 and TL5c, PL-T/C, and PL-L/S lamps. The HF-M Red range has a robust design, meets all relevant international safety and performance standards and has an energy efficiency index (CELMA EEI) of A2. The ballast is primarily designed for Indoor application. For outdoor application, the luminaire should be minimum Classland need to be sufficiently protected against water & dust. The installation should also be guard against any lightening surge or any other necessary electrical protection as deemed in such typical installation & application.

Benefits

- Can be operated with movement-detection control systems.
- Automatic restart (after voltage dip or lamp exchange) ensures easy operation and hassle-free re-lamping.
- Suitable for use in class I or class II luminaires

Features

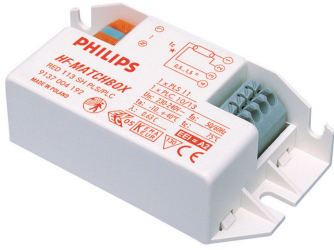
- Over 60,000 on/off switches on one lamp (depending on lamp/ballast combination)
- Suitable for emergency DC operation between 190 and 254 V
- Programmed, flicker-free, pre-heated start (<0.8 s) which allows the lamp to be switched on and off without reducing useful lamp life

Application

- Used with movement-detection control systems like Philips OccuPlus
- Mainly for indoor applications such as spotlights, downlights, light boxes, and emergency and security fixtures used largely in retail stores, office buildings, hotels, private homes and residential buildings
- Domestic applications such as outdoor garden lighting, garage areas, stairways

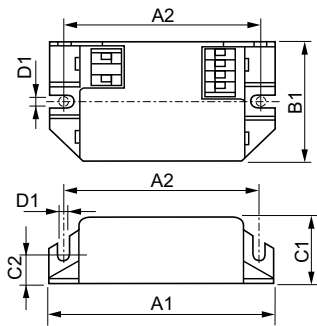
HF-Matchbox Red

Versions



HF-M RED 124 SH TL/TL5/PL-L 230-240V

Dimensional drawing



Product	D1	C1	C2	A1	A2	B1
HF-M RED 118 SH PL-C/PL-T 230-240V	4.4 mm	22.0 mm	10.0 mm	80.0 mm	70.0 mm	40.0 mm
HF-M RED 114 SH TL/TL5/PL-C/S 230-240V	4.2 mm	22.0 mm	10.0 mm	80.0 mm	70.0 mm	40.0 mm
HF-M RED 109 SH TL/PL-S 230-240V	4.4 mm	22.0 mm	10.0 mm	80.0 mm	70.0 mm	40.0 mm
HF-M RED 124 SH TL/TL5/PL-L 230-240V	4.4 mm	22.0 mm	10.0 mm	94.0 mm	70.0 mm	40.0 mm

Operating and Electrical

Input Frequency	50 to 60 Hz
Input Voltage	230 to 240 V

General Information

Number Of Lamps	1 piece/unit
-----------------	--------------

Mechanical and Housing

Housing	SH
---------	----

General Information

Order Code	Full Product Name	Number Of Products On MCB (16A Type) B) (Nom)	Lamp Type
913700420666	HF-M RED 124 SH TL/TL5/PL-L 230-240V	48	TL/TL5/PL-L
913700422866	HF-M RED 109 SH TL/PL-S 230-240V	159	TL/PL-S

Order Code	Full Product Name	Number Of Products On MCB (16A Type) B) (Nom)	Lamp Type
913700423266	HF-M RED 114 SH TL/TL5/PL-C/S 230-240V	101	TL/TL5/PL-C/S
913700423466	HF-M RED 118 SH PL-C/PL-T 230-240V	73	PL-C/PL-T

System characteristics

HF-Matchbox Red

Order Code	Full Product Name	Lamp Power On PL-C	Lamp Power On PL-L	Lamp Power On PL-S	Lamp Power On PL-T	Lamp Power On TL	Lamp Power On TL5	Rated Ballast- Lamp Power
913700420666	HF-M RED 124 SH TL/TL5/PL-L 230-240V	-	19.3 W	-	-	-	19.8 W	24 W
913700422866	HF-M RED 109 SH TL/PL-S 230-240V	-	-	6.5 W	-	5.3 W	-	9 W
913700423266	HF-M RED 114 SH TL/TL5/PL-C/S 230-240V	8.9 W	-	-	-	-	13.1 W	14 W
913700423466	HF-M RED 118 SH PL-C/PL-T 230-240V	15.9 W	-	-	15.2 W	-	-	18 W

