



Product Description

HF-Performer II for PL-T/C/R/L/TL5C lamps

Compact, lightweight high-frequency electronic ballast for PL-T/C/TL5C/R/L fluorescent lamps, based on EII technology

Benefits

- Robust design that meets all relevant international safety and performance standards and ensures good energy efficiency
- Automatic restart (after voltage dip or lamp exchange) ensures easy operation and hassle-free re-lamping
- Suitable for DC emergency operation, 186 to 275 V (at -10 °C) and in line with IEC/EN 60598-2-22 luminaire norms

Features

- 50,000-hour lifetime at maximum case temperature, combined with over 60,000 on/off switches on one lamp
- Programmed, flicker-free, pre-heated start (< 1.5 s) which allows the lamp to be switched on and off without reducing useful lamp life
- Active power factor correction to ensure constant light, irrespective of mains-voltage fluctuations
- The unit is protected against excessive mains voltage and incorrect connections.

Application

- Ideal for applications with high switching frequency, typical application areas include:
- Use with infrared remote control systems (e.g. movement detection)
- Department stores, shops, supermarkets, hotels, hospitals, office buildings, industrial premises
- Airports, railway stations
- Suitable for emergency lighting luminaires acc. to IEC 60598-2-22, excluding high-risk task areas

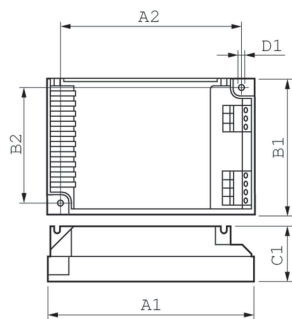
HF-Performer II for PL-T/C/R/L/TL5C lamps

Versions



GPPR PPLTCL5 PHL 0001

Dimensional drawing



Product	D1	C1	A1	A2	B1	B2
HF-P 1 22-42 PL-T/C/L/	4.5 mm	30.0	103.0	93.5	67.0	57.5
TL5C EII 220-240V		mm	mm	mm	mm	mm
HF-P 2 22-42 PL-T/C/L/	4.5 mm	30.0	103.0	93.5	67.0	57.5
TL5C EII 220-240V		mm	mm	mm	mm	mm

Operating and Electrical	
Input Frequency	50 to 60 Hz
Input Voltage	220 to 240 V
Line Frequency	50 to 60 Hz
Approval and Application	
Energy Efficiency Index	A2

Operating and Electrical

Order Code	Full Product Name	Number of Products on MCB (16A Type B) (Nom)
91397530	HF-P 1 22-42 PL-T/C/L/TL5C EII 220-240V	28

Order Code	Full Product Name	Number of Products on MCB (16A Type B) (Nom)
91399930	HF-P 2 22-42 PL-T/C/L/TL5C EII 220-240V	12

HF-Performer II for PL-T/C/R/L/TL5C lamps

