



HNF003

HNF003

Non-integral, general-purpose floodlight suitable for 1 x 250W to 400W metal halide or high pressure sodium lamps.

Features

- High-grade symmetrical or asymmetrical reflector projects narrow or wide, highly efficient light beams
- Wall, ceiling or surface mounting with wide range of adjustments for both down- and up-lighting
- Quick, easy access to lamp and gear, without affecting beam adjustment, through hinged rear cover
- Weatherproof housing hence minimal internal cleaning required
- Cast-on beam-aiming sight and protractor scale for quick daylight adjustment
- Also suitable for indoor use with ambient temperatures of up to 25°C
- Separate or backpack control gear available

Application

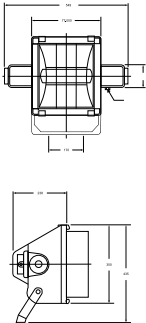
- Area lighting: car parks, construction sites, industrial areas
- Recreational/sports lighting: tennis courts, swimming pools
- Decorative lighting: building facades

HNF003

Versions



Dimensional drawing



HNF003

General Information	
Cap-Base	E40
Gear	E
Lamp family code	-
Number of light sources	1 pc
Product Family Code	HNF003

General Information

order code	Optic type
911270230380	Symmetrical wide beam



order code	Optic type
911270244980	Symmetrical wide beam
911270245080	Asymmetrical narrow beam

