



Product Description

PAR56

Extremely powerful pressed-glass 179 mm diameter reflector lamps

Benefits

- For indoor and outdoor use wherever high illuminance levels are required

Features

- Made of heat-resistant glass
- Special sturdy, shock-resistant 12V version available for underwater applications
- 12V lamp has screw terminals for secure connection because of the high running current (25A)

Application

- Spot versions are designed for long-distance beaming
- Flood and Wide Flood versions are mainly used for high mounting applications
- Displays, museums, public and commercial buildings, towers, churches, high-roofed halls, sports halls, garden lighting, exhibitions
- PAR56 Underwater: swimming pools and fountains, or wherever extra-low-voltage lamps are required for safety

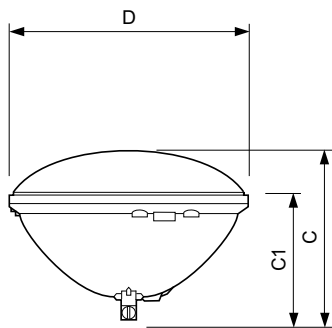
PAR56

Versions



PAR56, UW

Dimensional drawing



Product	D (max)	C (max)	C1
PAR56 300W Multipurpose 12V UW 1CT/8	178.5 mm	119.3 mm	98 mm

