

PHILIPS

Lighting



OccuSwitch Wireless - switching on savings in existing installations

OccuSwitch Wireless

A wide range of wireless sensors with movement detection to control an area of 20-25 m². Battery-operated, with a typical lifetime of 8-10 years. The actuator can switch any load up to 6 A and can be located in the ceiling or corridor. OccuSwitch Wireless will switch the lights off in a room or area when it is vacated and so save up to 30% on electricity. A detachable mains wiring connector enables easy installation. Separate Wieland and CEE cables are available for even easier, faster and trouble-free installation. Up to 10 sensors and/or actuators can be combined in one parallel network. The maximum distance between the sensor and actuator is 10 meters (depending on the application). With the extended scope of OccuSwitch Wireless functionality (increased number of sensors and interoperable with wireless ActiLume range), all wireless devices should be from the same version (LRM/LRA/LLC XXXX/10 or higher).

Benefits

- Energy savings of up to 30%. Additional savings can be obtained in combination with ActiLume Wireless.
- Offers an easy-to-apply solution, especially for existing non-electronic (EM) lighting systems.
- Wireless sensor can be mounted in various places and offers maximum flexibility. The actuator is designed for any wiring system.

Features

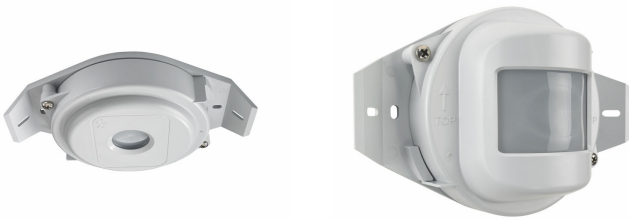
- Smart timer extends the delay time by 5% if movement is detected shortly after switch-off, assuming that the area is still in use but there is very little movement.
- The ceiling sensor has a retractable shield that can be used to shield off areas, e.g. corridors adjacent to the area in which OccuSwitch Wireless is operating.
- There is considerable freedom in terms of where to mount the OccuSwitch Wireless actuator to minimize installation cost and time.

OccuSwitch Wireless

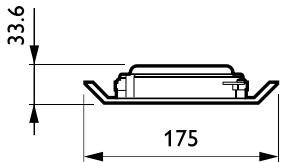
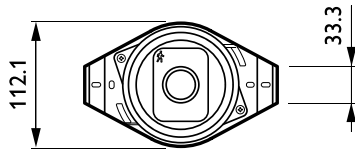
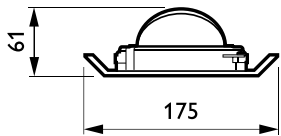
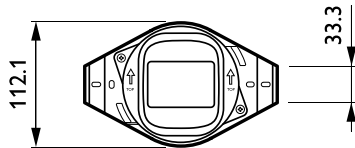
Application

- OccuSwitch Wireless is designed for use in open-plan offices, schools and similar applications, including toilets, storage rooms, etc.
- The ceiling sensor is optimized for mounting heights between 2.5 and 4 meters, the corridor, corner and wall sensors for heights between 2.1 and 2.5 meters

Versions



Dimensional drawing



Product

LRH1765/00 IP65 Holder OS W C-C-W Sensor

Product

LRH1763/00 IP65 Holder OS W multi Sensor

OccuSwitch Wireless

Product details

Front of the LRH1763/00 IP65 Holder
OS W Multi-Sensor



Front of the LRH1765/00 IP65 Holder
OS W C-C-W Sensor

