



ArenaVision MVF404 – exceptional optical efficiency

ArenaVision MVF404

The ArenaVision MVF404 floodlight – designed for outdoor sports stadiums – dramatically increases the theatrical and emotional impact of sports for TV audiences and spectators, while allowing the players to perform under optimal visual conditions. Thanks to the innovative Philips MHN-SE 2000 W high-output compact single-ended metal-halide lamp and high-tech single-piece precision optics, ArenaVision MVF404 offers much higher optical efficiency than ever before. In addition, this 2 kW floodlight boasts easy lamp fitting and replacement, full IP65 compliance, safety knife connector system and a breakthrough electronic hot-restrike solution – while continuing to deliver all the traditional benefits of Philips ArenaVision systems. The (optional) flicker-free version of ArenaVision MVF404 is designed to ensure that the flicker effect is fully eliminated in order to guarantee perfect images filmed with super-slow-motion cameras at sports events. The flicker-free version of ArenaVision MVF404 comes equipped with a special electronic igniter, which works in combination with Philips' electronic-ballast GearUnits (ECM330), to be ordered separately.

Benefits

- Innovative floodlight with Philips' compact single-ended lamp; dedicated optics ensure maximum optical efficiency and enable accurate light distribution with a minimum of spill light
- Quartz metal halide lamp meets the most demanding lighting and TV broadcast requirements with excellent colour rendering
- The flicker-free version completely eliminates flicker effect, thereby guaranteeing perfect images filmed with super-slow-motion cameras

ArenaVision MVF404

Features

- High-output compact single-ended metal-halide lamp with excellent colour rendering
- Dedicated precision optics
- IP65
- Safety knife connector system
- Electronic hot-restrike
- Flicker-free light version for super-slow-motion cameras

Application

- Outdoor sport stadiums

Specifications

Type	MVF404
Light source	HID: - 1 x MASTER MHN-SE HO / GX22-HR / 2000 W
Lamp included	Yes (light color 956)
Optic	Beam category B1 (B1) Beam category B2 (B2) Beam category B3 (B3) Beam category B4 (B4) Beam category B5 (B5) Beam category B6 (B6) Beam category B7 (B7) Beam category B8 (B8)
Optical cover	Front-glass for downlighting (DOWN) and uplighting versions (UP)
Ignitor	Series (SI), integral Hot-restrike, electronic (HRE), integral

Specifications

Installation	On mast head frame, ceiling, wall and floor mounting The lamp is easily installed and lamping/relamping can be done with one hand only Precision aiming facilities at both top and bottom of the housing for use in conjunction with the ZVF403 PAD accessory Adjustment of mounting bracket: 360° Ambient temperature outdoor: 35°C (25°C indoor) Drag factor (Cx): 0.93 Projected area in 70° position: 0.20 m Max adjustment from the horizontal: -90 / +90°
Maintenance	Lamp access by opening clips of rear cover (tool-less) Equipped with knife connector system, which automatically disconnects the mains power when the rear-access back cover is opened (no need for additional relay/contactor or any extra cabling) No internal cleaning required

Options	Aiming memory (AM) to safeguard the original aiming position of the luminaire during servicing Hot re-strike versions enabling immediate restoration of lighting after power supply failure Uplighting versions available for architectural lighting Special cable sleeve version for tropical regions
Materials and finishing	Housing and rear cover: non-corrosive, high-pressure die-cast aluminum Glass: chemically toughened, 3 mm thick (for downlighting versions), ceramic 3 mm thick (for uplighting versions) Mounting bracket: zinc nickel treated Clips: stainless steel (to secure the back cover) Reflector: anodized and brightened 99.99% aluminum Finishing in raw aluminum

Accessories	External louver (ZVF403 GS), precision (ZVF403 PAD) aiming device
Remarks	Equipped with series ignitor (SI) and terminal block in aluminum connection box on the bracket Color filters for architectural lighting are available on request Wire mesh to prevent large glass falling out Pre-wired 380 - 415 V / 50 Hz gear trays (ZVF320) are available, to be ordered separately
Main applications	Outdoor sport stadiums

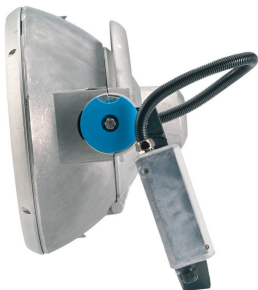
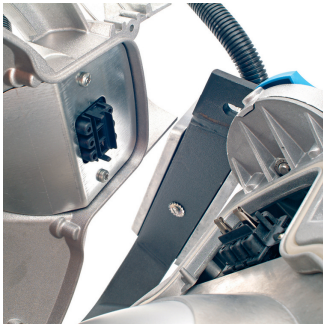
ArenaVision MVF404

Versions

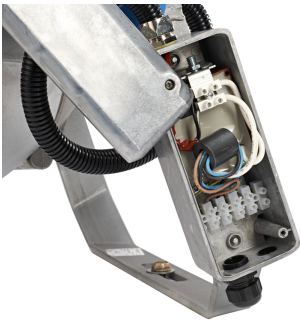
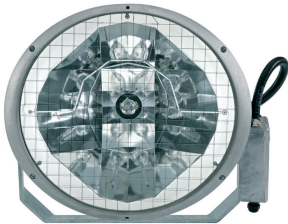
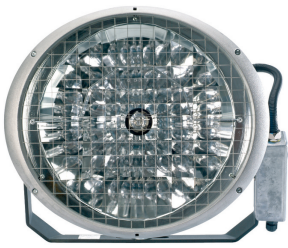
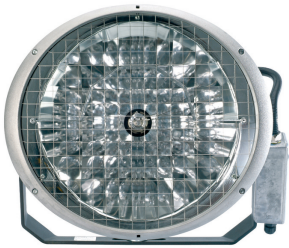
ArenaVision MVF404 sports flood-lighting luminaire



Product details



Product details



ArenaVision MVF404

Approval and Application

Mech. impact protection code	IK08
------------------------------	------

General Information

CE mark	CE mark
Light source colour	956 daylight
ENEC mark	ENEC mark
Gear	-
Lamp family code	MHN-SEH
Lamp power	2000 W
Number of light sources	1
Product Family Code	MVF404

Initial Performance (IEC Compliant)

Init. Corr. Colour Temperature	5600 K
--------------------------------	--------

General Information

Order Code	Full Product Name	Optical cover/lens type	Optic type
910502218818	MVF404 MHN-SEH2000W/956 B1 HRE	DOWN	Beam category B1
910502218918	MVF404 MHN-SEH2000W/956 B2 HRE	DOWN	Beam category B2
910502219018	MVF404 MHN-SEH2000W/956 B3 HRE	DOWN	Beam category B3
910502219118	MVF404 MHN-SEH2000W/956 B4 HRE	DOWN	Beam category B4
910502219218	MVF404 MHN-SEH2000W/956 B5 HRE	DOWN	Beam category B5
910502219318	MVF404 MHN-SEH2000W/956 B6 HRE	DOWN	Beam category B6
910502219418	MVF404 MHN-SEH2000W/956 B7 HRE	DOWN	Beam category B7
910502279318	MVF404 MHN-SEH2000W/956 B8 HRE	DOWN	Beam category B8
910505014218	MVF404 MHN-SEH2000W/956 B1 ESI	-	Beam category B1
910505014318	MVF404 MHN-SEH2000W/956 B2 ESI	-	Beam category B2
910505014418	MVF404 MHN-SEH2000W/956 B3 ESI	-	Beam category B3
910505014518	MVF404 MHN-SEH2000W/956 B4 ESI	-	Beam category B4
910505014618	MVF404 MHN-SEH2000W/956 B5 ESI	-	Beam category B5
910505014718	MVF404 MHN-SEH2000W/956 B6 ESI	-	Beam category B6
910505014818	MVF404 MHN-SEH2000W/956 B7 ESI	-	Beam category B7
910505014918	MVF404 MHN-SEH2000W/956 B8 ESI	-	Beam category B8

