



OptiFlood – compact and complete solution

OptiFlood Mini MVP504

Philips has a long tradition of excellence in environmentally friendly asymmetric floodlighting systems for sports and general area lighting as well as architectural applications. OptiFlood's extremely efficient, best-in-class optical system provides an accurately controlled light distribution – total light cut-off above the horizontal and a peak beam intensity at high angles – keeping obtrusive light to a minimum. Both the MVP504 and MVP506 versions are available with two types of reflector – asymmetric or road-lighting POT optics – for flexibility in application. They can also accommodate CosmoPolis metal-halide lamps for good color rendering, high-pressure sodium lamps for economical operation, and MASTERColour CDM Elite MW lamps for highly efficient lighting with longer-lasting white light. OptiFlood is also available in a LED version (BVP506). With its compact shape and aesthetically pleasing design, OptiFlood can be used in applications where design and appearance are just as important as technical performance. In the design, attention has also been focused on the detailing. This has led to integrated 'hidden' hinges, angle adjustment designed as part of the body and a mounting bracket angled to allow more aesthetic integration onto columns.

Benefits

- Environment-friendly asymmetrical floodlighting systems for general area lighting as well as security and industrial area lighting
- Best-in-class optical system for accurately controlled light distribution to prevent uncontrolled stray and spill light
- Compact shape and pleasing design allows OptiFlood to be used in settings where design and appearance are just as important as technical performance

OptiFlood Mini MVP504

Features

- Compact shape and pleasing design
- Two types of reflector – asymmetric or road-lighting POT optics
- Can accommodate CosmoPolis metal-halide lamps, high-pressure sodium lamps, and MASTERColour CDM Elite MW lamps
- Also available in a LED version

Application

- General area lighting
- Car parks
- Architectural floodlighting

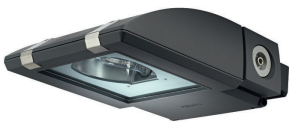
Specifications

Type	MVP504
Light source	HID: <ul style="list-style-type: none">- 1 x MASTERColour CDM-TD / RX7s / 70, 150 W- 1 x MASTERColour CDM-T / G12 / 35, 70 W- 1 x MASTER CosmoWhite CPO-TW / PGZ12 / 45, 60, 90, 140 W- 1 x MASTER CityWhite CDO-TT / E27 / 70 W- 1 x MASTER SON-T PIA Plus / E27 / 50, 70 W
Lamp included	Yes (K or light color 828 or 942)
Ballast (integrated)	Electromagnetic 230 or 240 V / 50 Hz Electronic, 220-240 V / 50-60 Hz: <ul style="list-style-type: none">- Electronic (EB)
Optic	CosmoPolis POT optic (OC) Facetted road lighting POT (TP-S) for 35 and 70 W CDM-T lamp versions Asymmetrical (A60/A25-NB/A25-WB) for 45-150 W lamp versions
Ignitor	Semi-parallel, self-stopping (ST)
Options	Safety class 2
Materials and finishing	Housing: high-pressure die-cast aluminum, non-corrosive Glass: thermally hardened, 4 mm thick Clips: stainless steel Reflector: purity, anodized aluminum, high reflective

Color	'Raw' aluminum or ultra-dark grey (GR) Other RAL colors available on request
Installation	On mast head frame, ceiling, wall and floor mounting Front cover hinges for easy access Aiming indicator ring is integrated on housing and bracket Ambient temperature outdoor: 35°C (25°C indoor) Recommended mounting height: 4 - 6 m Adjustable tilt angle: 15° CosmoPolis optic (OC): 6 positions Max windage area: 0.04 m Max SCx value by side: 0.037 m Max adjustment from the horizontal: - 180 to +180° Max vertical aiming: - 90 to +105° Uplighting for indoor only
Maintenance	Lamp and gear unit access by opening the hinged front glass for in position lamp replacement No internal cleaning required
Accessories	Wire guard Styled pole mounting brackets (single, double, triple and quadruple) available on request

Versions

OptiFlood Mini MVP504 area-lighting
luminaire



OptiFlood Mini MVP504

Product details

Front cover is held in place by two stainless-steel clips, and can be released easily using a screwdriver



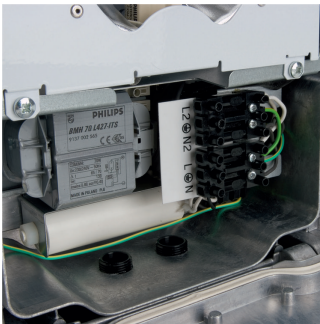
When opened, front cover hinges back to provide full access to gear and lamp compartment



When opened, front cover hinges back to provide full access to gear and lamp compartment



Front cover fully open, providing excellent access to all components



Connector



CosmoPolis optic



Facetted road-lighting POT optic



Facetted road-lighting POT optic

OptiFlood Mini MVP504

Product details



Asymmetrical optic



Asymmetrical optic

Approval and Application

Mech. impact protection code IK08

General Information

CE mark CE mark
 Optical cover/lens type Clear glass
 ENEC mark -
 Number of light sources 1 pc
 Product Family Code MVP504

General Information

Order Code	Full Product Name	Light source color	Gear	Lamp family code	Lamp power	Optic type
910403759712	MVP504 CDM-TD70W/942 EB I A	942 neutral white	EB	CDM-TD	70 W	Asymmetrical
910403760012	MVP504 CDM-TD150W/942 EB I A	942 neutral white	EB	CDM-TD	150 W	Asymmetrical
910403760112	MVP504 CDO-TT70W K EB I A	-	EB	CDO-TT	70 W	Asymmetrical
910403760412	MVP504 CPO-TW45W K EB I A	-	EB	CPO-TW	45 W	Asymmetrical
910403760512	MVP504 CPO-TW60W K EB I A	-	EB	CPO-TW	60 W	Asymmetrical
910403760612	MVP504 CPO-TW90W K EB I A	-	EB	CPO-TW	90 W	Asymmetrical
910403761612	MVP504 CDM-TD150W/942 EB II A	942 neutral white	EB	CDM-TD	150 W	Asymmetrical
910403762012	MVP504 CPO-TW45W K EB II A	-	EB	CPO-TW	45 W	Asymmetrical
910403762212	MVP504 CPO-TW90W K EB II A	-	EB	CPO-TW	90 W	Asymmetrical
910403762612	MVP504 SON-TPP70W K EB II A	-	EB	SON-TPP	70 W	Asymmetrical
910403762912	MVP504 CDM-TD70W/942 EB I A GR	942 neutral white	EB	CDM-TD	70 W	Asymmetrical
910403763212	MVP504 CDM-TD150W/942 EB I A GR	942 neutral white	EB	CDM-TD	150 W	Asymmetrical
910403763312	MVP504 CDO-TT70W K EB I A GR	-	EB	CDO-TT	70 W	Asymmetrical
910403763612	MVP504 CPO-TW45W K EB I A GR	-	EB	CPO-TW	45 W	Asymmetrical
910403763712	MVP504 CPO-TW60W K EB I A GR	-	EB	CPO-TW	60 W	Asymmetrical
910403763812	MVP504 CPO-TW90W K EB I A GR	-	EB	CPO-TW	90 W	Asymmetrical
910403763912	MVP504 CPO-TW140W K EB I A GR	-	EB	CPO-TW	140 W	Asymmetrical
910403764512	MVP504 CDM-TD70W/942 EB II A GR	942 neutral white	EB	CDM-TD	70 W	Asymmetrical
910403764812	MVP504 CDM-TD150W/942 EB II A GR	942 neutral white	EB	CDM-TD	150 W	Asymmetrical
910403764912	MVP504 CDO-TT70W K EB II A GR	-	EB	CDO-TT	70 W	Asymmetrical
910403765212	MVP504 CPO-TW45W K EB II A GR	-	EB	CPO-TW	45 W	Asymmetrical
910403765312	MVP504 CPO-TW60W K EB II A GR	-	EB	CPO-TW	60 W	Asymmetrical
910403765412	MVP504 CPO-TW90W K EB II A GR	-	EB	CPO-TW	90 W	Asymmetrical
910403766112	MVP504 CDM-T35W/842 EB I TP-S	842 neutral white	EB	CDM-T	35 W	Open T-POT small
910403766412	MVP504 CDM-T70W/942 EB I TP-S	942 neutral white	EB	CDM-T	70 W	Open T-POT small
910403766512	MVP504 CDM-T70W/942 I TP-S ST	942 neutral white	CONV	CDM-T	70 W	Open T-POT small

OptiFlood Mini MVP504

Order Code	Full Product Name	Light source color	Gear	Lamp family code	Lamp power	Optic type
910403766712	MVP504 CPO-TW45W K EB I	-	EB	CPO-TW	45 W	Optic for CosmoPolis lamp
910403766812	MVP504 CPO-TW60W K EB I	-	EB	CPO-TW	60 W	Optic for CosmoPolis lamp
910403766912	MVP504 CPO-TW90W K EB I	-	EB	CPO-TW	90 W	Optic for CosmoPolis lamp
910403767112	MVP504 CDM-T35W/842 EB II TP-S	842 neutral white	EB	CDM-T	35 W	Open T-POT small
910403767812	MVP504 CPO-TW60W K EB II	-	EB	CPO-TW	60 W	Optic for CosmoPolis lamp
910403768112	MVP504 CDM-T35W/842 EB I TP-S GR	842 neutral white	EB	CDM-T	35 W	Open T-POT small
910403768812	MVP504 CPO-TW60W K EB I GR	-	EB	CPO-TW	60 W	Optic for CosmoPolis lamp
910403768912	MVP504 CPO-TW90W K EB I GR	-	EB	CPO-TW	90 W	Optic for CosmoPolis lamp
910403769112	MVP504 CDM-T35W/842 EB II TP-S GR	842 neutral white	EB	CDM-T	35 W	Open T-POT small
910403769412	MVP504 CDM-T70W/942 EB II TP-S GR	942 neutral white	EB	CDM-T	70 W	Open T-POT small
910403769712	MVP504 CPO-TW45W K EB II GR	-	EB	CPO-TW	45 W	Optic for CosmoPolis lamp
910403769812	MVP504 CPO-TW60W K EB II GR	-	EB	CPO-TW	60 W	Optic for CosmoPolis lamp
910403976312	MVP504 CDM-TD70W/830 EB I A GR	830 warm white	EB	CDM-TD	70 W	Asymmetrical

Mechanical and Housing

Order Code	Full Product Name	Color	Order Code	Full Product Name	Color
910403759712	MVP504 CDM-TD70W/942 EB I A	-	910403765212	MVP504 CPO-TW45W K EB II A GR	Gray
910403760012	MVP504 CDM-TD150W/942 EB I A	-	910403765312	MVP504 CPO-TW60W K EB II A GR	Gray
910403760112	MVP504 CDO-TT70W K EB I A	-	910403765412	MVP504 CPO-TW90W K EB II A GR	Gray
910403760412	MVP504 CPO-TW45W K EB I A	-	910403766112	MVP504 CDM-T35W/842 EB I TP-S	-
910403760512	MVP504 CPO-TW60W K EB I A	-	910403766412	MVP504 CDM-T70W/942 EB I TP-S	-
910403760612	MVP504 CPO-TW90W K EB I A	-	910403766512	MVP504 CDM-T70W/942 I TP-S ST	-
910403761612	MVP504 CDM-TD150W/942 EB II A	-	910403766712	MVP504 CPO-TW45W K EB I	-
910403762012	MVP504 CPO-TW45W K EB II A	-	910403766812	MVP504 CPO-TW60W K EB I	-
910403762212	MVP504 CPO-TW90W K EB II A	-	910403766912	MVP504 CPO-TW90W K EB I	-
910403762612	MVP504 SON-TPP70W K EB II A	-	910403767112	MVP504 CDM-T35W/842 EB II TP-S	-
910403762912	MVP504 CDM-TD70W/942 EB I A GR	Gray	910403767812	MVP504 CPO-TW60W K EB II	-
910403763212	MVP504 CDM-TD150W/942 EB I A GR	Gray	910403768112	MVP504 CDM-T35W/842 EB I TP-S GR	Gray
910403763312	MVP504 CDO-TT70W K EB I A GR	Gray	910403768812	MVP504 CPO-TW60W K EB I GR	Gray
910403763612	MVP504 CPO-TW45W K EB I A GR	Gray	910403768912	MVP504 CPO-TW90W K EB I GR	Gray
910403763712	MVP504 CPO-TW60W K EB I A GR	Gray	910403769112	MVP504 CDM-T35W/842 EB II TP-S GR	Gray
910403763812	MVP504 CPO-TW90W K EB I A GR	Gray	910403769412	MVP504 CDM-T70W/942 EB II TP-S GR	Gray
910403763912	MVP504 CPO-TW140W K EB I A GR	Gray	910403769712	MVP504 CPO-TW45W K EB II GR	Gray
910403764512	MVP504 CDM-TD70W/942 EB II A GR	Gray	910403769812	MVP504 CPO-TW60W K EB II GR	Gray
910403764812	MVP504 CDM-TD150W/942 EB II A GR	Gray	910403976312	MVP504 CDM-TD70W/830 EB I A GR	Gray
910403764912	MVP504 CDO-TT70W K EB II A GR	Gray			

