



CoreLine Recessed – the clear choice for LED

CoreLine recessed

Whether for a new building or renovation of an existing space, customers want lighting solutions that provide quality of light and substantial energy and maintenance savings. The new CoreLine Recessed range of LED products can be used to replace functional luminaires in general lighting applications. The process of selecting, installing and maintaining is so easy – it's a simple switch.

Benefits

- Enables a simple switch from basic conventional luminaires to LED luminaires
- Enables a simple switch from basic conventional fluorescent luminaires to LED luminaires
- Energy savings of up to 45% compared to functional TL-D luminaires
- Energy saving of over 45% compared to functional TL5 luminaires
- Slim design with a height of less than 35 mm
- Slim design with a height of only 35 mm

Features

- Integrated LED technology
- Integrated LED technology
- Slim housing
- Slim housing
- Surface-mounted version also available (also suitable for suspension)
- Surface-mounted version also available (also suitable for suspension)

Application

- General lighting
- General lighting

CoreLine recessed

Warnings and Safety

- The product is IPX0 & as such is not protected against water ingress & as such we strongly recommend that The environment in which The luminaire is to be installed is suitably checked
- If the above advice is not taken and the luminaires are subject to water ingress, Philips / Signify cannot guarantee safe failure & product warranty will become void

Versions

CoreLine Recessed



RC136B 31S_37S_43S/840 PSU
W60L60 NOC W3_SPP



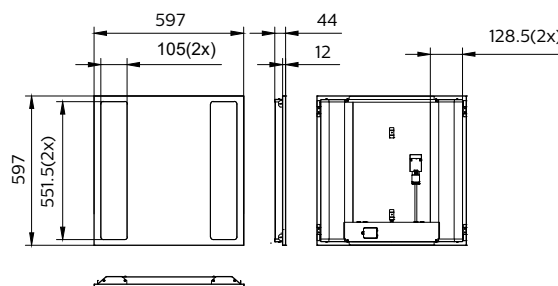
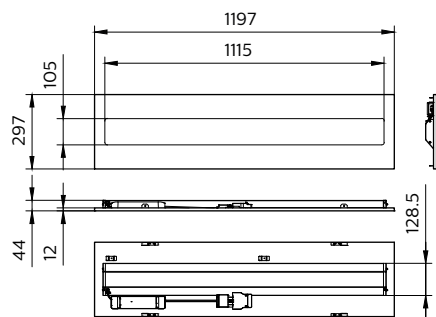
RC136B 31S_37S_43S/840 PSD
W30L120 OC_SPP



RC136B 31S_37S_43S/840 PSU
W60L60 OC_SPP



Dimensional drawing

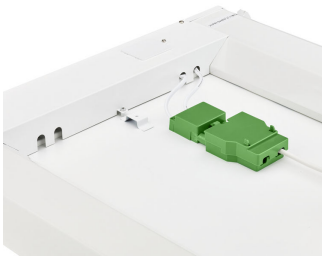


Product details

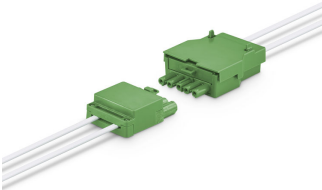
CoreLine Recessed Backside



CoreLine Recessed Backside with connector



CoreLine Recessed connector PSD (dali)



CoreLine Recessed in ceiling



CoreLine_Recessed_RC136B_60x60



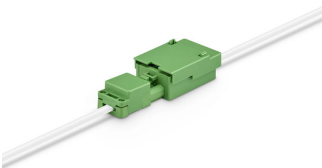
CoreLine Recessed



CoreLine Recessed connector PSU (On/Off))



CoreLine Recessed connector PSU (On/Off))



CoreLine Recessed Edge



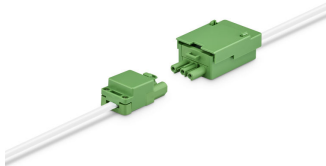
CoreLine recessed

Product details

CoreLine Recessed Edge



CoreLine Recessed connector PSU (On/Off))



CoreLine Recessed Safety Cable



CoreLine Recessed in ceiling



General Information	
CE mark	Yes
Driver included	Yes
ENEC mark	ENEC mark
Flammability mark	For mounting on normally flammable surfaces
Glow-wire test	Temperature 650 °C, duration 30 s
Light source replaceable	No
Number of gear units	1 unit
Light Technical	
Correlated Color Temperature (Nom)	4000 K
Color rendering index (CRI)	≥80
Flickering value (PstLM) - Flickering value as per EN 61000-3-3	1
Operating and Electrical	
Input Voltage	220-240 V
Line Frequency	50 or 60 Hz
Mechanical and Housing	
Housing Color	White
Approval and Application	
Mech. impact protection code	IK03
Ingress protection code	IP20/44
Initial Performance (IEC Compliant)	
Initial chromaticity	(0.38, 0.38) SDCM ≤3
Luminous flux tolerance	+/-10%
Application Conditions	
Suitable for random switching	Yes

General Information

Order Code	Full Product Name	Service tag
911401808285	RC136B 60S/840 PSU W60L60 OC	-
911401881181	RC136B 31S_37S_43S/840 PSU W60L60 NOC W3	No
911401880981	RC136B 31S_37S_43S/840 PSD W30L120 OC	No
911401880481	RC136B 31S_37S_43S/840 PSU W60L60 OC	No

Light Technical (1/2)

Order Code	Full Product Name	"All-in" Type	Luminous	Luminous Flux	Optic type
			Efficacy (rated) (Nom)		
911401808285	RC136B 60S/840 PSU W60L60 OC	-	135 lm/W	6,000 lm	Beam angle 84°
911401881181	RC136B 31S_37S_43S/840	"All-in" Multi Lumen	140 lm/W	3,100 lm	Beam angle 100°

Order Code	Full Product Name	"All-in" Type	Luminous	Luminous Flux	Optic type
			Efficacy (rated) (Nom)		
	PSU W60L60 NOC W3				
911401880981	RC136B 31S_37S_43S/840 PSD W30L120 OC	"All-in" Multi Lumen	140 lm/W	3,100 lm	Beam angle 84°
911401880481	RC136B 31S_37S_43S/840 PSU W60L60 OC	"All-in" Multi Lumen	140 lm/W	3,100 lm	Beam angle 84°

Light Technical (2/2)

CoreLine recessed

Order Code	Full Product Name	Stroboscopic effect visibility measure (SVM)
911401808285	RC136B 60S/840 PSU W60L60 OC	0.4
911401881181	RC136B 31S_37S_43S/840 PSU W60L60 NOC W3	1.6

Order Code	Full Product Name	Stroboscopic effect visibility measure (SVM)
911401880981	RC136B 31S_37S_43S/840 PSD W30L120 OC	1.6
911401880481	RC136B 31S_37S_43S/840 PSU W60L60 OC	1.6

Operating and Electrical

Order Code	Full Product Name	Power Consumption
911401808285	RC136B 60S/840 PSU W60L60 OC	44 W
911401881181	RC136B 31S_37S_43S/840 PSU W60L60 NOC W3	31 W

Order Code	Full Product Name	Power Consumption
911401880981	RC136B 31S_37S_43S/840 PSD W30L120 OC	31 W
911401880481	RC136B 31S_37S_43S/840 PSU W60L60 OC	31 W

Temperature

Order Code	Full Product Name	Ambient temperature range
911401808285	RC136B 60S/840 PSU W60L60 OC	-10 to +35 °C
911401881181	RC136B 31S_37S_43S/840 PSU W60L60 NOC W3	-10 to +40 °C
911401880981	RC136B 31S_37S_43S/840 PSD W30L120 OC	-10 to +40 °C

Order Code	Full Product Name	Ambient temperature range
911401880481	RC136B 31S_37S_43S/840 PSU W60L60 OC	-10 to +40 °C

Controls and Dimming

Order Code	Full Product Name	Dimmable
911401808285	RC136B 60S/840 PSU W60L60 OC	No
911401881181	RC136B 31S_37S_43S/840 PSU W60L60 NOC W3	No

Order Code	Full Product Name	Dimmable
911401880981	RC136B 31S_37S_43S/840 PSD W30L120 OC	Yes
911401880481	RC136B 31S_37S_43S/840 PSU W60L60 OC	No

Approval and Application

Order Code	Full Product Name	Protection class IEC
911401808285	RC136B 60S/840 PSU W60L60 OC	Safety class II
911401881181	RC136B 31S_37S_43S/840 PSU W60L60 NOC W3	Safety class I

Order Code	Full Product Name	Protection class IEC
911401880981	RC136B 31S_37S_43S/840 PSD W30L120 OC	Safety class II
911401880481	RC136B 31S_37S_43S/840 PSU W60L60 OC	Safety class I

Application Conditions

Order Code	Full Product Name	Maximum dim level
911401808285	RC136B 60S/840 PSU W60L60 OC	-
911401881181	RC136B 31S_37S_43S/840 PSU W60L60 NOC W3	-

Order Code	Full Product Name	Maximum dim level
911401880981	RC136B 31S_37S_43S/840 PSD W30L120 OC	3%

