



LumiStone – inspiring performance

LumiStone SP520P/SP522P/SP524P/SP526P

Customers within the office, retail and hospitality sectors want to create spaces with a pleasant and inviting atmosphere. Luminaires with an appealing design and top-notch performance play a pivotal role in achieving this. LumiStone is a LED luminaire consisting of two smaller ellipses rather than the traditional single voluminous piece. The ellipses have soft curvatures and resemble smooth stones found in nature. The flexible light effects created with direct and indirect light make LumiStone the perfect choice for inspiring lighting designs. Thanks to its cutting-edge LED technology, LumiStone is also highly energy-efficient, delivering immediate savings on operational costs. A range of innovative mounting options make LumiStone extremely versatile in application.

Benefits

- Creates a truly inspiring environment with appealing design and indirect lighting
- Over 50% energy savings compared to a functional luminaire, and even more compared to decorative solutions
- Many variations thanks to innovative mounting options

Features

- Choice of direct and direct/indirect lighting
- Office norm-compliant
- Versions available for concrete and recessed ceilings

Application

- Offices – general and task lighting
- Retail
- Hospitality

Specifications

LumiStone SP520P/SP522P/SP524P/SP526P

Type	SP520P (dual module, clips to an exposed T-bar ceiling, direct lighting) SP522P (dual module, clips to an exposed T-bar ceiling, direct and indirect lighting) SP524P (dual module, decorative ceiling bar, direct lighting) SP526P (dual module, decorative ceiling bar, direct and indirect lighting)
Light source	Philips LED module PP
Power (+/-10%)	SP520P and SP524P: 29 W, 31 W SP522P and SP526P: 38 W, 40 W
Luminous flux	SP520P and SP524P: 3000 lm in total, 1500 lm for each ellipse SP522P and SP526P: 4000 lm in total, 2000 lm for each ellipse
Correlated Color	3000 or 4000 K
Temperature	
Color Rendering Index	≥ 80
Median useful life L80B50	50,000 hours
Median useful life L90B50	25,000 hours
Driver failure rate	1% per 5000 hours
Average ambient temperature	+25 °C

Operating temperature range	+10 to +40 °C
Driver	SP520P and SP522P: separate SP524P and SP526P: built in
Mains voltage	220-240 V / 50-60 Hz
Dimming	Dimmable
Controls system input	DALI
Material	Housing and optics: poly-carbonate
Color	White (WH) and light grey (GR)
Optic	Poly-carbonate LED cup
Connection	Push-in connector with pull relief
Installation	SP520P and SP522P: connection with clips to an exposed T-bar ceiling with two triangular steel-wire suspensions (SMTT), both with metal-like power cord, 150 cm, driver in separate driver box SP524P and SP526P: decorative ceiling bar with integrated driver, screw mounting to ceiling Through-wiring possible: no

Versions



LumiStone SP520/522P suspended luminaire



LumiStone SP520/522P suspended luminaire



LumiStone SP524/526P suspended luminaire



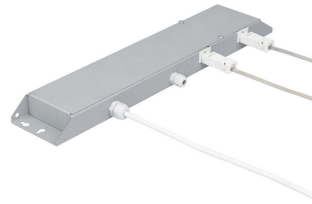
LumiStone SP524/526P suspended luminaire

LumiStone SP520P/SP522P/SP524P/SP526P

Product details



Light effect



Driver box



Poly-carbonate LED cup



Suspension set



Connection with clips to an exposed T-bar ceiling for SP520P and SP522P versions

LumiStone SP520P/SP522P/SP524P/SP526P

Application Conditions

Ambient temperature range	+10 to +40 °C
Maximum dim level	1%
Suitable for random switching	Yes (relates to presence/movement detection and daylight harvesting)

Approval and Application

Mech. impact protection code	IK02
------------------------------	------

Controls and Dimming

Dimmable	Yes
----------	-----

Operating and Electrical

Input Voltage	220-240 V
---------------	-----------

General Information

Beam angle of light source	- °
CE mark	CE mark
Protection class IEC	Safety class I (I)
Driver included	Yes
ENEC mark	ENEC plus mark
Flammability mark	F
Light source replaceable	No
Number of gear units	1 unit
Optic type	No
UL mark	-

Initial Performance (IEC Compliant)

Init. Colour Rendering Index	≥80
Luminous flux tolerance	+/-10%

Approval and Application

Order Code	Full Product Name	Ingress protection code
91840900	SP520P 2xLED15S/830 PSD-E SMTT WH	IP20
91842300	SP520P 2xLED15S/840 PSD-E SMTT WH	IP20
91844700	SP522P 2xLED20S/830 PSD-E SMTT WH	IP20
91846100	SP522P 2xLED20S/840 PSD-E SMTT WH	IP20
91841600	SP520P 2xLED15S/830 PSD-E SMTT GR	IP20
91843000	SP520P 2xLED15S/840 PSD-E SMTT GR	IP20
91845400	SP522P 2xLED20S/830 PSD-E SMTT GR	IP20
91847800	SP522P 2xLED20S/840 PSD-E SMTT GR	IP20
91848500	SP524P 2xLED15S/830 PSD DCB WH	IP40
91850800	SP524P 2xLED15S/840 PSD DCB WH	IP40
91852200	SP526P 2xLED20S/830 PSD DCB WH	IP40
91854600	SP526P 2xLED20S/840 PSD DCB WH	IP40
91849200	SP524P 2xLED15S/830 PSD DCB GR	IP40
91851500	SP524P 2xLED15S/840 PSD DCB GR	IP40
91853900	SP526P 2xLED20S/830 PSD DCB GR	IP40
91855300	SP526P 2xLED20S/840 PSD DCB GR	IP40

General Information (1/2)

Order Code	Full Product Name	Cap-Base	Glow-wire test	Lamp family code	Number of light sources
91840900	SP520P 2xLED15S/830 PSD-E SMTT WH	-	850/5	LED15S	2
91842300	SP520P 2xLED15S/840 PSD-E SMTT WH	-	850/5	LED15S	2
91844700	SP522P 2xLED20S/830 PSD-E SMTT WH	-	850/5	LED20S	2
91846100	SP522P 2xLED20S/840 PSD-E SMTT WH	-	850/5	LED20S	2
91841600	SP520P 2xLED15S/830 PSD-E SMTT GR	-	850/5	LED15S	2
91843000	SP520P 2xLED15S/840 PSD-E SMTT GR	-	850/5	LED15S	2
91845400	SP522P 2xLED20S/830 PSD-E SMTT GR	-	850/5	LED20S	2

Order Code	Full Product Name	Cap-Base	Glow-wire test	Lamp family code	Number of light sources
91847800	SP522P 2xLED20S/840 PSD-E SMTT GR	-	850/5	LED20S	2
91848500	SP524P 2xLED15S/830 PSD DCB WH	-	750/5	LED15S	2
91850800	SP524P 2xLED15S/840 PSD DCB WH	-	750/5	LED15S	1
91852200	SP526P 2xLED20S/830 PSD DCB WH	-	750/5	LED20S	2
91854600	SP526P 2xLED20S/840 PSD DCB WH	-	750/5	LED20S	2
91849200	SP524P 2xLED15S/830 PSD DCB GR	-	750/5	LED15S	2
91851500	SP524P 2xLED15S/840 PSD DCB GR	-	750/5	LED15S	2

LumiStone SP520P/SP522P/SP524P/SP526P

Order Code	Full Product Name	Cap-Base	Glow-wire test	Lamp family code	Number of light sources
91853900	SP526P 2xLED20S/830 PSD DCB GR	-	750/5	LED20S	2

Order Code	Full Product Name	Cap-Base	Glow-wire test	Lamp family code	Number of light sources
91855300	SP526P 2xLED20S/840 PSD DCB GR	-	750/5	LED20S	2

General Information (2/2)

Order Code	Full Product Name	Product Family Code
91840900	SP520P 2xLED15S/830 PSD-E SMTT WH	SP520P
91842300	SP520P 2xLED15S/840 PSD-E SMTT WH	SP520P
91844700	SP522P 2xLED20S/830 PSD-E SMTT WH	SP522P
91846100	SP522P 2xLED20S/840 PSD-E SMTT WH	SP522P
91841600	SP520P 2xLED15S/830 PSD-E SMTT GR	SP520P
91843000	SP520P 2xLED15S/840 PSD-E SMTT GR	SP520P
91845400	SP522P 2xLED20S/830 PSD-E SMTT GR	SP522P
91847800	SP522P 2xLED20S/840 PSD-E SMTT GR	SP522P

Order Code	Full Product Name	Product Family Code
91848500	SP524P 2xLED15S/830 PSD DCB WH	SP524P
91850800	SP524P 2xLED15S/840 PSD DCB WH	SP524P
91852200	SP526P 2xLED20S/830 PSD DCB WH	SP526P
91854600	SP526P 2xLED20S/840 PSD DCB WH	SP526P
91849200	SP524P 2xLED15S/830 PSD DCB GR	SP524P
91851500	SP524P 2xLED15S/840 PSD DCB GR	SP524P
91853900	SP526P 2xLED20S/830 PSD DCB GR	SP526P
91855300	SP526P 2xLED20S/840 PSD DCB GR	SP526P

Initial Performance (IEC Compliant) (1/2)

Order Code	Full Product Name	Initial chromaticity	Init. Corr. Colour Temperature	Initial LED luminaire efficacy	Initial luminous flux
91840900	SP520P 2xLED15S/830 PSD-E SMTT WH	(0.43, 0.40) SDCM <3	3000 K	128 lm/W	3000 lm
91842300	SP520P 2xLED15S/840 PSD-E SMTT WH	(0.38, 0.38) SDCM <3	4000 K	133 lm/W	3000 lm
91844700	SP522P 2xLED20S/830 PSD-E SMTT WH	(0.43, 0.40) SDCM <3	3000 K	136 lm/W	4000 lm
91846100	SP522P 2xLED20S/840 PSD-E SMTT WH	(0.38, 0.38) SDCM <3	4000 K	143 lm/W	4000 lm
91841600	SP520P 2xLED15S/830 PSD-E SMTT GR	(0.43, 0.40) SDCM <3	3000 K	128 lm/W	3000 lm
91843000	SP520P 2xLED15S/840 PSD-E SMTT GR	(0.38, 0.38) SDCM <3	4000 K	133 lm/W	3000 lm
91845400	SP522P 2xLED20S/830 PSD-E SMTT GR	(0.43, 0.40) SDCM <3	3000 K	136 lm/W	4000 lm
91847800	SP522P 2xLED20S/840 PSD-E SMTT GR	(0.38, 0.38) SDCM <3	4000 K	143 lm/W	4000 lm

Order Code	Full Product Name	Initial chromaticity	Init. Corr. Colour Temperature	Initial LED luminaire efficacy	Initial luminous flux
91848500	SP524P 2xLED15S/830 PSD DCB WH	(0.43, 0.40) SDCM <3	3000 K	128 lm/W	3000 lm
91850800	SP524P 2xLED15S/840 PSD DCB WH	(0.38, 0.38) SDCM <3	4000 K	133 lm/W	3000 lm
91852200	SP526P 2xLED20S/830 PSD DCB WH	(0.43, 0.40) SDCM <3	3000 K	136 lm/W	4000 lm
91854600	SP526P 2xLED20S/840 PSD DCB WH	(0.38, 0.38) SDCM <3.5	4000 K	143 lm/W	4000 lm
91849200	SP524P 2xLED15S/830 PSD DCB GR	(0.43, 0.40) SDCM <3	3000 K	128 lm/W	3000 lm
91851500	SP524P 2xLED15S/840 PSD DCB GR	(0.38, 0.38) SDCM <3	4000 K	133 lm/W	3000 lm
91853900	SP526P 2xLED20S/830 PSD DCB GR	(0.43, 0.40) SDCM <3	3000 K	136 lm/W	4000 lm
91855300	SP526P 2xLED20S/840 PSD DCB GR	(0.38, 0.38) SDCM <3	4000 K	143 lm/W	4000 lm

Initial Performance (IEC Compliant) (2/2)

Order Code	Full Product Name	Initial input power
91840900	SP520P 2xLED15S/830 PSD-E SMTT WH	23.5 W

Order Code	Full Product Name	Initial input power
91842300	SP520P 2xLED15S/840 PSD-E SMTT WH	22.5 W

LumiStone SP520P/SP522P/SP524P/SP526P

Order Code	Full Product Name	Initial input power
91844700	SP522P 2xLED20S/830 PSD-E SMTT WH	29.5 W
91846100	SP522P 2xLED20S/840 PSD-E SMTT WH	28 W
91841600	SP520P 2xLED15S/830 PSD-E SMTT GR	23.5 W
91843000	SP520P 2xLED15S/840 PSD-E SMTT GR	22.5 W
91845400	SP522P 2xLED20S/830 PSD-E SMTT GR	29.5 W
91847800	SP522P 2xLED20S/840 PSD-E SMTT GR	28 W
91848500	SP524P 2xLED15S/830 PSD DCB WH	23.5 W

Order Code	Full Product Name	Initial input power
91850800	SP524P 2xLED15S/840 PSD DCB WH	22.5 W
91852200	SP526P 2xLED20S/830 PSD DCB WH	29.5 W
91854600	SP526P 2xLED20S/840 PSD DCB WH	28 W
91849200	SP524P 2xLED15S/830 PSD DCB GR	23.5 W
91851500	SP524P 2xLED15S/840 PSD DCB GR	22.5 W
91853900	SP526P 2xLED20S/830 PSD DCB GR	29.5 W
91855300	SP526P 2xLED20S/840 PSD DCB GR	28 W

Mechanical and Housing

Order Code	Full Product Name	Colour
91840900	SP520P 2xLED15S/830 PSD-E SMTT WH	White
91842300	SP520P 2xLED15S/840 PSD-E SMTT WH	White
91844700	SP522P 2xLED20S/830 PSD-E SMTT WH	White
91846100	SP522P 2xLED20S/840 PSD-E SMTT WH	White
91841600	SP520P 2xLED15S/830 PSD-E SMTT GR	Gray
91843000	SP520P 2xLED15S/840 PSD-E SMTT GR	Gray
91845400	SP522P 2xLED20S/830 PSD-E SMTT GR	Gray
91847800	SP522P 2xLED20S/840 PSD-E SMTT GR	Gray

Order Code	Full Product Name	Colour
91848500	SP524P 2xLED15S/830 PSD DCB WH	White
91850800	SP524P 2xLED15S/840 PSD DCB WH	White
91852200	SP526P 2xLED20S/830 PSD DCB WH	White
91854600	SP526P 2xLED20S/840 PSD DCB WH	White
91849200	SP524P 2xLED15S/830 PSD DCB GR	Gray
91851500	SP524P 2xLED15S/840 PSD DCB GR	Gray
91853900	SP526P 2xLED20S/830 PSD DCB GR	Gray
91855300	SP526P 2xLED20S/840 PSD DCB GR	Gray

