



LumiStone – inspiring performance

LumiStone SP520P/SP522P/SP524P/SP526P

Customers within the office, retail and hospitality sectors want to create spaces with a pleasant and inviting atmosphere. Luminaires with an appealing design and top-notch performance play a pivotal role in achieving this. LumiStone is a LED luminaire consisting of two smaller ellipses rather than the traditional single voluminous piece. The ellipses have soft curvatures and resemble smooth stones found in nature. The flexible light effects created with direct and indirect light make LumiStone the perfect choice for inspiring lighting designs. Thanks to its cutting-edge LED technology, LumiStone is also highly energy-efficient, delivering immediate savings on operational costs. A range of innovative mounting options make LumiStone extremely versatile in application.

Benefits

- Creates a truly inspiring environment with appealing design and indirect lighting
- Over 50% energy savings compared to a functional luminaire, and even more compared to decorative solutions
- Many variations thanks to innovative mounting options

Features

- Choice of direct and direct/indirect lighting
- Office norm-compliant
- Versions available for concrete and recessed ceilings

Application

- Offices – general and task lighting
- Retail
- Hospitality

Specifications

LumiStone SP520P/SP522P/SP524P/SP526P

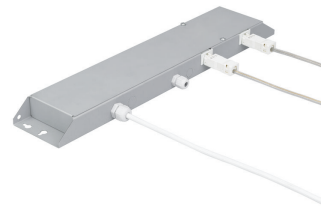
Type	SP520P (dual module, clips to an exposed T-bar ceiling, direct lighting)
	SP522P (dual module, clips to an exposed T-bar ceiling, direct and indirect lighting)
	SP524P (dual module, decorative ceiling bar, direct lighting)
	SP526P (dual module, decorative ceiling bar, direct and indirect lighting)
Light source	Philips LED module PP
Power (+/-10%)	SP520P and SP524P: 29 W, 31 W
	SP522P and SP526P: 38 W, 40 W
Luminous flux	SP520P and SP524P: 3000 lm in total, 1500 lm for each ellipse
	SP522P and SP526P: 4000 lm in total, 2000 lm for each ellipse
Correlated Colour Temperature	3000 or 4000 K
Colour Rendering Index	≥ 80
Median useful life L80B50	50,000 hours
Median useful life L90B50	25,000 hours
Driver failure rate	1% per 5000 hours
Average ambient temperature	+25 °C

Operating temperature range	+10 to +40°C
Driver	SP520P and SP522P: separate
	SP524P and SP526P: built in
Mains voltage	220-240 V / 50-60 Hz
Dimming	Dimmable
Controls system input	DALI
Material	Housing and optics: poly-carbonate
Colour	White (WH) and light grey (GR)
Optic	Poly-carbonate LED cup
Connection	Push-in connector with pull relief
Installation	SP520P and SP522P: connection with clips to an exposed T-bar ceiling with two triangular steel-wire suspensions (SMTT), both with metal-like power cord, 150 cm, driver in separate driver box
	SP524P and SP526P: decorative ceiling bar with integrated driver, screw mounting to ceiling
	Through-wiring possible: no

Versions



Product details



Product details



LumiStone SP520P/SP522P/SP524P/SP526P

Application Conditions

Ambient temperature range	+10 to +40 °C
Maximum dim level	1%
Suitable for random switching	Yes (relates to presence/movement detection and daylight harvesting)

Approval and Application

Mech. impact protection code	IK02
Ingress protection code	IP40

Controls and Dimming

Dimmable	Yes
----------	-----

Operating and Electrical

Input Voltage	220-240 V
---------------	-----------

General Information

Beam angle of light source	- °
CE mark	CE mark
Protection class IEC	Safety class I (I)
Driver included	Yes
ENEC mark	ENEC plus mark
Flammability mark	F
Glow-wire test	750/5
Light source replaceable	No
Number of gear units	1 unit
Optic type	No
UL mark	No

Initial Performance (IEC Compliant)

Init. Colour Rendering Index	≥80
Luminous flux tolerance	+/-10%

Mechanical and Housing

Colour	White
--------	-------

General Information

Order Code	Full Product Name	Lamp family code	Number of light sources	Product Family Code
910504080403	SP524P 2xLED15S/830 PSD DCB WH	LED15S	2	SP524P
910504080603	SP524P 2xLED15S/840 PSD DCB WH	LED15S	1	SP524P
910504080803	SP526P 2xLED20S/830 PSD DCB WH	LED20S	2	SP526P
910504081003	SP526P 2xLED20S/840 PSD DCB WH	LED20S	2	SP526P

Initial Performance (IEC Compliant) (1/2)

Order Code	Full Product Name	Initial chromaticity	Init. Corr. Colour Temperature	Initial LED luminaire efficacy	Initial luminous flux
910504080403	SP524P 2xLED15S/830 PSD DCB WH	(0.43, 0.40) SDCM <3	3000 K	128 lm/W	3000 lm
910504080603	SP524P 2xLED15S/840 PSD DCB WH	(0.38, 0.38) SDCM <3	4000 K	133 lm/W	3000 lm
Order Code	Full Product Name	Initial chromaticity	Init. Corr. Colour Temperature	Initial LED luminaire efficacy	Initial luminous flux
910504080803	SP526P 2xLED20S/830 PSD DCB WH	(0.43, 0.40) SDCM <3	3000 K	136 lm/W	4000 lm
910504081003	SP526P 2xLED20S/840 PSD DCB WH	(0.38, 0.38) SDCM <3.5	4000 K	143 lm/W	4000 lm

Initial Performance (IEC Compliant) (2/2)

LumiStone SP520P/SP522P/SP524P/SP526P

Order Code	Full Product Name	Initial input power
910504080403	SP524P 2xLED15S/830 PSD DCB WH	23.5 W
910504080603	SP524P 2xLED15S/840 PSD DCB WH	22.5 W

Order Code	Full Product Name	Initial input power
910504080803	SP526P 2xLED20S/830 PSD DCB WH	29.5 W
910504081003	SP526P 2xLED20S/840 PSD DCB WH	28 W

