

LumiStone – inspiring performance

LumiStone SP520P/SP522P/SP524P/SP526P

Customers within the office, retail and hospitality sectors want to create spaces with a pleasant and inviting atmosphere. Luminaires with an appealing design and top-notch performance play a pivotal role in achieving this. LumiStone is a LED luminaire consisting of two smaller ellipses rather than the traditional single voluminous piece. The ellipses have soft curvatures and resemble smooth stones found in nature. The flexible light effects created with direct and indirect light make LumiStone the perfect choice for inspiring lighting designs. Thanks to its cutting-edge LED technology, LumiStone is also highly energy-efficient, delivering immediate savings on operational costs. A range of innovative mounting options make LumiStone extremely versatile in application.

Benefits

- Creates a truly inspiring environment with appealing design and indirect lighting
- Over 50% energy savings compared to a functional luminaire, and even more compared to decorative solutions
- Many variations thanks to innovative mounting options

Features

- Choice of direct and direct/indirect lighting
- Office norm-compliant
- Versions available for concrete and recessed ceilings

Application

- Offices – general and task lighting
- Retail
- Hospitality

Specifications

LumiStone SP520P/SP522P/SP524P/SP526P

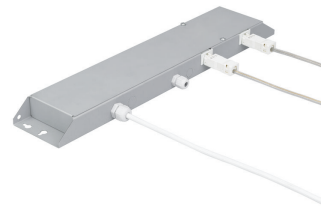
Type	SP520P (dual module, clips to an exposed T-bar ceiling, direct lighting)
	SP522P (dual module, clips to an exposed T-bar ceiling, direct and indirect lighting)
	SP524P (dual module, decorative ceiling bar, direct lighting)
	SP526P (dual module, decorative ceiling bar, direct and indirect lighting)
Light source	Philips LED module PP
Power (+/-10%)	SP520P and SP524P: 29 W, 31 W
	SP522P and SP526P: 38 W, 40 W
Luminous flux	SP520P and SP524P: 3000 lm in total, 1500 lm for each ellipse
	SP522P and SP526P: 4000 lm in total, 2000 lm for each ellipse
Correlated Colour Temperature	3000 or 4000 K
Colour Rendering Index	≥ 80
Median useful life L80B50	50,000 hours
Median useful life L90B50	25,000 hours
Driver failure rate	1% per 5000 hours
Average ambient temperature	+25 °C

Operating temperature range	+10 to +40°C
Driver	SP520P and SP522P: separate
	SP524P and SP526P: built in
Mains voltage	220-240 V / 50-60 Hz
Dimming	Dimmable
Controls system input	DALI
Material	Housing and optics: poly-carbonate
Colour	White (WH) and light grey (GR)
Optic	Poly-carbonate LED cup
Connection	Push-in connector with pull relief
Installation	SP520P and SP522P: connection with clips to an exposed T-bar ceiling with two triangular steel-wire suspensions (SMTT), both with metal-like power cord, 150 cm, driver in separate driver box
	SP524P and SP526P: decorative ceiling bar with integrated driver, screw mounting to ceiling
	Through-wiring possible: no

Versions



Product details



LumiStone SP520P/SP522P/SP524P/SP526P

Product details

